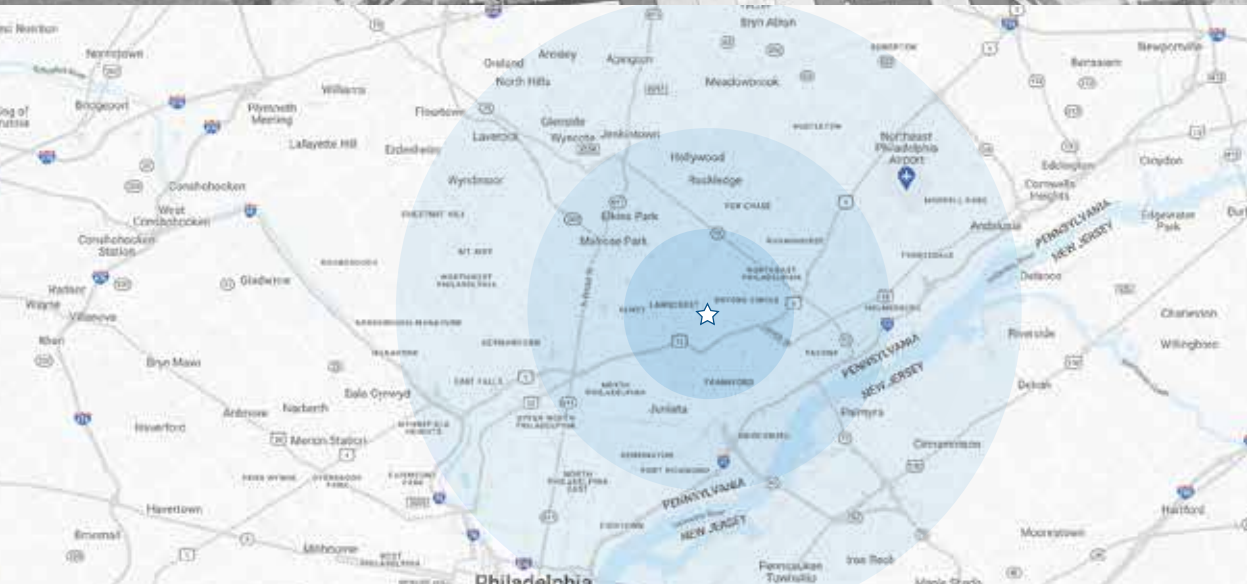
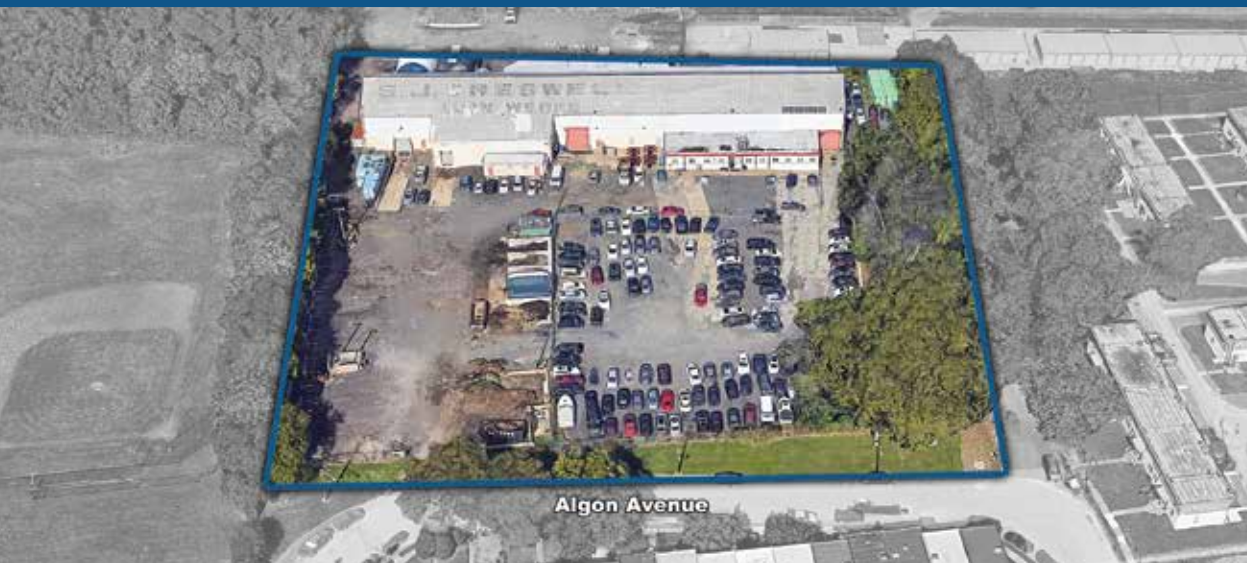


32,000 SF WAREHOUSE ON 2.94 ACRES FOR LEASE

1000 E. COMLY STREET

PHILADELPHIA, PA 19149



PROPERTY HIGHLIGHTS

32,000 SF warehouse/flex building situated on 2.94 acres

Includes 2,000 SF office space, bathroom and break room

Ideal for warehouse storage, outside storage, cross-docking, trucking or distribution facility

Zoned L3 - Limited industrial district

Two (2) tailgate - expandable docks, three (3) drive-in docks and two (2) cranes (6 to 10 ton pendant controlled)

Electric power: 500 volts, 3-phase, 2 Westinghouse Teaser 100N, 200 kva

Landlord would consider short term rental of the storage space on a month to month basis

2023 DEMOGRAPHICS	1 MILE	2 MILES	3 MILES
EST. POPULATION	56,695	198,054	382,664
EST. HOUSEHOLDS	19,625	69,913	140,186
EST. AVE. HH INCOME	\$68,463	\$5,881	\$67,873



2100 Byberry Road, Suite 202
Philadelphia, PA 19116
215-464-4251 | wtarealestate.com



215-416-2497



jthackray@comcast.net

JIM THACKRAY

32,000 SF WAREHOUSE ON 2.94 ACRES FOR LEASE

1000 E. COMLY STREET

PHILADELPHIA, PA 19149

2.94 ACRE PARCEL

32,000 SF Warehouse/flex space
with 2,000 SF office

Two (2) tailgate - expandable
docks, three (3) drive-in docks and
two (2) cranes overhead



2100 Byberry Road, Suite 202
Philadelphia, PA 19116
215-464-4251 | wtarealestate.com



215-416-2497



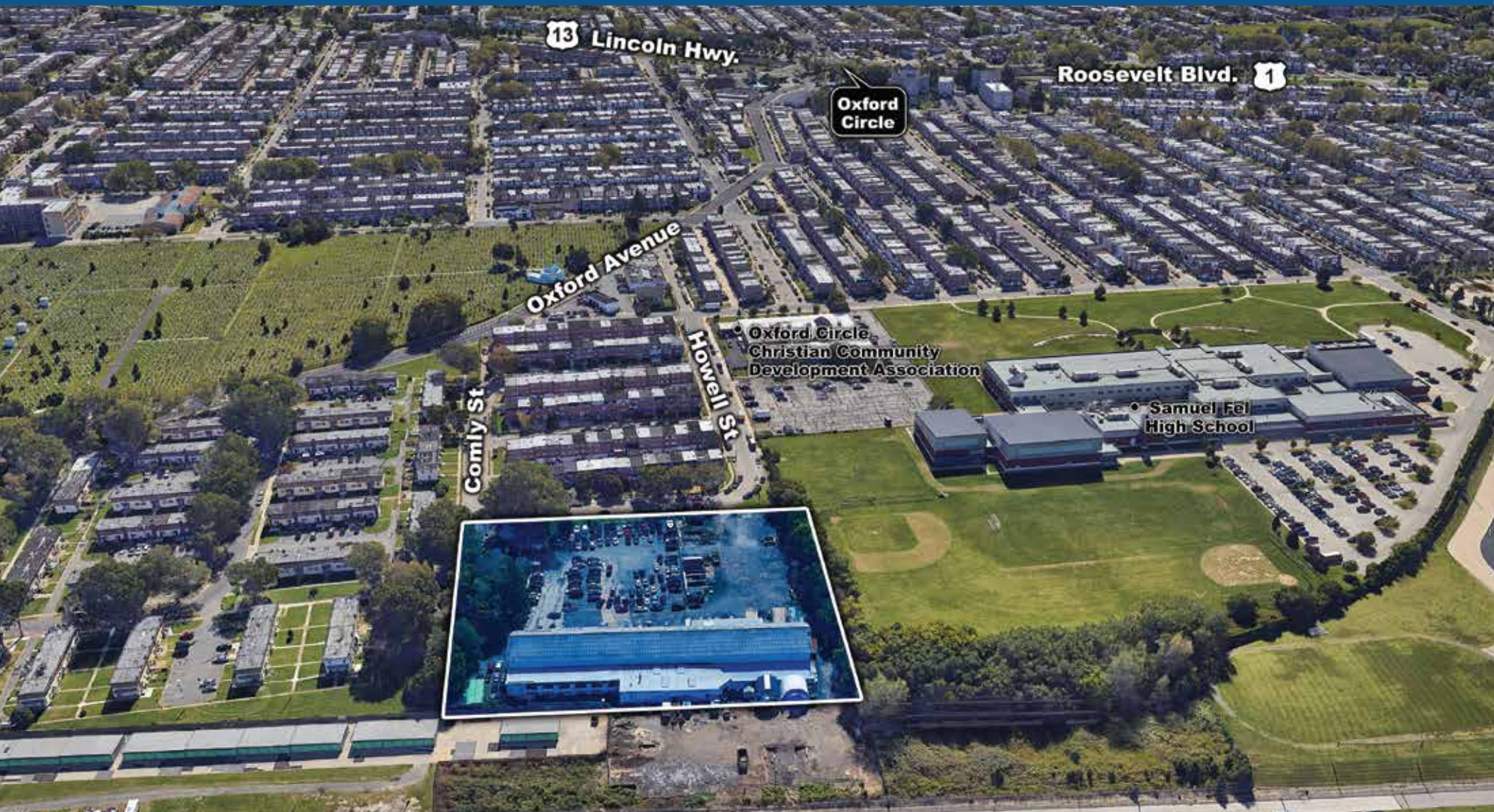
jthackray@comcast.net

JIM THACKRAY

32,000 SF WAREHOUSE ON 2.94 ACRES FOR LEASE

1000 E. COMLY STREET

PHILADELPHIA, PA 19149



2100 Byberry Road, Suite 202
Philadelphia, PA 19116
215-464-4251 | wtarealestate.com



215-416-2497



jthackray@comcast.net

JIM THACKRAY