



FOR SUBLEASE

Asking Rate:

\$28.00 PSF NET

Contact us:

Wade Smith, SIOR

Brokerage | Arkansas

+1 (214) 924 1605

wade.smith@ar.colliers.com

John Rowland

Brokerage | Arkansas

+1 (501) 804 2514

john.rowland@ar.colliers.com



3503 S 55th Street, Suite 200
Rogers, AR 72758
+1 479 636 9000
colliers.com/arkansas

607 SW F Street Bentonville, AR

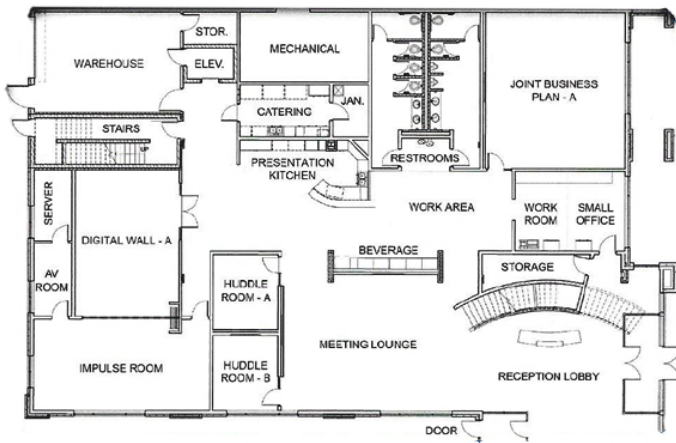
Property Features

- +/- 18,562 square feet of collaboration space
- Located in Downtown Bentonville
- Sublease through March 31, 2030
- Multiple conference rooms, open areas and full kitchen
- Near the Walmart Home Office campus and within walking distance to the Bentonville Square

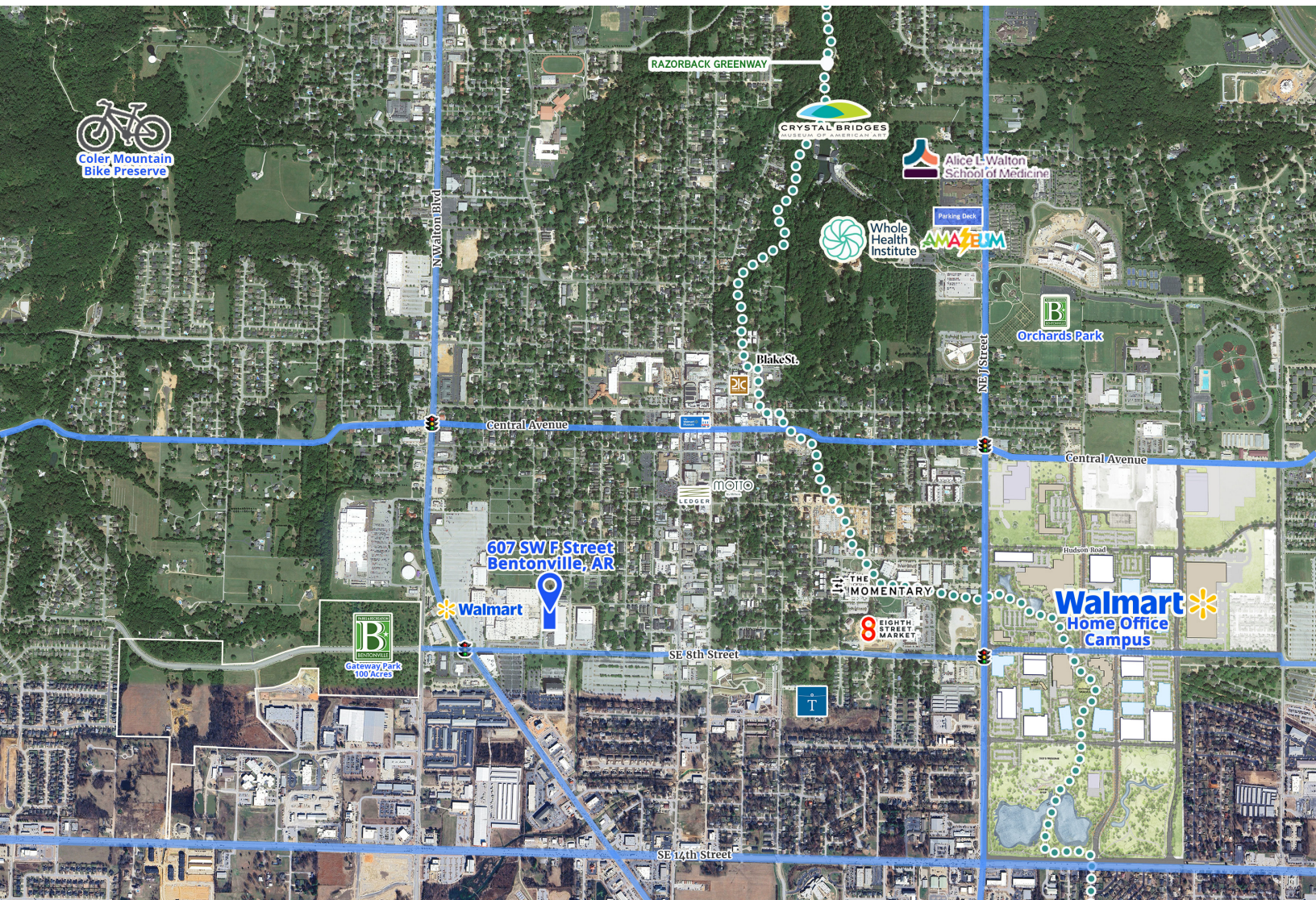
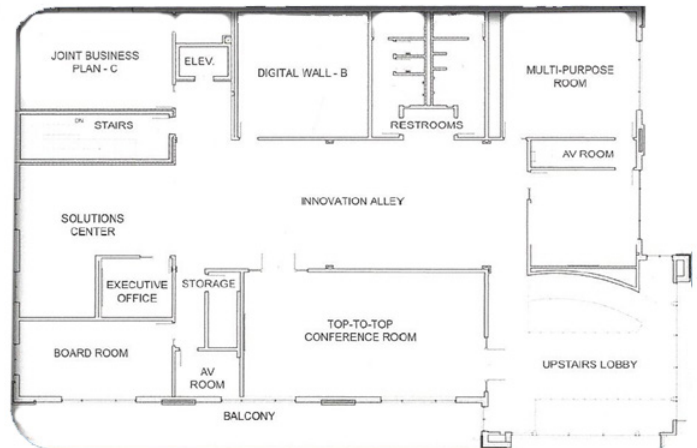
Beautiful second-generation collective workspace available for sublease in the heart of Bentonville, Arkansas. The property consists of a two-story Class B building with high-end finishes, large conference rooms, reception area, private parking lot and full kitchen. The building has a layout for a team environment with collective workspace perfect for group settings, conferences, idea lab, creative studio and many more uses. Walk to the Bentonville Square, restaurants, shopping and the Crystal Bridges Museum within minutes.

607 SW F STREET

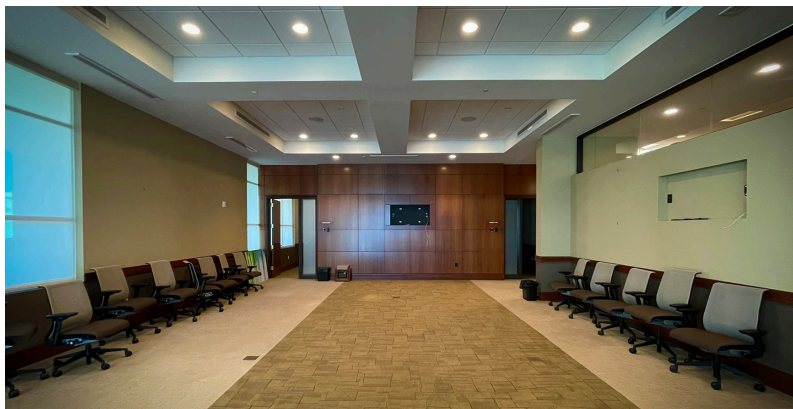
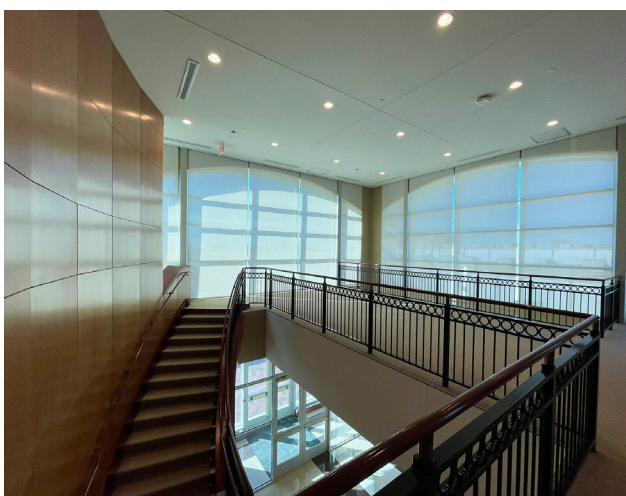
First Floor



Second Floor



INTERIOR PHOTOS



Contact us:

Wade Smith, SIOR

Brokerage | Arkansas

C: +1 (214) 924 1605

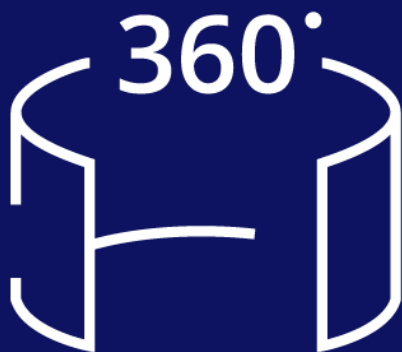
wade.smith@ar.colliers.com

John Rowland

Brokerage | Arkansas

C: +1 (501) 804 2514

john.rowland@ar.colliers.com



[View Virtual Tour Here!](#)



3503 S 55th Street, Suite 200

Rogers, AR 72758

+1 (479) 636 9000

colliers.com/arkansas

