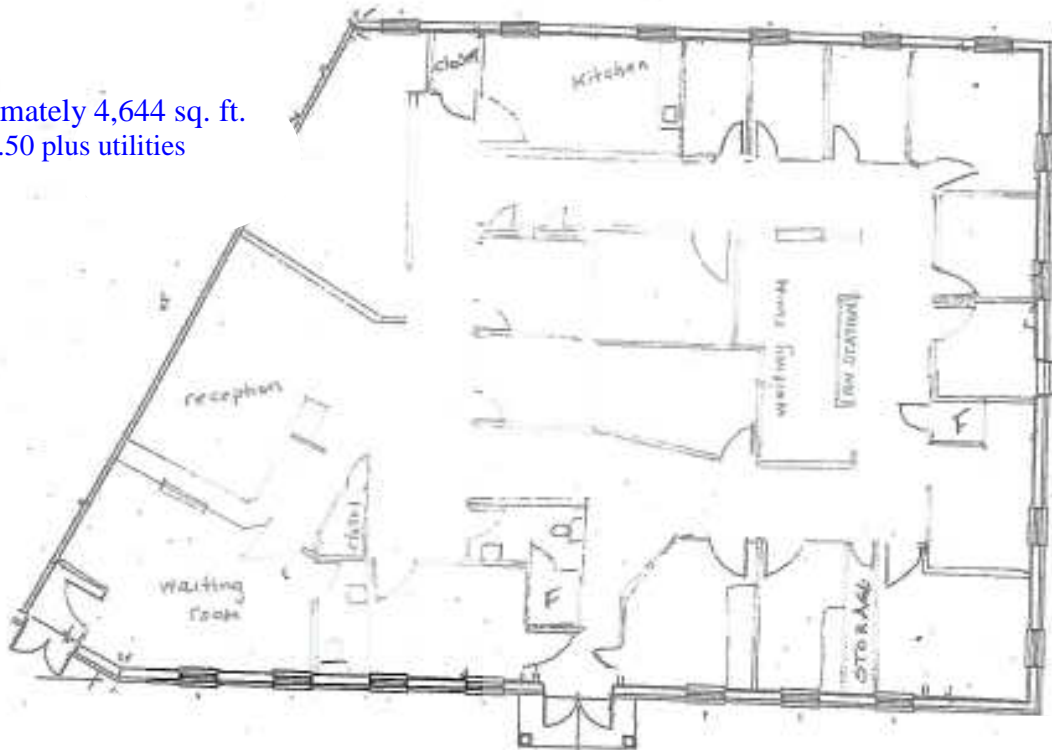
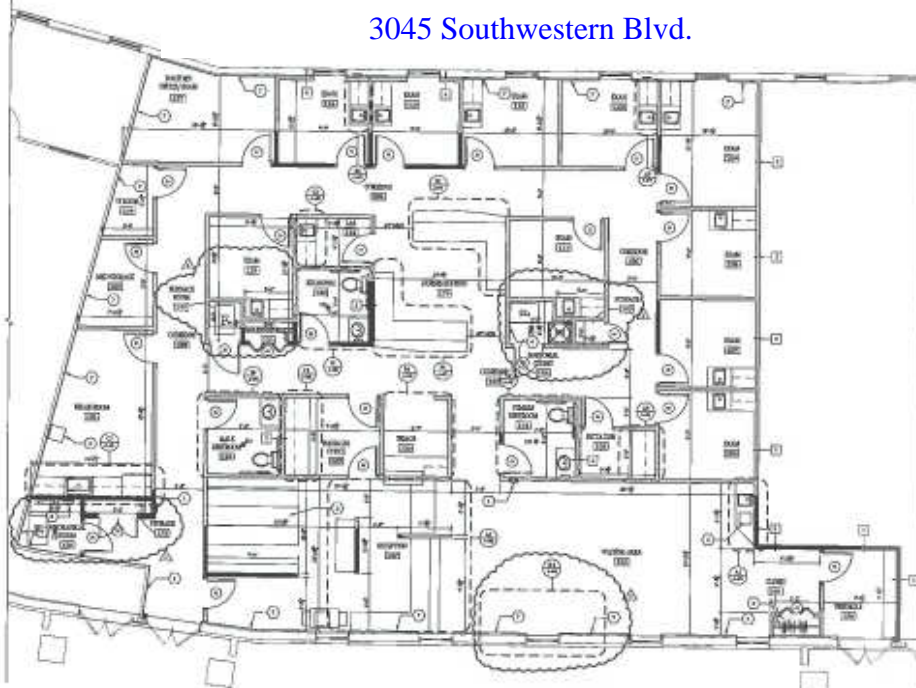


3055 Southwestern Blvd.

Approximately 4,644 sq. ft.
\$19.50 plus utilities



3045 Southwestern Blvd.



NOTICE
The undersigned hereby certifies that the above is a true and correct copy of the original as filed with the County Clerk of the County of St. Louis, Missouri, on this 11th day of February, 2012.

Primary Care Doctor's Office

Tuberculosis Professional Park
1000 Southwestern Blvd.
St. Louis, MO 63104

DATE
11-29-02

BY
[Signature]

DEED RECORD
[Signature]

TITLE
Floor Plan

SILVESTRI ARCHITECTS-PC
1000 Southwestern Blvd.
St. Louis, MO 63104

DATE
11-29-02

FILE
02-01-12

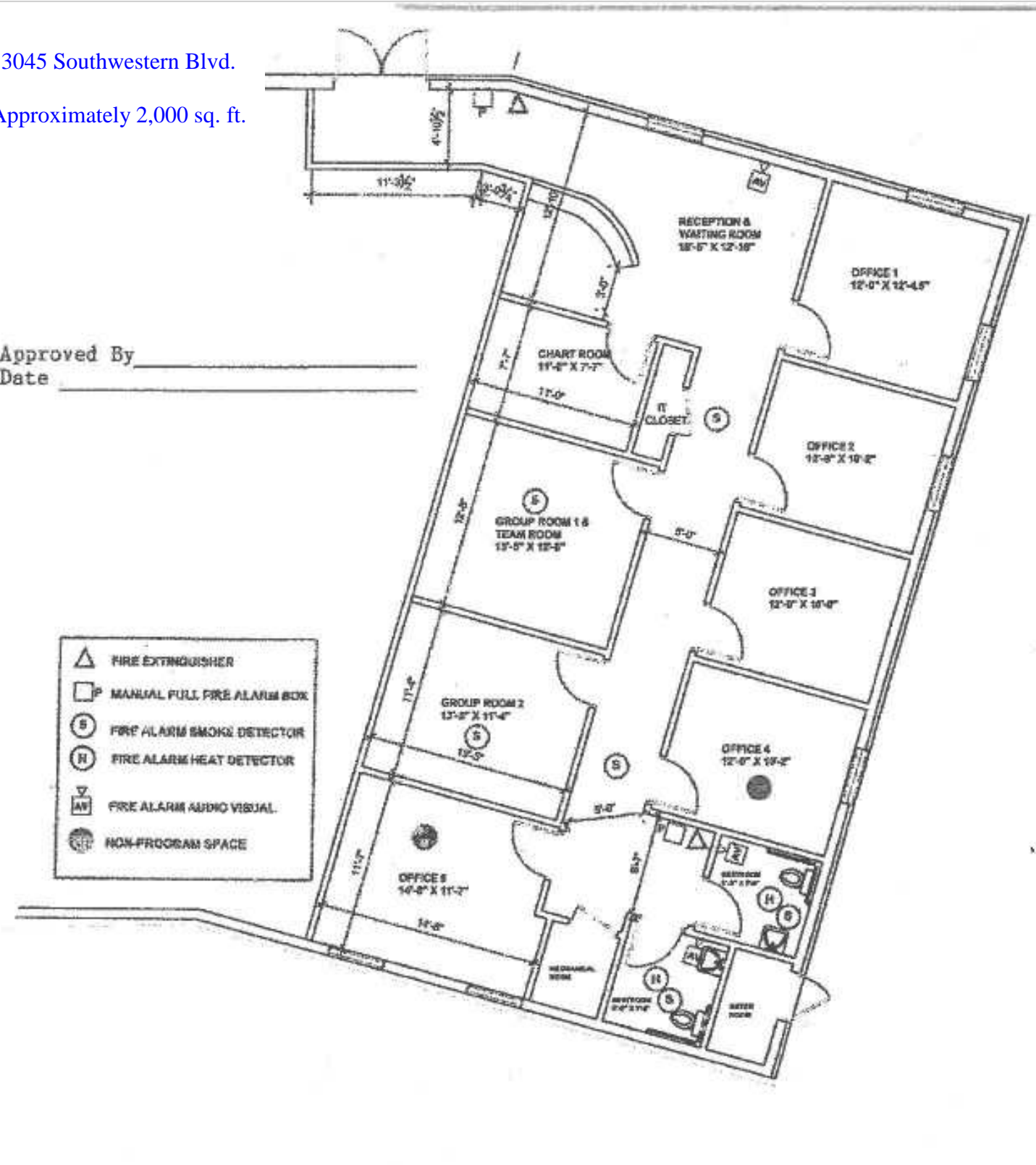
REVISION
A-101

Approximately 4,300 sq. ft.
\$19.50 plus utilities

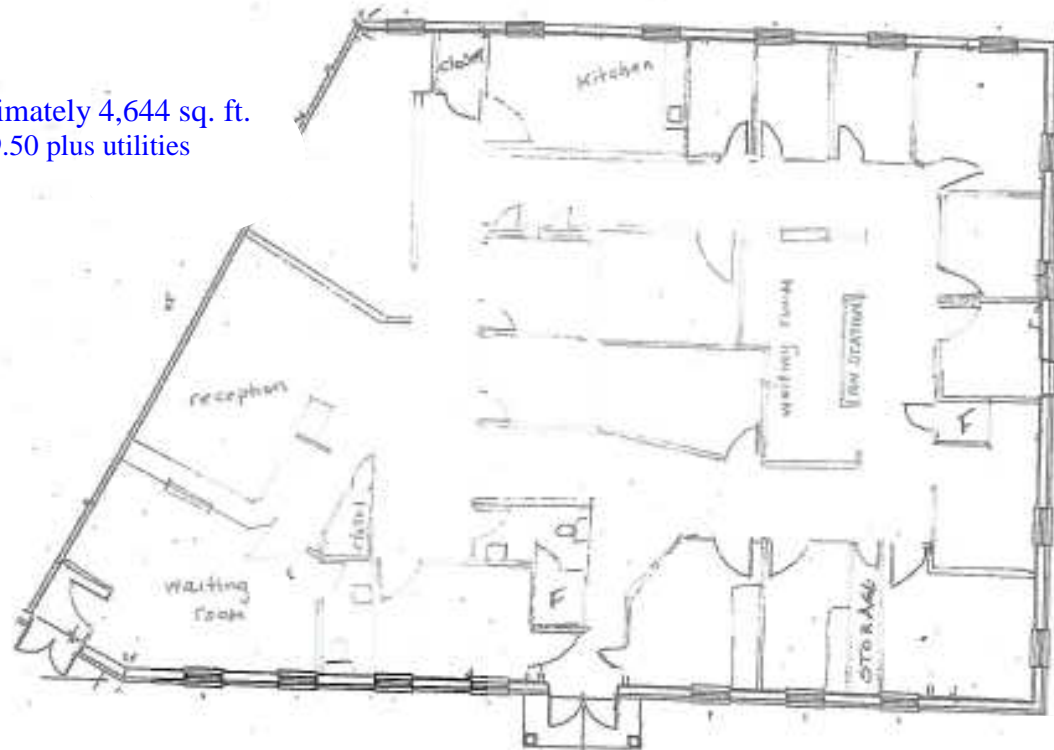
3045 Southwestern Blvd.

Approximately 2,000 sq. ft.

Approved By _____
Date _____



Approximately 4,644 sq. ft.
\$19.50 plus utilities









SOUTHWESTERN MUD.

[illegible]

11129-02	02-01-12
----------	----------

Approximately 4,300 sq. ft.
\$19.50 plus utilities

Approximately 2,000 sq. ft.

 FIRE EXTINGUISHER
 MANUAL PULL FIRE ALARM BOX
 FIRE ALARM SMOKE DETECTOR
 FIRE ALARM HEAT DETECTOR
 FIRE ALARM AUDIO VISUAL
 NON-PROGRAM SPACE

