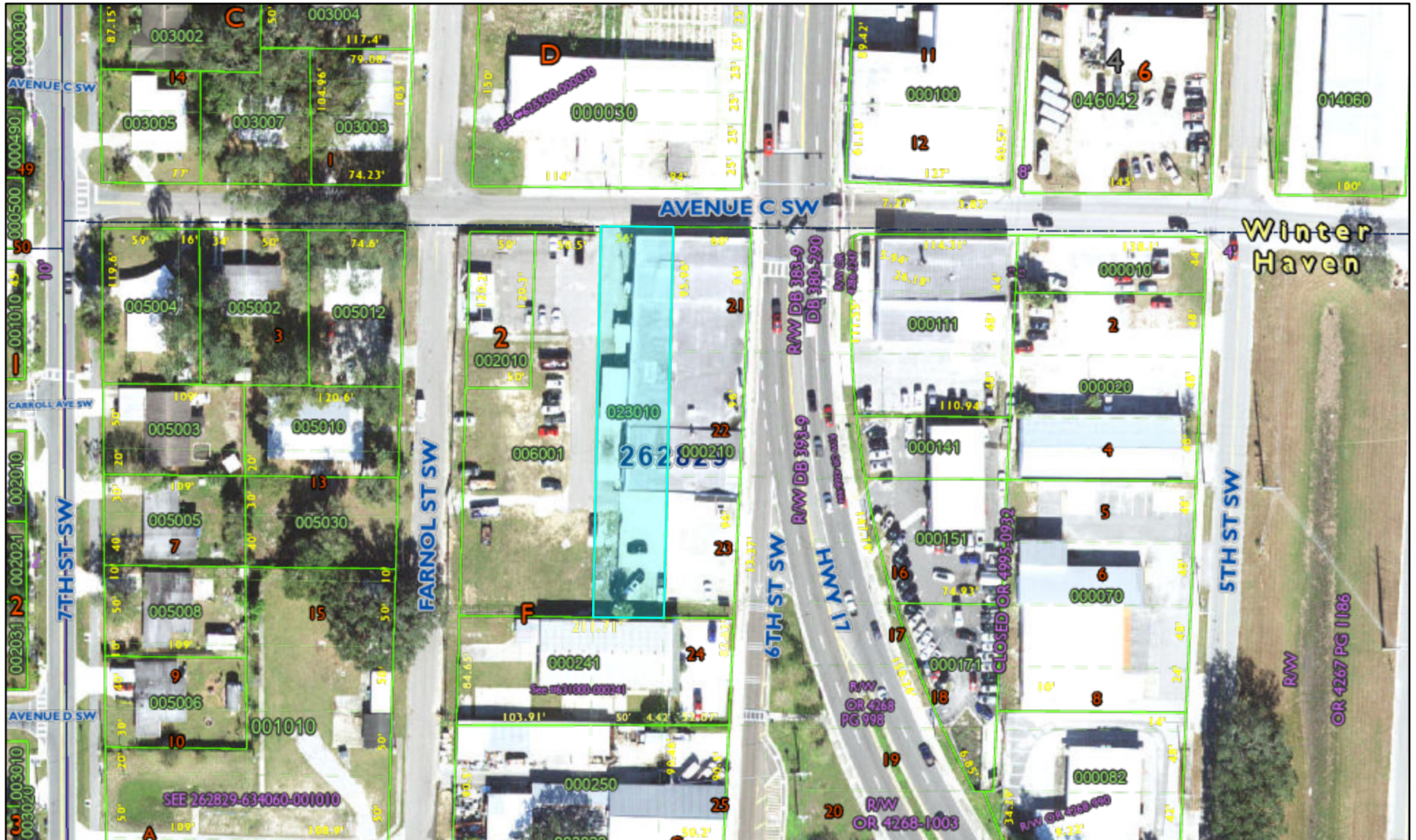
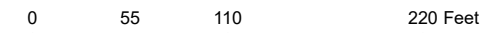


Arrington Body Shop - 2



- | | | | |
|----------------------|-------------------------|----------------------|---------------|
| Roads | Tiers | Arrows | Gov't Lots |
| Waterbodies | Dimensions_ParcelFabric | Parcels | HALFFOOT2023 |
| Municipal Boundaries | Dimensions_Carto_Dist | Surrounding Counties | RGB |
| Lots | Dimensions_LabelText | PLSS Townships | Red: Band_1 |
| Lot and Block Text | Misc Text | PLSS Sections | Green: Band_2 |
| Blocks | Railroads | PLSS Boundaries | Blue: Band_3 |



All maps are worksheets used for illustrative purposes only, they are not surveys. The Polk County Property Appraiser assumes no responsibility for errors in the information and does not guarantee the data is free from error or inaccuracy. The information is provided "as is".



Marsha M. Faux, CFA, ASA
 Property Appraiser
 Polk County, Florida
 October 16, 2024

