



Johnson County Drive-Thru Restaurant

12210 W. 135th Street, Overland Park, Kansas



SALE PRICE: \$1,200,000 | LEASE RATE: \$26/SF NNN

DEMOGRAPHICS

	1 mile	3 miles	5 miles
Estimated Population	13,051	100,731	238,643
Avg. Household Income	\$154,028	\$133,359	\$125,249

- Drive-thru restaurant property
- 2,965 SF building on 0.92 acres
- Patio seating
- Traffic counts over 38,000 cars per day



CLICK HERE TO VIEW MORE
LISTING INFORMATION

For More Information Contact:

MARSHAL BLOUNT | 816.806.9445 | mblount@blockandco.com

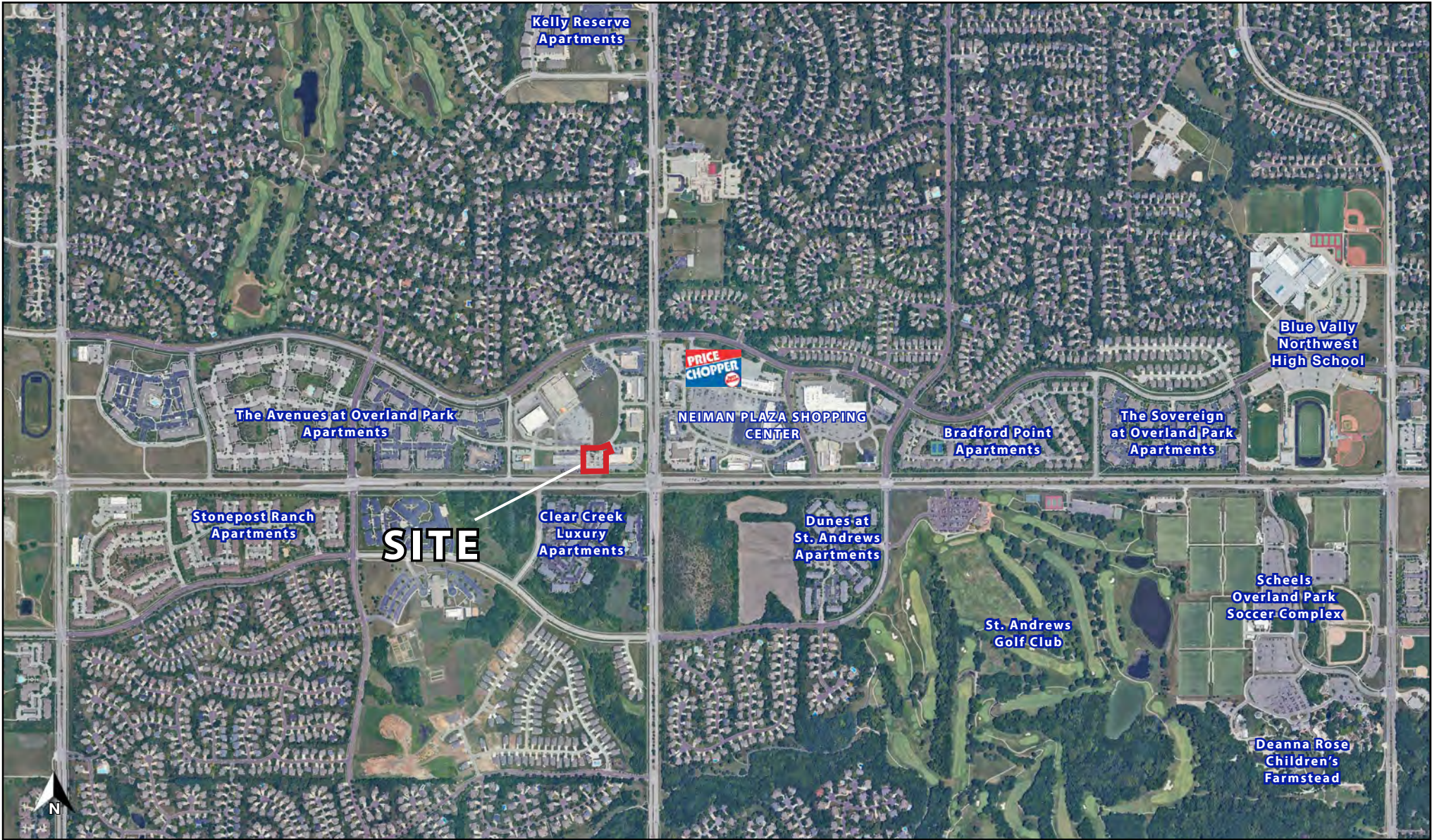
Exclusive Agent



Johnson County Drive-Thru Restaurant

12210 W. 135th Street, Overland Park, Kansas

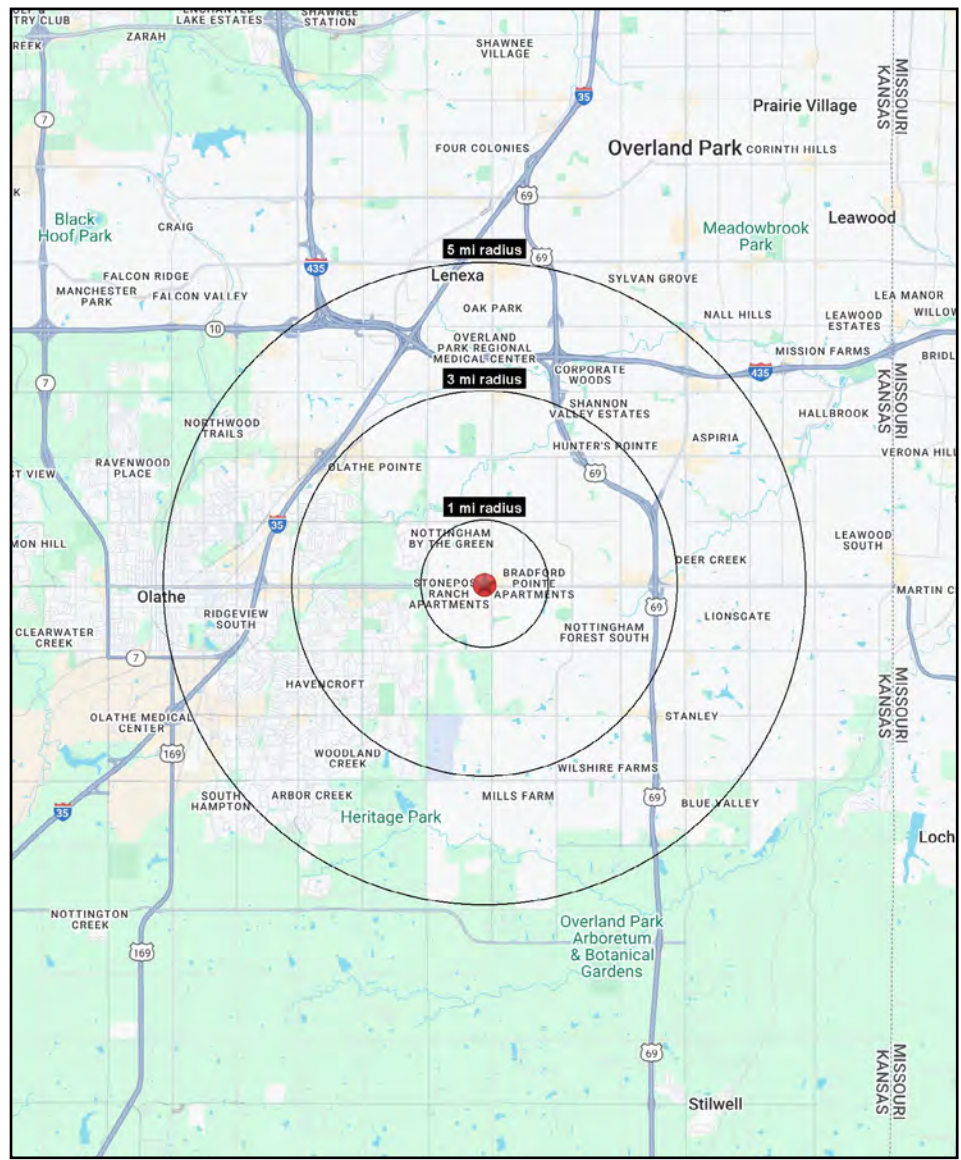
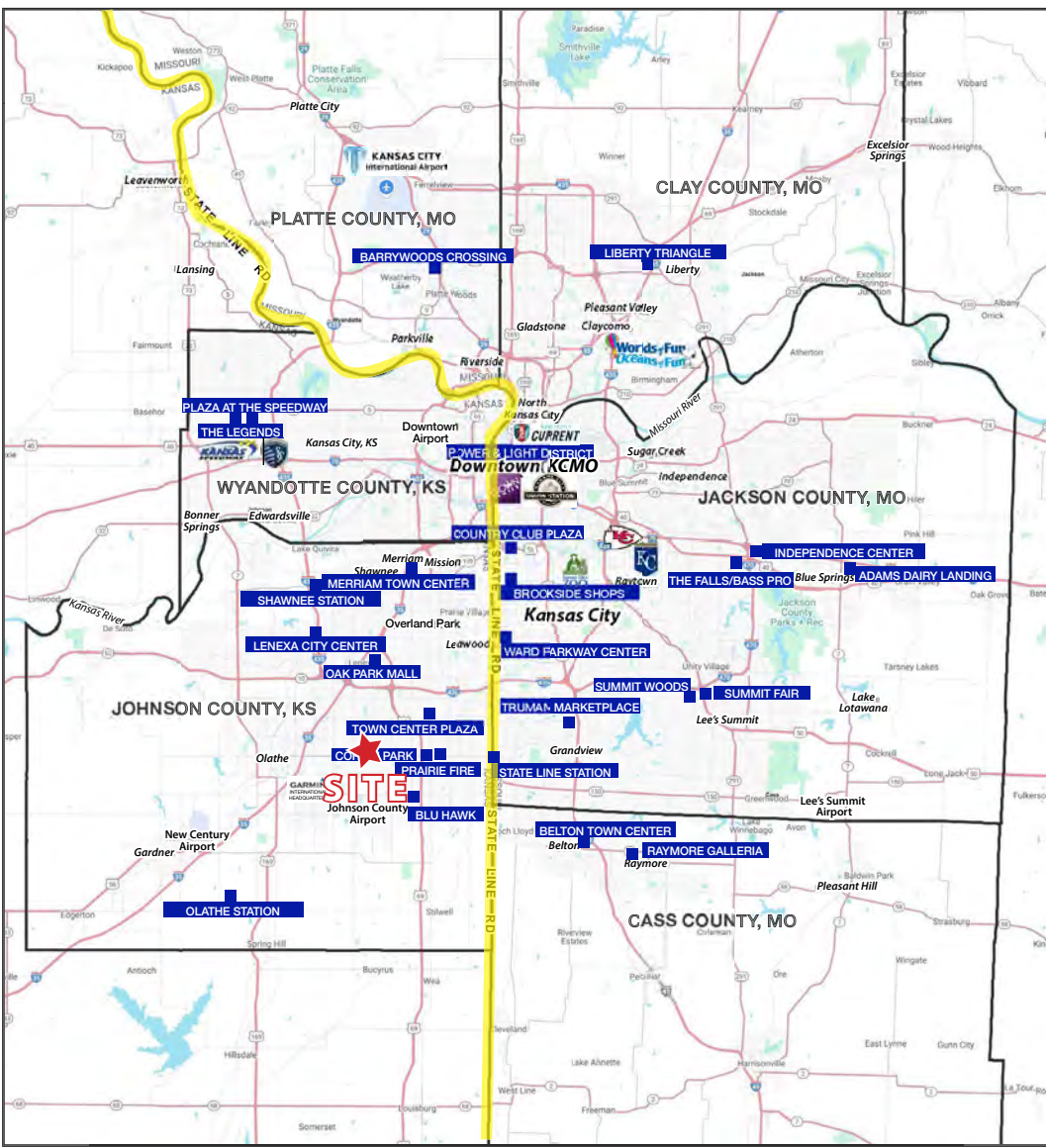
AERIAL





Johnson County Drive-Thru Restaurant

12210 W. 135th Street, Overland Park, Kansas





Johnson County Drive-Thru Restaurant

12210 W. 135th Street, Overland Park, Kansas

12210 W. 135th Street Overland Park, KS 66221	1 mi radius	3 mi radius	5 mi radius
Population			
2025 Estimated Population	13,198	101,792	243,291
2030 Projected Population	13,358	102,699	246,415
2020 Census Population	14,728	101,014	236,126
2010 Census Population	10,687	90,260	210,982
Projected Annual Growth 2025 to 2030	0.2%	0.2%	0.3%
Historical Annual Growth 2010 to 2025	1.6%	0.9%	1.0%
2025 Median Age	38.2	38.3	38.1
Households			
2025 Estimated Households	5,249	40,885	96,573
2030 Projected Households	5,402	42,213	99,960
2020 Census Households	5,017	38,247	90,538
2010 Census Households	3,587	33,621	80,304
Projected Annual Growth 2025 to 2030	0.6%	0.6%	0.7%
Historical Annual Growth 2010 to 2025	3.1%	1.4%	1.4%
Race and Ethnicity			
2025 Estimated White	79.2%	77.7%	76.6%
2025 Estimated Black or African American	4.3%	5.4%	5.8%
2025 Estimated Asian or Pacific Islander	10.2%	9.3%	8.5%
2025 Estimated American Indian or Native Alaskan	0.2%	0.2%	0.3%
2025 Estimated Other Races	6.1%	7.3%	8.8%
2025 Estimated Hispanic	6.0%	7.3%	9.0%
Income			
2025 Estimated Average Household Income	\$177,452	\$152,395	\$149,102
2025 Estimated Median Household Income	\$124,460	\$122,286	\$118,198
2025 Estimated Per Capita Income	\$70,601	\$61,251	\$59,279
Education (Age 25+)			
2025 Estimated Elementary (Grade Level 0 to 8)	1.0%	1.2%	1.4%
2025 Estimated Some High School (Grade Level 9 to 11)	1.0%	1.2%	2.0%
2025 Estimated High School Graduate	6.9%	10.2%	12.7%
2025 Estimated Some College	13.0%	16.5%	17.3%
2025 Estimated Associates Degree Only	6.0%	6.4%	7.0%
2025 Estimated Bachelors Degree Only	43.7%	39.0%	35.8%
2025 Estimated Graduate Degree	28.5%	25.5%	23.8%
Business			
2025 Estimated Total Businesses	236	2,529	10,375
2025 Estimated Total Employees	1,217	24,506	162,703
2025 Estimated Employee Population per Business	5.2	9.7	15.7
2025 Estimated Residential Population per Business	55.9	40.3	23.4

©2025, Sites USA, Chandler, Arizona, 480-491-1112 Demographic Source: Applied Geographic Solutions 5/2025, TIGER Geography - RS1