

37 NEWBURY STREET

BOSTON, MA

6TH FLOOR | 2,065 SF

NEW LOBBY & SPEC SUITE
COMING SOON



AVAILABILITY

6TH FLOOR | 2,065 SF



LEASE RATE

Negotiable



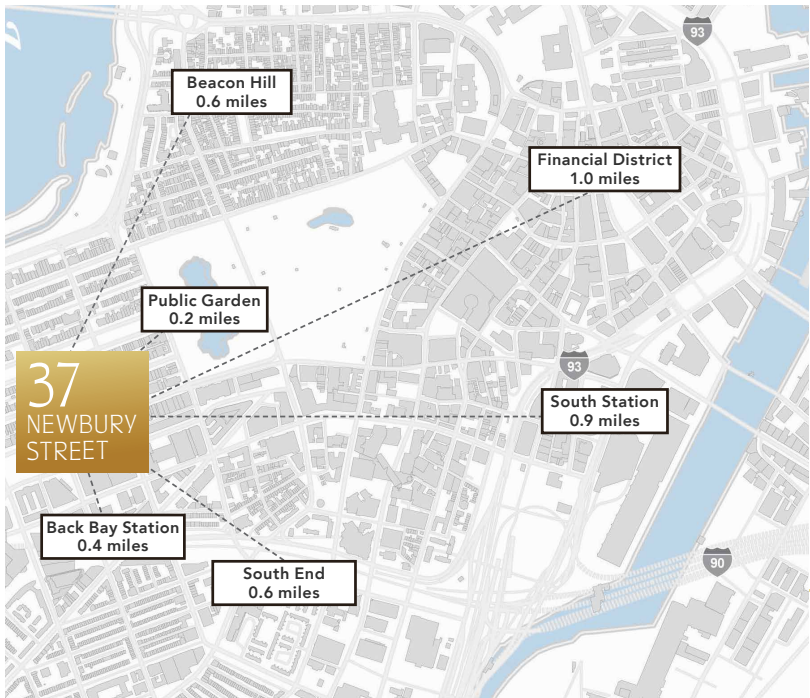
LEASE TERM

6th Floor



Boston Realty Advisors

TRANSIT-ORIENTED & CENTRALLY LOCATED

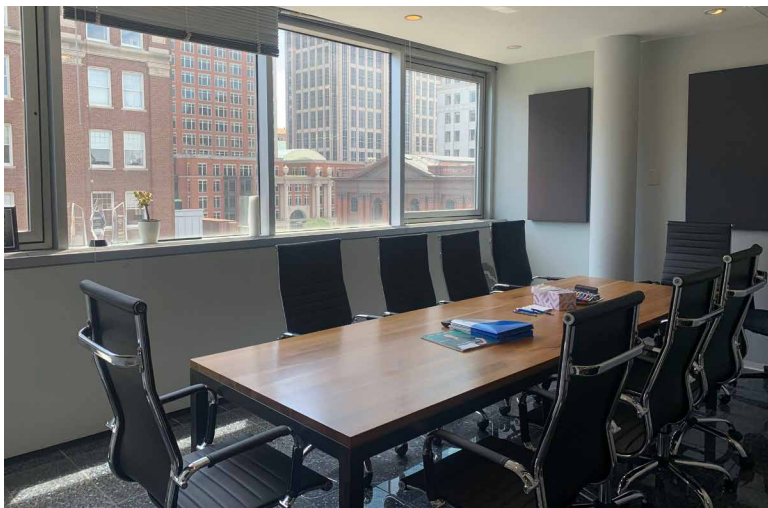
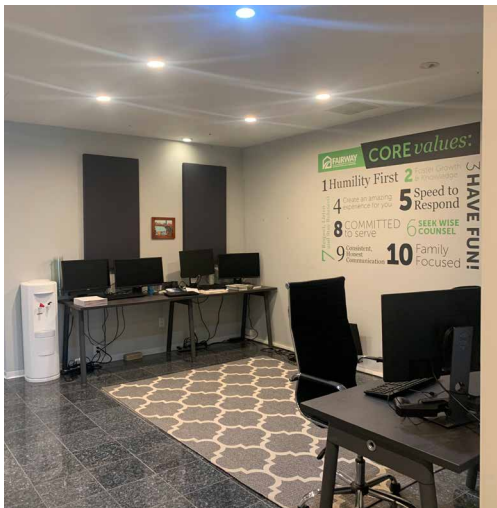
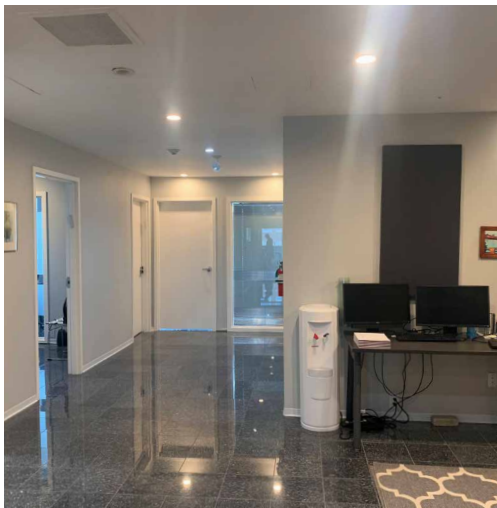


- MBTA Green Line spanning the length of Boylston Street
- Access to the Orange Line and Acela/ Northeast Regional at Back Bay station less than 1/2 mile away
- Easy highway access to Mass Pike and Routes 93 North and South

Located on the prestigious first block of Newbury Street and designed by the internationally renowned architectural firm of Guathmoy Siegal, 37 Newbury is truly a unique opportunity for any retail, office or medical user. The building's design alone makes it more prominent than any other building on the street. Neighboring businesses such as Valentino, Shreve Crump & Lowe, Rolex, Chanel, upscale salons and spas, plastic surgeons, and The Newbury Boston offer any business tremendous access to some of Boston's most elite clientele.

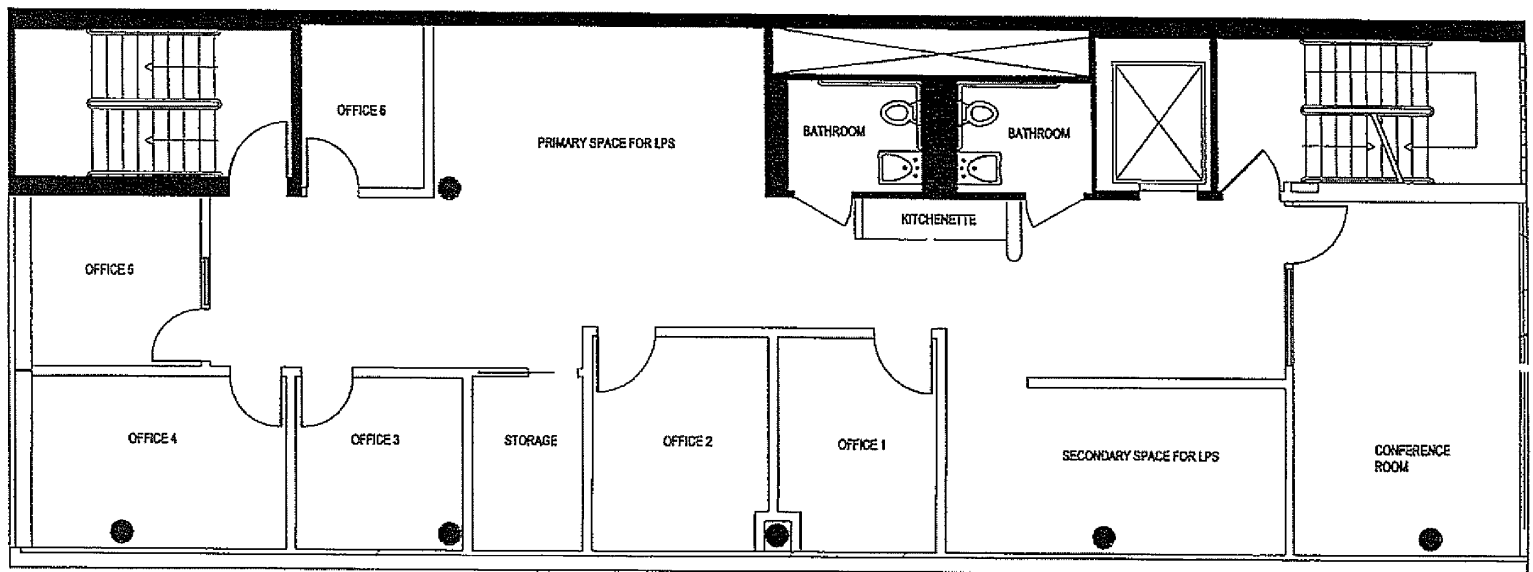


6TH FLOOR | 2,065 SF



FLOOR PLAN

6TH FLOOR
2,065 SF



BONNY L. DOORAKIAN
617.850.9655
bdoorakian@bradvisors.com

WILLIAM H. CATLIN, JR.
617.850.9606
wcatlin@bradvisors.com



136 Newbury Street | Boston, MA 02116 | 617.375.7900 | BRAdvisors.com

© Copyright Boston Realty Advisors. All rights reserved. The information contained here has been obtained through sources deemed reliable but cannot be guaranteed as to its accuracy. Any information of special interest should be obtained through independent verification.