

RESTAURANT PROPERTY // FOR SALE

RESTAURANT & BUSINESS FOR SALE: SANDY'S BY THE BEECH

25853 5 MILE RD

REDFORD TWP, MI 48239



- 3,827 SF free-standing restaurant/bar with real estate
- Updated and fully operational
- Liquor license with outdoor and Sunday permit
- Covered patio/outdoor seating area
- Well-maintained exterior with eye-catching curb appeal
- Prominent street frontage for increased foot traffic
- High-traffic area of 16,000+ VPD
- Surrounded by national tenants including Subway, Family Dollar, and Little Caesars
- Plenty of parking for patrons and staff



P.A. COMMERCIAL
Corporate & Investment Real Estate

26555 Evergreen Road, Suite 1500
Southfield, MI 48076

248.358.0100

pacommercial.com

We obtained the information above from sources we believe to be reliable. However, we have not verified its accuracy and make no guarantee, warranty or representation about it. It is submitted subject to the possibility of errors, omissions, change of price, rental or other conditions, prior sale, lease or financing, or withdrawal without notice. We include projections, opinions, assumptions or estimates for example only, and they may not represent current, past or future performance of the property. You and your tax and legal advisors should conduct your own investigation of the property and transaction.

EXECUTIVE SUMMARY



Sale Price	\$1,950,000
-------------------	--------------------

OFFERING SUMMARY

Building Size:	3,827 SF
Lot Size:	0.04 Acres
Year Built/Updated:	1954 / 2010
Zoning:	C2 Commercial
Market:	Detroit
Submarket:	Detroit/Deraborn
Traffic Count:	16,172

PROPERTY OVERVIEW

Presenting an exceptional opportunity to acquire a beloved cornerstone of Downtown Redford: Sandy's on the Beech. For the first time in 35 years, this iconic restaurant is available for purchase, including the business, real estate, liquor license, equipment, and inventory. With a proven track record of success, the current owners are ready to pass the torch. Qualified buyers will have access to comprehensive sales, expense records, and tax returns.

Recent capital improvements enhance the value of this investment, featuring a new rooftop AC unit installed in 2024 and a roof replacement along with additional AC updates completed in 2010. Don't miss your chance to step into a thriving restaurant with deep community roots!

LOCATION OVERVIEW

A vibrant downtown area, full of tradition, community events, unique stores, and family neighborhoods. National tenants surround the property including Subway, Family Dollar, Little Caesars, and KFC.

25853 5 MILE RD, REDFORD TWP, MI 48239 // FOR SALE

ADDITIONAL PHOTOS



P.A. COMMERCIAL
Corporate & Investment Real Estate

Dan Blugerman, CCIM SENIOR ASSOCIATE
D: 248.987.5418 | C: 248.701.9001
dan@pacommercial.com

Matthew Schiffman CEO/MANAGING MEN
D: 248.281.9907 | C: 248.281.9907
matt@pacommercial.com

We obtained the information above from sources we believe to be reliable. However, we have not verified its accuracy and make no guarantee, warranty or representation about it. It is submitted subject to the possibility of errors, omissions, change of price, rental or other conditions, prior sale, lease or financing, or withdrawal without notice. We include projections, opinions, assumptions or estimates for example only, and they may not represent current, past or future performance of the property. You and your tax and legal advisors should conduct your own investigation of the property and transaction.

25853 5 MILE RD, REDFORD TWP, MI 48239 // FOR SALE

ADDITIONAL PHOTOS



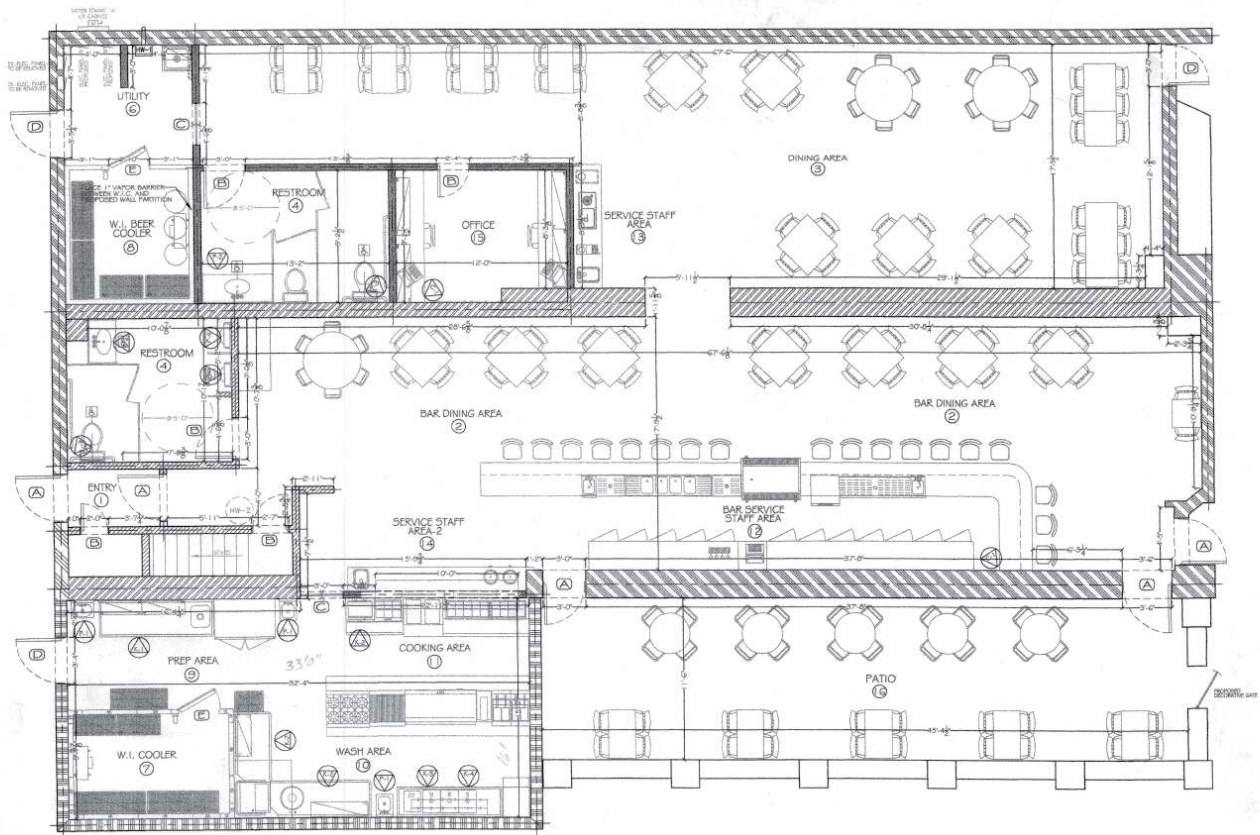
Dan Blugerman, CCIM SENIOR ASSOCIATE
D: 248.987.5418 | C: 248.701.9001
dan@pacommercial.com

Matthew Schiffman CEO/MANAGING MEN
D: 248.281.9907 | C: 248.281.9907
matt@pacommercial.com

We obtained the information above from sources we believe to be reliable. However, we have not verified its accuracy and make no guarantee, warranty or representation about it. It is submitted subject to the possibility of errors, omissions, change of price, rental or other conditions, prior sale, lease or financing, or withdrawal without notice. We include projections, opinions, assumptions or estimates for example only, and they may not represent current, past or future performance of the property. You and your tax and legal advisors should conduct your own investigation of the property and transaction.

25853 5 MILE RD, REDFORD TWP, MI 48239 // FOR SALE

FLOOR PLANS



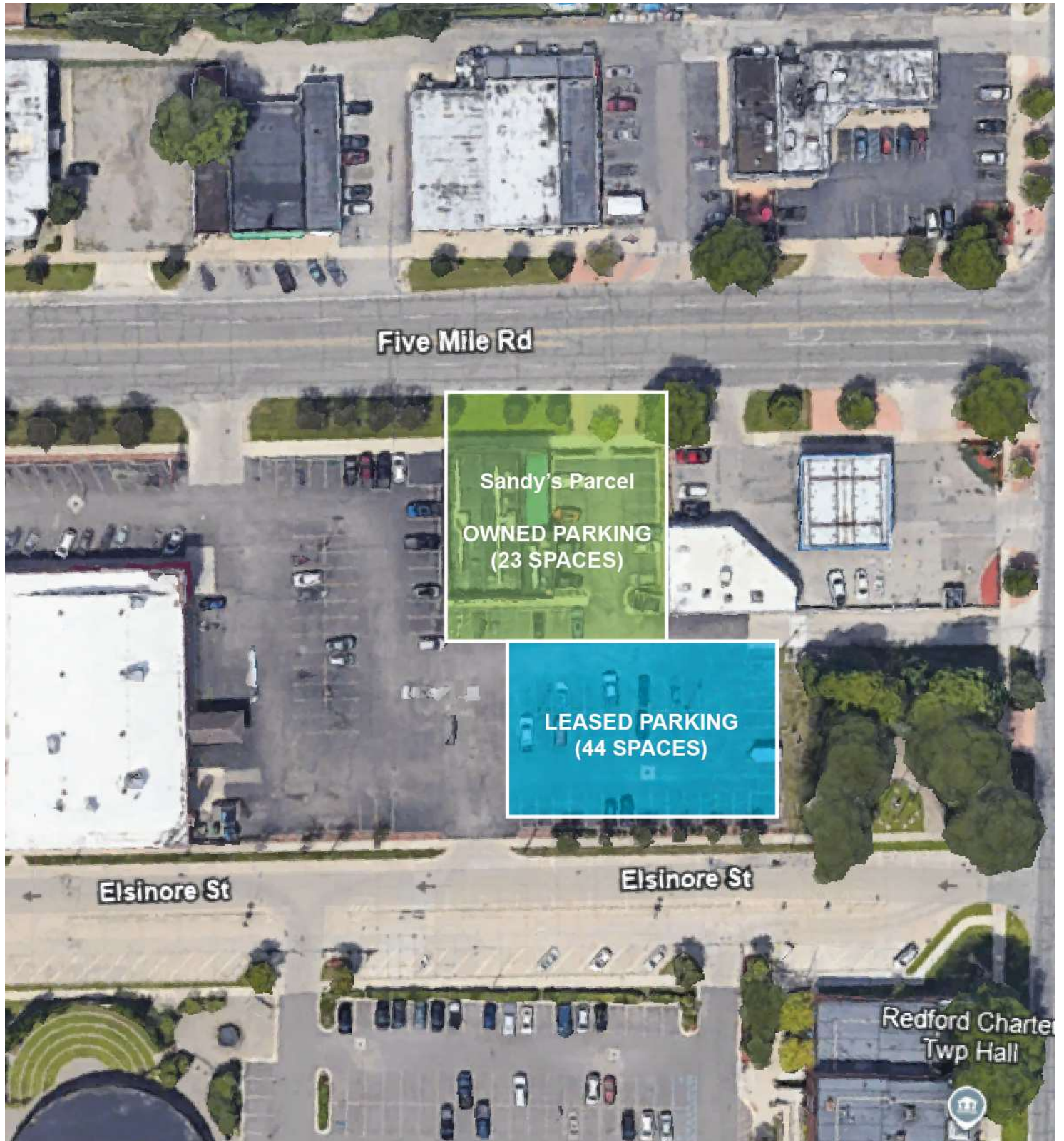
Dan Blugerman, CCIM SENIOR ASSOCIATE
D: 248.987.5418 | C: 248.701.9001
dan@pacommercial.com

Matthew Schiffman CEO/MANAGING MEN
D: 248.281.9907 | C: 248.281.9907
matt@pacommercial.com

We obtained the information above from sources we believe to be reliable. However, we have not verified its accuracy and make no guarantee, warranty or representation about it. It is submitted subject to the possibility of errors, omissions, change of price, rental or other conditions, prior sale, lease or financing, or withdrawal without notice. We include projections, opinions, assumptions or estimates for example only, and they may not represent current, past or future performance of the property. You and your tax and legal advisors should conduct your own investigation of the property and transaction.

25853 5 MILE RD, REDFORD TWP, MI 48239 // FOR SALE

PARKING



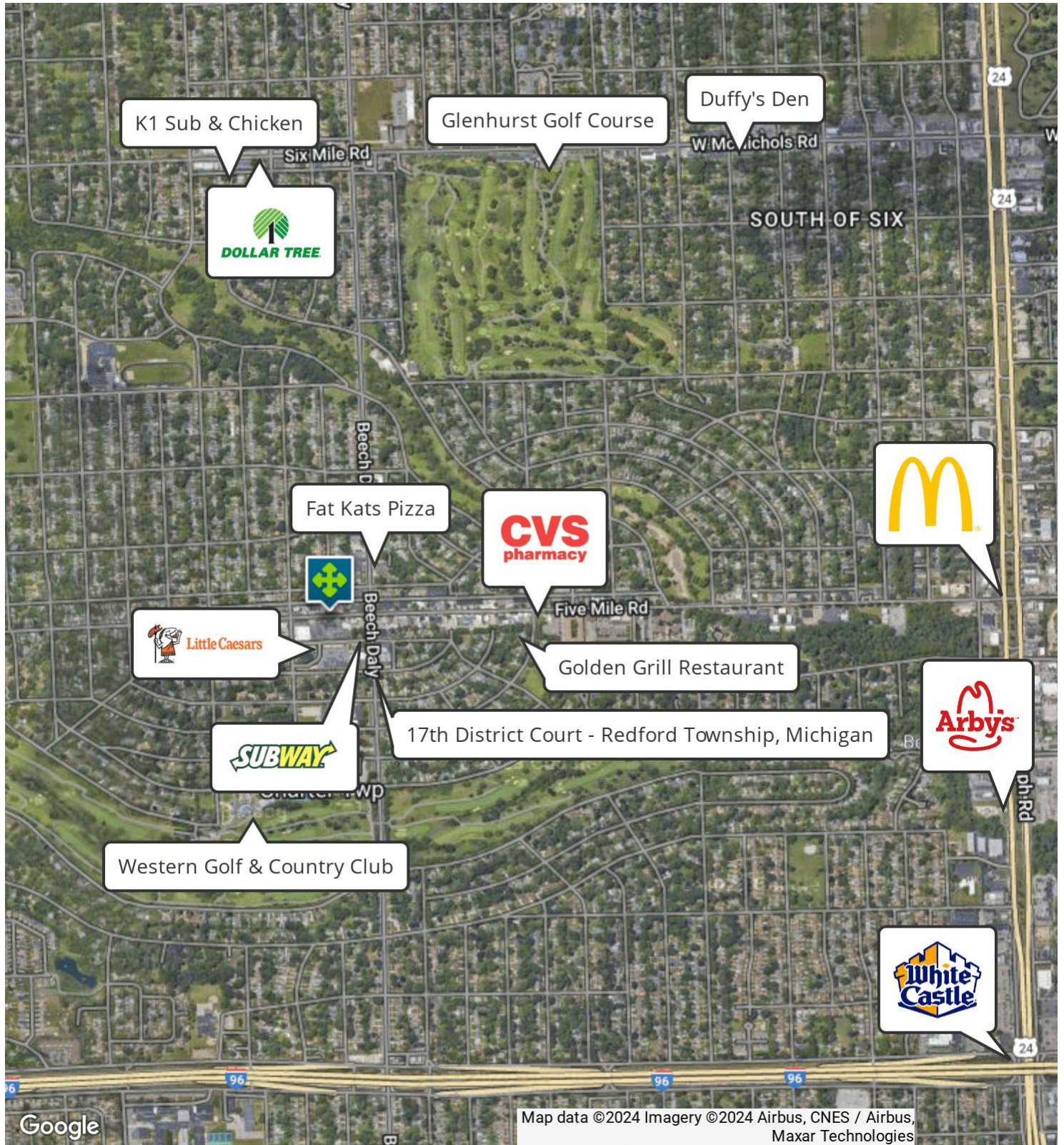
Dan Blugerman, CCIM SENIOR ASSOCIATE
D: 248.987.5418 | C: 248.701.9001
dan@pacommercial.com

Matthew Schiffman CEO/MANAGING MEN
D: 248.281.9907 | C: 248.281.9907
matt@pacommercial.com

We obtained the information above from sources we believe to be reliable. However, we have not verified its accuracy and make no guarantee, warranty or representation about it. It is submitted subject to the possibility of errors, omissions, change of price, rental or other conditions, prior sale, lease or financing, or withdrawal without notice. We include projections, opinions, assumptions or estimates for example only, and they may not represent current, past or future performance of the property. You and your tax and legal advisors should conduct your own investigation of the property and transaction.

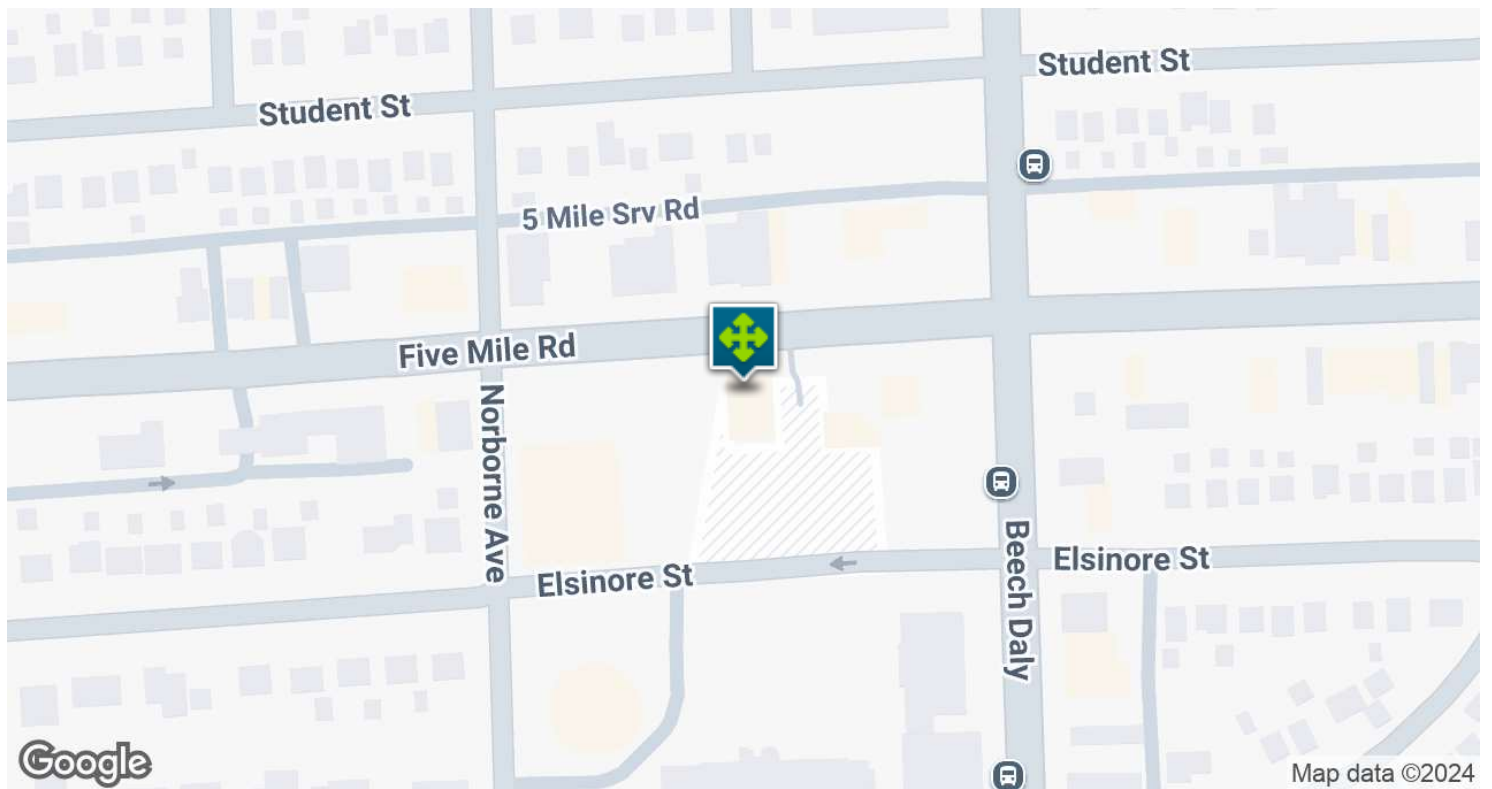
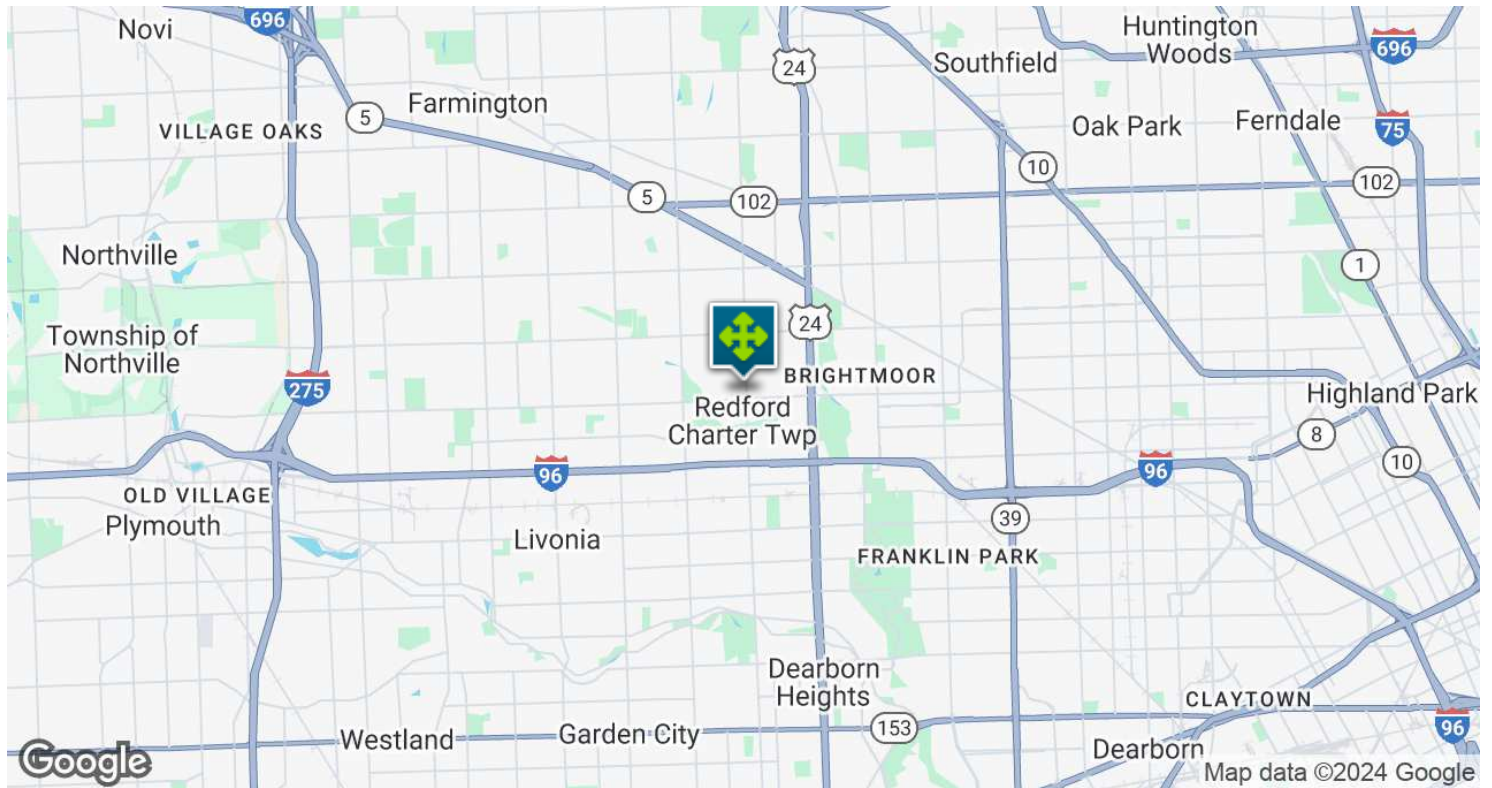
25853 5 MILE RD, REDFORD TWP, MI 48239 // FOR SALE

RETAILER MAP



25853 5 MILE RD, REDFORD TWP, MI 48239 // FOR SALE

LOCATION MAP

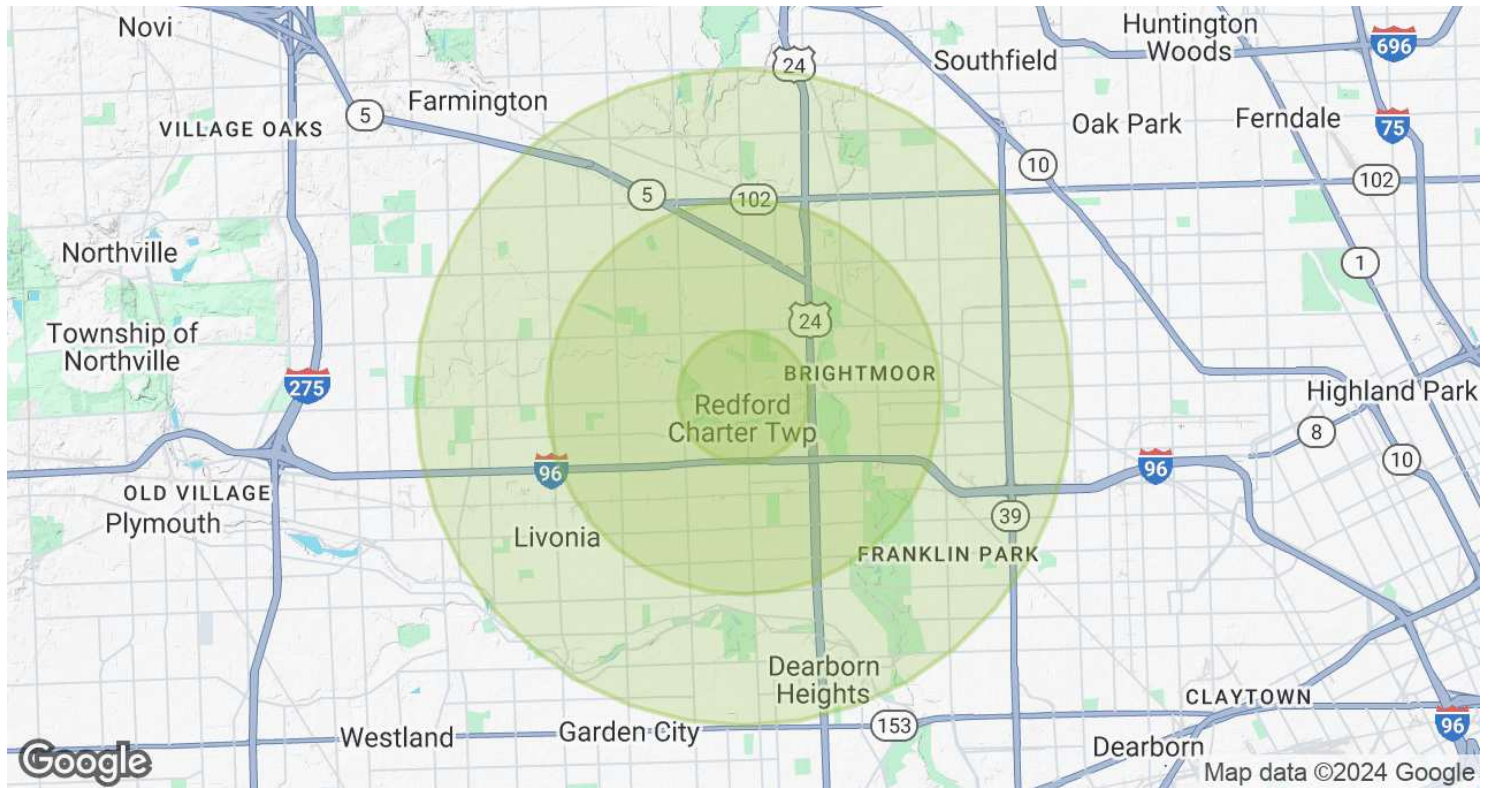


Dan Blugerman, CCIM SENIOR ASSOCIATE
D: 248.987.5418 | C: 248.701.9001
dan@pacommercial.com

Matthew Schiffman CEO/MANAGING MEN
D: 248.281.9907 | C: 248.281.9907
matt@pacommercial.com

We obtained the information above from sources we believe to be reliable. However, we have not verified its accuracy and make no guarantee, warranty or representation about it. It is submitted subject to the possibility of errors, omissions, change of price, rental or other conditions, prior sale, lease or financing, or withdrawal without notice. We include projections, opinions, assumptions or estimates for example only, and they may not represent current, past or future performance of the property. You and your tax and legal advisors should conduct your own investigation of the property and transaction.

DEMOGRAPHICS MAP & REPORT



POPULATION	1 MILE	3 MILES	5 MILES
Total Population	11,668	103,893	295,056
Average Age	41	40	40
Average Age (Male)	40	39	39
Average Age (Female)	42	41	42
HOUSEHOLDS & INCOME	1 MILE	3 MILES	5 MILES
Total Households	4,850	42,636	119,123
# of Persons per HH	2.4	2.4	2.5
Average HH Income	\$87,149	\$76,458	\$76,820
Average House Value	\$148,579	\$156,700	\$170,863

Demographics data derived from AlphaMap

25853 5 MILE RD, REDFORD TWP, MI 48239 // FOR SALE

CONTACT US



FOR MORE INFORMATION, PLEASE CONTACT:



Dan Blugerman, CCIM
SENIOR ASSOCIATE

D: 248.987.5418

C: 248.701.9001

dan@pacommercial.com



Matthew Schiffman
CEO/MANAGING MEMBER

D: 248.281.9907

C: 248.281.9907

matt@pacommercial.com

P.A. Commercial

26555 Evergreen Road, Suite 1500
Southfield, MI 48076

P: 248.358.0100

F: 248.358.5300

pacommercial.com

Follow Us!



 **P.A. COMMERCIAL**
Corporate & Investment Real Estate

We obtained the information above from sources we believe to be reliable. However, we have not verified its accuracy and make no guarantee, warranty or representation about it. It is submitted subject to the possibility of errors, omissions, change of price, rental or other conditions, prior sale, lease or financing, or withdrawal without notice. We include projections, opinions, assumptions or estimates for example only, and they may not represent current, past or future performance of the property. You and your tax and legal advisors should conduct your own investigation of the property and transaction.