



Johnny F. Smith Memorial Business Park - Phase II

501 Johnny F. Smith Avenue
Slidell, La 70460



SITE INFORMATION

ACRES AVAILABLE:

38.1 Acres

PROPERTY TYPE:

Commercial

TERRAIN:

Flat

SUB DIVIDABLE:

Yes

PRIOR/CURRENT USE:

Agricultural

OWNER:

Johnny F. Smith Business Park, LLC

NEAREST MSA:

New Orleans

Population: 1,227,096

Distance: 0 miles

Baton Rouge

Population: 815,298

Distance: 48 miles

COORDINATES:

30.322693, -89.773922

UTILITIES

ELECTRICITY:

CLECO

NATURAL GAS:

ATMOS

WATER:

Resolve Systems

SEWER:

Resolve Systems

TELECOM:

AT&T

FIBER OPTIC:

No Fiber Optic



TRANSPORTATION LOGISTICS

INTERSTATE:

I-12

Distance: 1.1 miles

HIGHWAY:

US-11

Distance: 0.4 miles

RAIL:

Norfolk Southern Railroad

Distance: 0.2 miles

AIRPORT:

Louis Armstrong New Orleans International Airport (MSY)

Distance: 47.3 miles

PORT:

Port of New Orleans

Distance: 38.7 miles



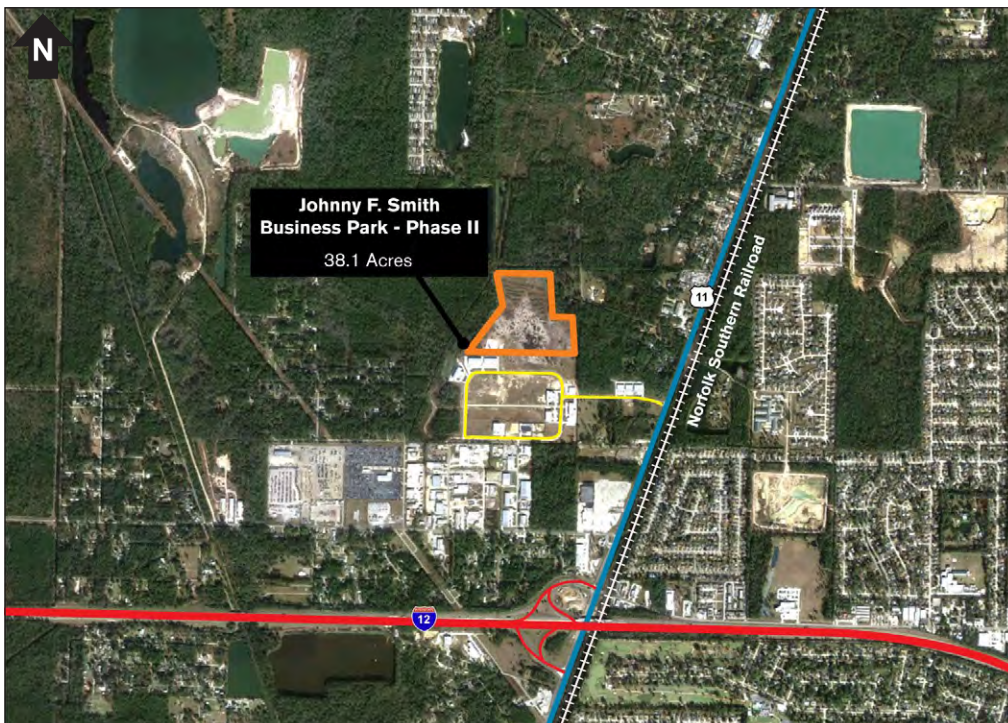
Site Located in
St. Tammany Parish

FIND OUT MORE: OpportunityLouisiana.com
800.450.8115



Johnny F. Smith Memorial Business Park - Phase II

Johnny Lane
Slidell, La 70460



FIND OUT MORE: OpportunityLouisiana.com
800.450.8115