



10500 MIRAMAR PARKWAY

FOR SALE • HIGH-TRAFFIC FORMER BANK SITE
10500 MIRAMAR PARKWAY • MIRAMAR, FL 33025



CONTACT US:

CHRIS BARNEY

Partner
954.520.7692
Chris.Barney@TrinityCRE.com

SPENCER DAVIS

Advisor
239.564.1313
Spencer.Davis@TrinityCRE.com

SAM DALTON

Advisor
484.340.9098
Sam.Dalton@TrinityCRE.com





10500 MIRAMAR PARKWAY

FOR SALE · HIGH-TRAFFIC FORMER BANK SITE
10500 MIRAMAR PARKWAY · MIRAMAR, FL 33025



2025 DEMOGRAPHICS 10500 MIRAMAR PARKWAY



	1 MILE	3 MILE	5 MILE
AVERAGE H.H INCOME	\$109,783	\$89,644	\$102,420
POPULATION	9,284	181,960	448,160
EMPLOYMENT DENSITY	16,266	66,846	186,175

PROPERTY FEATURES

SALE PRICE	Please Call for Details
BUILDING SIZE	2,873± SF
ACREAGE	1.12 Acres
ZONING	Planned Industrial Development (PID)
PARKING	28 Spaces
ALLOWABLE USES	Banks, Credit Unions, Savings & Loans, Similar Financial Institutions, or General Professional Office Uses

- HIGHLIGHTS**
- Three Lane Drive Thru Retail
 - At Entrance of 5.2M SF Park of Commerce
 - Strong Visibility & Easy Access

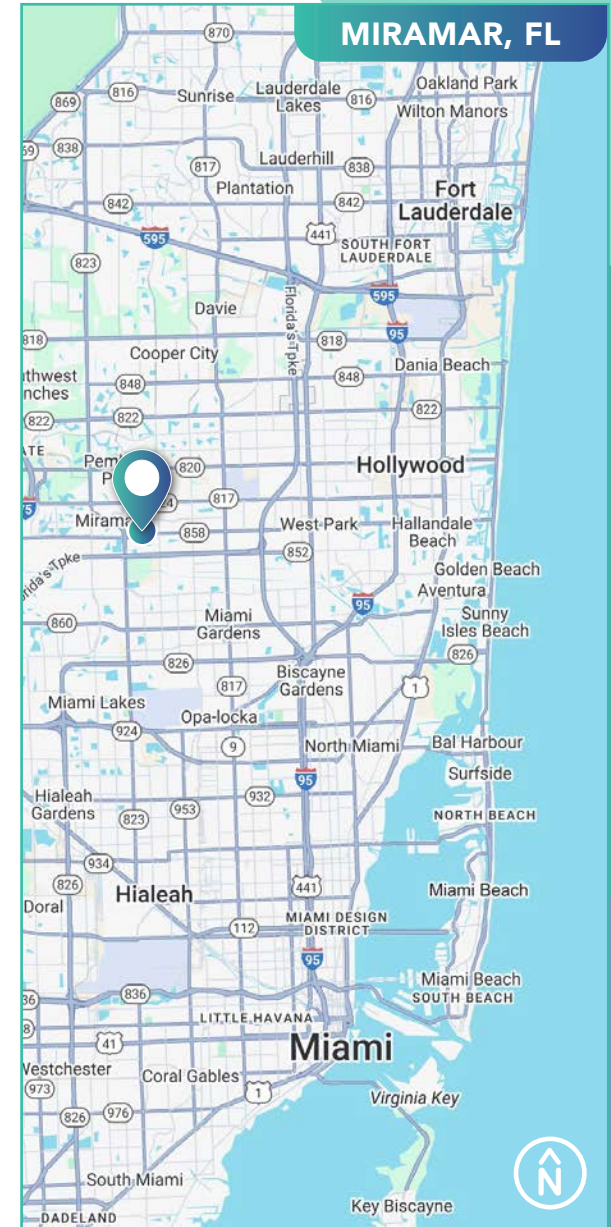


10500 MIRAMAR PARKWAY

FOR SALE · HIGH-TRAFFIC FORMER BANK SITE
10500 MIRAMAR PARKWAY · MIRAMAR, FL 33025



BUILDING PHOTOS



CONTACT US:

CHRIS BARNEY

Partner
954.520.7692
Chris.Barney@TrinityCRE.com

SPENCER DAVIS

Advisor
239.564.1313
Spencer.Davis@TrinityCRE.com

SAM DALTON

Advisor
484.340.9098
Sam.Dalton@TrinityCRE.com

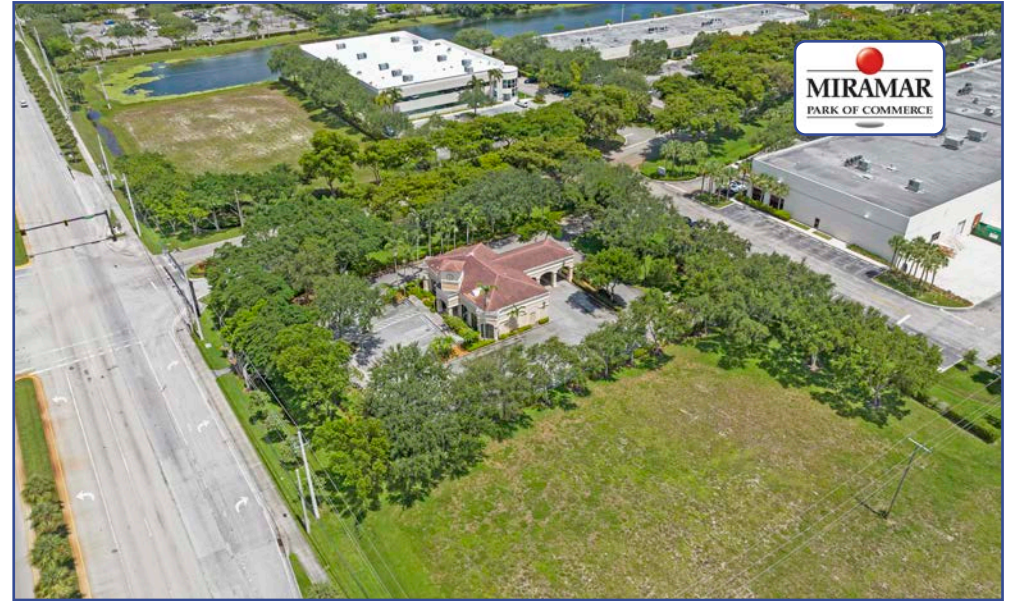




10500 MIRAMAR PARKWAY

FOR SALE • HIGH-TRAFFIC FORMER BANK SITE
10500 MIRAMAR PARKWAY • MIRAMAR, FL 33025

AERIAL PHOTOS



© 2025 Trinity Commercial Group | TrinityCRE.com

This information is considered accurate, but not guaranteed. TCG has been engaged by the owner of the property to market it for sale. Information concerning the property described herein has been obtained from sources other than TCG and we make no representations or warranties, express or implied, as to the accuracy or completeness of such information. Any and all references to age, square footage, income expenses, and any other property specific information are approximate. Any opinions, assumptions, or estimates contained herein are projections only and used for illustrative purposes and may be based on assumptions or due diligence criteria different from that used by a buyer. Buyers should conduct their own independent investigation and rely on those results. The information herein is subject to change.

10500 MIRAMAR PARKWAY



FOR SALE • HIGH-TRAFFIC FORMER BANK SITE
10500 MIRAMAR PARKWAY • MIRAMAR, FL 33025



5.2 Million Square Feet
165 Tenants | 15,000± Employees

- ACME Furniture
- ADT
- Airgas
- Amerant Bank
- Apria Healthcare
- Aramark
- AVEVA
- Berlin Packaging
- Breakthru Beverage
- Breezeline
- Calvin Klein
- Coaster Company of America
- Concorde Career College
- Federal Express
- Humana
- International Aircraft
- JL Audio
- KONE MAK Americas, a Caterpillar Company
- Memorial Healthcare System
- Miramar Fire Dept.
- Neiman Marcus
- Nissan
- Pepperidge Farm
- Siemens
- Southern Glazer's Wine & Spirits
- Space Coast Credit Union
- Spirit Airlines
- Stanley Black & Decker
- Sunbelt Rentals
- TEVA Pharmaceuticals
- Tommy Hilfiger
- Toyota/Lexus
- Trane
- Tropical Financial Credit Union
- Tyco
- Vitas
- Walgreen Co.

