



STARBOARD CRE
LOCAL • INDEPENDENT • ENTREPRENEURIAL

For Lease

844-848 Folsom St

San Francisco, CA 94107

Spacious second-floor office in SoMa
with ample storage and natural light.

HANS HANSSON
415-517-2589

CRAIG HANSSON
415-710-7768



STARBOARDCRE.COM
49 POWELL STREET, SAN FRANCISCO, CA 94102

Building: 844-848 Folsom Street
Suite: 2nd Floor
Size: 2,200 SF
Rate: \$34 IG
Type: Industrial Gross
Term: 1 to 5 years

848 Folsom Street is located in the Folsom Street corridor between 4th & 5th Street. Located 1 block away which will connect BART and Caltrans, allowing easy access for employees coming from the East or South Bay. 848 Folsom is also located in the epicenter of San Francisco's technology hub. Folsom Street allows for access to a plethora of restaurants, bars, and other amenities.

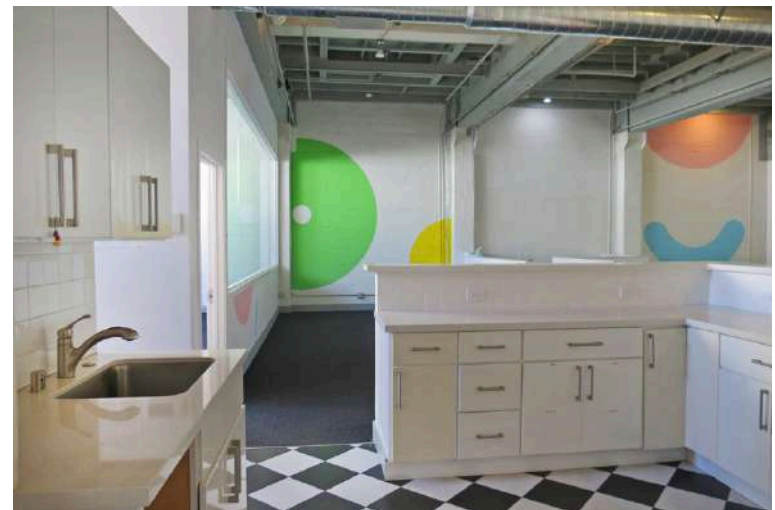


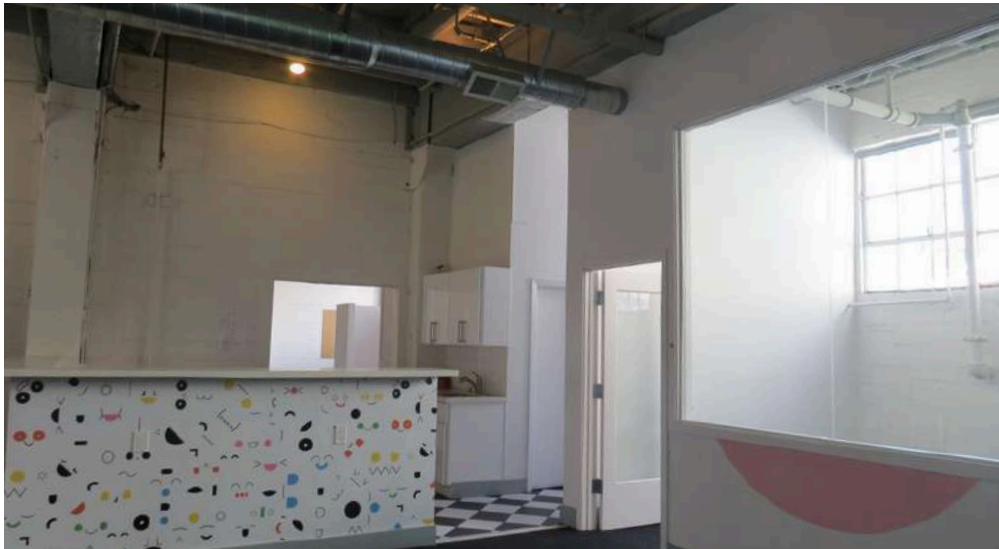
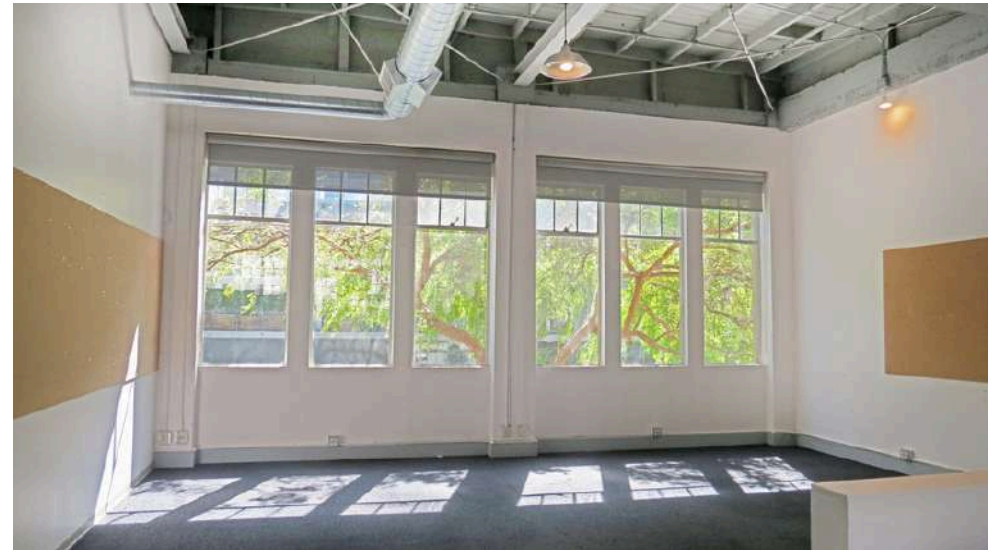
Highlights

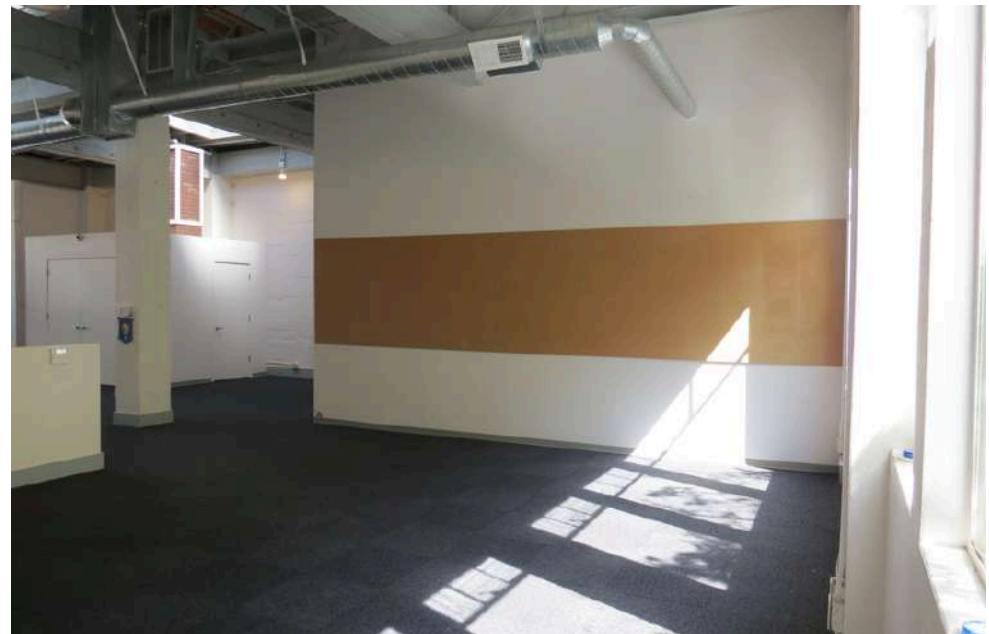
- Spacious second-floor laid out into two open areas with lots of light
- Lots of storage throughout
- 3 ADA bathrooms
- Open kitchen with large countertops
- Cozy private quiet/phone room
- 2 small private offices/rooms
- 2 medium meeting/office rooms
- 2 large meeting/office rooms

Nearby Businesses

- Toca Boca Toy manufacturer
- Dreambound Corporate office
- The Trustee Group Investment company
- Good business design Internet marketing service
- Branding SF Marketing consultant

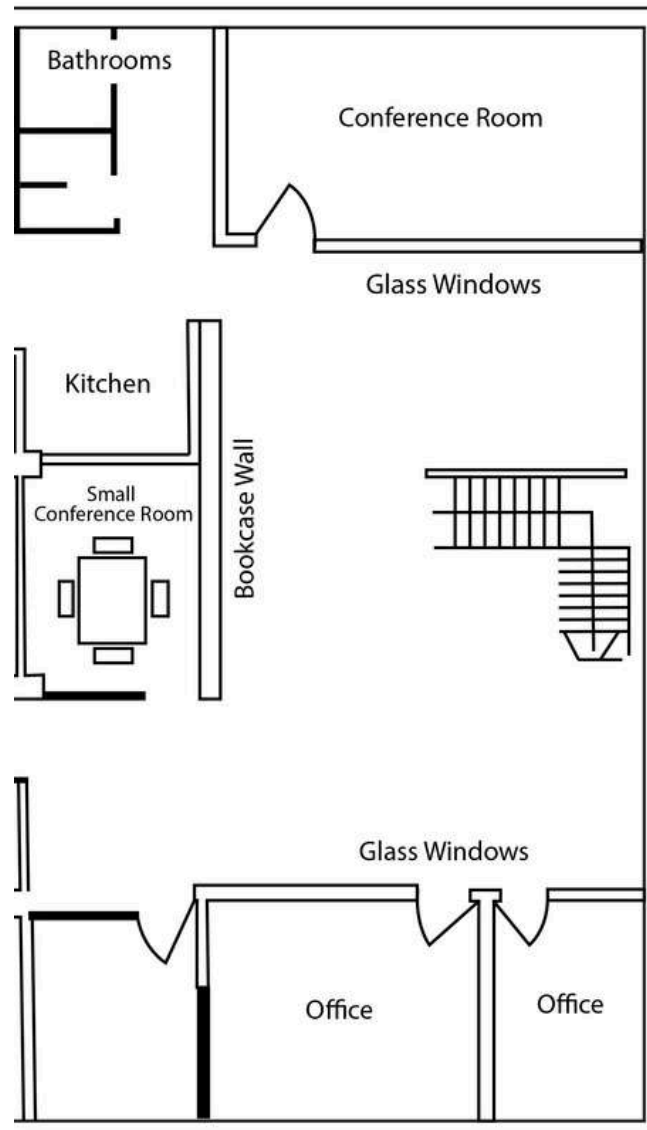






FLOOR PLAN

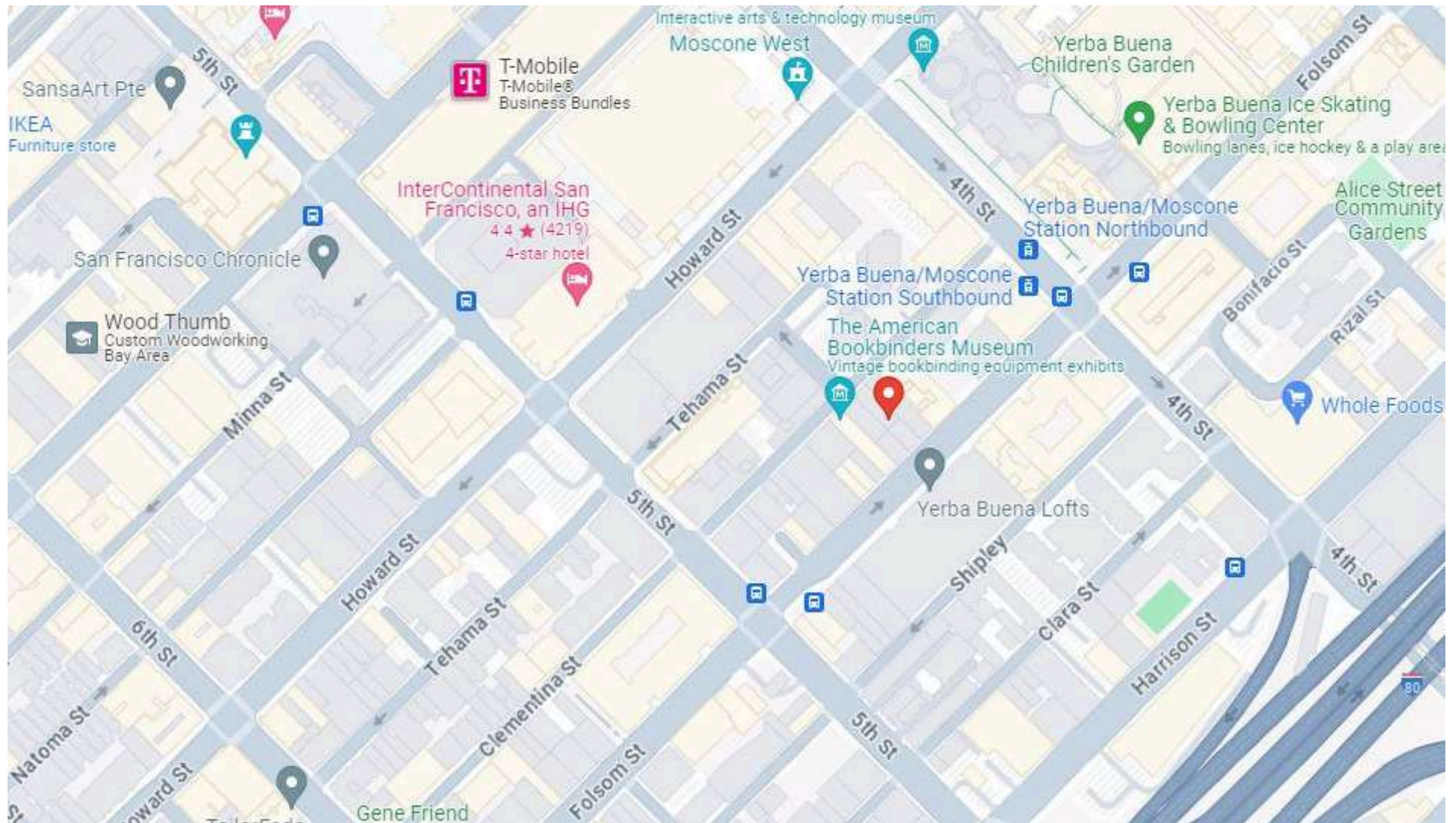
For Lease



This information has been secured by Starboard CRE from sources believed to be reliable. It is not guaranteed and should be verified before closing any transaction.

AMENITIES MAP

For Lease



This information has been secured by Starboard CRE from sources believed to be reliable. It is not guaranteed and should be verified before closing any transaction.

STARBOARD CRE
LOCAL • INDEPENDENT • ENTREPRENEURIAL



HANS HANSSON

President / Broker of Record
hans@starboardcre.com
CELL: 415.517.2589
CA DRE # 00872902

[Call](#)[View Profile](#)

CRAIG HANSSON

Vice President
craig@starboardcre.com
CELL: 415.710.7768
CA DRE # 01841643

[Call](#)[View Profile](#)



STARBOARD CRE
LOCAL • INDEPENDENT • ENTREPRENEURIAL

STARBOARDCRE.COM
OFC. PHONE 415.765.6900
49 POWELL STREET, SAN FRANCISCO, CA 94102



Unique Vision
We see what others miss

Local Market Leader
No one knows Northern
California like we do

Full-Service Firm
We do it all

Locally based, and technology-forward, our brokers are highly qualified experts backed by a full-service, in-house support team who understand the intricacies of San Francisco real estate. Starboard CRE brings decades of brokerage experience representing over 600 million square feet of space with an aggregate lease value of over 10 billion and investments sold over 3 billion.

CA DRE# 01103056

TCN
WORLDWIDE
REAL ESTATE SERVICES

AREA
ASSOCIATED REALTY OF THE AMERICAS