



For Lease

70 W Streetsboro Street
Hudson, OH

Office Space For Lease

- Space Sizes: 171 SF - 2,092 SF
- Lease Rates: \$7.15 - \$16.77/ SF MG
- Various office sizes and layouts
- Landlord pays all utilities except for WiFi
- Ample parking available
- Zoned: Village Core District
- Central location in Hudson near shops and restaurants

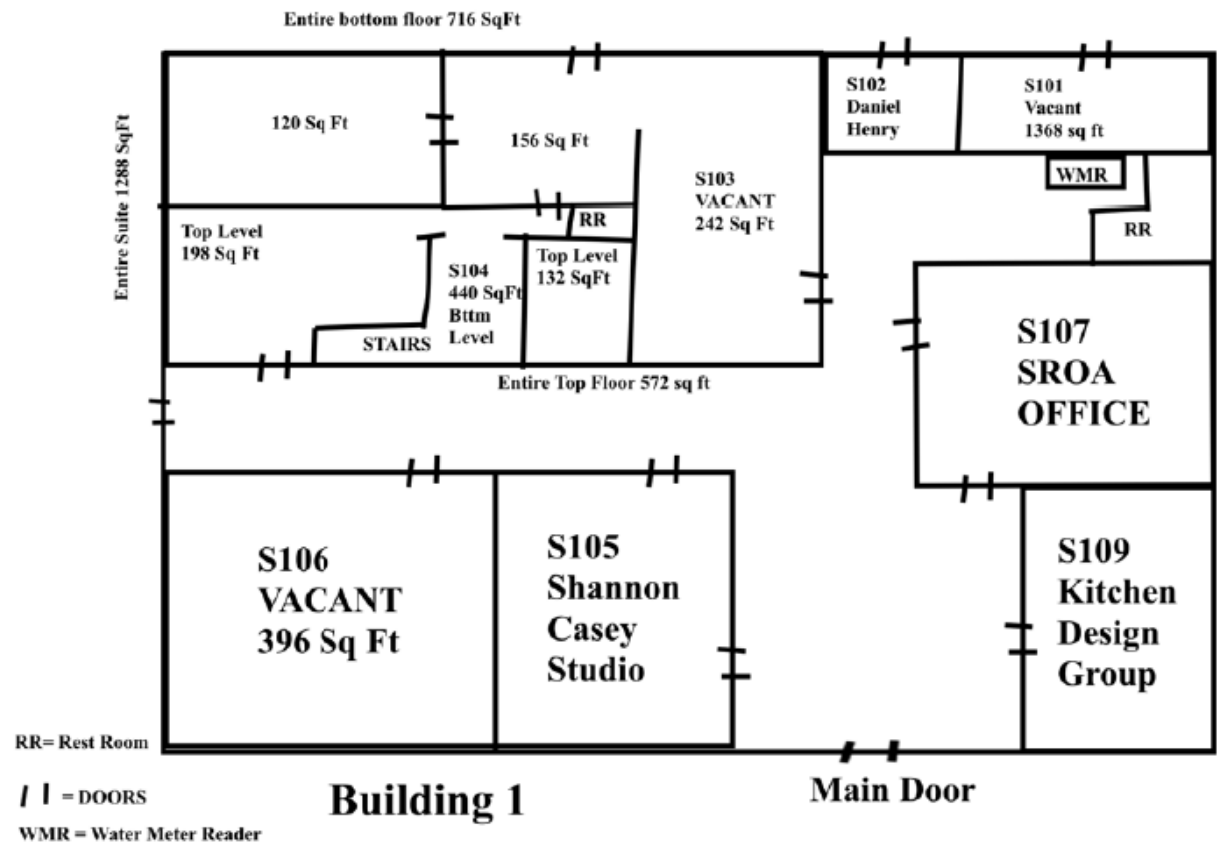


Available Spaces

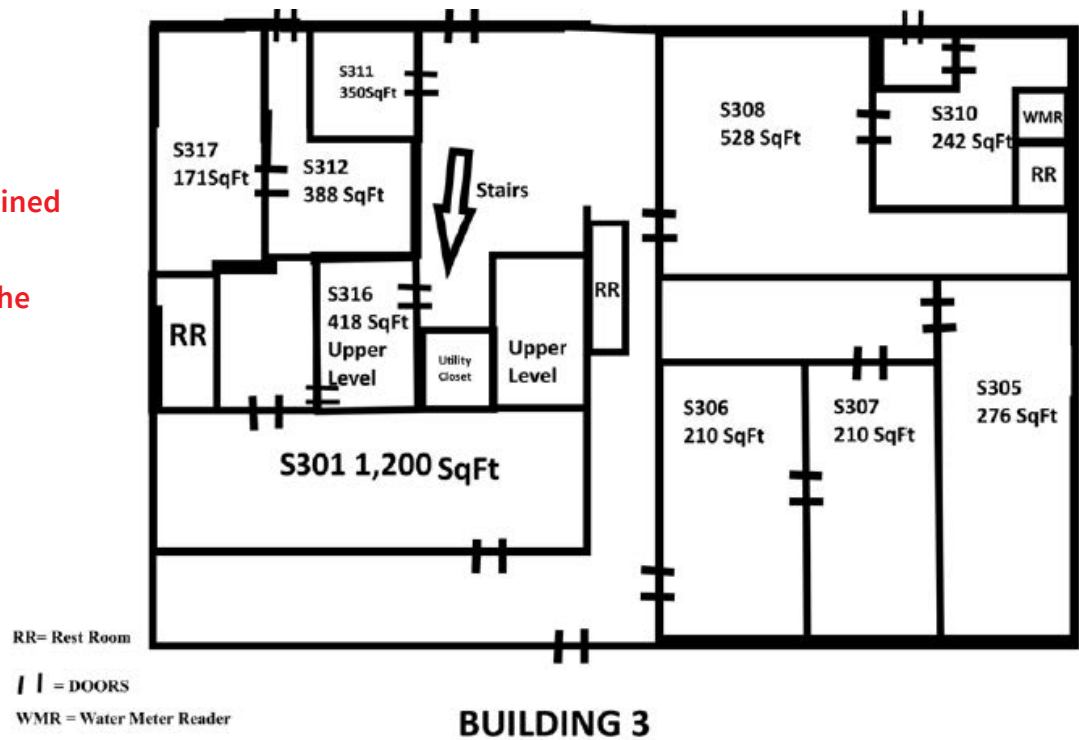
Office S307	210 SF \$231.00/ Month
Office S106	396 SF \$463.00/Month
Office S212	812 SF \$615.00/ Month
Office S20607	271 SF \$316.00/ Month
Office S211	418 SF \$397.00/ Month
Office S204	1,014 SF \$189.00/ Month
Office S301	1,200 SF \$1,140.00/ Month
Office S210	377 SF \$358.00/ Month
Office S318	595 SF \$399.00/ Month
Office S101	1,368 SF \$1,299.00/ Month
Office S209	388 SF \$368.00/ Month
Office S213	515 SF \$359.00/ Month
Office S201	2,092 SF \$1,500.00/ Month
Office S312	388 SF \$368.00/ Month
Office S317	171 SF \$239.00/ Month

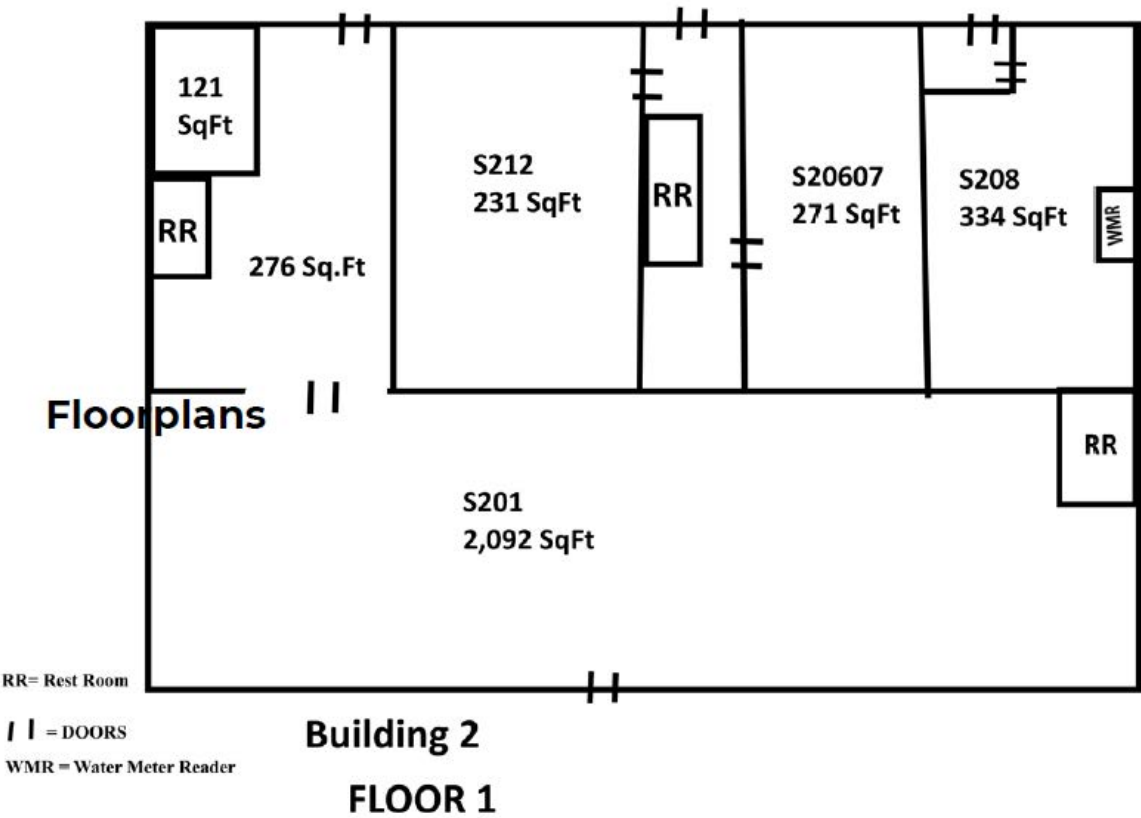


- Lease rates listed above include all utilities (electric, gas, water, trash) except for Wi-Fi which Tenant is responsible for.
- Additional CAM charge (\$50/month) is not included in the lease rates.
- Offices can be combined with adjoining offices to achieve needed size.

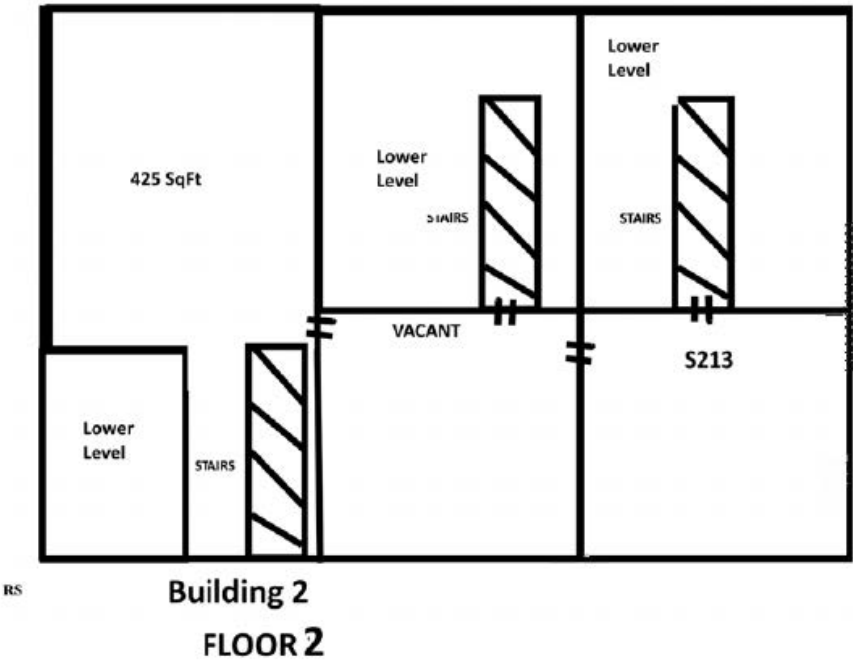


Office can be combined
with adjoining
offices to achieve the
size you need.





Office can be combined
with adjoining
offices to achieve the
size you need.







Demographics	1 mile	3 miles	5 miles
Estimated population	4,974	25,403	64,399
Estimated households	1,800	8,985	24,663
Est. Average HH income	\$153,496	\$159,702	\$122,337

Sam Everson

Associate

samuel.everson@jll.com

+1 (440) 503 1150

jll.com