



HARBERT
REALTY SERVICES



FOR LEASE | LARGEST BLOCK OF SPACE IN CENTRAL FLORIDA



633 North Orange Avenue
Orlando, FL 32801



321,608 RSF - Total
164,972 RSF - Office
156,636 RSF - Industrial

UNIQUE OFFICE/INDUSTRIAL OPPORTUNITY IN THE HEART OF DOWNTOWN ORLANDO

INDUSTRIAL PORTION

321,608 RSF - Available

- **Largest block of space in Central Florida**
- 164,972 RSF office building
- 156,636 RSF industrial building
- Unique opportunity in the heart of Downtown Orlando
- High visibility with on-site free surface parking
- Easy access to Interstate 4, SR 408 and all major thoroughfares
- Within blocks of the SunRail station and LYNX Central station
- Less than 1 mile from the Orange County Courthouse
- Close proximity to the Central Business District, The Dr. Phillips Performing Arts Center, The Amway Center and the Sports Entertainment District
- Within walking distance to Creative Village (UCF/Valencia College)

VIEW THE VIDEO



Office Building



Industrial Building



The information contained herein has been obtained from sources deemed reliable, however, HRS makes no guarantees, warranties or representation as to its completeness or accuracy thereof. The presentation of this property is submitted subject to errors, omissions, change of price or conditions, prior to sale or lease or withdrawal without notice.

Damien Madsen
dmadsen@harbertrealty.com
407.256.2844

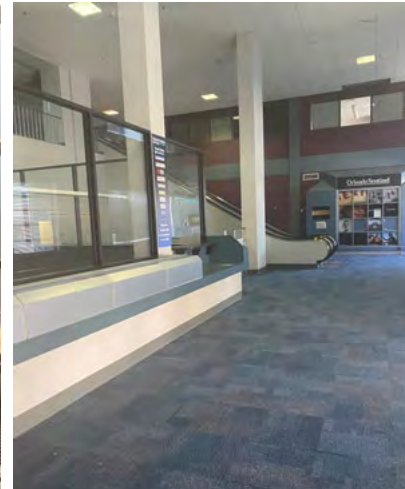
Josh Smith
jsmith@harbertrealty.com
407.377.4050

HarbertRealty.com

OFFICE BUILDING



SKY BRIDGE



LOBBY



OFFICE



OFFICE HALLWAY

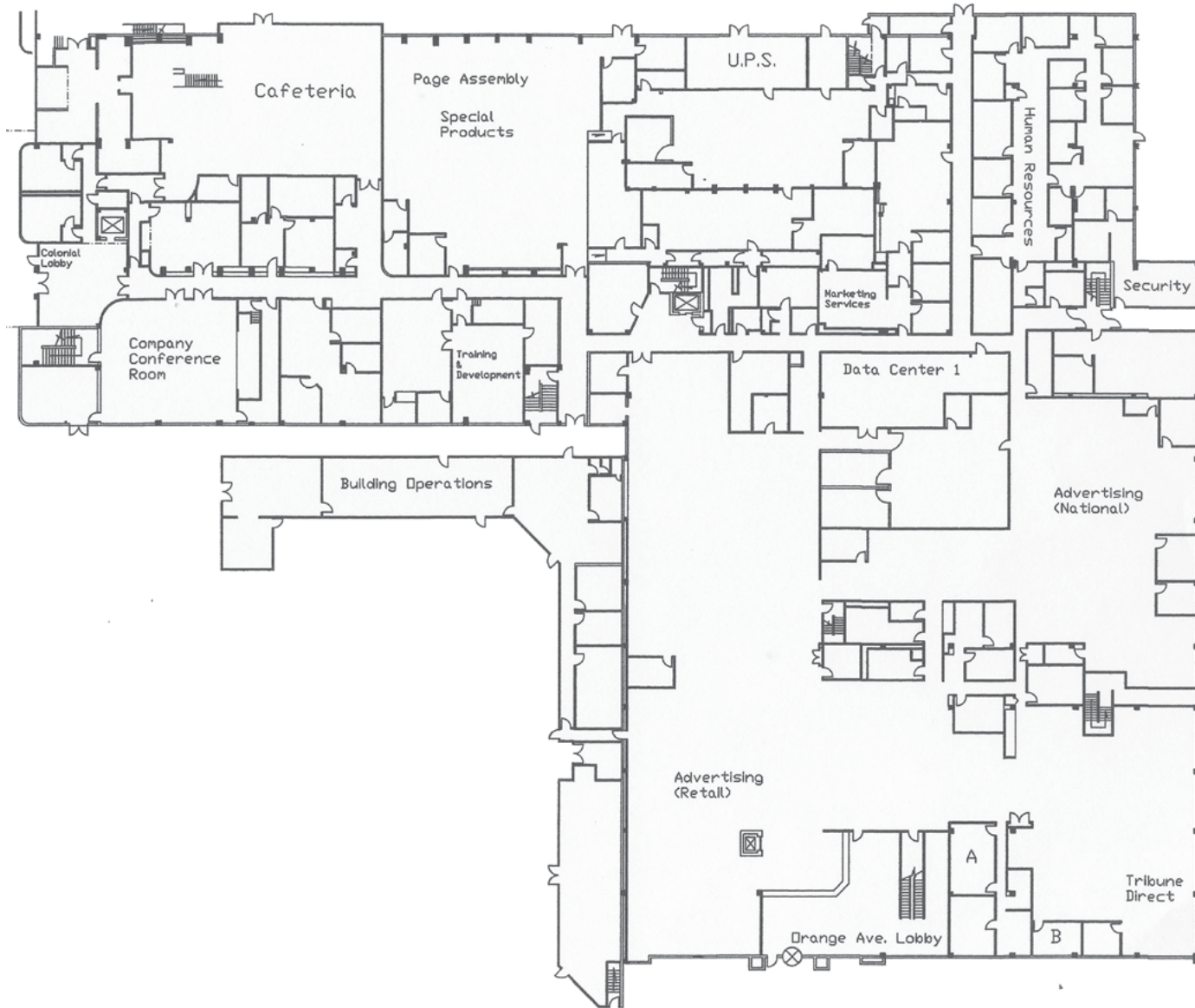


FOOD HALL



CONFERENCE ROOM

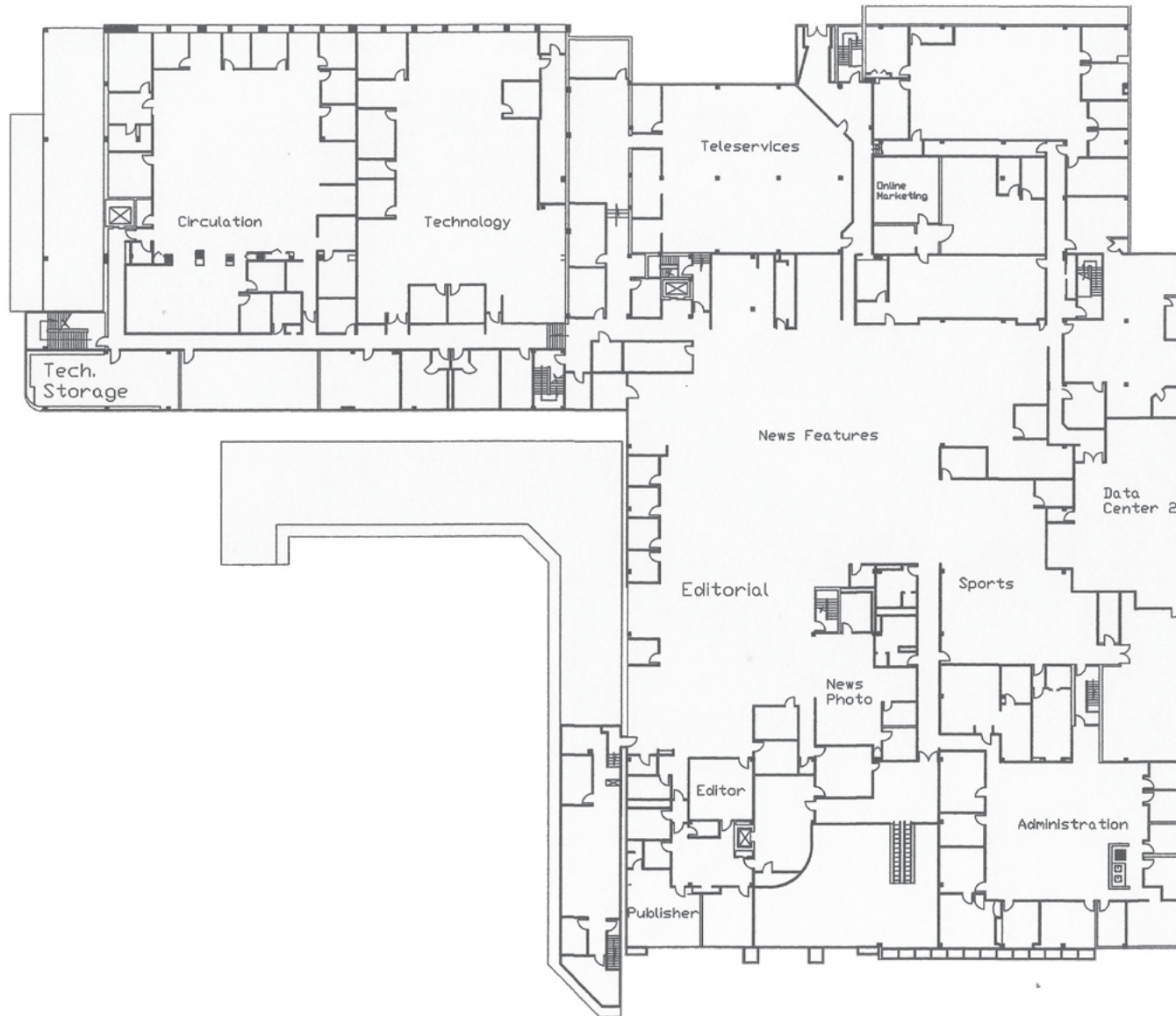
FIRST FLOOR - 84,775± RSF



The information contained herein has been obtained from sources deemed reliable, however, HRS makes no guarantees, warranties or representation as to its completeness or accuracy thereof. The presentation of this property is submitted subject to errors, omissions, change of price or conditions, prior to sale or lease or withdrawal without notice.

Damien Madsen
dmadsen@harbertrealty.com
407.256.2844

Josh Smith
jsmith@harbertrealty.com
407.377.4050

SECOND FLOOR - 84,775± RSF

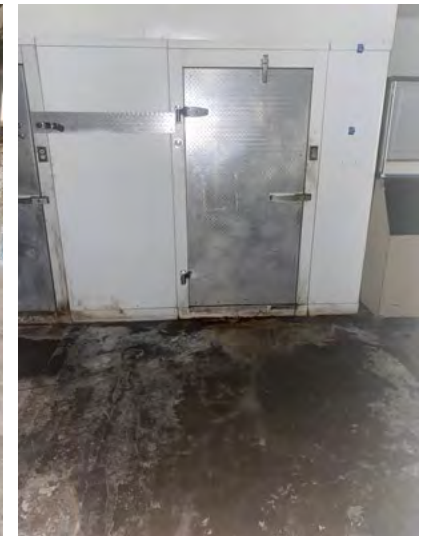
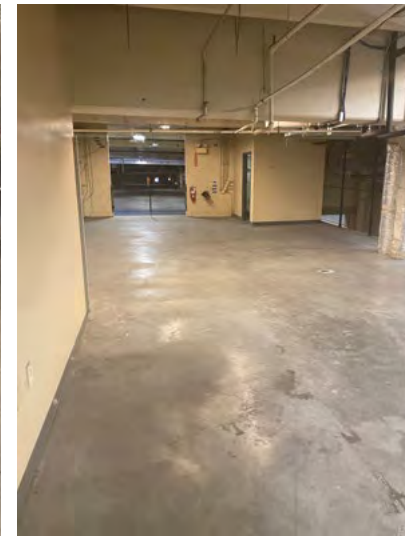
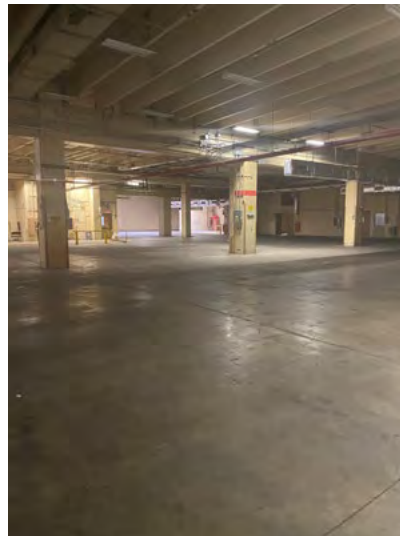
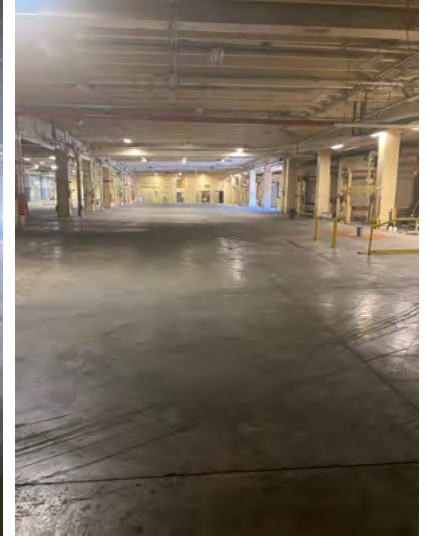
The information contained herein has been obtained from sources deemed reliable, however, HRS makes no guarantees, warranties or representation as to its completeness or accuracy thereof. The presentation of this property is submitted subject to errors, omissions, change of price or conditions, prior to sale or lease or withdrawal without notice.

Damien Madsen
dmadsen@harbertrealty.com
407.256.2844

Josh Smith
jsmith@harbertrealty.com
407.377.4050

HarbertRealty.com

INDUSTRIAL BUILDING



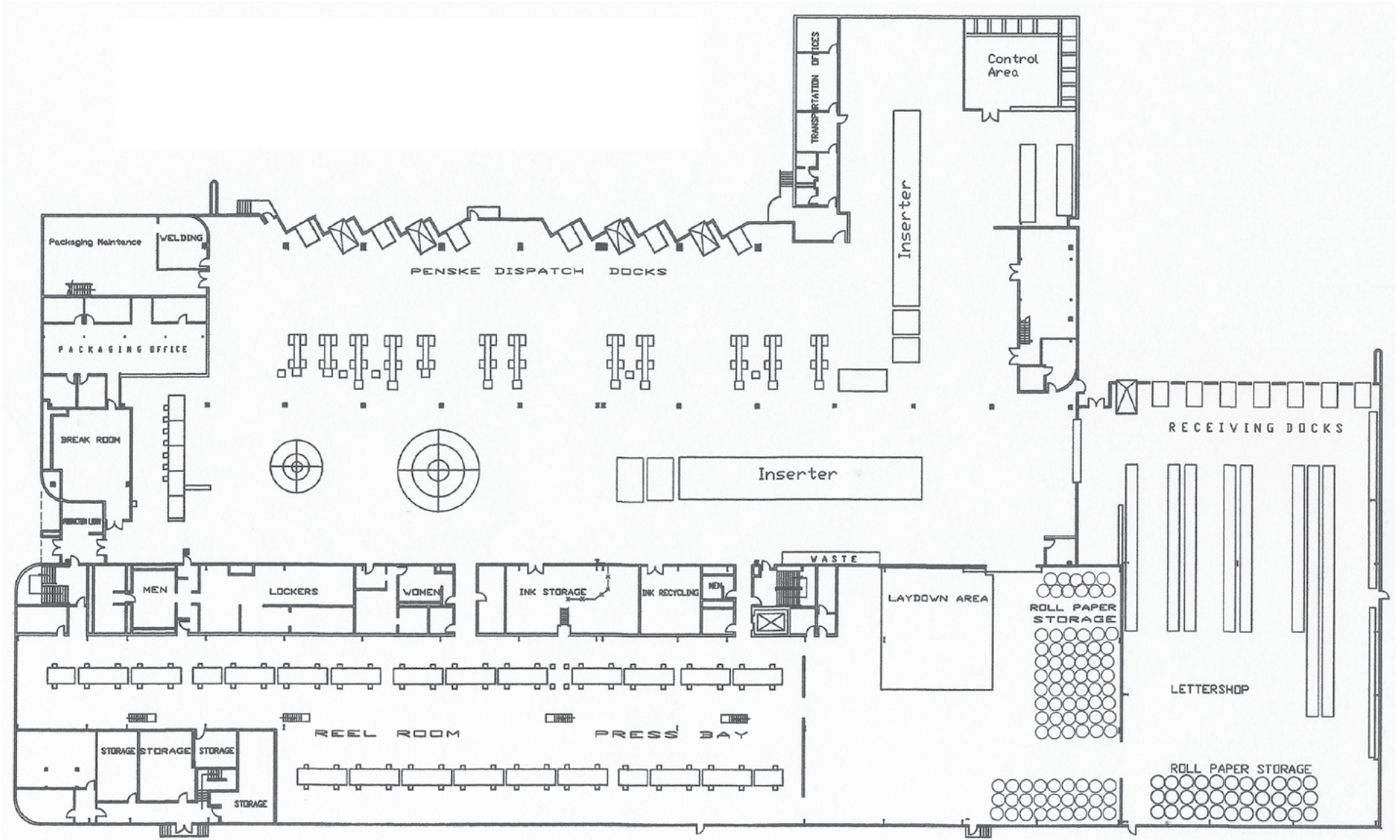
The information contained herein has been obtained from sources deemed reliable, however, HRS makes no guarantees, warranties or representation as to its completeness or accuracy thereof. The presentation of this property is submitted subject to errors, omissions, change of price or conditions, prior to sale or lease or withdrawal without notice.

Damien Madsen
dmadsen@harbertrealty.com
407.256.2844

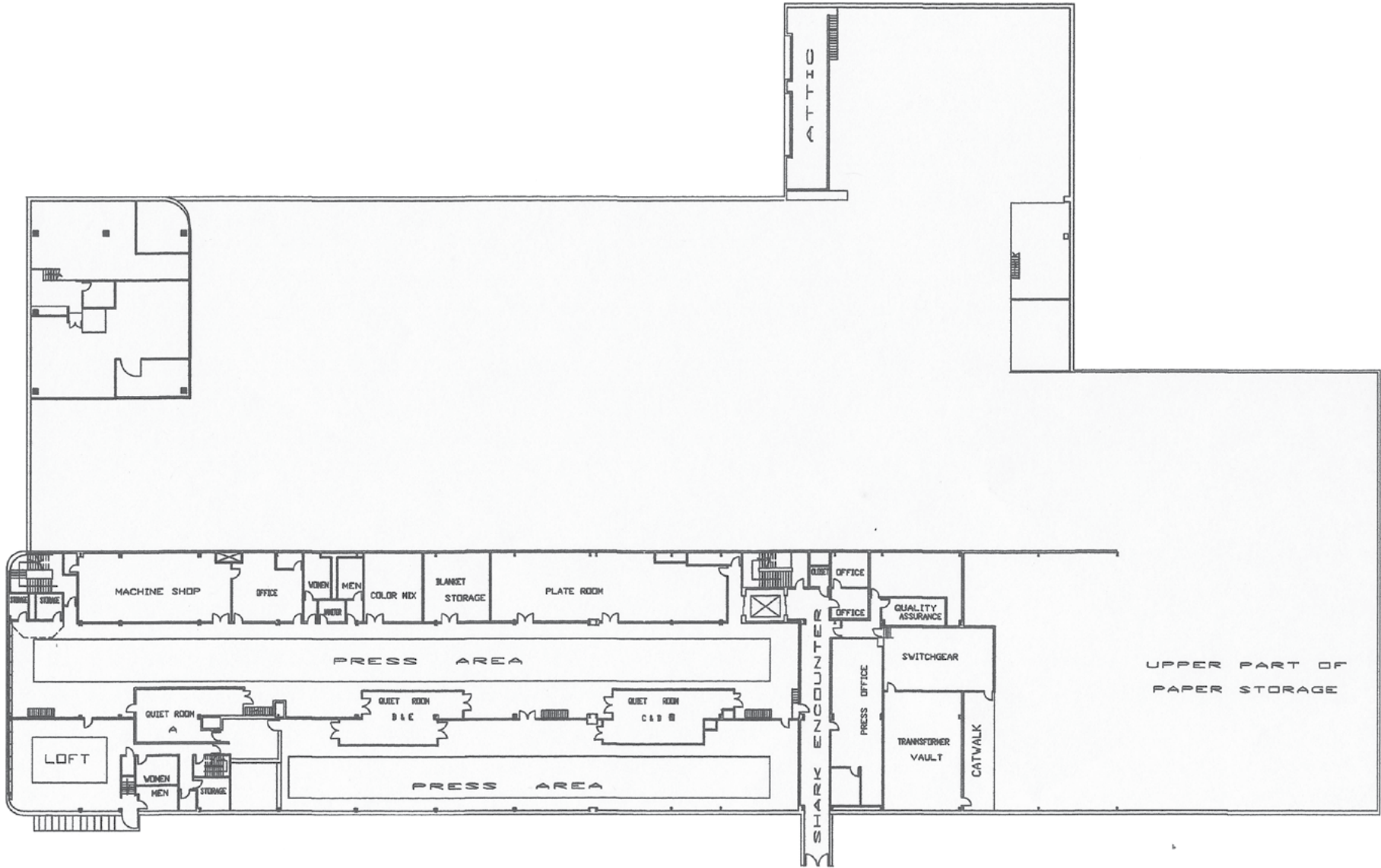
Josh Smith
jsmith@harbertrealty.com
407.377.4050

HarbertRealty.com

INDUSTRIAL BUILDING - 1ST FLOOR



INDUSTRIAL BUILDING - 2ND FLOOR



The information contained herein has been obtained from sources deemed reliable, however, HRS makes no guarantees, warranties or representation as to its completeness or accuracy thereof. The presentation of this property is submitted subject to errors, omissions, change of price or conditions, prior to sale or lease or withdrawal without notice.

Damien Madsen
dmadsen@harbertrealty.com
407.256.2844

Josh Smith
jsmith@harbertrealty.com
407.377.4050

View facing South



633 North Orange Avenue
Orlando, FL 32801



321,608 RSF - Total
164,972 RSF - Office
156,636 RSF - Industrial



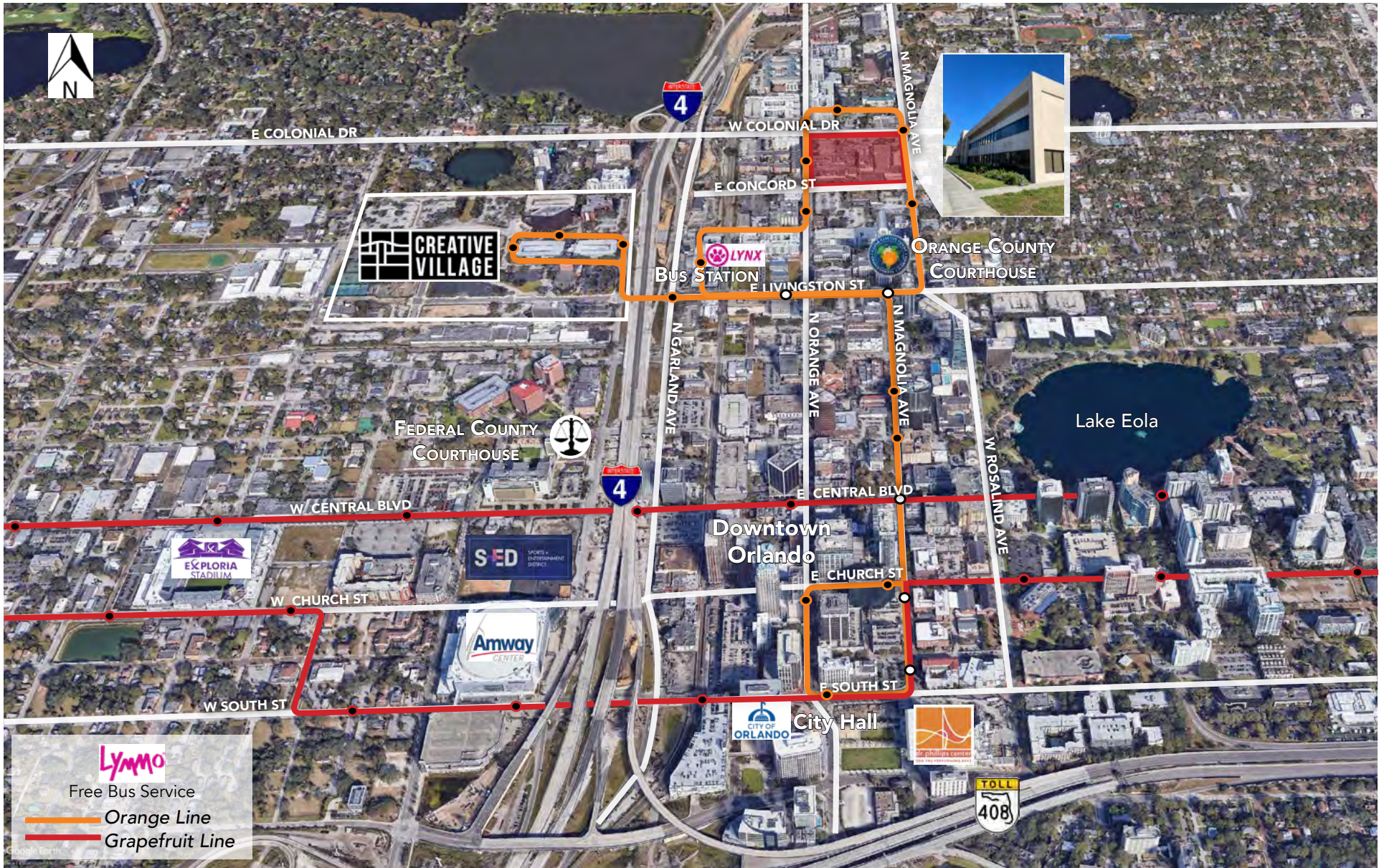
HARBERT
REALTY SERVICES

The information contained herein has been obtained from sources deemed reliable, however, HRS makes no guarantees, warranties or representation as to its completeness or accuracy thereof. The presentation of this property is submitted subject to errors, omissions, change of price or conditions, prior to sale or lease or withdrawal without notice.

Damien Madsen
dmadsen@harbertrealty.com
407.256.2844

Josh Smith
jsmith@harbertrealty.com
407.377.4050

HarbertRealty.com



LYMO
Free Bus Service

- Orange Line
- Grapefruit Line