



±11 ACRE INDUSTRIAL OUTDOOR STORAGE FOR SALE/LEASE

Sales Price:
\$60,000/AC

Quinn Trail
Cowpens, SC

Lease Rate:
Call For Pricing

- Fully Fenced & Graveled
- Electric Gate & Outdoor Lighting
- Can be Subdivided if Needed
- Delivery Expected Q4 2024
- Build-To-Suit Warehouse Options Available
- Located In Upstate Corporate Park



LOCATION
CLOSE PROXIMITY TO
BMW, INLAND PORT
GREER & MAJOR
INTERSTATES



I-85
EXCELLENT
PROXIMITY



ACREAGE
CAN BE
SUBDIVIDED



TRAILER PARKING
200+ TRAILER
PARKING



LEE & ASSOCIATES
COMMERCIAL REAL ESTATE SERVICES

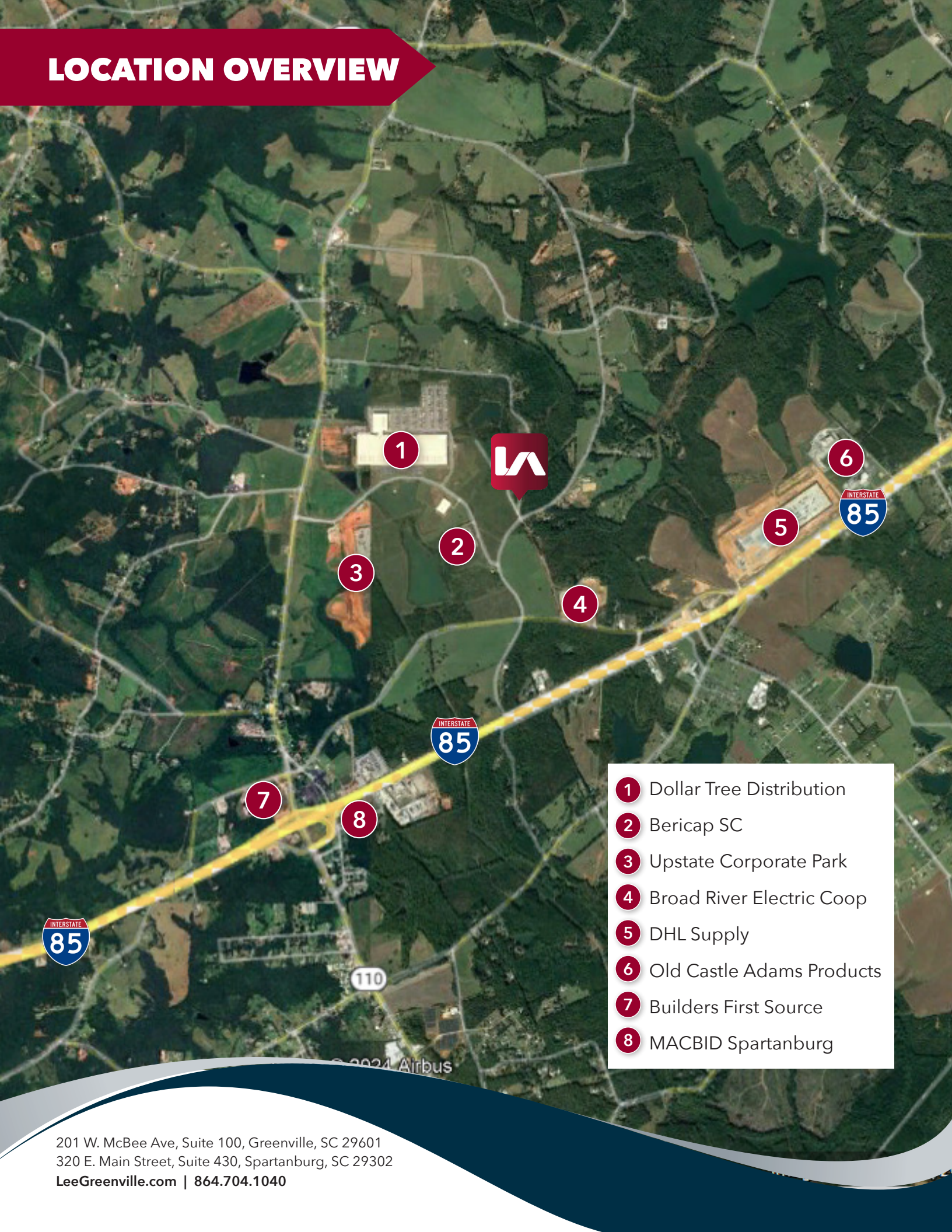
Jordan Skellie, SIOR
EVP/Principal
jskellie@lee-associates.com

Elledge Willis
Associate
ewillis@lee-associates.com

Eric Scardo
Associate
escardo@lee-associates.com

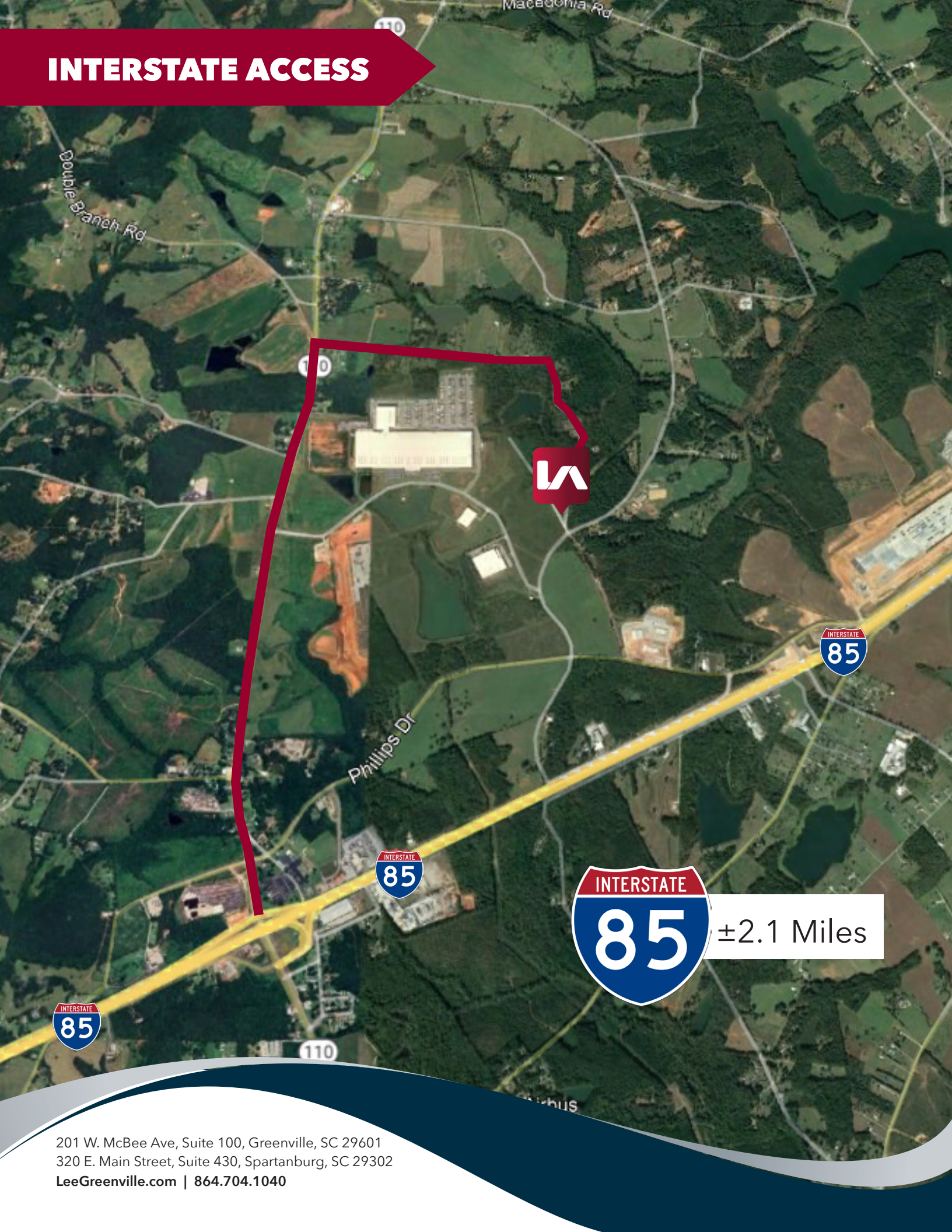
864.704.1040
LeeGreenville.com

LOCATION OVERVIEW



- 1 Dollar Tree Distribution
- 2 Bericap SC
- 3 Upstate Corporate Park
- 4 Broad River Electric Coop
- 5 DHL Supply
- 6 Old Castle Adams Products
- 7 Builders First Source
- 8 MACBID Spartanburg

INTERSTATE ACCESS



±2.1 Miles

201 W. McBee Ave, Suite 100, Greenville, SC 29601
320 E. Main Street, Suite 430, Spartanburg, SC 29302
LeeGreenville.com | 864.704.1040



LEE & ASSOCIATES
COMMERCIAL REAL ESTATE SERVICES

864.704.1040
LeeGreenville.com

GREENVILLE OFFICE
201 W. McBee Ave, Suite 400
Greenville, SC 29601

SPARTANBURG OFFICE
320 E. Main Street, Suite 430
Spartanburg, SC 29302

All information furnished regarding the properties and information in this packet is from sources deemed reliable, but no warranty or representation is made to the accuracy thereof and same is submitted to errors, omissions, change of price, rental or other conditions prior to sale, lease or financing or withdrawal without notice. No liability of any kind is to be imposed on the broker herein.

LEARN MORE GIVE US A CALL



Jordan Skellie, SIOR
EVP/Principal
864.238.2188
jskellie@lee-associates.com



Elledge Willis
Associate
864.230.8377
ewillis@lee-associates.com



Eric Scardo
Associate
864.884.8298
escardo@lee-associates.com