



## **SPACE AVAILABLE:**

Building | 9,026 SF

## **PRICE:**

\$4,000.00 / Month + Utilities



**Charles Reichert**

Commercial Realtor®

**701.223.2450**

[charles@aspengroupprealestate.com](mailto:charles@aspengroupprealestate.com)

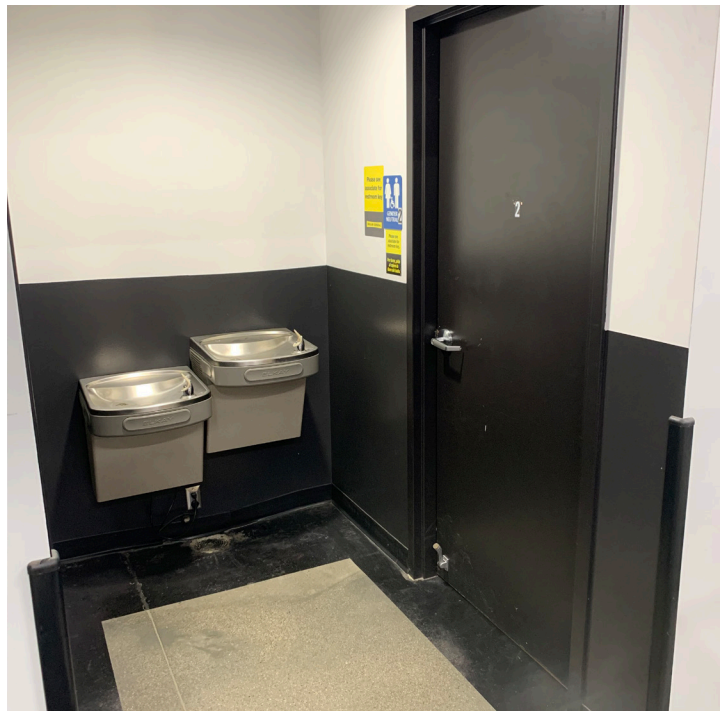
## **HIGHLIGHTS:**

- Glass Front
- Pylon Sign
- Restrooms
- Office
- Warehouse Space
- Parking lot
- Frontage along Highway 25
- 10 minute drive to Milton R. Young Coal Station

**424 S 3rd Street, Suite 2 | Bismarck, ND | [WWW.ASPENGROUPPREALESTATE.COM](http://WWW.ASPENGROUPPREALESTATE.COM)**

This information has been secured from sources we believe to be reliable, but we make no representation or warranties, expressed or implied, as to the accuracy of the information. All references to age, square footage, income and expenses are approximate. Buyers or lessors should conduct their own independent investigations and rely on those results.

## PROPERTY PHOTOS

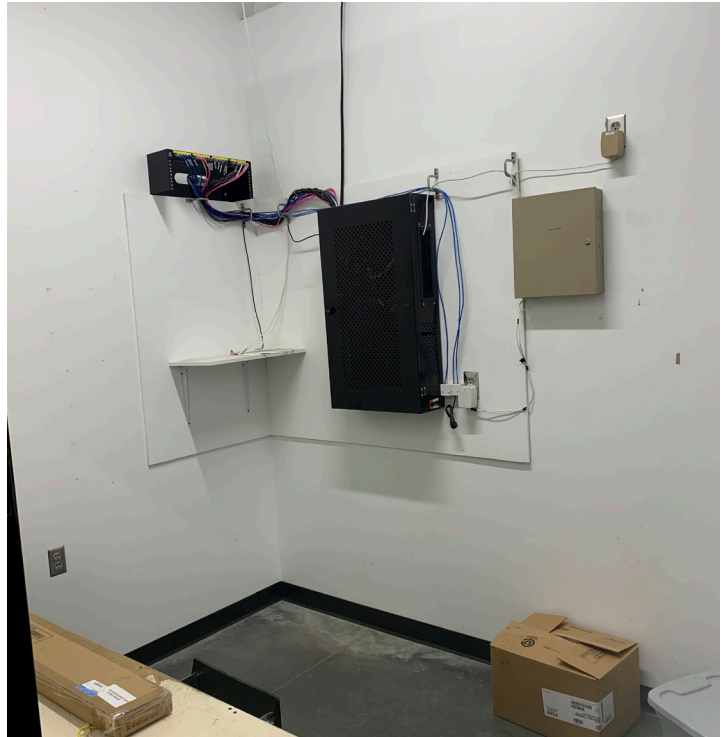


**424 S 3rd Street, Suite 2 | Bismarck, ND | [WWW.ASPENGROUPREALESTATE.COM](http://WWW.ASPENGROUPREALESTATE.COM)**

This information has been secured from sources we believe to be reliable, but we make no representation or warranties, expressed or implied, as to the accuracy of the information. All references to age, square footage, income and expenses are approximate. Buyers or lessors should conduct their own independent investigations and rely on those results.



## PROPERTY PHOTOS



**424 S 3rd Street, Suite 2 | Bismarck, ND | [WWW.ASPENGROUPREALESTATE.COM](http://WWW.ASPENGROUPREALESTATE.COM)**

This information has been secured from sources we believe to be reliable, but we make no representation or warranties, expressed or implied, as to the accuracy of the information. All references to age, square footage, income and expenses are approximate. Buyers or lessors should conduct their own independent investigations and rely on those results.



## PROPERTY PHOTOS



**424 S 3rd Street, Suite 2 | Bismarck, ND | [WWW.ASPENGROUPREALESTATE.COM](http://WWW.ASPENGROUPREALESTATE.COM)**

This information has been secured from sources we believe to be reliable, but we make no representation or warranties, expressed or implied, as to the accuracy of the information. All references to age, square footage, income and expenses are approximate. Buyers or lessors should conduct their own independent investigations and rely on those results.



## LOCATION MAP



**424 S 3rd Street, Suite 2 | Bismarck, ND | [WWW.ASPENGROUPREALESTATE.COM](http://WWW.ASPENGROUPREALESTATE.COM)**

This information has been secured from sources we believe to be reliable, but we make no representation or warranties, expressed or implied, as to the accuracy of the information. All references to age, square footage, income and expenses are approximate. Buyers or lessors should conduct their own independent investigations and rely on those results.