

# 733 N. PASTORIA AVENUE

SUNNYVALE | CALIFORNIA

## ±5,858 Square Feet Available

- ◆ New Interiors Ideal for Office, High-End Manufacturing, Lab, Bio, and Medical Related Uses
- ◆ 60% Drop Ceiling
- ◆ 100% HVAC
- ◆ Approximately 600 Amps @ 220 Volts
- ◆ One (1) Glass Grade Level Roll-Up Door
- ◆ Easy Access to Highway 101 & Downtown Sunnyvale
- ◆ 3.3/1000 Parking/Street Parking
- ◆ Adjacent to 1.3 Million SF Pathline Park
- ◆ Furniture included
- ◆ NNN expenses approx \$0.31
- ◆ Call to tour

**Office/R&D/Manufacturing Space Available**

### CONTACT AGENTS

#### Thomas Sweeney

408.982.8493 ◆ thomas.sweeney@nrmk.com  
CA RE License #00989779

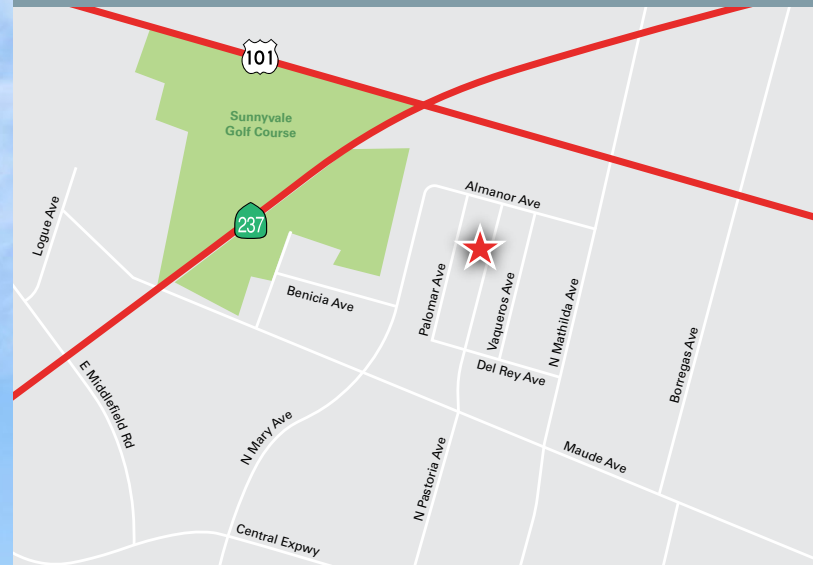
#### Lori Sweeney

408.982.8491 ◆ lori.sweeney@nrmk.com  
CA RE License #01204105

#### Derek Yep

408.987.4106 ◆ derek.yep@nrmk.com  
CA RE License #01476099

### LOCATION MAP



**CALL FOR PRICING AND TOURING INSTRUCTIONS**

**TAKE OUR VIRTUAL TOUR!**



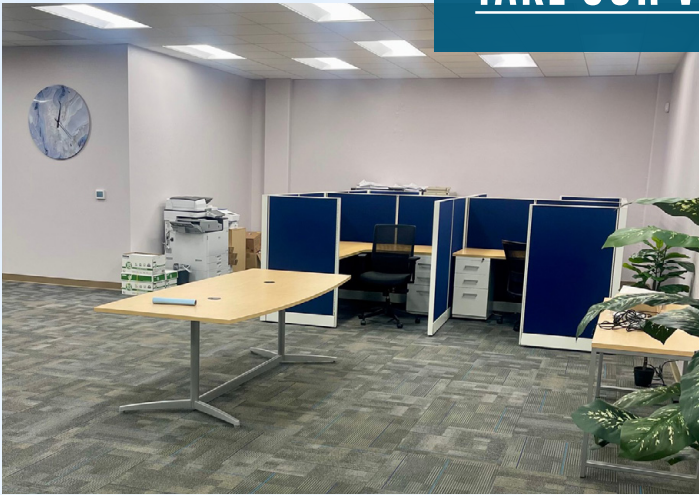


# 733 NORTH PASTORIA AVENUE

## Premises Photos

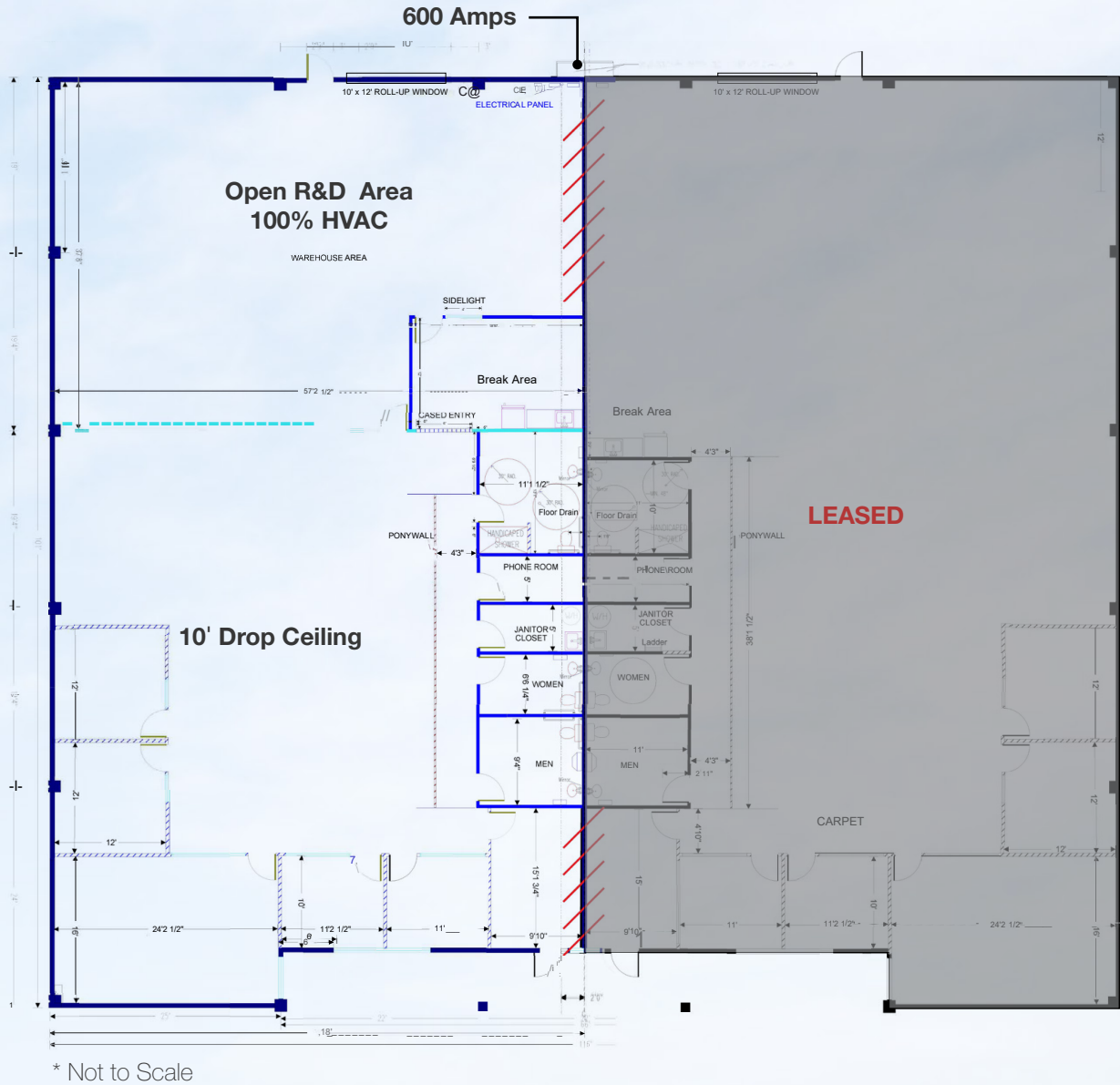


[TAKE OUR VIRTUAL TOUR!](#)



# 733 NORTH PASTORIA AVENUE

## Premises Floorplan



**TAKE OUR VIRTUAL TOUR!**