

South Tampa Retail Unit for Lease

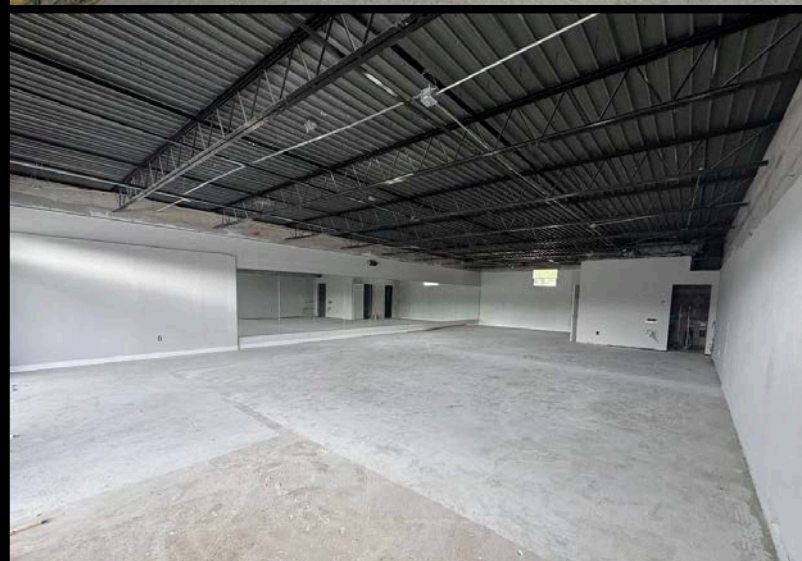
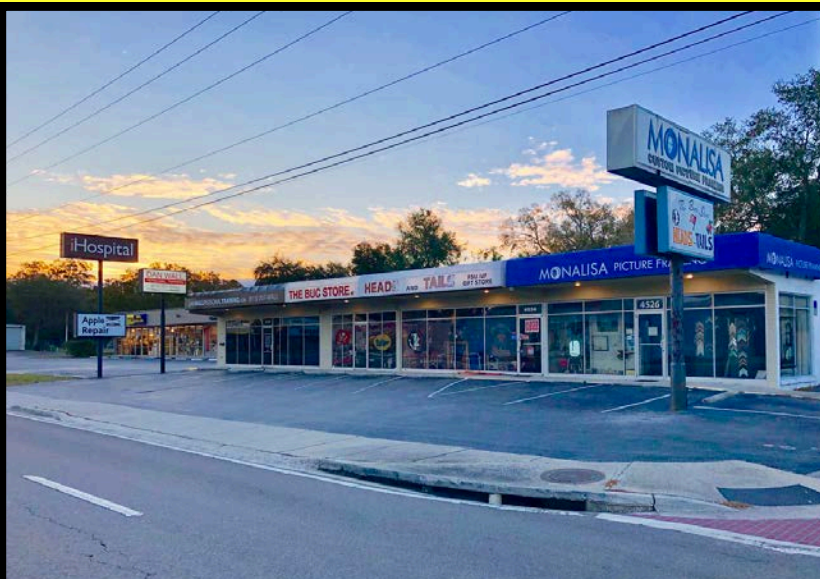
4520 W Kennedy Blvd, Tampa, FL 33609

**Retail Space for Lease | High Traffic | Great Visibility | Parking
1,976 SF | Vanilla Shell**

Retail Space located at 4520 W Kennedy Blvd in South Tampa. This space is located in a shopping center that includes Heads and Tails, Monalisa Custom Framing, UPS Store, The Floridian and PopUp Bagles on on Kennedy Blvd with excellent visibility, access, pylon and building signage and parking. The space is Vanilla Shell and is essentially Move In Ready, Available Now. The unit dimensions is 31 ft wide by 60 ft deep with an existing built out restroom.

Ideal Uses: General Retail, Beauty Services and Other Commercial Uses

(No Smoke Shops, Fitness Uses, Medical Uses, or Sit Down Restaurant Concepts)



Jeff Dervech

Mobile: 813-766-9639

jdervech@dervechre.com

Google Maps

