

# SWAN LAKE FLEX

FOR LEASE



## PROPERTY DETAILS

1660 W GORDON AVE, LAYTON, UT 84041

### For Lease

- \$1.25 PSF NNN
- Clear Height - 12'-14'
- M-2 Zoning
- Power: 3 phase power - 208 volt
- Parking: Approx. 2.5/1000
- Close proximity to I -15
- Great visibility on Gordon Ave



**MOUNTAIN WEST**  
COMMERCIAL REAL ESTATE

### RAND SARGENT

rsargent@mwcre.com  
direct 801.989.1600  
[View Profile](#)

### ASHLEY ALLRED

aallred@mwcre.com  
direct 801.309.6889  
[View Profile](#)

**FULL SERVICE  
COMMERCIAL REAL ESTATE**  
1755 East 1450 South  
Clearfield, UT 84015  
Office 801.456.8800  
[www.mwcre.com](http://www.mwcre.com)

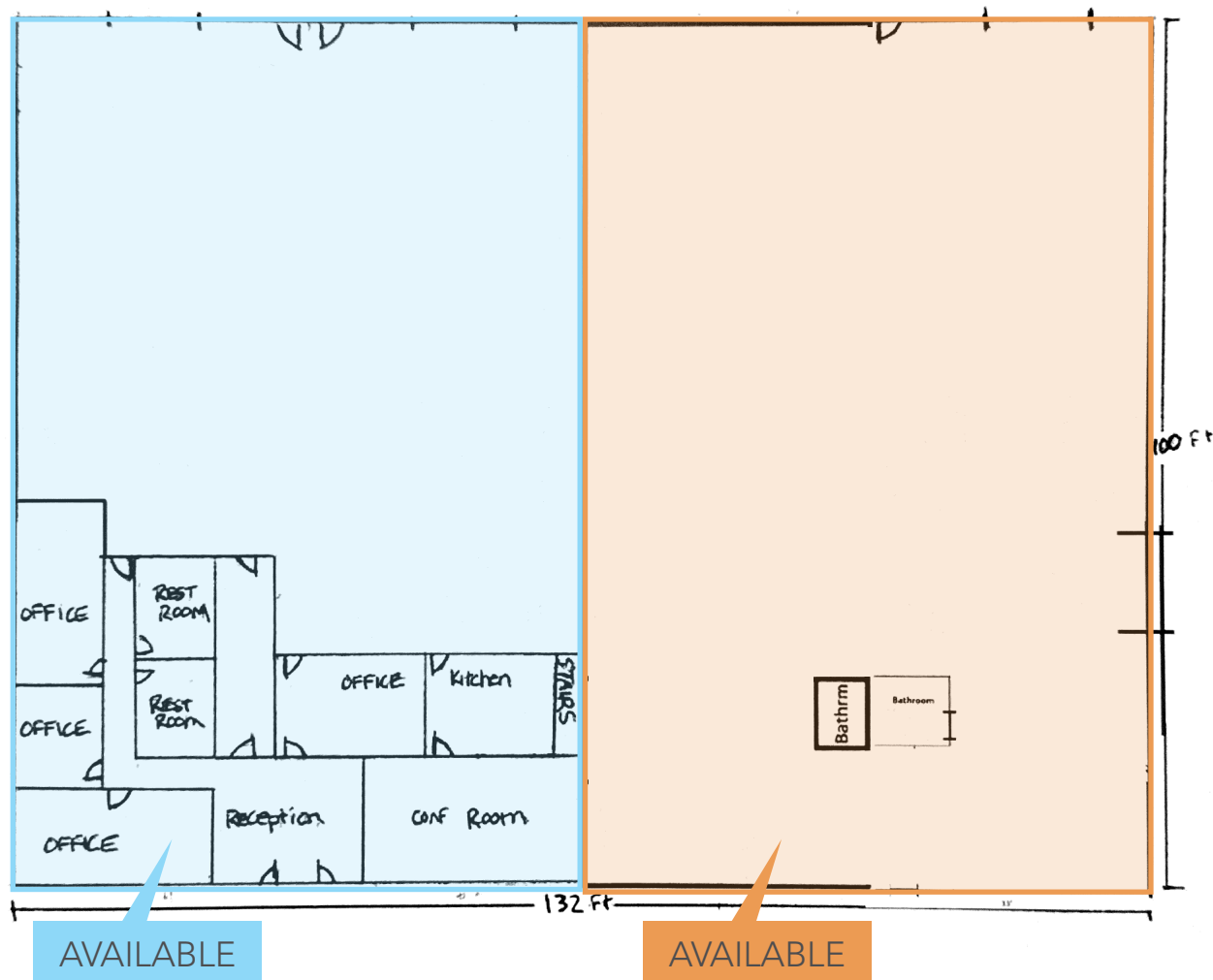
## FLOOR PLAN

### Suite 3 & 4

- 1,982 SF office
  - » 4 offices
  - » Large conference room
  - » Full kitchen/breakroom
  - » M/W restrooms
- 4,618 SF warehouse
- Two Overhead Doors (12'x12')

### Suite 1 & 2

- 6,600 SF
- 2 Bathrooms
- Full Warehouse
- Two Overhead Doors (12'x12')
- One Dock High Door



**MOUNTAIN WEST**  
COMMERCIAL REAL ESTATE

### RAND SARGENT

rsargent@mwcre.com  
direct 801.989.1600  
[View Profile](#)

### ASHLEY ALLRED

aallred@mwcre.com  
direct 801.309.6889  
[View Profile](#)

**FULL SERVICE  
COMMERCIAL REAL ESTATE**  
1755 East 1450 South  
Clearfield, UT 84015  
Office 801.456.8800  
[www.mwcre.com](http://www.mwcre.com)



# SWAN LAKE FLEX

## UNIT 1 & 2



**MOUNTAIN WEST**  
COMMERCIAL REAL ESTATE

### RAND SARGENT

rsargent@mwcre.com  
direct 801.989.1600  
[View Profile](#)

### ASHLEY ALLRED

aallred@mwcre.com  
direct 801.309.6889  
[View Profile](#)



**FULL SERVICE**  
**COMMERCIAL REAL ESTATE**  
1755 East 1450 South  
Clearfield, UT 84015  
Office 801.456.8800  
[www.mwcre.com](http://www.mwcre.com)



# SWAN LAKE FLEX

## UNIT 3 & 4



**MOUNTAIN WEST**  
COMMERCIAL REAL ESTATE

**RAND SARGENT**

rsargent@mwcre.com

direct 801.989.1600

[View Profile](#)

**ASHLEY ALLRED**

aallred@mwcre.com

direct 801.309.6889

[View Profile](#)



**FULL SERVICE  
COMMERCIAL REAL ESTATE**

1755 East 1450 South

Clearfield, UT 84015

Office 801.456.8800

[www.mwcre.com](http://www.mwcre.com)





## RAND SARGENT

rsargent@mwcre.com  
direct 801.989.1600

[View Profile](#)

## ASHLEY ALLRED

aallred@mwcre.com  
direct 801.309.6889

[View Profile](#)

**FULL SERVICE  
COMMERCIAL REAL ESTATE**

312 East South Temple  
Salt Lake City, UT 84111

Office 801.456.8800

[www.mwcre.com](http://www.mwcre.com)