

FOR LEASE

4,587 SF AVAILABLE

TECHNIPLEX BUSINESS CENTER

16203 PARK ROW DRIVE ▪ SUITE 185 ▪ HOUSTON, TX 77084



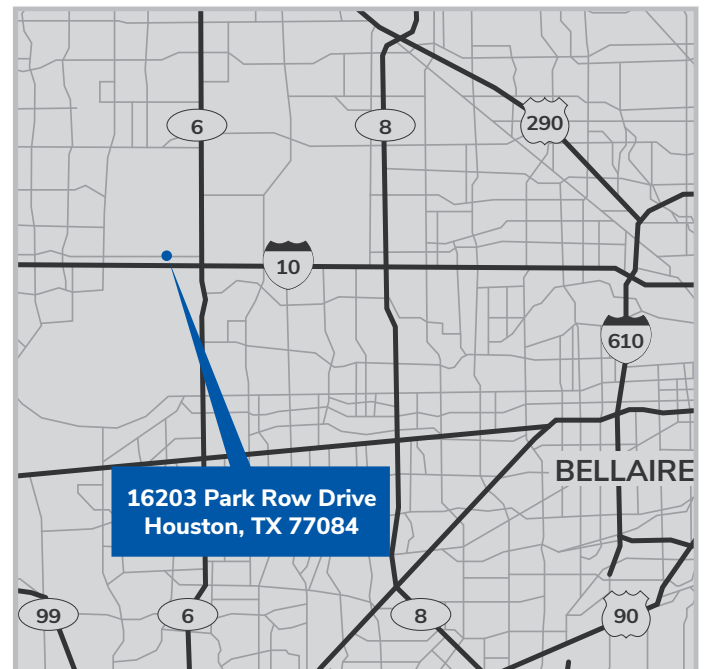
16203 PARK ROW

BUILDING FEATURES

- Located in the heart of the Energy Corridor immediately off of Interstate 10 with convenient access to major thoroughfares:
 - Hwy. 6 – 1.3 miles
 - Beltway 8 – 6.5 miles
 - Grand Pkwy 99 – 7.0 miles
- Corporate appeal in a business park setting with a variety of offerings, including, flex, distribution, and lab type spaces.
- 55,421 SF total building size | Rear-load | Grade Level loading

SUITE FEATURES

- 4,587 SF total
 - 3,970 SF office
 - 617 SF warehouse
- 12' clear height
- 1 grade level doors



For leasing information, please contact Stream Realty Partners

WILLIAM CARPENTER | 713.300.8891 | william.carpenter@streamrealty.com

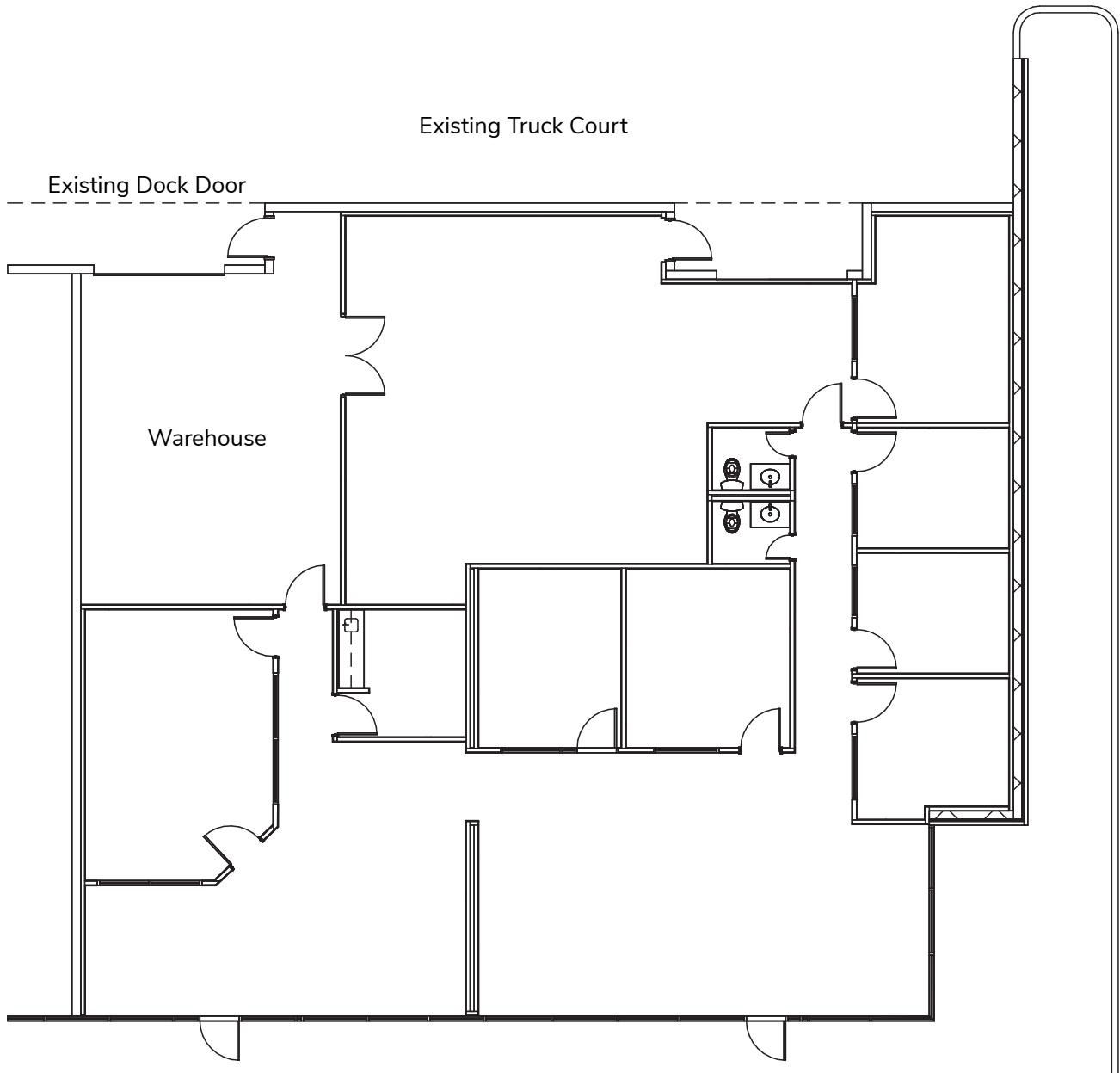
MEG ZSCHAPPEL | 713.300.0284 | meg.zschappel@streamrealty.com

FOR LEASE

4,587 SF AVAILABLE

TECHNIPLEX BUSINESS CENTER

16203 PARK ROW DRIVE ▪ SUITE 185 ▪ HOUSTON, TX 77084



For leasing information, please contact Stream Realty Partners
WILLIAM CARPENTER | 713.300.8891 | william.carpenter@streamrealty.com
MEG ZSCHAPPEL | 713.300.0284 | meg.zschappel@streamrealty.com