

110 N. CLINTON AVE.
LINDENHURST, NY



Exclusive For Lease
2,250 sq. ft.

Monthly Lease: \$3,190/mo.



Location: 110 N. Clinton Ave., Lindenhurst (adj. to Lindenhurst train station)
Size: 2,250 sq. ft. (unit measures approx. 75' x 30')
Office: approximately 450 sq ft
Ceiling: 15 ft.
Loading: One (1) 12 ft. overhead door
Utilities: Meter (electric), Oil Heat, One bath
Uses: NO AUTO RELATED, Light industrial, warehouse storage. Excellent for contractor (electrical, plumbing, home/commercial services)
Lease: \$3,190/month (\$17.00 sq ft)



Great Space for:

- ◆ **Contractor**
- ◆ **Warehouse Storage**
- ◆ **Light Industrial uses**



George Hubner, Managing Director
Office: 631-360-2290 • Cell: 516-901-2248
ghubner@CorporateCommercialRE.com
www.CorporateCommercialRealty.com

SALES ❖ TENANT REPRESENTATION ❖ LEASING

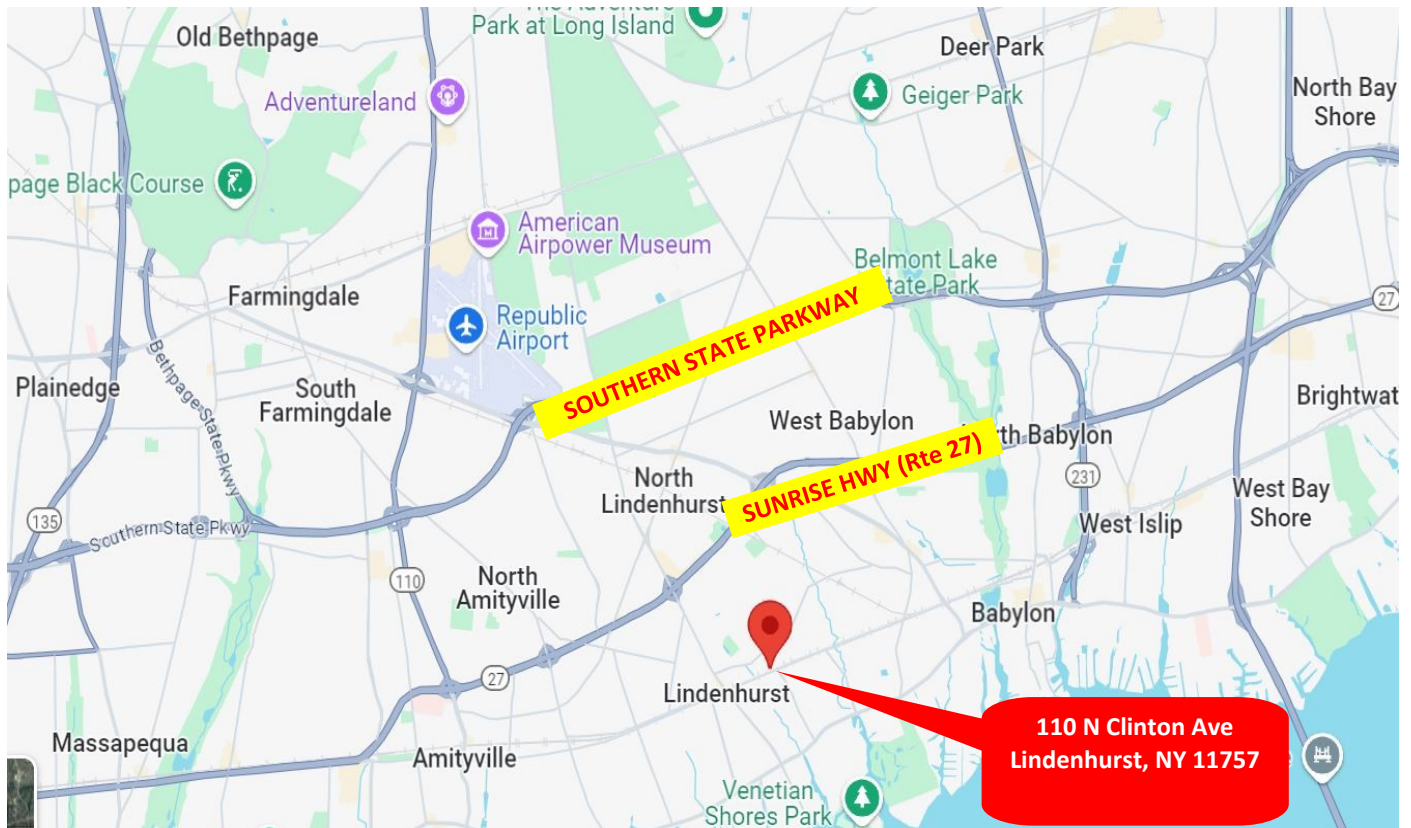
Information herein is believed correct but is not warranted. Purchaser is strongly encouraged to verify the accuracy of all material information contained in this listing sheet. This verification should include all information for Purchaser's intended use of the property for any particular purpose. All information contained herein are representations from many sources including the seller/owner. The broker has undertaken no independent investigation to verify the accuracy of the information provided. Images, content and design Copyrighted CCR 2008-2023

110 N. CLINTON AVE.
LINDENHURST, NY



Exclusive For Lease
2,250 sq ft

Monthly Lease: \$3,190/mo.

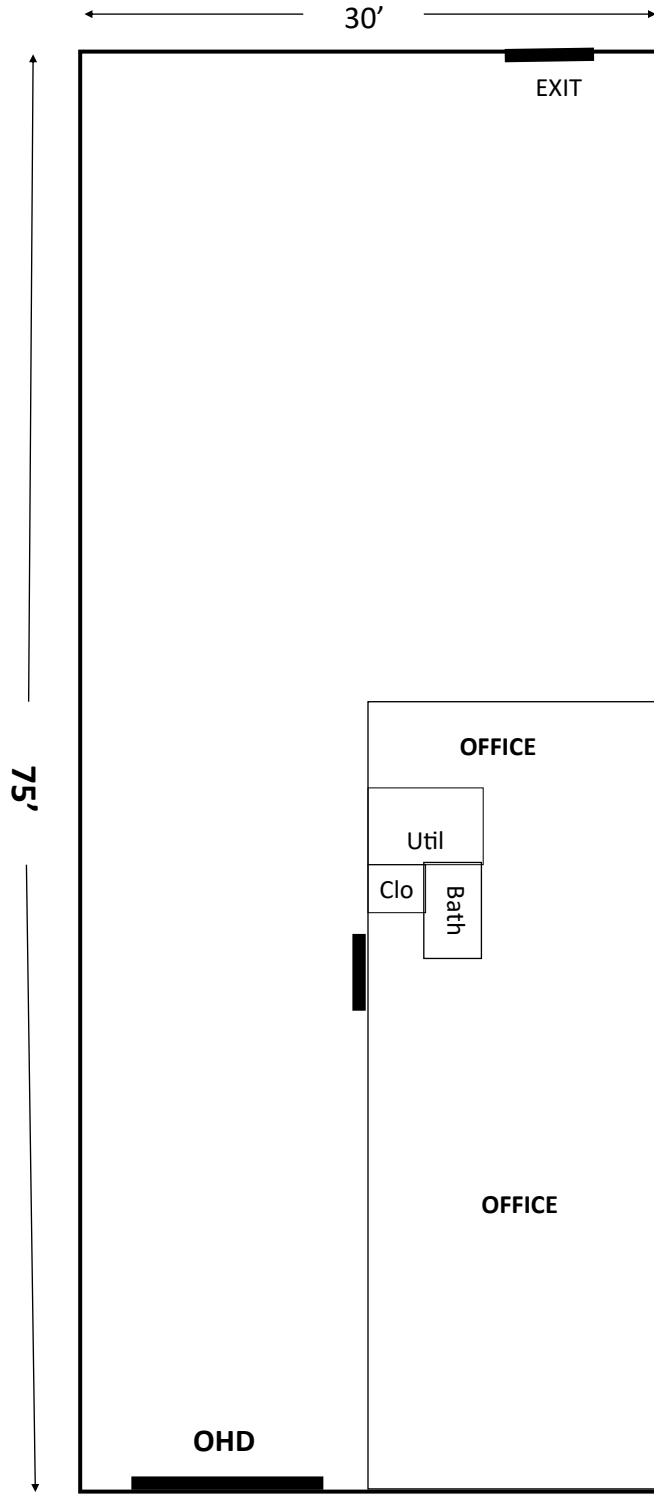


George Hubner, Managing Director
Office: 631-360-2290 • Cell: 516-901-2248
ghubner@CorporateCommercialRE.com
www.CorporateCommercialRealty.com

SALES ❖ TENANT REPRESENTATION ❖ LEASING

Information herein is believed correct but is not warranted. Purchaser is strongly encouraged to verify the accuracy of all material information contained in this listing sheet. This verification should include all information for Purchaser's intended use of the property for any particular purpose. All information contained herein are representations from many sources including the seller/owner. The broker has undertaken no independent investigation to verify the accuracy of the information provided. Images, content and design Copyrighted CCR 2008-2023

110 N. Clinton Ave., Lindenhurst, NY
Unit "C" (approx. 2,250 sq ft)



Not to Scale
All Measurements
Approximate
For Layout/Planning
Purposes Only

North Clinton Avenue

