

# 2901 Lakeview Road Lawrence, Kansas

Office Space for Lease



# 2901 Lakeview Road

## Available Space

Up to 24,000 SF

## Lease Rate

\$9.50/SF, Full Service

2901 Lakeview Road is a two-story office building, home to Lawrence Paper Company, within a bustling industrial park just north of I-70, with easy access to Highway 24/40 and K-10. There are three suites available ranging from 3,100-12,000 SF. The suites are comprised of open areas, conference rooms, private offices, and break rooms. The second floor is accessible via stairs or an elevator. The site has excellent parking and is located on the city bus route.

These office spaces boast the advantage of being nestled within a vibrant hub of commerce, presenting an optimal setting for a call center, back office, data center, or a variety of other uses. Don't miss this chance to secure your space at these competitive full-service lease rates!

115,080 SF  
Building Size

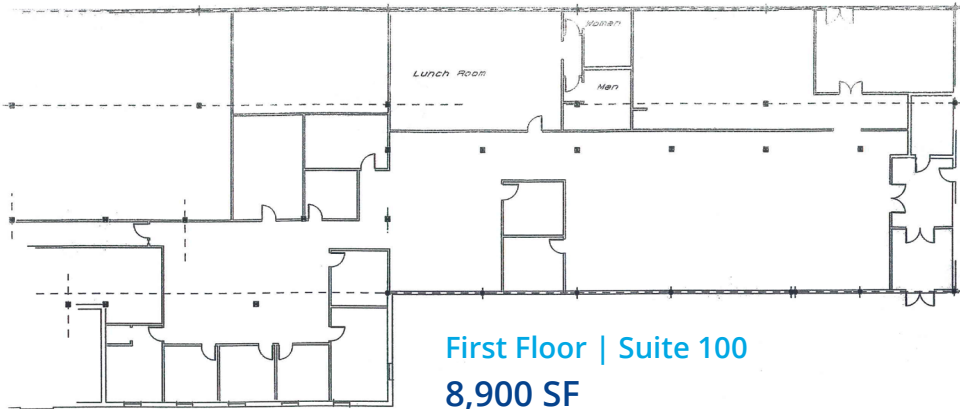
1973  
Year Built

548,856 SF  
Lot Size

IG  
Zoning



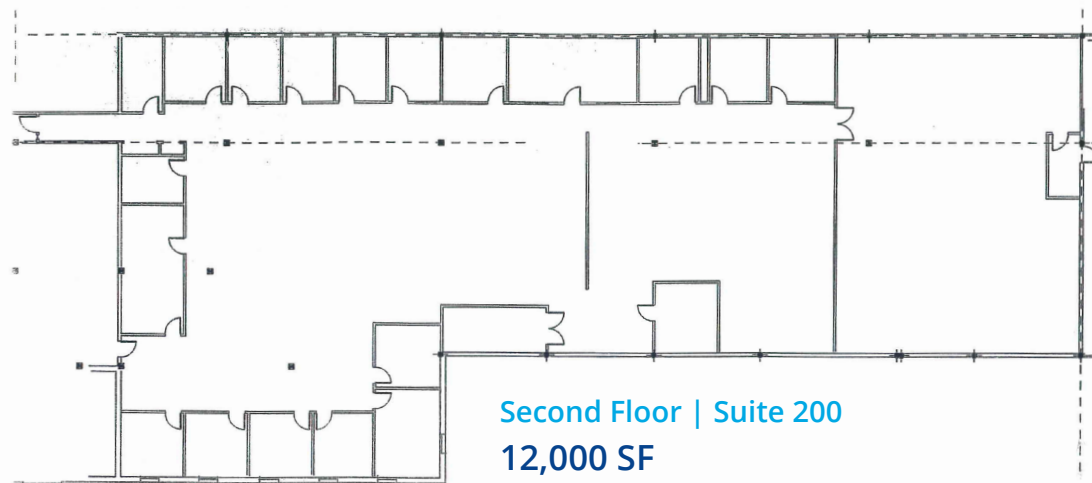
# Floor Plans



**First Floor | Suite 100**

**8,900 SF**

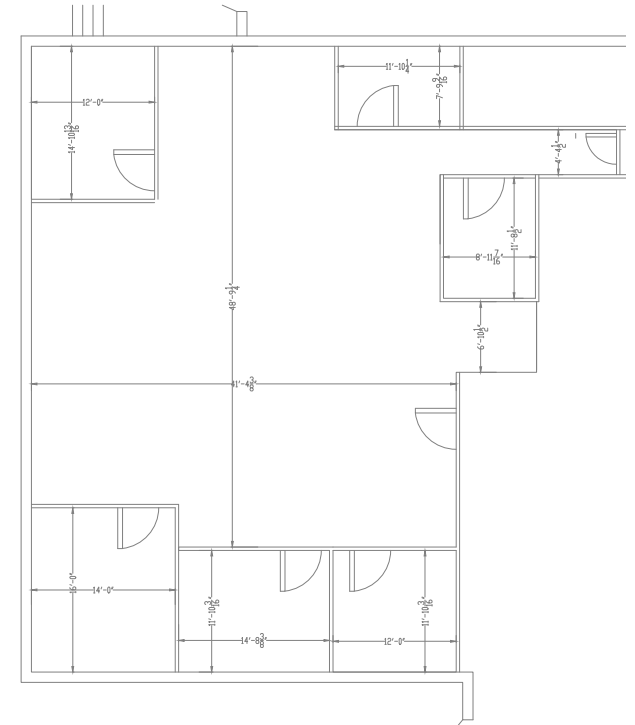
\$7,045.83/month, full service  
(excluding suite janitorial)



**Second Floor | Suite 200**

**12,000 SF**

\$9,500.00/month, full service  
(excluding suite janitorial)

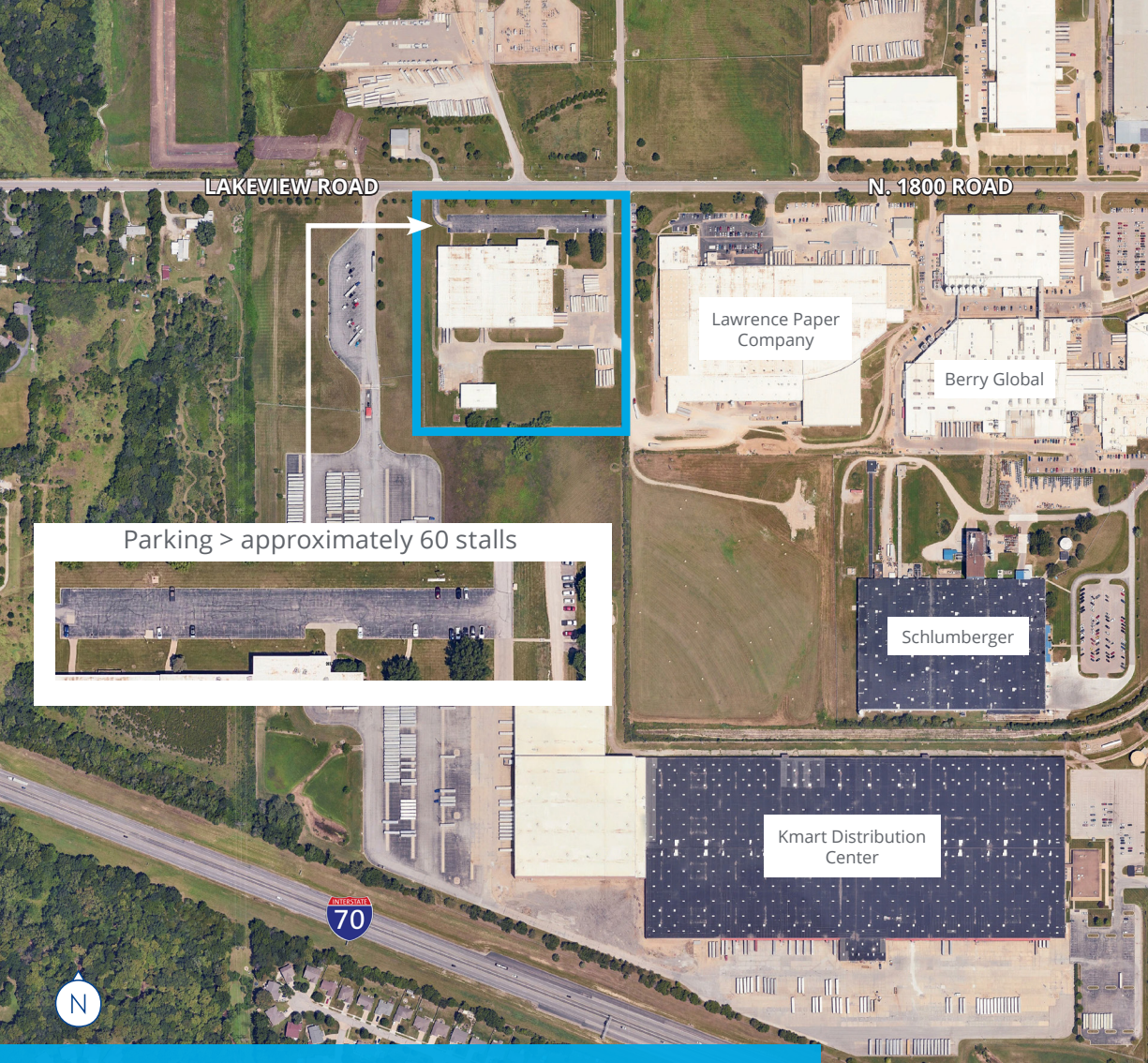


**Second Floor | Suite 201**

**3,100 SF**

\$2,454.17/month, full service  
(excluding suite janitorial)





**For Lease** | 2901 Lakeview Road, Lawrence, Kansas



**Allison Vance Moore, SIOR**  
Senior Vice President | Lawrence  
+1 785 865 3924  
allison.moore@colliers.com

