

FOR SALE

BRIDGEWATER VILLAGE



TRANSWESTERN
REAL ESTATE
SERVICES

STILLWATER AREA
HIGH SCHOOL
2,760 STUDENTS



WASHINGTON
FAIR GROUNDS



LAKE ELMO
ELEMENTARY
SCHOOL
717 STUDENTS

LAKE ELMO
AIRPORT

STILLWATER BLVD

MANNING AVE N



SKYVIEW
MIDDLE SCHOOL
729 STUDENTS



PROPERTY SUMMARY

LOCATION: NWC of Stillwater Blvd & Manning Ave
Lake Elmo, MN 55042

DELIVERY DATE: May 2025

ZONING: Allows retail, medical or office uses

PAD DELIVERY: Utilities to property line, ponding, access roads complete, rough graded and internal roads completed as part of the purchase price.

AVAILABILITY

LOT 1 | BLOCK 1: 1.65 acres - \$1,724,976 (\$24 psf)

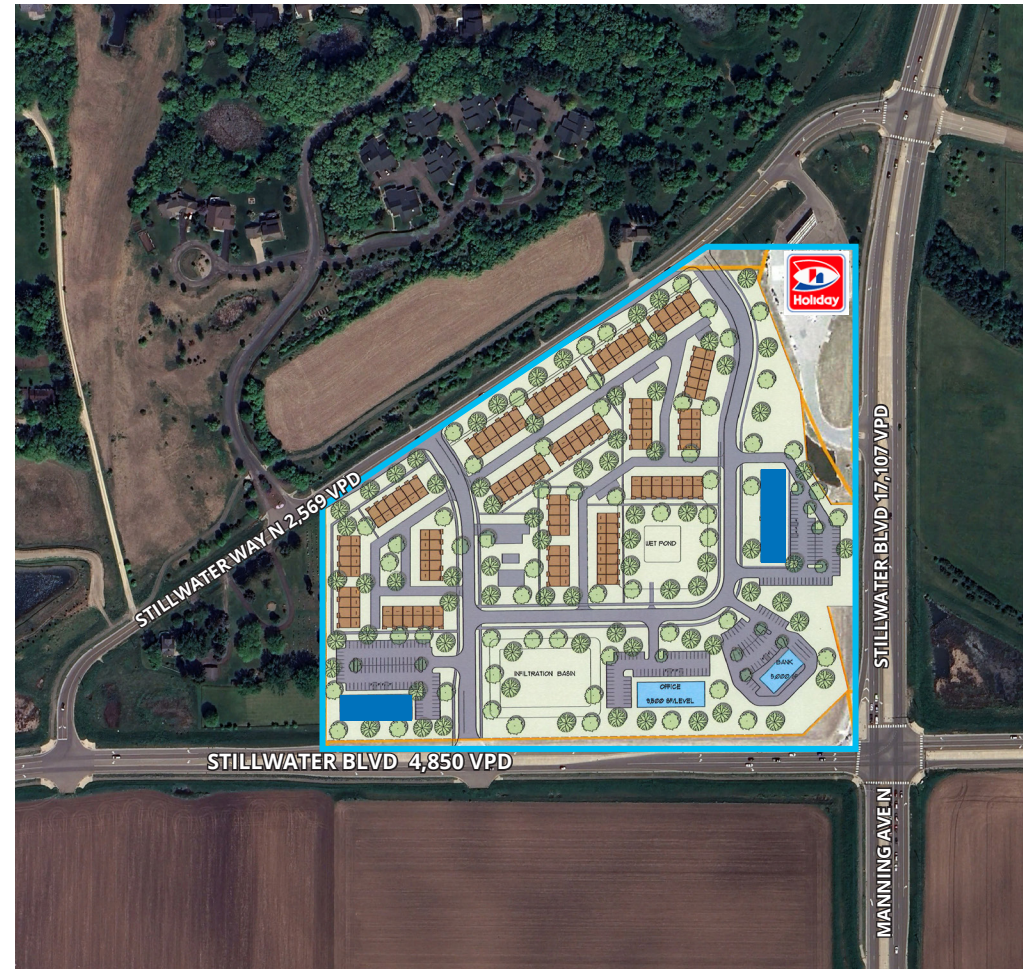
LOT 1 | BLOCK 3: 1.63 acres - Under Contract

LOT 2 | BLOCK 3: 1.82 acres - Sold (Bridgewater Bank)

LOT 3 | BLOCK 3: 1.90 acres - \$1,986,336 (\$24 psf)

HIGHLIGHTS

- The outlots are zoned for medium density housing
- Individual monument sign for each lot



for information
CONTACT

Russ Crawford • 612 741 4800 • russ.crawford@transwestern.com
Chris Simmons • 612 359 1675 • chris.simmons@transwestern.com
Patrick Crawford • 612 615 1244 • patrick.crawford@transwestern.com

TRANSWESTERN REAL ESTATE SERVICES

SITE PLAN



for information
CONTACT

Russ Crawford • 612 741 4800 • russ.crawford@transwestern.com
Chris Simmons • 612 359 1675 • chris.simmons@transwestern.com
Patrick Crawford • 612 615 1244 • patrick.crawford@transwestern.com

TW TRANSWESTERN REAL ESTATE SERVICES