

Chesterfield Parkway I

16100 Chesterfield Parkway W, Chesterfield, MO 63017



For More Information, Contact:

Jim Loft, CCIM, SIOR | 314-696-1400
jloft@gershmancre.com

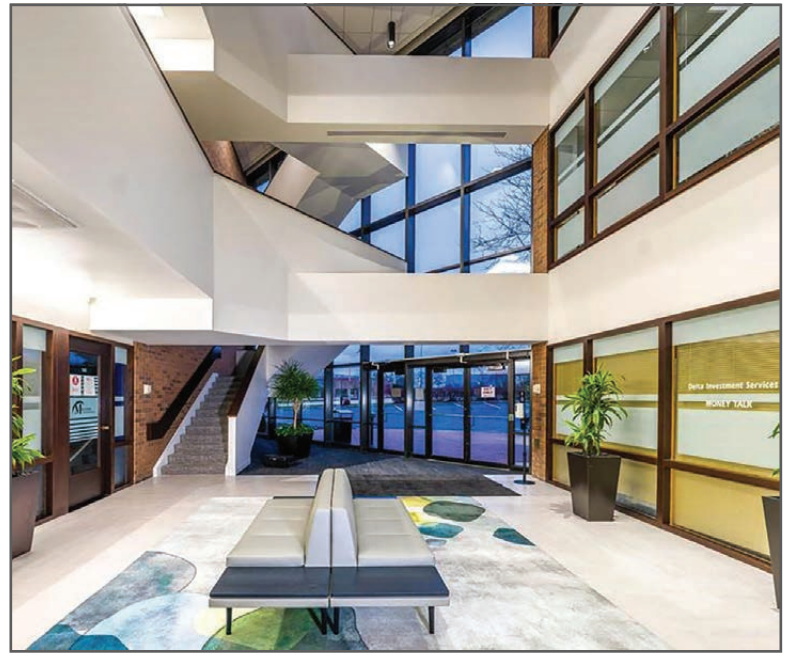
Dan Freeland, CCIM, SIOR | 314-889-0605
dfreeland@gershmancre.com

Fallon Chambers | 314-746-1425
fchambers@gershmancre.com



439 SF - 1,961 SF Available For Lease

- New Renovated Lobby & Common Areas
- Building Equipped with Conference Room
- Easy Access to I-64/Hwy 40
- Lease Rate: \$23.50/RSF, Full Service

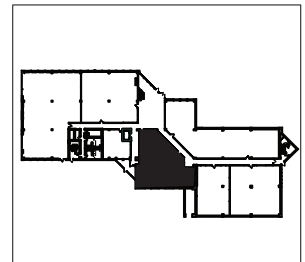
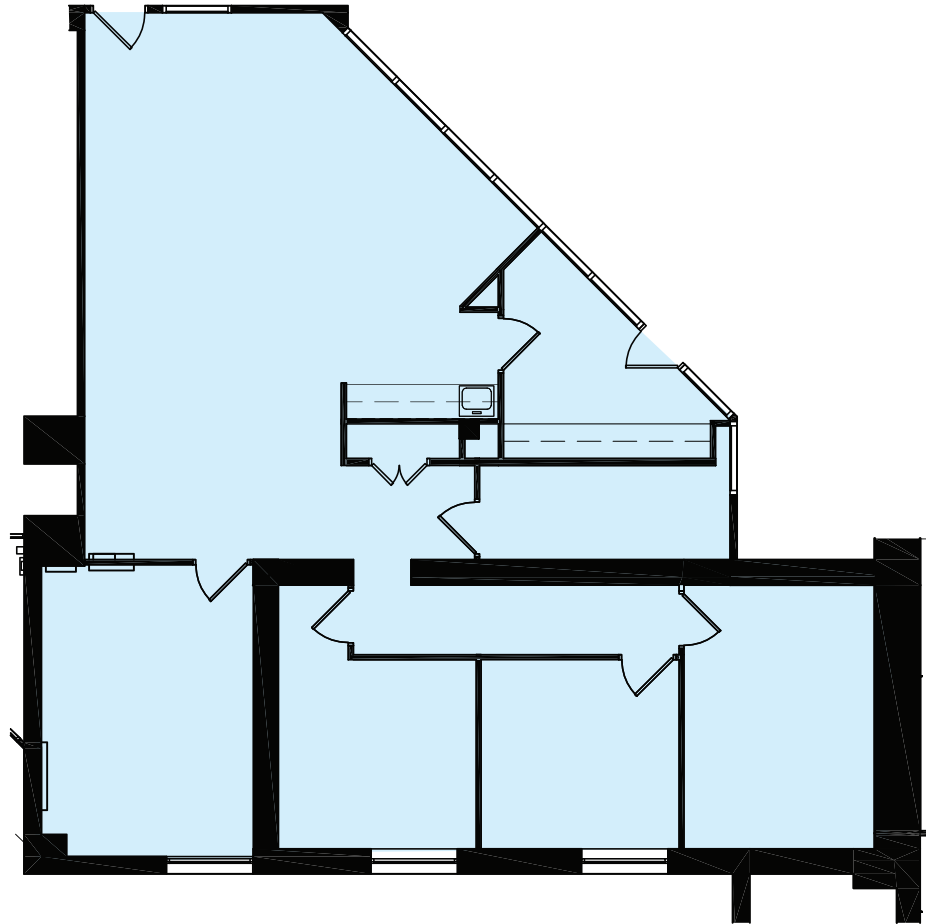


Chesterfield Parkway I

16100 CHESTERFIELD PARKWAY W, CHESTERFIELD, MO 63017



SUITE 145: 1,961 SF

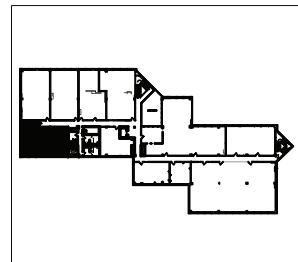
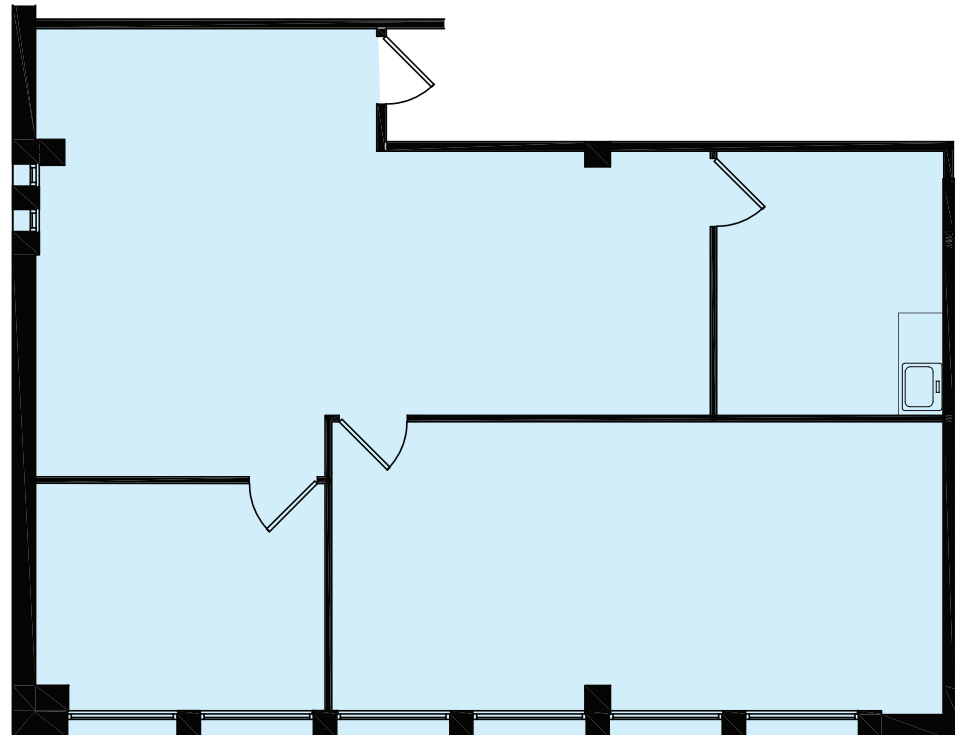


Chesterfield Parkway I

16100 CHESTERFIELD PARKWAY W, CHESTERFIELD, MO 63017



SUITE 200: 1,336 SF

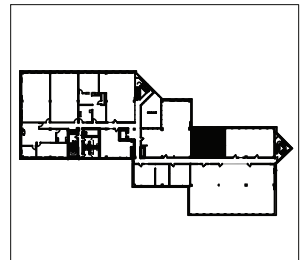
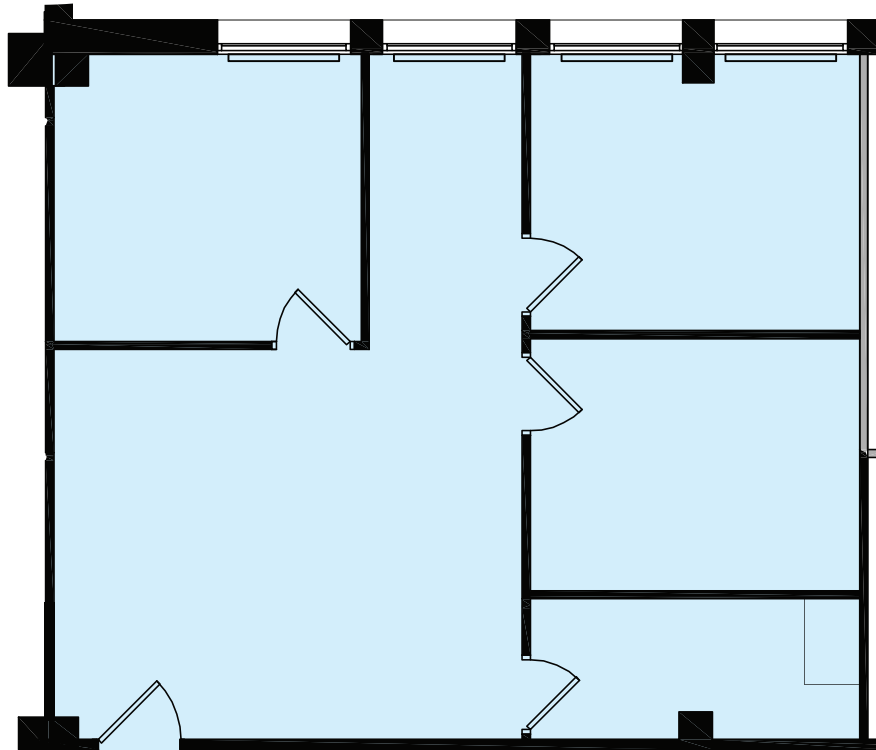


Chesterfield Parkway I

16100 CHESTERFIELD PARKWAY W, CHESTERFIELD, MO 63017

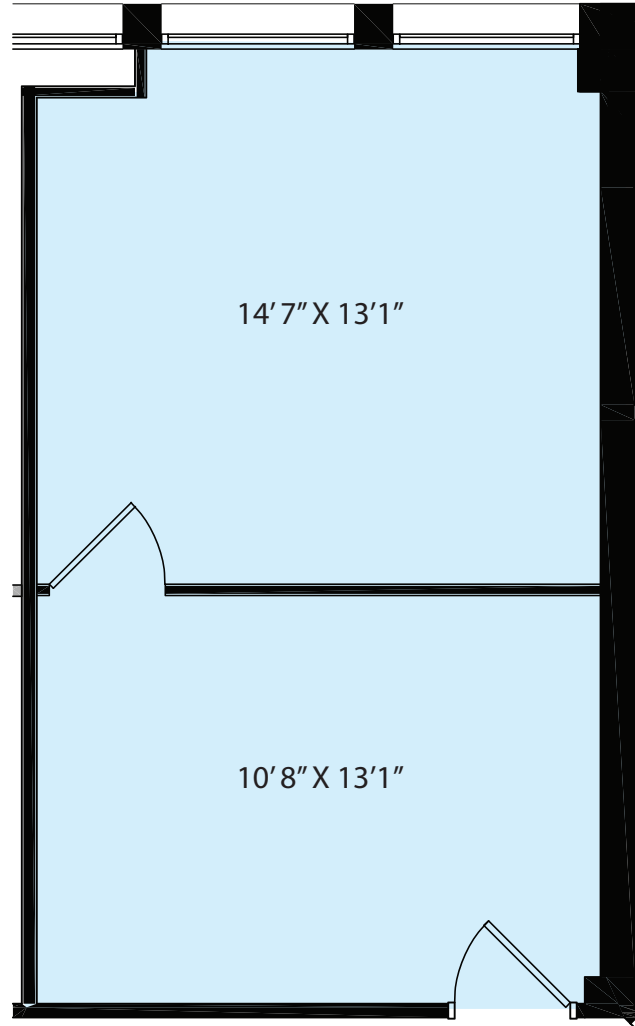


SUITE 248: 848 SF



Chesterfield Parkway I

16100 CHESTERFIELD PARKWAY W, CHESTERFIELD, MO 63017



SUITE 365: 439 SF

Available 4/1/26

