

2005 KINGS HIGHWAY

Swedesboro, NJ 08085

 FOR SALE

 OFFICE

 2,700 SF



PROPERTY DESCRIPTION

Medical/Dental Office for sale

- 4 existing exam rooms
- 20+ parking spaces on-site
- Signage at the main intersection with Center Square Road
- 2 billboards (income generating)
- Great location- minutes to I-295 N/S

SALE PRICE:

\$499,900

FOR MORE INFORMATION


Joe Riggs

 609.352.1162

 joe.riggs@naimertz.com

NAI MERTZ DISCLAIMER: NO WARRANTY OR REPRESENTATION, EXPRESS OR IMPLIED, IS MADE AS TO THE ACCURACY OF THE INFORMATION CONTAINED HEREIN, AND THE SAME IS SUBMITTED SUBJECT TO ERRORS, OMISSIONS, CHANGE OF PRICE, RENTAL OR OTHER CONDITIONS, PRIOR SALE, LEASE OR FINANCING, OR WITHDRAWAL WITHOUT NOTICE, AND OF ANY SPECIAL LISTING CONDITIONS IMPOSED BY OUR PRINCIPALS NO WARRANTIES OR REPRESENTATIONS ARE MADE AS TO THE CONDITION OF THE PROPERTY OR ANY HAZARDS CONTAINED THEREIN ARE ANY TO BE IMPLIED. OUTLINES ARE APPROXIMATE AND SHOWN ONLY TO IDENTIFY THE PARCEL IN CONSIDERATION.

NAI Mertz

 NAI Mertz | 21 Roland Avenue
Mount Laurel, NJ 08054
856.234.9600 | naimertz.com



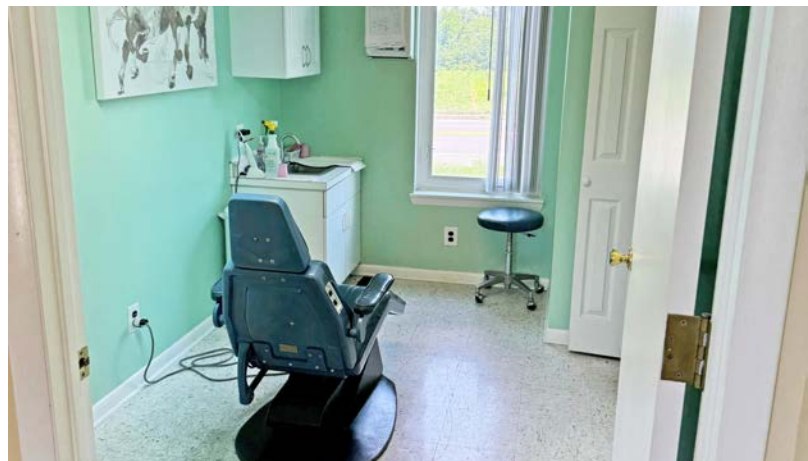
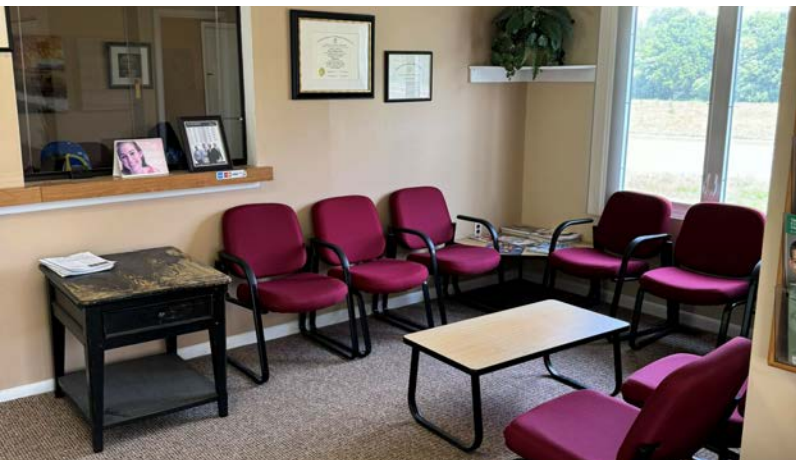
2005 KINGS HIGHWAY

Swedesboro, NJ 08085

 FOR SALE

 OFFICE

 2,700 SF



FOR MORE INFORMATION


Joe Riggs

 609.352.1162

 joe.riggs@naimertz.com

NAI MERTZ DISCLAIMER: NO WARRANTY OR REPRESENTATION, EXPRESS OR IMPLIED, IS MADE AS TO THE ACCURACY OF THE INFORMATION CONTAINED HEREIN, AND THE SAME IS SUBMITTED SUBJECT TO ERRORS, OMISSIONS, CHANGE OF PRICE, RENTAL OR OTHER CONDITIONS, PRIOR SALE, LEASE OR FINANCING, OR WITHDRAWAL WITHOUT NOTICE, AND OF ANY SPECIAL LISTING CONDITIONS IMPOSED BY OUR PRINCIPALS NO WARRANTIES OR REPRESENTATIONS ARE MADE AS TO THE CONDITION OF THE PROPERTY OR ANY HAZARDS CONTAINED THEREIN ARE ANY TO BE IMPLIED. OUTLINES ARE APPROXIMATE AND SHOWN ONLY TO IDENTIFY THE PARCEL IN CONSIDERATION.

NAI Mertz

 **NAI Mertz** | 21 Roland Avenue
Mount Laurel, NJ 08054
856.234.9600 | naimertz.com



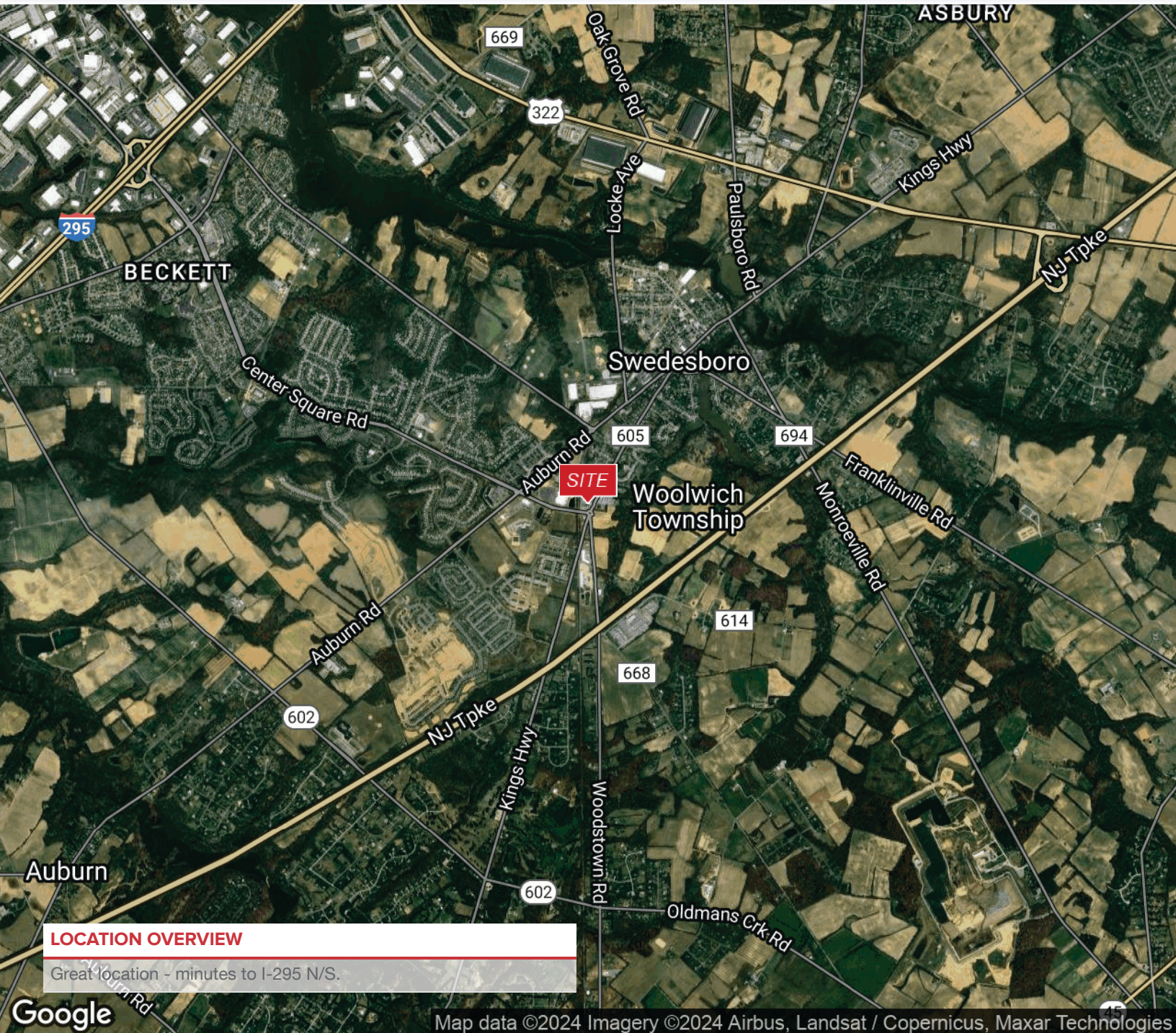
2005 KINGS HIGHWAY

Swedesboro, NJ 08085

 FOR SALE

 OFFICE

 2,700 SF



LOCATION OVERVIEW

Great location - minutes to I-295 N/S.

FOR MORE INFORMATION


Joe Riggs

 609.352.1162

 joe.riggs@naimertz.com

NAI MERTZ DISCLAIMER: NO WARRANTY OR REPRESENTATION, EXPRESS OR IMPLIED, IS MADE AS TO THE ACCURACY OF THE INFORMATION CONTAINED HEREIN, AND THE SAME IS SUBMITTED SUBJECT TO ERRORS, OMISSIONS, CHANGE OF PRICE, RENTAL OR OTHER CONDITIONS, PRIOR SALE, LEASE OR FINANCING, OR WITHDRAWAL WITHOUT NOTICE, AND OF ANY SPECIAL LISTING CONDITIONS IMPOSED BY OUR PRINCIPALS NO WARRANTIES OR REPRESENTATIONS ARE MADE AS TO THE CONDITION OF THE PROPERTY OR ANY HAZARDS CONTAINED THEREIN ARE ANY TO BE IMPLIED. OUTLINES ARE APPROXIMATE AND SHOWN ONLY TO IDENTIFY THE PARCEL IN CONSIDERATION.

NAI Mertz

 NAI Mertz | 21 Roland Avenue
Mount Laurel, NJ 08054
856.234.9600 | naimertz.com



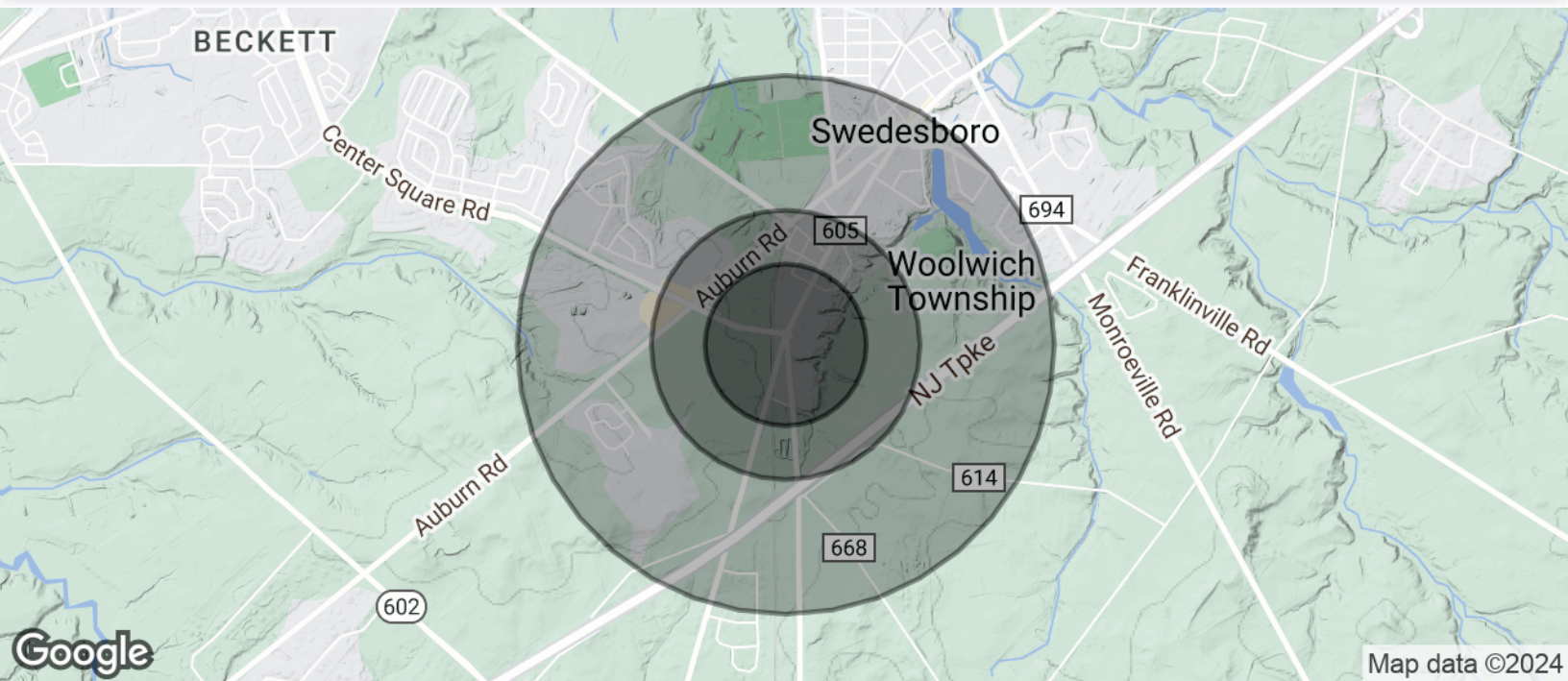
2005 KINGS HIGHWAY

Swedesboro, NJ 08085

 FOR SALE

 OFFICE

 2,700 SF



POPULATION

	0.3 MILES	0.5 MILES	1 MILE
Total Population	388	1,366	5,078
Average Age	36	37	37
Average Age (Male)	35	35	36
Average Age (Female)	37	38	38

HOUSEHOLDS & INCOME

	0.3 MILES	0.5 MILES	1 MILE
Total Households	132	454	1,689
# of Persons per HH	2.9	3	3
Average HH Income	\$122,222	\$146,053	\$159,660
Average House Value	\$365,676	\$397,072	\$421,748

Demographics data derived from AlphaMap

FOR MORE INFORMATION


Joe Riggs

 609.352.1162

 joe.riggs@naimertz.com

NAI MERTZ DISCLAIMER: NO WARRANTY OR REPRESENTATION, EXPRESS OR IMPLIED, IS MADE AS TO THE ACCURACY OF THE INFORMATION CONTAINED HEREIN, AND THE SAME IS SUBMITTED SUBJECT TO ERRORS, OMISSIONS, CHANGE OF PRICE, RENTAL OR OTHER CONDITIONS, PRIOR SALE, LEASE OR FINANCING, OR WITHDRAWAL WITHOUT NOTICE, AND OF ANY SPECIAL LISTING CONDITIONS IMPOSED BY OUR PRINCIPALS NO WARRANTIES OR REPRESENTATIONS ARE MADE AS TO THE CONDITION OF THE PROPERTY OR ANY HAZARDS CONTAINED THEREIN ARE ANY TO BE IMPLIED. OUTLINES ARE APPROXIMATE AND SHOWN ONLY TO IDENTIFY THE PARCEL IN CONSIDERATION.

NAI Mertz

 NAI Mertz | 21 Roland Avenue
Mount Laurel, NJ 08054
856.234.9600 | naimertz.com

