

# THE RITZ-CARLTON RESIDENCES, WAIKIKI BEACH

2139 KUHIO AVENUE, #27TH FLOOR  
HONOLULU, HI 96815



**COLDWELL  
BANKER  
REALTY**



Ritz-Carlton Example Unit Photo



Ritz-Carlton Example Unit Photo



Ritz-Carlton Example Unit Photo

## FEATURES

TMK: 1-2-6-018-043-\*\*\*\*  
MLS: 202510911  
Year Built: 2018

Amenities: BBQ, Concierge,  
Doorman, Exercise Room,  
Heated Pool, Meeting Room,  
Patio/Deck, Restaurant,  
Security Guard, Whirlpool.

Includes: Cable TV, Hot Water,  
Internet Service, Other Common  
Expenses, Sewer, Water



5 Bedrooms



6 Studios



8 Bathrooms



# \$10,235,000 FS

Owning the entire 27th floor at the Ritz-Carlton Residences Waikiki Beach, specifically in the Diamond Head Tower, represents a pinnacle of luxury retreat to Hawaii. With sweeping views of the Pacific Ocean, Diamond Head Crater, and the Waikiki Skyline, the residence is perfectly positioned to offer both sunrise and sunset vistas. This full-floor residence provides unmatched privacy and exclusivity, consisting of 10 separate units of studios, 1 bedrooms & 2 bedrooms. Featuring multiple bedrooms, spacious living areas, and spa-inspired bathrooms. Many of these homes are available fully furnished, making it effortless to move in, generate income through the hotel pool, or begin hosting guests. Beyond the residence, ownership comes with access to the Ritz-Carlton's signature five-star service. This includes in-residence dining, daily housekeeping (in hotel pool), concierge services, valet parking, and access to world-class amenities like infinity pools, a fitness center, a full-service spa, and top-tier dining. The Diamond Head Tower's location within Waikiki is unmatched, putting you steps away from high-end shopping, world-famous beaches, cultural landmarks, and vibrant nightlife.

## CO-LISTING AGENTS



### JORDAN T. KAM | RA

RS-66171

808.351.0876  
jordan@hawaiihomes.com  
@agent\_jtkam



### ANDREW LEITHEISER | R

RB-22557

808.781.5378  
andrew.leitheiser@cbpacific.com  
@andrew.leitheiser



### NAOKO OKADA | RA

RS-74433

808.388.1073  
naokoo@cbpacific.com  
@naokookadahawaii

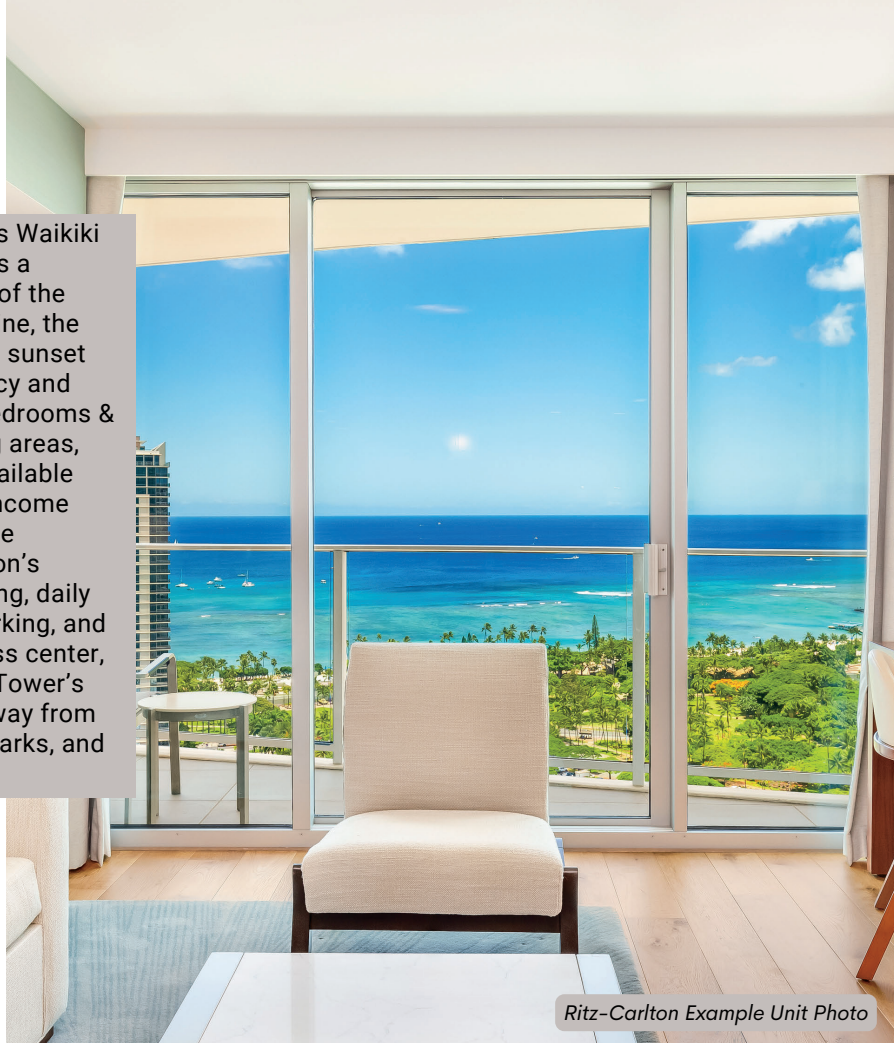


VISIT US

[www.hawaiihomes.io](http://www.hawaiihomes.io)

COLDWELL BANKER REALTY

1585 Kapiolani Blvd., Suite 1010  
Honolulu, HI 96814



Ritz-Carlton Example Unit Photo



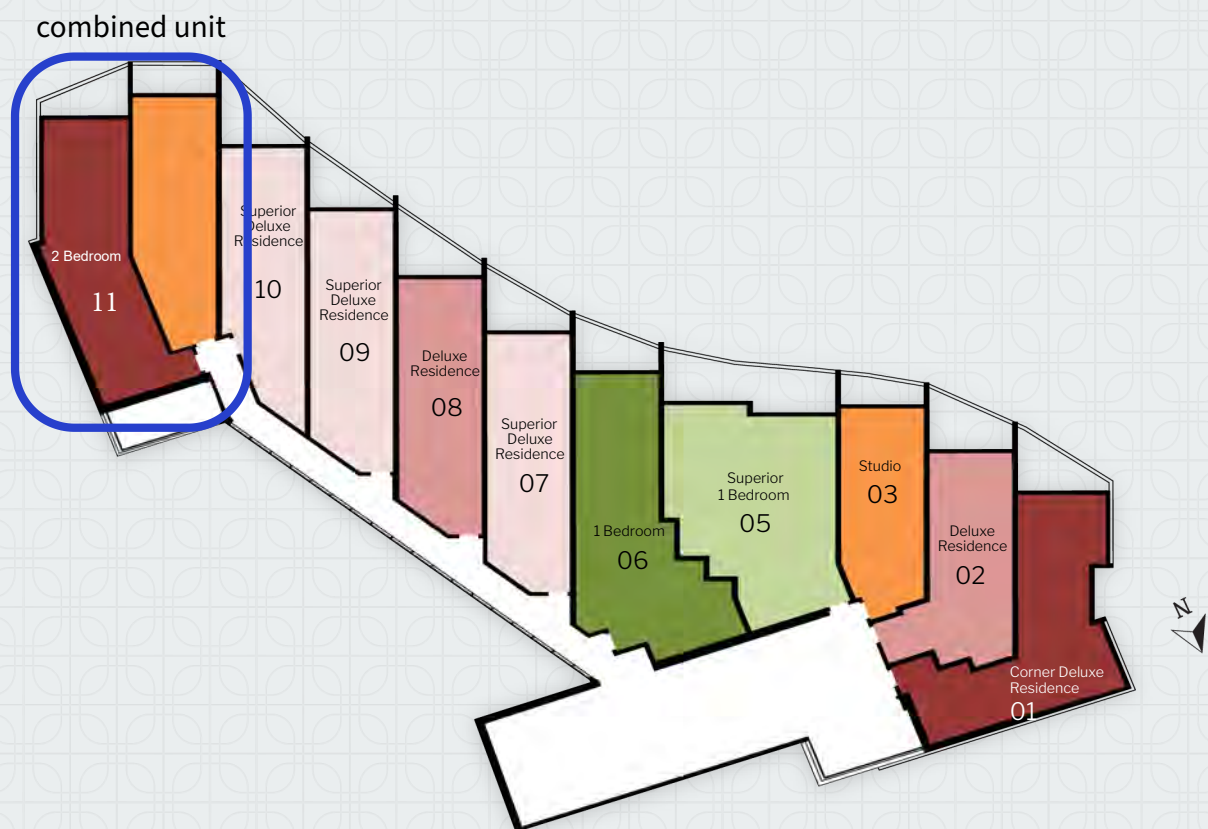
Ritz-Carlton Example Unit Photo



Ritz-Carlton Example Unit Photo



## DELUXE LEVELS | FLOOR 27

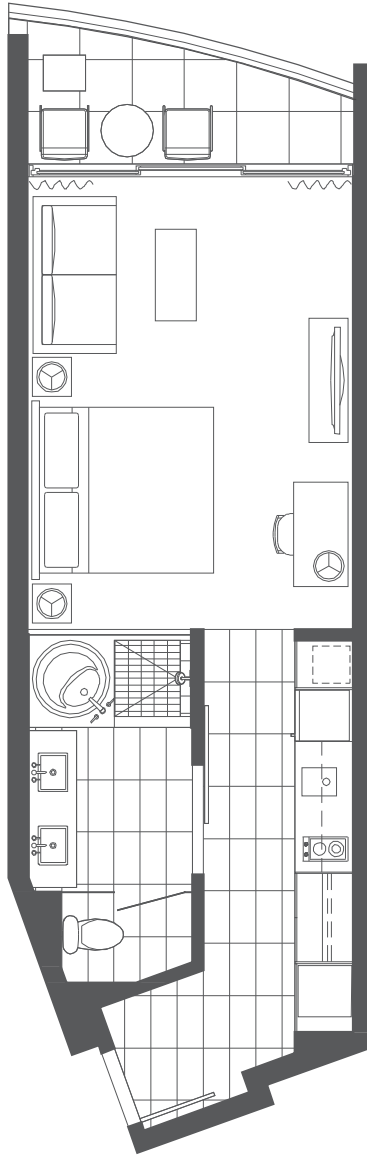




THE RITZ-CARLTON RESIDENCES®  
WAIKIKI BEACH

## STUDIO

APPROX. 420 - 485 SQ. FT. | 39 - 45 M<sup>2</sup>



STUDIOS 12 11 10 09 08 07 06 05 03 02 01

DRAFT PLAN

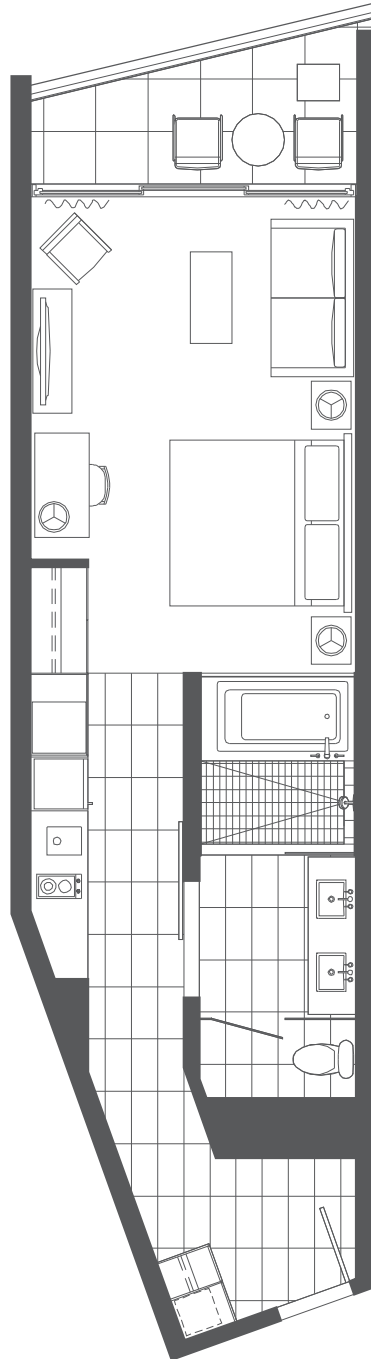
The Ritz-Carlton Residences, Waikiki Beach are not owned, developed or sold by The Ritz-Carlton Hotel Company, L.L.C. or its affiliates ("Ritz-Carlton"). Ritz-Carlton has granted a license allowing certain use of The Ritz-Carlton marks in connection with the marketing of Tower 1 and Tower 2 units; however Ritz-Carlton has not confirmed the accuracy of any of the statements or representations made herein or in any other materials. Listed by Oceanfront Realty International. In an effort to continuously improve the project's features, the developer reserves the right to change or modify plans, materials, and/or specifications without notice. All view images used in project marketing materials are approximate and may not represent the actual view; views are unprotected and subject to change as a result of future development. All square footage calculations are approximate. See Condominium Map for details. Renderings and maps represent an artist's conception and may differ from the finished product. This is not an offering for sale in any jurisdiction where the project is not registered. E.&O.E.



THE RITZ-CARLTON RESIDENCES®  
WAIKIKI BEACH

## SUPERIOR STUDIO

APPROX. 420 - 485 SQ. FT. | 39 - 45 M<sup>2</sup>



SUPERIOR STUDIOS 12 11 10 09 08 07 06 05 03 02 01

DRAFT PLAN

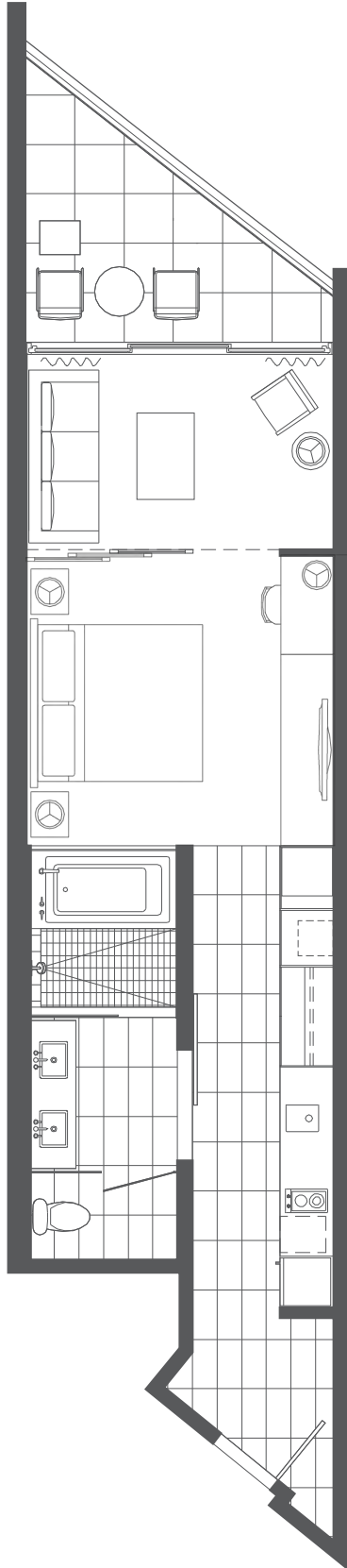
The Ritz-Carlton Residences, Waikiki Beach are not owned, developed or sold by The Ritz-Carlton Hotel Company, L.L.C. or its affiliates ("Ritz-Carlton"). Ritz-Carlton has granted a license allowing certain use of The Ritz-Carlton marks in connection with the marketing of Tower 1 and Tower 2 units; however Ritz-Carlton has not confirmed the accuracy of any of the statements or representations made herein or in any other materials. Listed by Oceanfront Realty International. In an effort to continuously improve the project's features, the developer reserves the right to change or modify plans, materials, and/or specifications without notice. All view images used in project marketing materials are approximate and may not represent the actual view; views are unprotected and subject to change as a result of future development. All square footage calculations are approximate. See Condominium Map for details. Renderings and maps represent an artist's conception and may differ from the finished product. This is not an offering for sale in any jurisdiction where the project is not registered. E.O.E.



THE RITZ-CARLTON RESIDENCES®  
WAIKIKI BEACH

## DELUXE RESIDENCE

APPROX. 500 - 530 SQ. FT. | 46 - 49 M<sup>2</sup>



DELUXE RESIDENCES 12 11 10 09 08 07 06 05 03 02 01

DRAFT PLAN

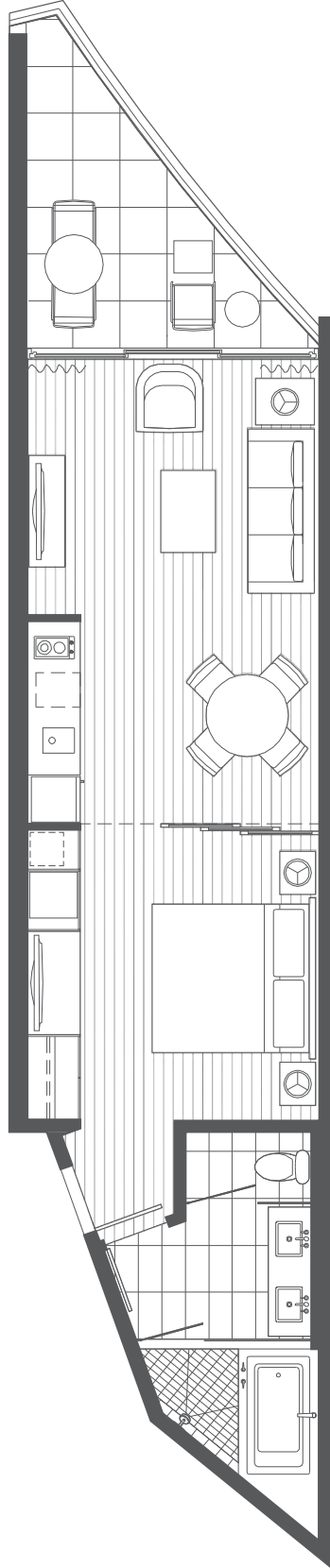
The Ritz-Carlton Residences, Waikiki Beach are not owned, developed or sold by The Ritz-Carlton Hotel Company, L.L.C. or its affiliates ("Ritz-Carlton"). Ritz-Carlton has granted a license allowing certain use of The Ritz-Carlton marks in connection with the marketing of Tower 1 and Tower 2 units; however Ritz-Carlton has not confirmed the accuracy of any of the statements or representations made herein or in any other materials. Listed by Oceanfront Realty International. In an effort to continuously improve the project's features, the developer reserves the right to change or modify plans, materials, and/or specifications without notice. All view images used in project marketing materials are approximate and may not represent the actual view; views are unprotected and subject to change as a result of future development. All square footage calculations are approximate. See Condominium Map for details. Renderings and maps represent an artist's conception and may differ from the finished product. This is not an offering for sale in any jurisdiction where the project is not registered. E.&O.E.



THE RITZ-CARLTON RESIDENCES®  
WAIKIKI BEACH

## SUPERIOR DELUXE RESIDENCE

APPROX. 540 - 580 SQ. FT. | 50 - 54 M<sup>2</sup>



SUPERIOR DELUXE RESIDENCES 12 11 10 09 08 07 06 05 03 02 01

DRAFT PLAN

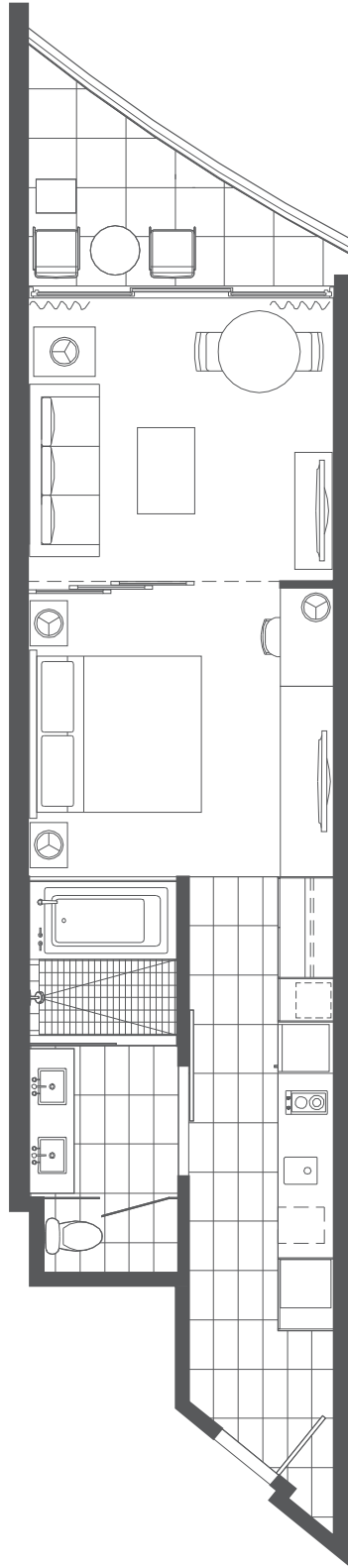
The Ritz-Carlton Residences, Waikiki Beach are not owned, developed or sold by The Ritz-Carlton Hotel Company, L.L.C. or its affiliates ("Ritz-Carlton"). Ritz-Carlton has granted a license allowing certain use of The Ritz-Carlton marks in connection with the marketing of Tower 1 and Tower 2 units; however Ritz-Carlton has not confirmed the accuracy of any of the statements or representations made herein or in any other materials. Listed by Oceanfront Realty International. In an effort to continuously improve the project's features, the developer reserves the right to change or modify plans, materials, and/or specifications without notice. All view images used in project marketing materials are approximate and may not represent the actual view; views are unprotected and subject to change as a result of future development. All square footage calculations are approximate. See Condominium Map for details. Renderings and maps represent an artist's conception and may differ from the finished product. This is not an offering for sale in any jurisdiction where the project is not registered. E.O.E.



THE RITZ-CARLTON RESIDENCES®  
WAIKIKI BEACH

## SUPERIOR DELUXE RESIDENCE

APPROX. 540 - 580 SQ. FT. | 50 - 54 M<sup>2</sup>



SUPERIOR DELUXE RESIDENCES 12 11 10 09 08 07 06 05 03 02 01

DRAFT PLAN

The Ritz-Carlton Residences, Waikiki Beach are not owned, developed or sold by The Ritz-Carlton Hotel Company, L.L.C. or its affiliates ("Ritz-Carlton"). Ritz-Carlton has granted a license allowing certain use of The Ritz-Carlton marks in connection with the marketing of Tower 1 and Tower 2 units; however Ritz-Carlton has not confirmed the accuracy of any of the statements or representations made herein or in any other materials. Listed by Oceanfront Realty International. In an effort to continuously improve the project's features, the developer reserves the right to change or modify plans, materials, and/or specifications without notice. All view images used in project marketing materials are approximate and may not represent the actual view; views are unprotected and subject to change as a result of future development. All square footage calculations are approximate. See Condominium Map for details. Renderings and maps represent an artist's conception and may differ from the finished product. This is not an offering for sale in any jurisdiction where the project is not registered. E.O.E.

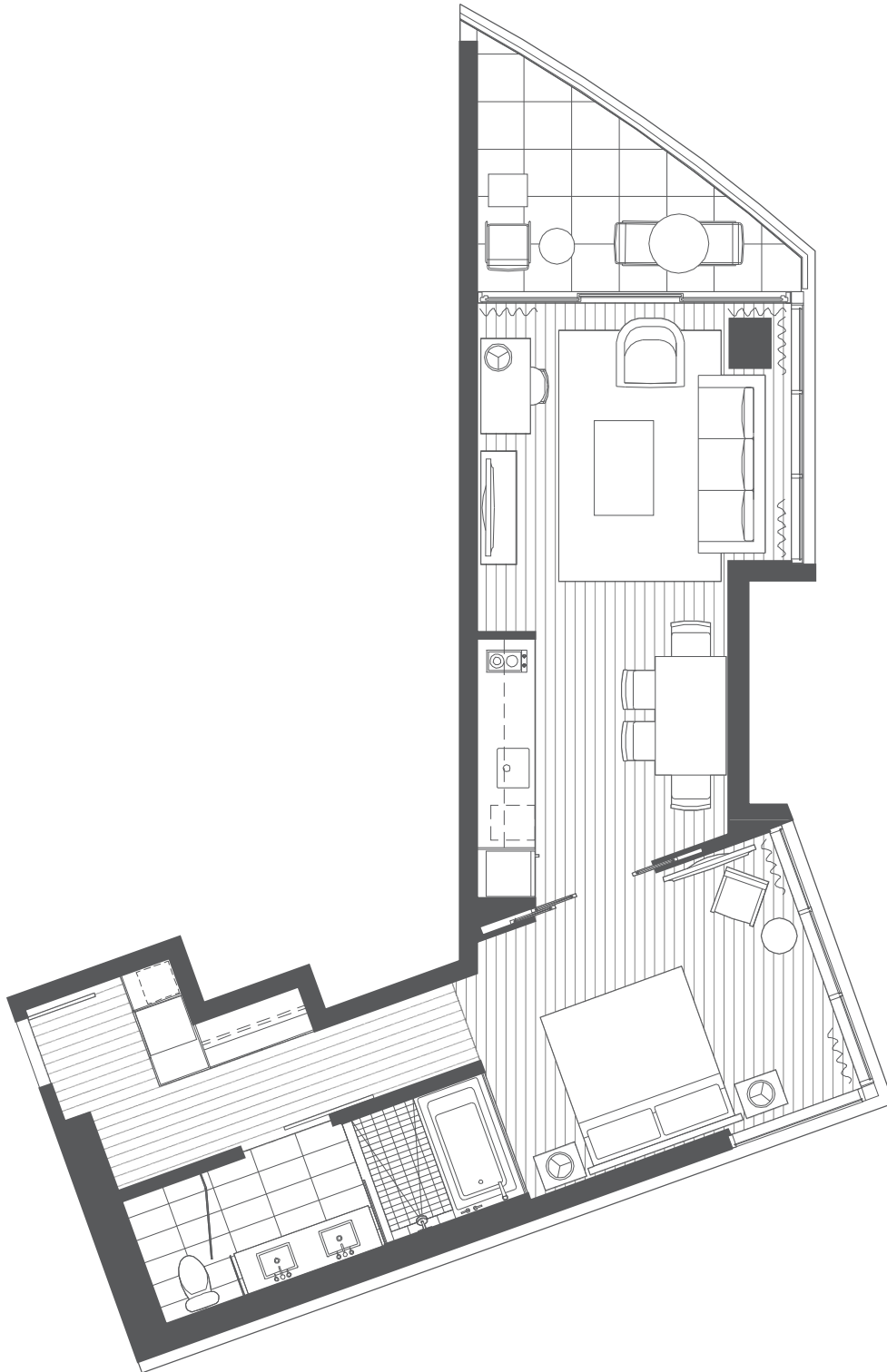




THE RITZ-CARLTON RESIDENCES®  
WAIKIKI BEACH

## CORNER DELUXE RESIDENCE

APPROX. 625 - 685 SQ. FT. | 58 - 64 M<sup>2</sup>



CORNER DELUXE RESIDENCES 12 11 10 09 08 07 06 05 03 02 01

DRAFT PLAN

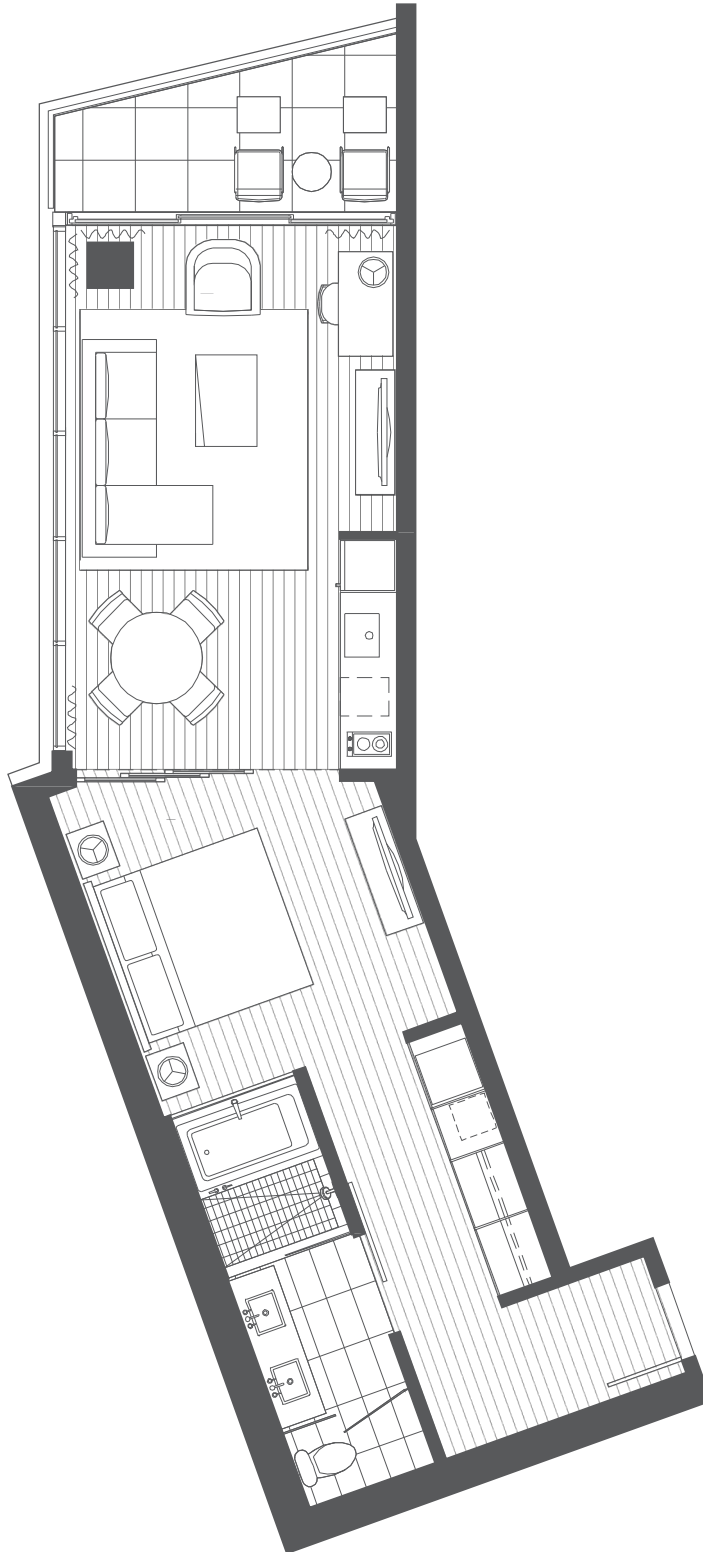
The Ritz-Carlton Residences, Waikiki Beach are not owned, developed or sold by The Ritz-Carlton Hotel Company, L.L.C. or its affiliates ("Ritz-Carlton"). Ritz-Carlton has granted a license allowing certain use of The Ritz-Carlton marks in connection with the marketing of Tower 1 and Tower 2 units; however Ritz-Carlton has not confirmed the accuracy of any of the statements or representations made herein or in any other materials. Listed by Oceanfront Realty International. In an effort to continuously improve the project's features, the developer reserves the right to change or modify plans, materials, and/or specifications without notice. All view images used in project marketing materials are approximate and may not represent the actual view; views are unprotected and subject to change as a result of future development. All square footage calculations are approximate. See Condominium Map for details. Renderings and maps represent an artist's conception and may differ from the finished product. This is not an offering for sale in any jurisdiction where the project is not registered. E.&O.E.



THE RITZ-CARLTON RESIDENCES®  
WAIKIKI BEACH

## CORNER DELUXE RESIDENCE

APPROX. 625 - 685 SQ. FT. | 58 - 64 M<sup>2</sup>



CORNER DELUXE RESIDENCES 12 11 10 09 08 07 06 05 03 02 01

DRAFT PLAN

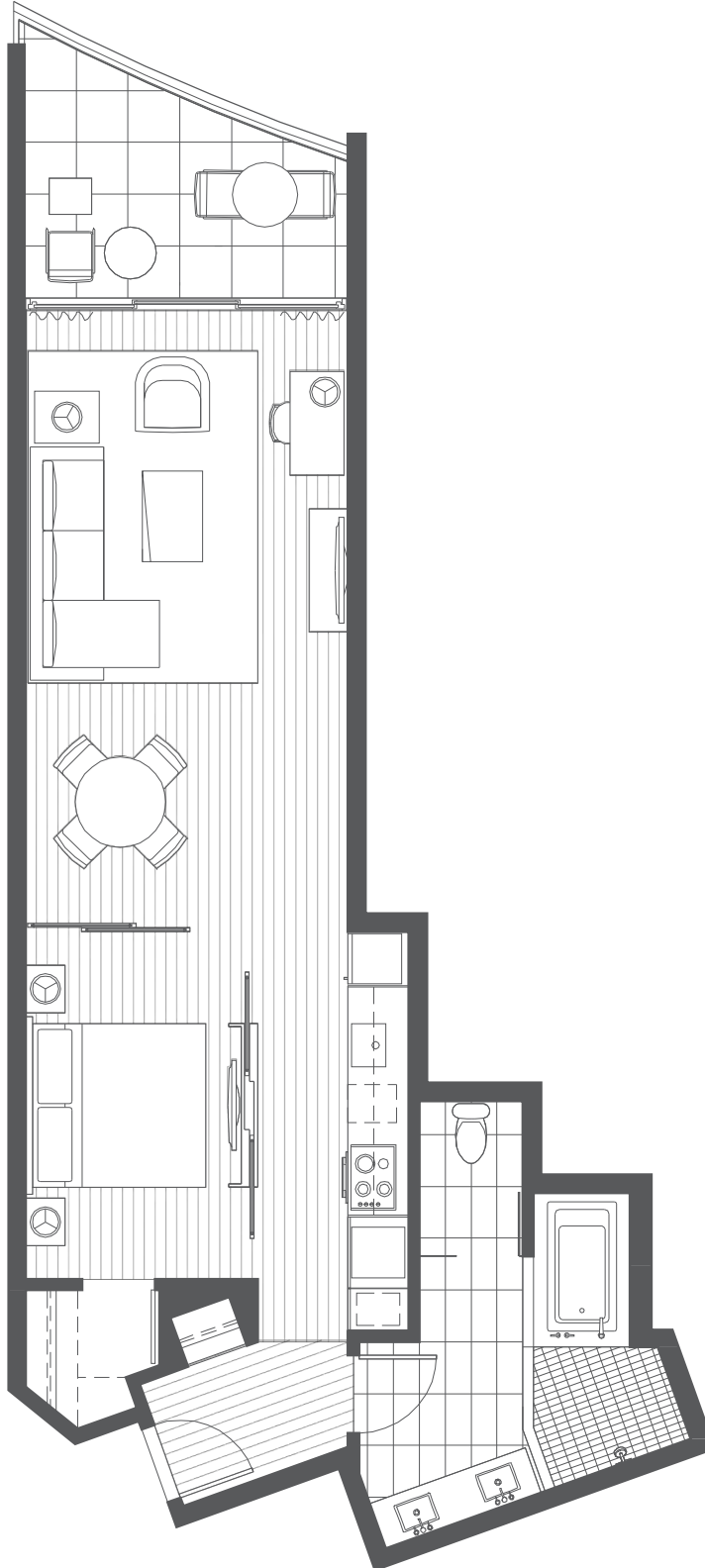
The Ritz-Carlton Residences, Waikiki Beach are not owned, developed or sold by The Ritz-Carlton Hotel Company, L.L.C. or its affiliates ("Ritz-Carlton"). Ritz-Carlton has granted a license allowing certain use of The Ritz-Carlton marks in connection with the marketing of Tower 1 and Tower 2 units; however Ritz-Carlton has not confirmed the accuracy of any of the statements or representations made herein or in any other materials. Listed by Oceanfront Realty International. In an effort to continuously improve the project's features, the developer reserves the right to change or modify plans, materials, and/or specifications without notice. All view images used in project marketing materials are approximate and may not represent the actual view; views are unprotected and subject to change as a result of future development. All square footage calculations are approximate. See Condominium Map for details. Renderings and maps represent an artist's conception and may differ from the finished product. This is not an offering for sale in any jurisdiction where the project is not registered. E.&O.E.



THE RITZ-CARLTON RESIDENCES®  
WAIKIKI BEACH

## ONE BEDROOM

APPROX. 735 - 775 SQ. FT. | 68 - 72 M<sup>2</sup>



ONE BEDROOMS 12 11 10 09 08 07 06 05 03 02 01

DRAFT PLAN

The Ritz-Carlton Residences, Waikiki Beach are not owned, developed or sold by The Ritz-Carlton Hotel Company, L.L.C. or its affiliates ("Ritz-Carlton"). Ritz-Carlton has granted a license allowing certain use of The Ritz-Carlton marks in connection with the marketing of Tower 1 and Tower 2 units; however Ritz-Carlton has not confirmed the accuracy of any of the statements or representations made herein or in any other materials. Listed by Oceanfront Realty International. In an effort to continuously improve the project's features, the developer reserves the right to change or modify plans, materials, and/or specifications without notice. All view images used in project marketing materials are approximate and may not represent the actual view; views are unprotected and subject to change as a result of future development. All square footage calculations are approximate. See Condominium Map for details. Renderings and maps represent an artist's conception and may differ from the finished product. This is not an offering for sale in any jurisdiction where the project is not registered. E.O.E.

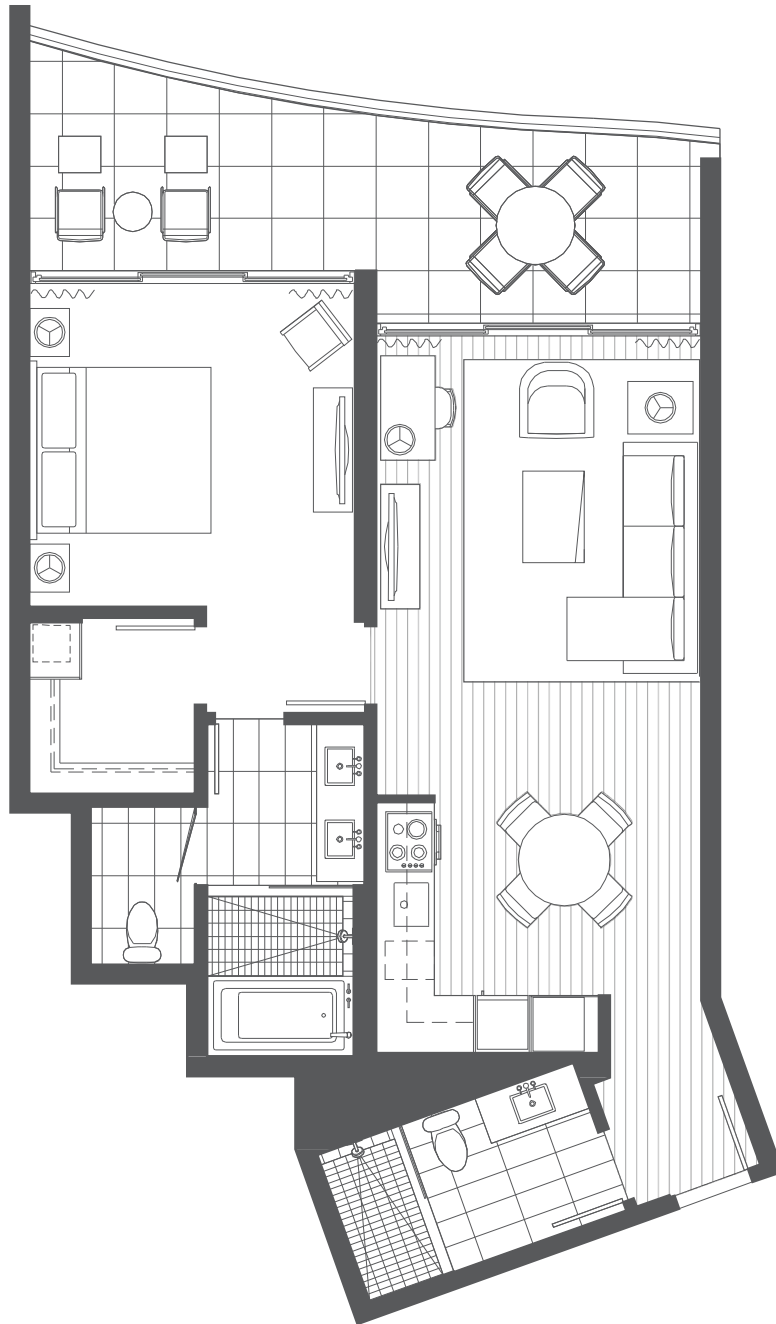




THE RITZ-CARLTON RESIDENCES®  
WAIKIKI BEACH

## SUPERIOR ONE BEDROOM

APPROX. 815 - 890 SQ. FT. | 76 - 83 M<sup>2</sup>



SUPERIOR ONE BEDROOMS 12 11 10 09 08 07 06 05 03 02 01

DRAFT PLAN

The Ritz-Carlton Residences, Waikiki Beach are not owned, developed or sold by The Ritz-Carlton Hotel Company, L.L.C. or its affiliates ("Ritz-Carlton"). Ritz-Carlton has granted a license allowing certain use of The Ritz-Carlton marks in connection with the marketing of Tower 1 and Tower 2 units; however Ritz-Carlton has not confirmed the accuracy of any of the statements or representations made herein or in any other materials. Listed by Oceanfront Realty International. In an effort to continuously improve the project's features, the developer reserves the right to change or modify plans, materials, and/or specifications without notice. All view images used in project marketing materials are approximate and may not represent the actual view; views are unprotected and subject to change as a result of future development. All square footage calculations are approximate. See Condominium Map for details. Renderings and maps represent an artist's conception and may differ from the finished product. This is not an offering for sale in any jurisdiction where the project is not registered. E.&O.E.