

Commercial Building

1300 East Wendover Avenue | Greensboro, NC 27405



- ◆ Available For Lease
- ◆ 5,000 SF
- ◆ High Traffic Counts - 43,000 Average Daily
- ◆ Zoned Light Industrial & Potential For Retail

Conveniently located in northeast Greensboro at the corner of East Wendover Avenue and East Lindsay Street and minutes from Highway 29.

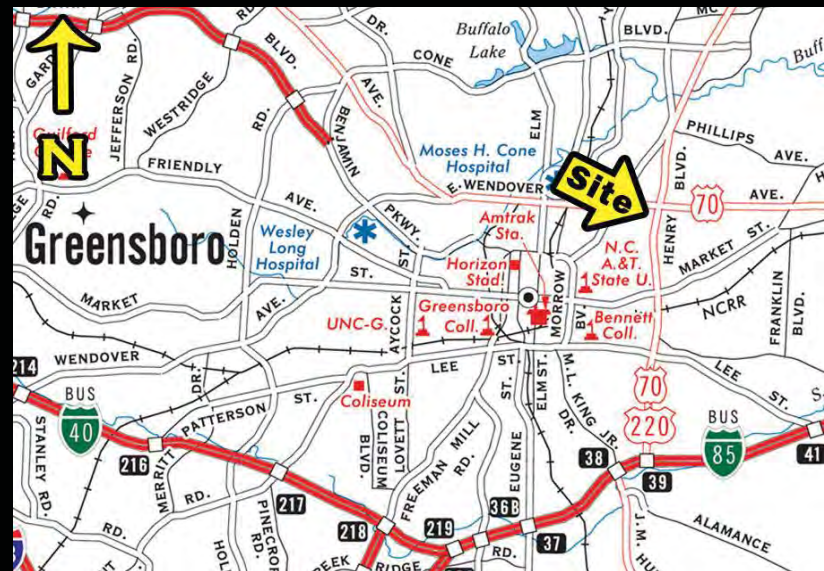
The property is fully heated and cooled with high ceilings (11' 10") in the front half of the building. There is also room for approximately 10 parking spaces (in the front and back).

JJ Joubran, CCIM
(336) 270-9775
JJ@JoubranCommercial.com



Commercial Building

1300 East Wendover Avenue | Greensboro, NC 27405



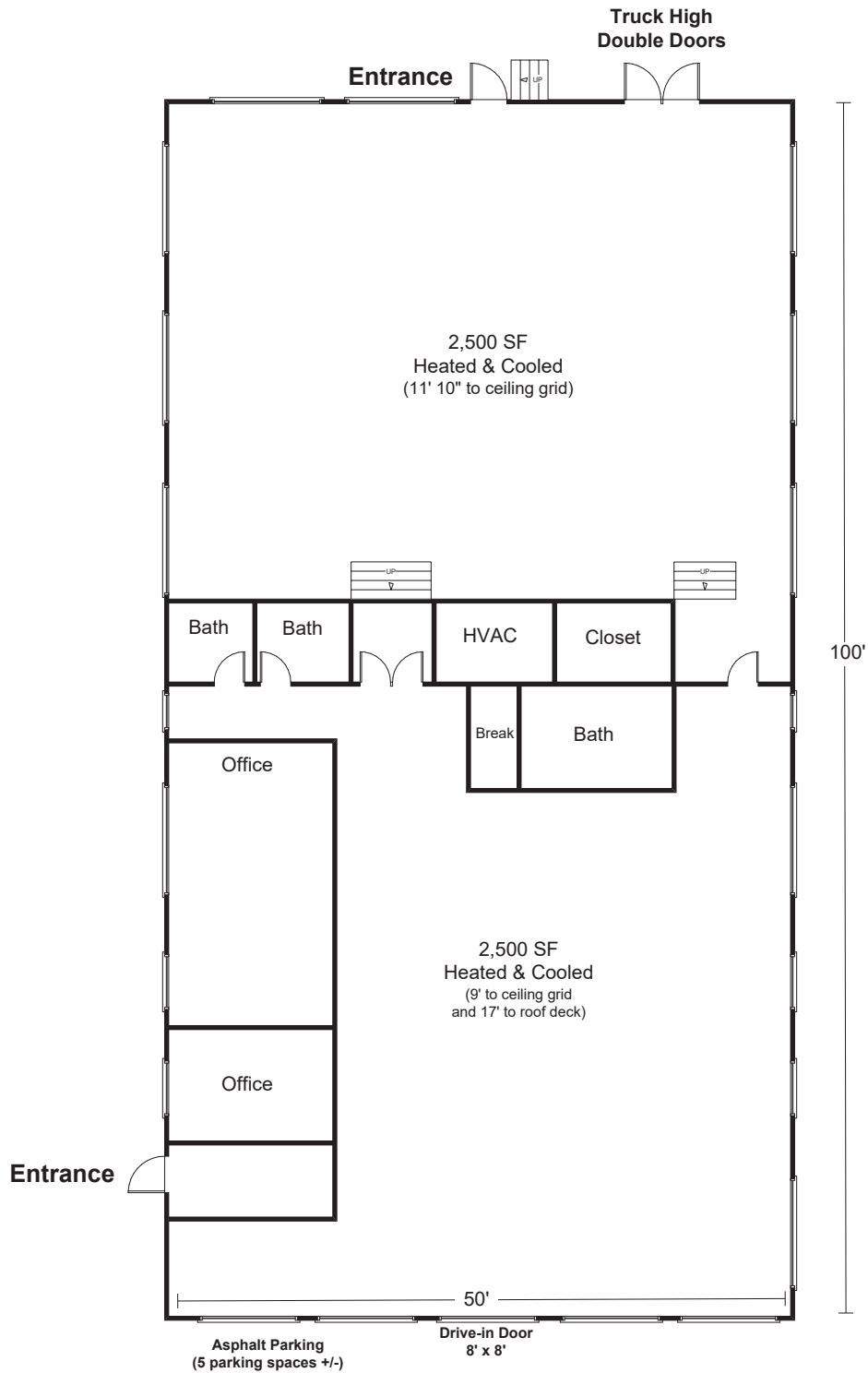
JJ Joubran, CCIM

(336) 270-9775

JJ@JoubranCommercial.com

1300 East Wendover Avenue

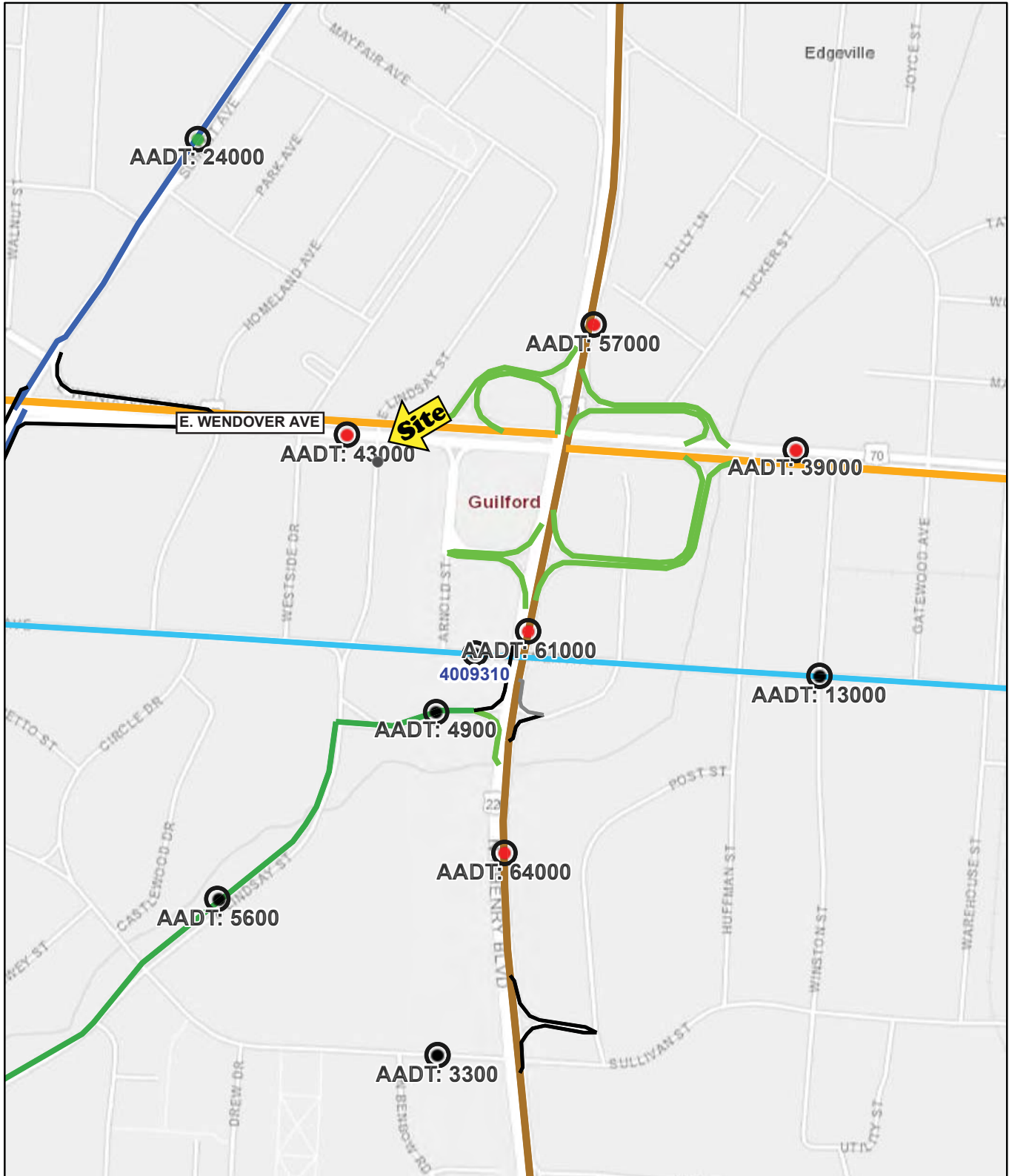
5,000 SF +/-



Contact:

JJ Joubran, CCIM
Joubran Commercial Properties
(336) 270-9775
JJ@JoubranCommercial.com
www.JoubranCommercial.com

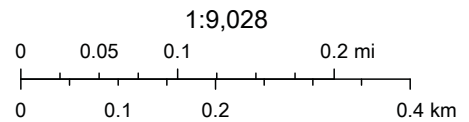
NCDOT Annual Average Daily Traffic (2017)



12/10/2019, 3:25:49 PM

NCDOT_AADT_Stations

- US Routes
- Secondary Routes
- Non-System Routes
- Traffic_Analysis_PTC



NCDOT GIS Unit, Esri, HERE, Garmin, (c) OpenStreetMap contributors, and the GIS user community