

LAND FOR SALE

0 Limestone Road
Dorchester, SC 29437

Neal Walsh | Senior Broker | nwalsh@cbcatlantic.com

Trey Davis | Associate | tdavis@cbcatlantic.com

LAND SEEKERS
REAL ESTATE ADVISORS



COLDWELL BANKER
COMMERCIAL
ATLANTIC



ADDRESS

0 Limestone Road
Dorchester, SC 29437



PRICE

Lot 7: \$129,500



TAX ID

075-00-00-068.000



ZONING

Dorchester - AR -
Agricultural Residential



COUNTY

Dorchester County

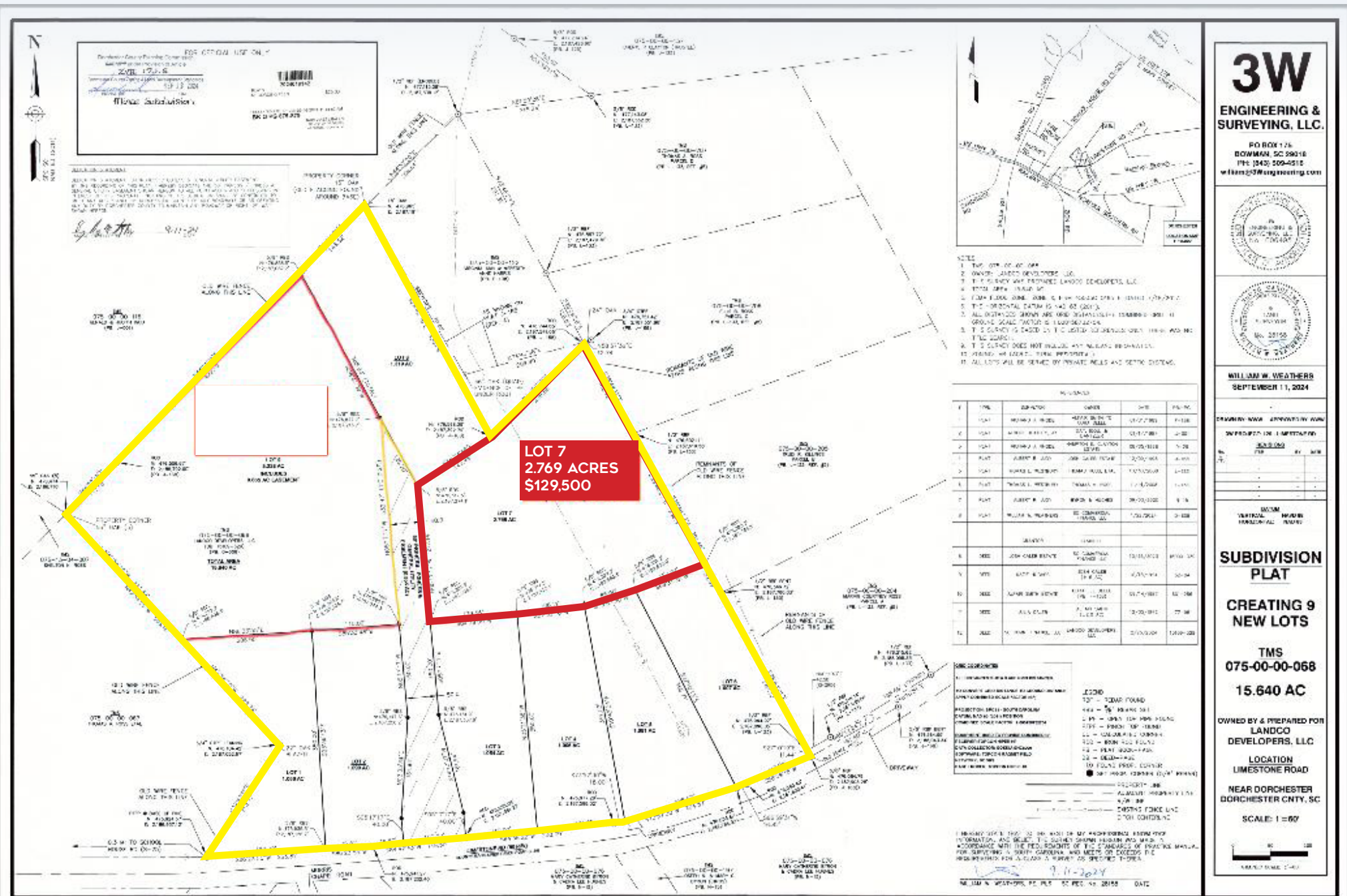


ACRES

Lot 7: 2.769 Acres

PROPERTY OVERVIEW

Amazing 2.8 acres, build your dream home. 5 miles from Walmart Distribution Center No HOA . Free to build a home or bring a New Doublewide. Its your land!



3W
ENGINEERING &
SURVEYING, LLC.

PO BOX 126
DORCHESTER, SC 29016
PH: (843) 509-4312
william@3wengineering.com



WILLIAM W. WEATHERS
SEPTEMBER 11, 2024

CREATING 9
NEW LOTS

LOT	AREA (AC)	VALUE (\$)
1	2.769	129,500
2	2.769	129,500
3	2.769	129,500
4	2.769	129,500
5	2.769	129,500
6	2.769	129,500
7	2.769	129,500
8	2.769	129,500
9	2.769	129,500

**SUBDIVISION
PLAT**

**CREATING 9
NEW LOTS**

TMS
075-00-00-068
15.640 AC

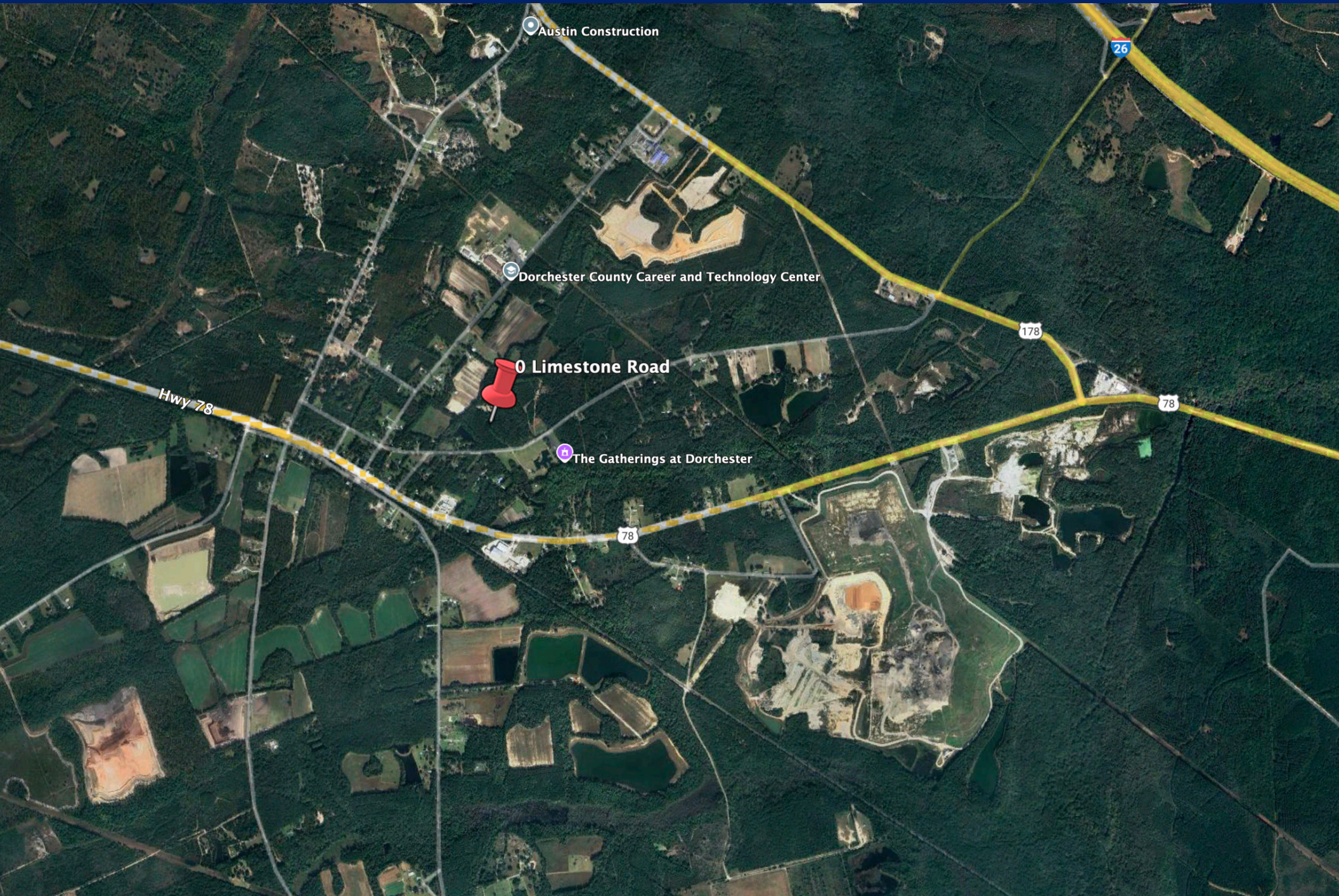
OWNED BY & PREPARED FOR
LANDCO
DEVELOPERS, LLC

LOCATION
LIMESTONE ROAD
NEAR DORCHESTER
DORCHESTER CNTY, SC

SCALE: 1"=60'



AREA MAP



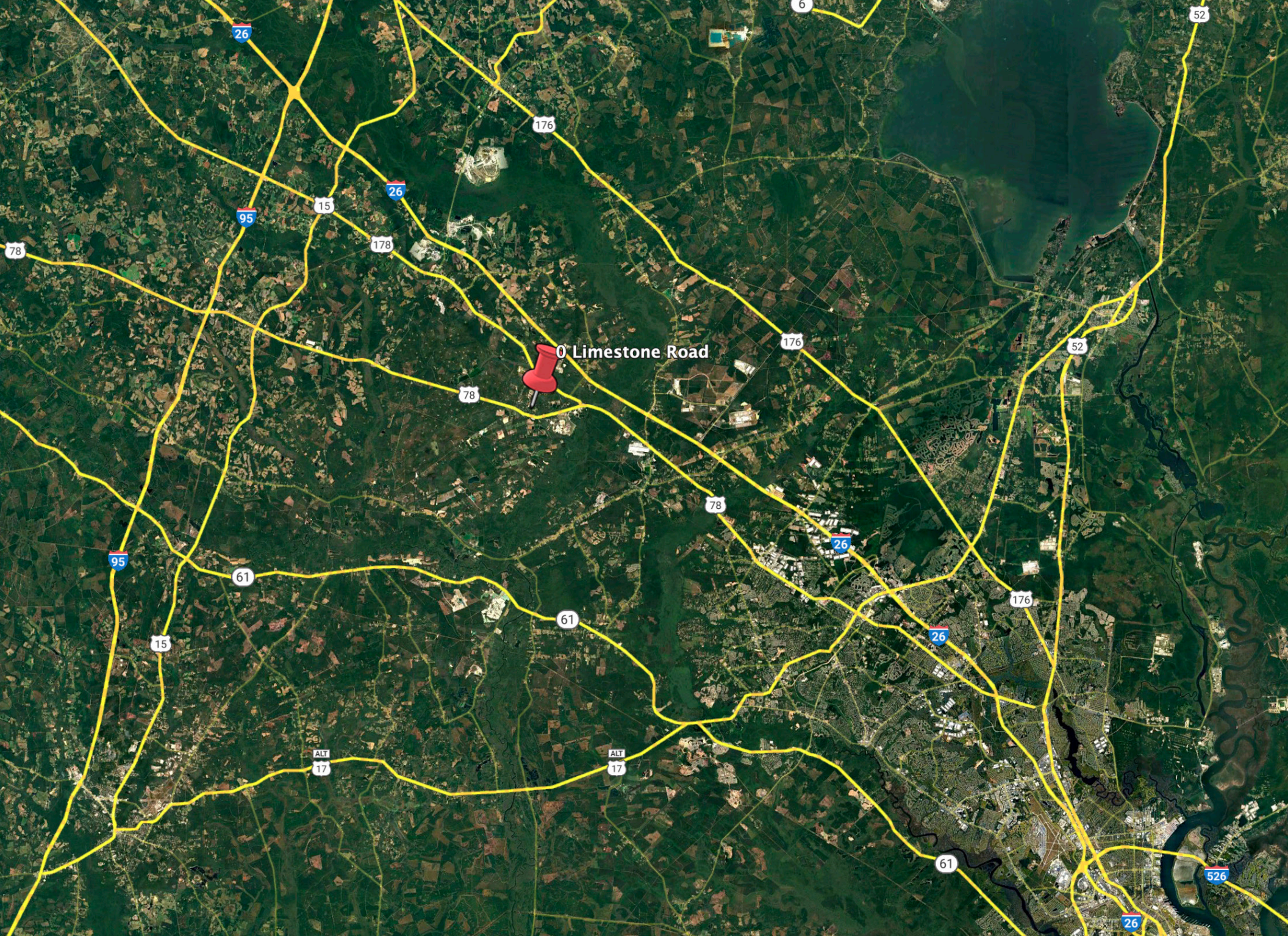
COLDWELL BANKER
COMMERCIAL
ATLANTIC



LAND SEEKERS
REAL ESTATE ADVISORS
COLDWELL BANKER
COMMERCIAL
ATLANTIC

0 Limestone Road | Dorchester, SC 29437

LAND FOR SALE



0 Limestone Road



COLDWELL BANKER
COMMERCIAL
ATLANTIC



LAND SEEKERS
REAL ESTATE ADVISORS
COLDWELL BANKER
COMMERCIAL
ATLANTIC

0 Limestone Road | Dorchester, SC 29437

LAND FOR SALE

Neal Walsh
Senior Broker
(C) 843.330.3787
nwalsh@cbsatlantic.com

Trey Davis
Associate
(C) 803.468.7766
tdavis@cbsatlantic.com

LAND SEEKERS
REAL ESTATE ADVISORS



COLDWELL BANKER
COMMERCIAL
ATLANTIC



COLDWELL BANKER
COMMERCIAL
ATLANTIC

3506 W Montague Ave Suite 200
North Charleston, SC 29418
843.744.9877
cbsatlantic.com | cbcretailatlantic.com

LOT 7
2.769 ACRES
\$129,500

This information has been obtained from sources believed reliable but has not been verified for accuracy or completeness. Coldwell Banker Commercial Atlantic makes no guarantee, representation or warranty and accepts no responsibility or liability as to the accuracy, completeness, or reliability of the information contained herein. You should conduct a careful, independent investigation of the property and verify all information. Any reliance on this information is solely at your own risk.

The information contained herein should be considered confidential and remains the sole property of Coldwell Banker Commercial Atlantic at all times. Although every effort has been made to ensure accuracy, no liability will be accepted for any errors or omissions. Disclosure of any information contained herein is prohibited except with the express written permission of Coldwell Banker Commercial Atlantic.