

For Sale // Development Land

Adams Landing, Smada Drive, Sanford, ME



\$290,000

Property Features:

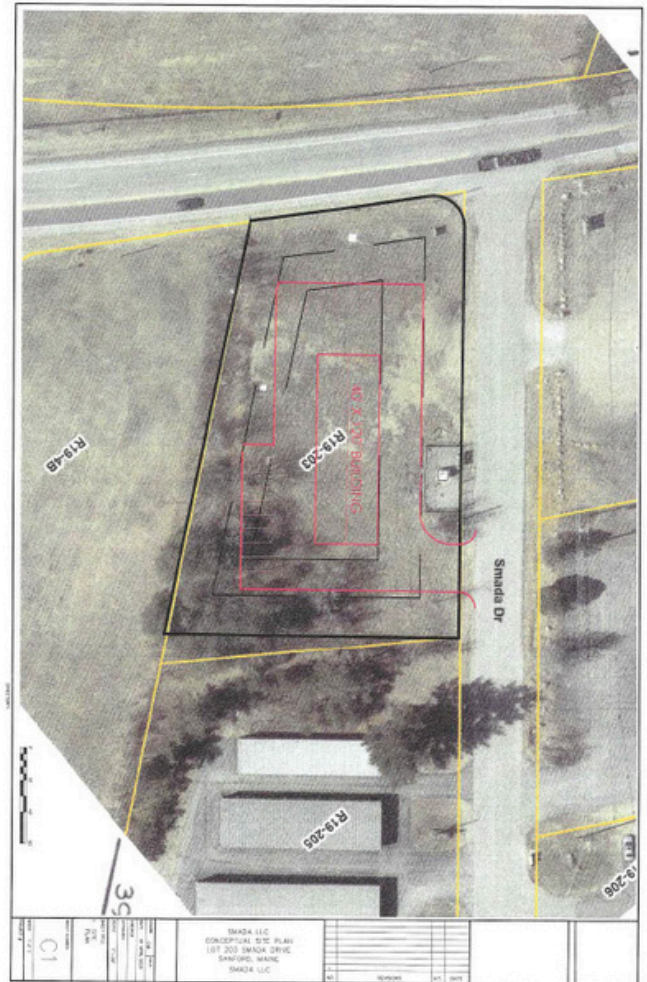
- 👁️ High Visibility
- 🏗️ Developable Land
- ✈️ Airport Proximity
- 🔌 Utilities

About:

This property is located at the corner of Main and Smada Dr. at the entrance to the Sanford Industrial Park. It is across from the Sanford Seacoast Regional Airport and conveniently located at the gateway to Sanford from Kennebunk and Wells.

Contact Details:

- 👤 **Marc Brunelle**
- ☎️ 207-229-5156
- ✉️ Marc.Brunelle@SVN.com



For Sale // Development Land

Adams Landing, Smada Drive, Sanford, ME



Property Highlights:

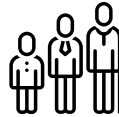
- Suitable for 40' X 120' building
- High visibility
- Strong traffic counts
- Municipal water, sewer, and fiber internet available
- Near Walmart, Lowes, and Tractor Supply

Property Details:



Population

1 mile: 568
3 miles: 5,384
5 miles: 19,461



Median Age

1 mile: 50 Years
3 miles: 49 Years
5 miles: 43 Years



Traffic Count

12,000 + VPD

SALE PRICE // \$290,000

LOT SIZE // 1.04 Acres

ZONING // IB- Industrial Business
