

Office/Retail Building for Sale

29,765 SF Building Across Two Floors

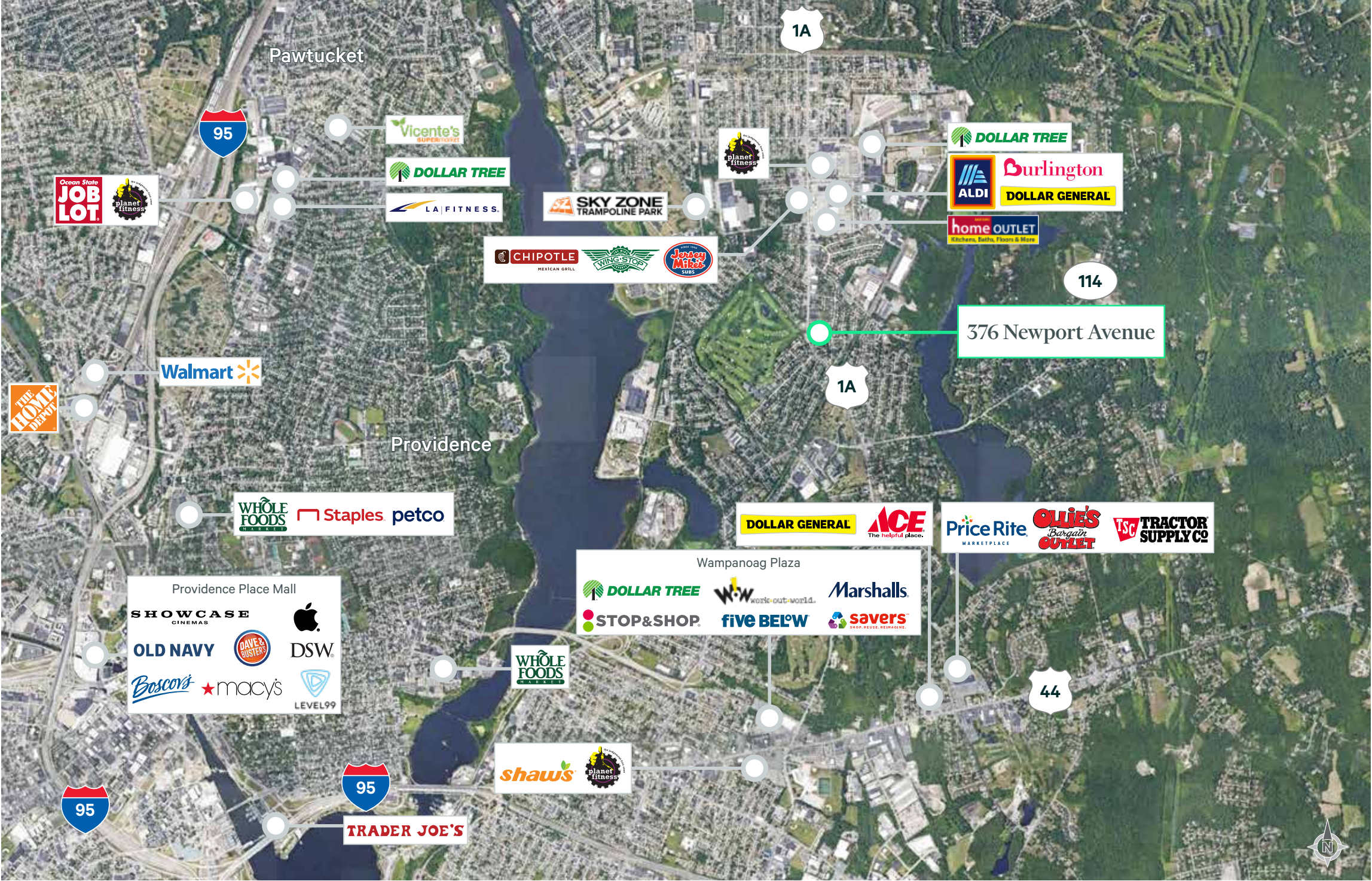
376 Newport Avenue
East Providence, Rhode Island



Features

- + Office/Retail building at the start of the Newport Avenue corridor
- + Two (2) private parking lots
- + Plethora of private offices and shared work space
- + 15 minutes to Downtown Providence
- + 2.2 miles to Interstate 95

Market Aerial



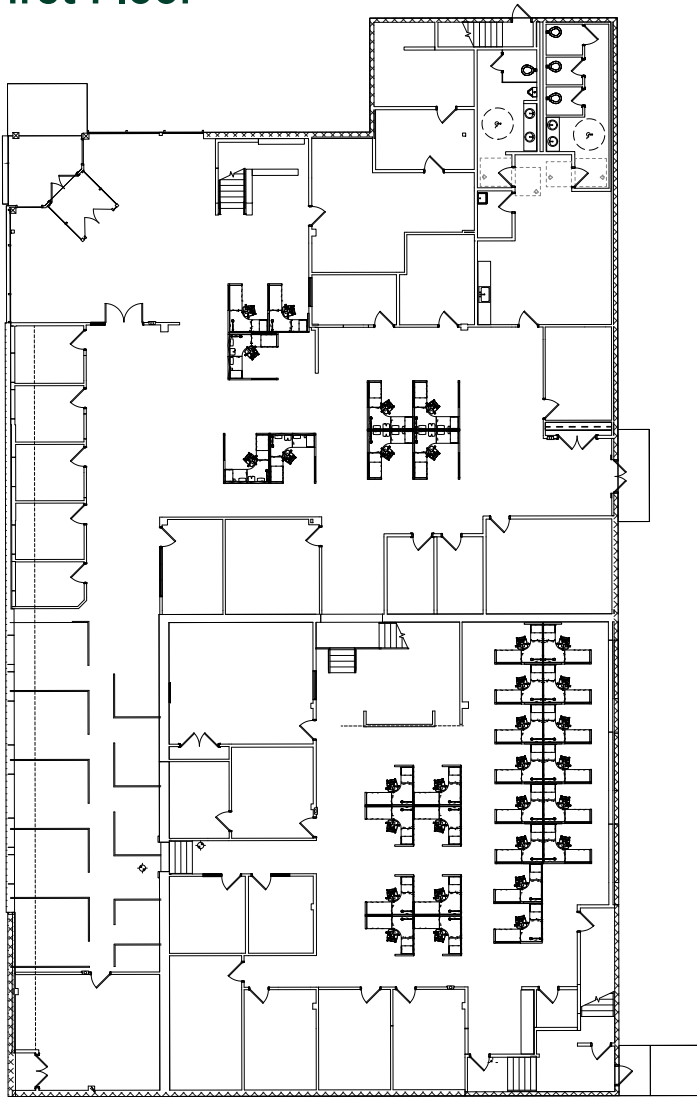
2024 Demographics	1 Mile	3 Miles	5 Miles	7 Miles
Estimated Population	8,356	120,495	329,245	513,629
Estimated Households	3,877	51,287	130,609	202,356
Estimated Average Household Income	\$119,276	\$111,420	\$100,731	\$103,458
Estimated Daytime Population	8,608	124,035	349,189	496,375

Office/Retail Building for Sale

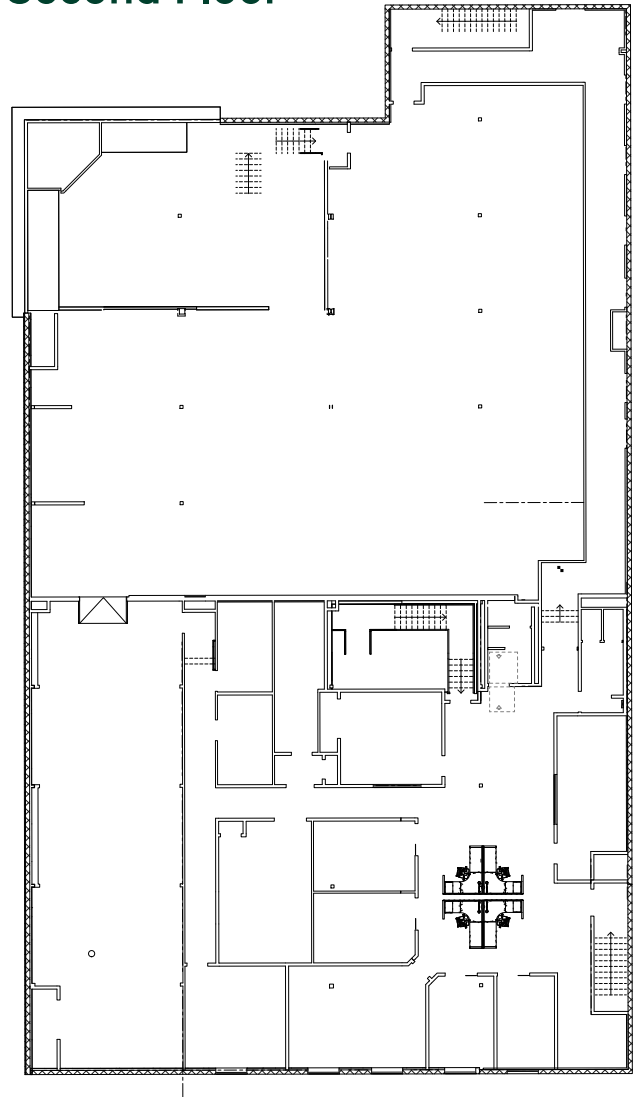
376 Newport Avenue | East Providence, Rhode Island

For Sale

First Floor



Second Floor



Contact Us

Christian Van Horn

Senior Associate

+1 401 330 1911

christian.vanhorn@cbre.com

Rob Robledo

Executive Vice President

+1 617 912 6869

rob.robledo@cbre.com

© 2025 CBRE, Inc. All rights reserved. This information has been obtained from sources believed reliable but has not been verified for accuracy or completeness. CBRE, Inc. makes no guarantee, representation or warranty and accepts no responsibility or liability as to the accuracy, completeness, or reliability of the information contained herein. You should conduct a careful, independent investigation of the property and verify all information. Any reliance on this information is solely at your own risk. CBRE and the CBRE logo are service marks of CBRE, Inc. All other marks displayed on this document are the property of their respective owners, and the use of such marks does not imply any affiliation with or endorsement of CBRE. Photos herein are the property of their respective owners. Use of these images without the express written consent of the owner is prohibited.