

Downtown Historic Brick Building

4,200 SQ FT ON THE HIP STRIP IN MISSOULA, MT



Katie C. Ward
REAL ESTATE

817 S Higgins Avenue
Missoula, MT
Offered at \$1,107,000

OFFERING MEMORANDUM

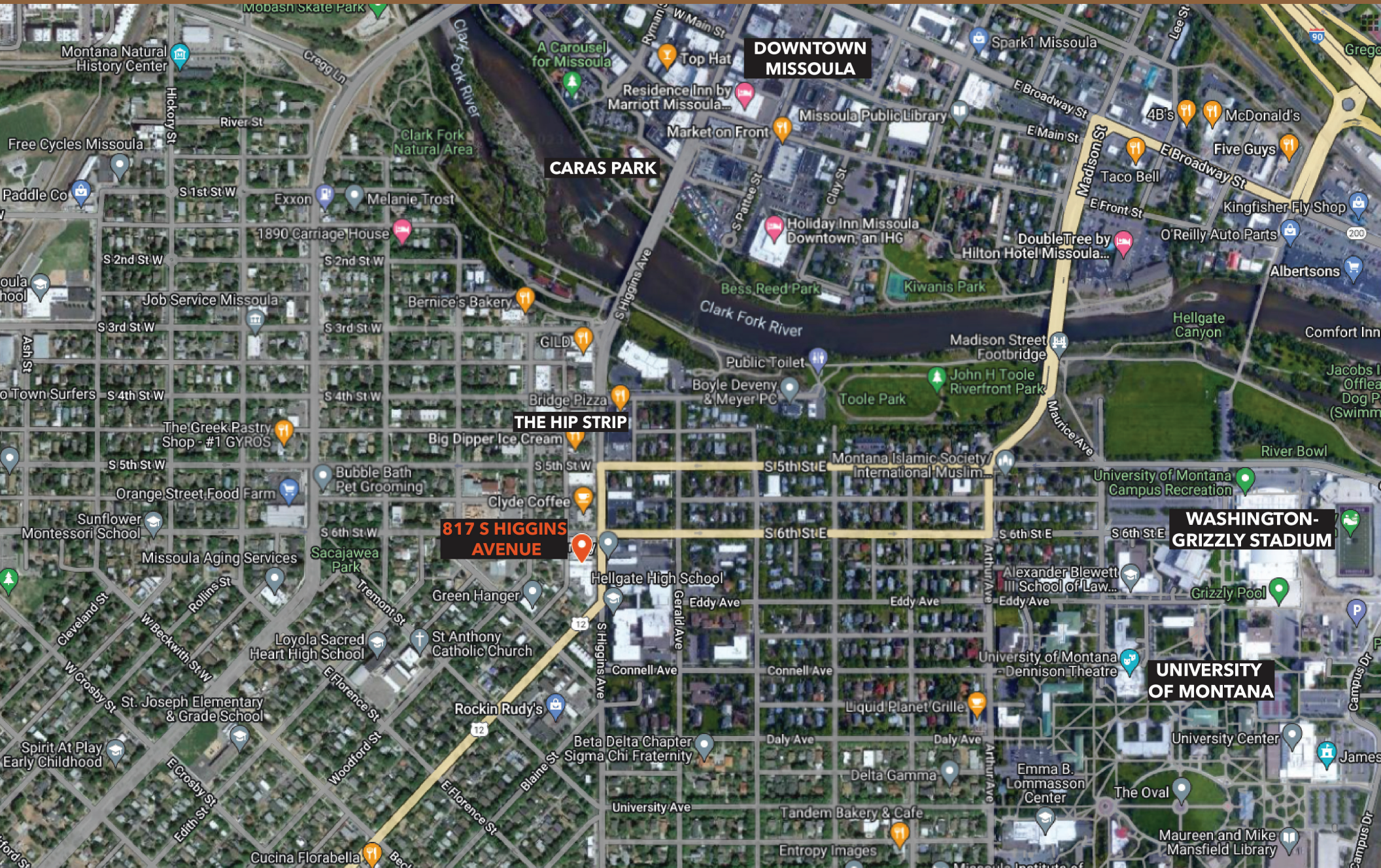


817 S Higgins Avenue
Missoula, Montana

Presented By



Katie L. Ward
Commercial Real Estate Broker
(406) 596-4000
katie@katieward.com



PROPERTY OVERVIEW



817 South Higgins is a hard to find single-level, 4200 square foot Brick Downtown Building on the Missoula Hip Strip!

Complete with 16 ft +/- ceilings, this building has been Owner Occupied and very well maintained by Seller, Bryant Photography for 25+ years. The tasteful finishes, open floor plan, nice tall ceilings and overall design lends itself to both a user owner, single-tenant or multi-tenant use.

OFFERING PRICE: \$1,107,000

Price Per Square Foot: \$263.57

4,200 sq ft Open Floor Plan

2 Large Restrooms

Free On Street Parking, Alley Access & 2 Leased Parking Spaces at the South end of the block

High Visibility Storefront Frontage on S Higgins Avenue

21,000+ Daily Traffic Count (VPD)

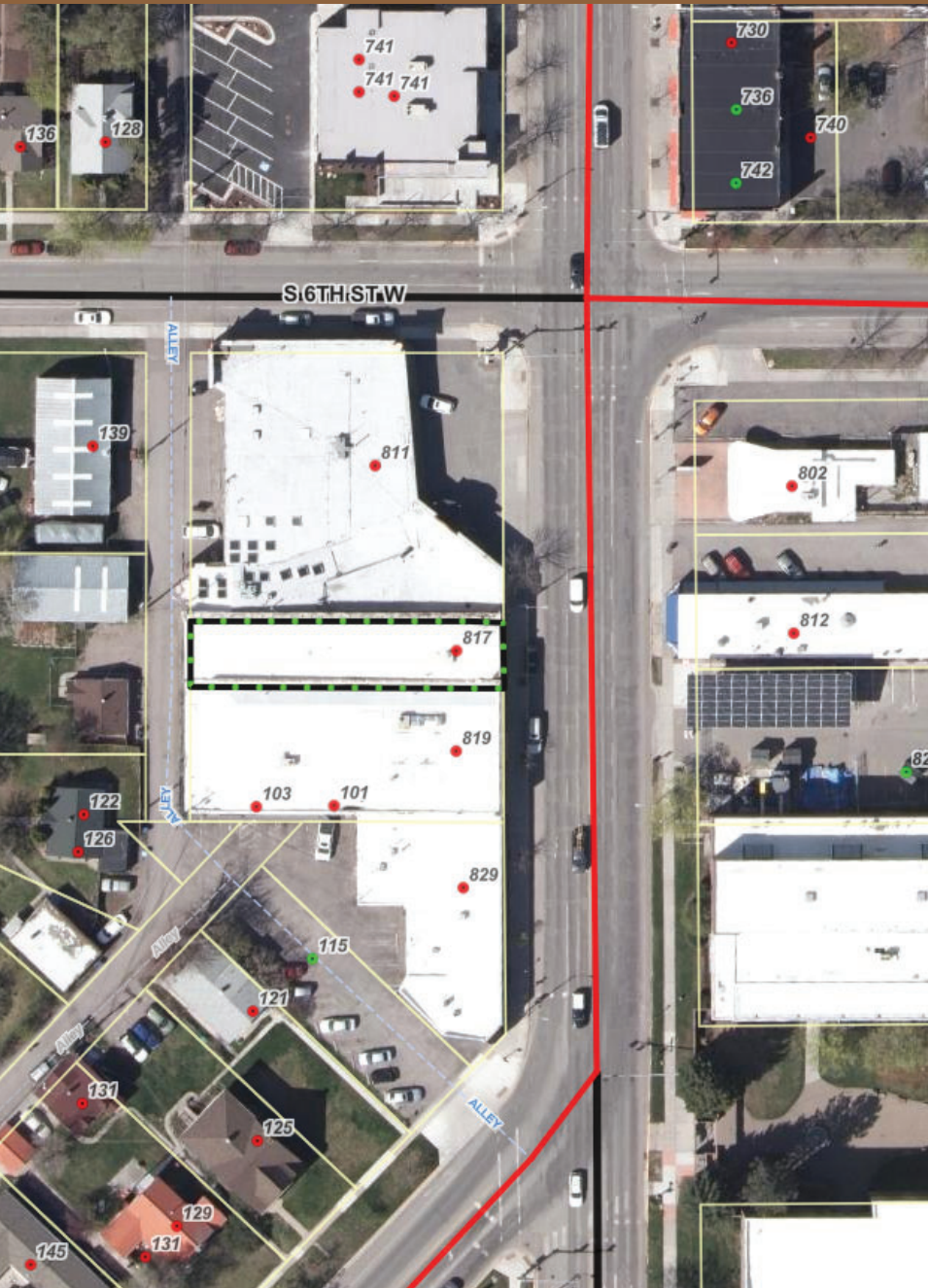
13 min Drive to MSO Airport

Located on Missoula's Hip Strip, a favorite destination for both tourists & locals with a unique trendy collection of restaurants & shops - 100% locally owned and operated.

Walking distance to Downtown Missoula & Caras Park which host a variety of festivals & events attracting over half a million people each year

Just 5 minutes from The University of Montana Campus & Washington Grizzly Football Stadium attracting 11,000+ students per year & 25,000+ football fans per game.





PROPERTY DETAILS

GEOCODE:	04-2200-21-4-07-07-0000
ZONING:	C1-4/City of Missoula MT
LEGAL DESCRIPTION:	KNOWLES ADDITION # 2, S21, T13 N, R19 W, BLOCK 84, Lot 5
LOT SIZE:	.096 acres
TAX ID:	5952104
PROPERTY TAXES:	\$14,017.85
CITY SERVICES:	Water & Sewer
YEAR BUILT:	1905
IMPROVEMENTS:	New Membrane Roof approx 2005 Alley Exterior Brick, Windows & Doors 2015
WALK/BIKE SCORE:	90 WALK / 100 BIKE
PUBLIC TRANSPORTATION:	6 Bus Stops on Multiple Routes within 3 minute walk (FREE CITY BUS) 10 minute walk to Downtown Transfer Center

MISSOULA DEMOGRAPHICS

	<u>COUNTY</u>	<u>CITY</u>
POPULATION (est 2022):	121,041	76,995
POPULATION GROWTH SINCE 2010:	10%	13%
MEDIAN HOUSEHOLD INCOME:	\$65,682	\$54,423
MEDIAN AGE:	37	40
MEAN TRAVEL TIME TO WORK:	17.8 minutes	15.5 minutes

ZONING MAP



ZONING DISTRICT

C1-4 / City of Missoula - Neighborhood Commercial

ZONING REGULATIONS:

https://library.municode.com/mt/missoula/codes/municipal_code

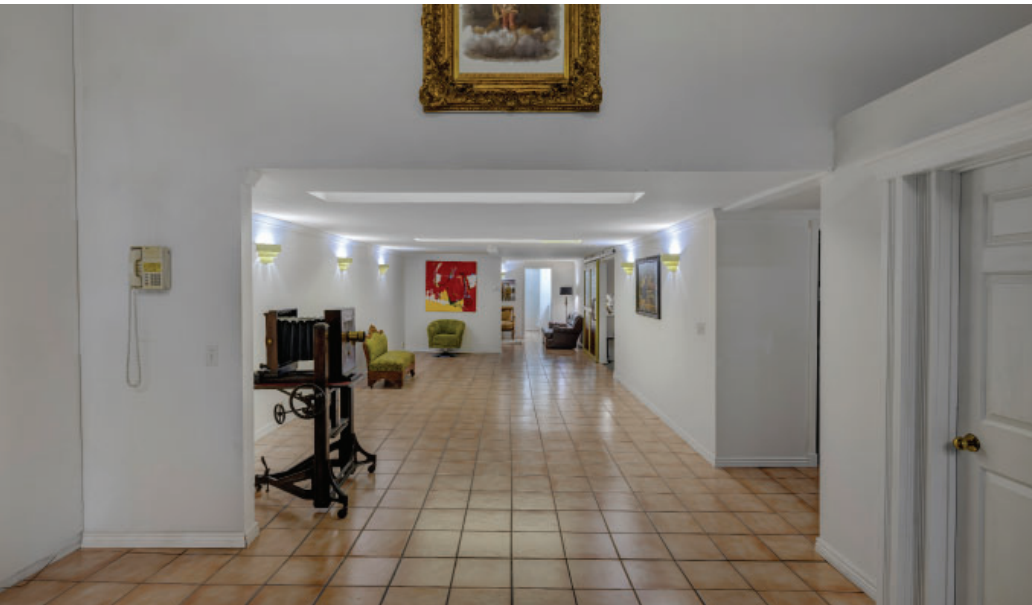
CITY OF MISSOULA WEBSITE:

<http://ci.missoula.mt.us/>



ENTRANCE LOBBY / STUDIO SPACE





Katie L. Ward

REAL ESTATE

Katie L. Ward

Managing Broker

Commercial & Development Specialist



406.596.4000



katie@katieward.com



katieward.com

DISCLAIMER

All information contained herein is derived from sources deemed reliable, however, it is not guaranteed by Katie L Ward LLC., Managing Brokers, Agents or Sellers. Offering is subject to error, omissions, prior sales, price change or withdrawal without notice and approval of purchase by Seller. We urge independent verification of each and every item submitted, to the satisfaction of any prospective purchaser.