



THE NEW FACE OF MODERN INDUSTRIAL



STATE-OF-THE-ART
INDUSTRIAL BUILDINGS
TOTALING **OVER 200,000 SF**

OWNED & MANAGED BY



PANATTONI®



PRIME SITE
IN LAKE COUNTY



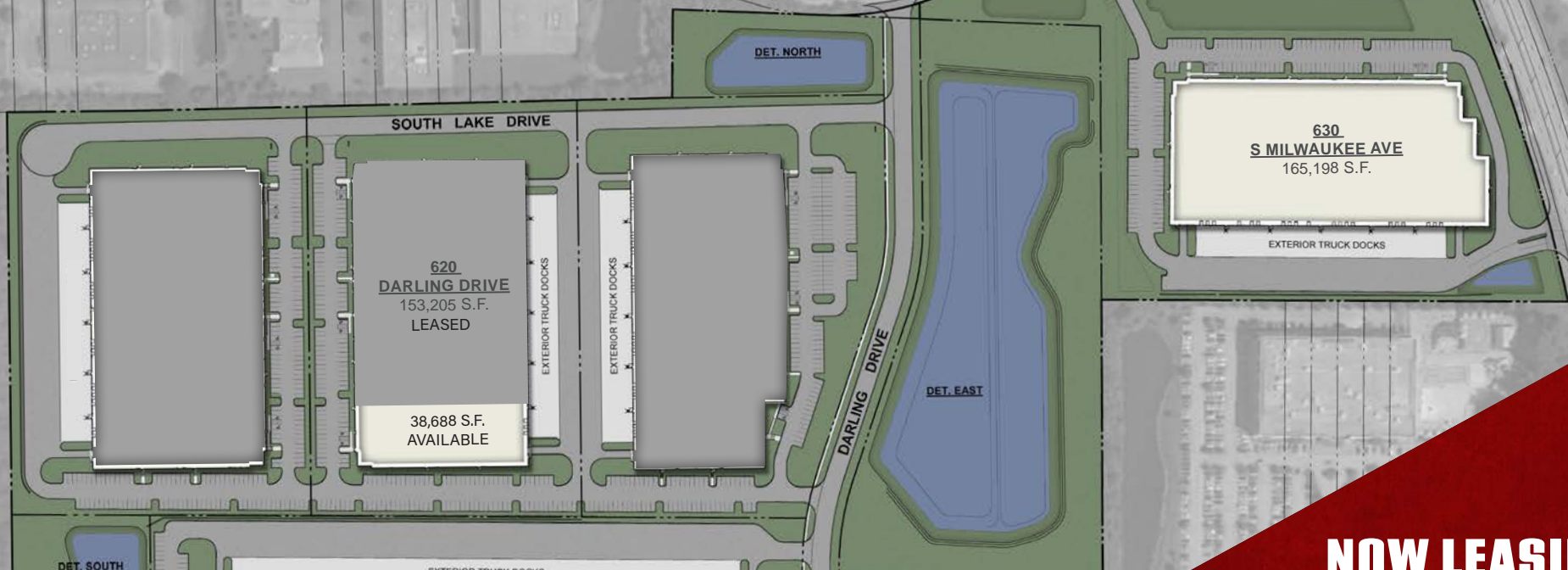
±200,000 SF
AVAILABLE



32'
CLEAR HEIGHT



HIGH-IMAGE
INDUSTRIAL BUILDINGS

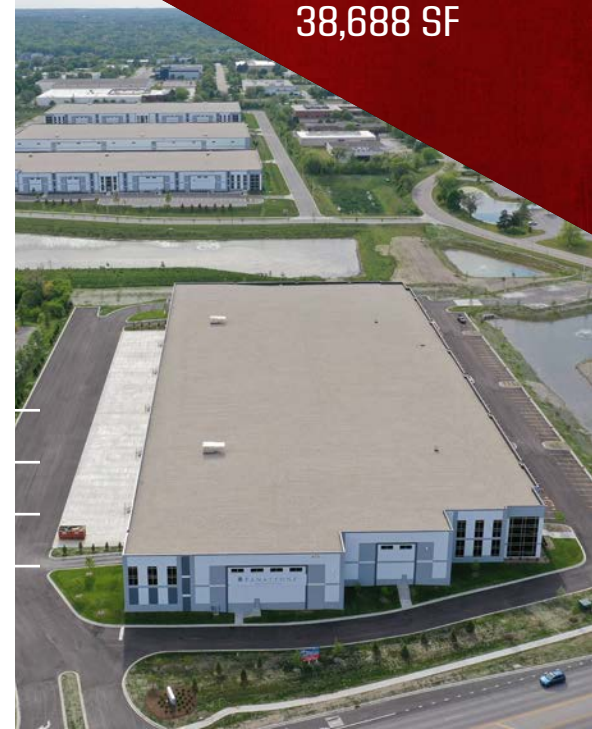


620 DARLING DRIVE

| | | | |
|-----------------|-------------------|-------------------------|------------------|
| BUILDING SIZE: | 191,893 SF | CAR PARKING: | 46 SPACES |
| AVAILABLE: | 38,688 SF | EXTERIOR LOADING DOCKS: | 3 |
| CEILING HEIGHT: | 32' CLEAR | | |

630 S MILWAUKEE AVENUE

| | | | |
|------------------------|---------------------|-------------------------|------------------------|
| BUILDING SIZE: | 165,198 SF | CEILING HEIGHT: | 32' CLEAR |
| AVAILABLE (DIVISIBLE): | 165,198 SF | CAR PARKING: | 199 SPACES |
| SITE SIZE: | ±13.27 ACRES | EXTERIOR LOADING DOCKS: | 16 (EXPANDABLE) |
| | | DRIVE-IN DOORS: | 2 |





3.5 MILES
TO FOUR-WAY
INTERCHANGE ACCESS

**SOUTH LAKE
INDUSTRIAL CENTER**
VERNON HILLS, IL

**PRIME
LOCATION**



Access to two 4-way interchanges off I-94 via Half Day Road (Route 22) & Townline Road (Route 60)



Ideally located in southern Lake County with direct access to Milwaukee Ave. (Rt. 21) frontage



Surrounded by local amenities and situated within Vernon Hills' world-class Corporate Woods Business Park

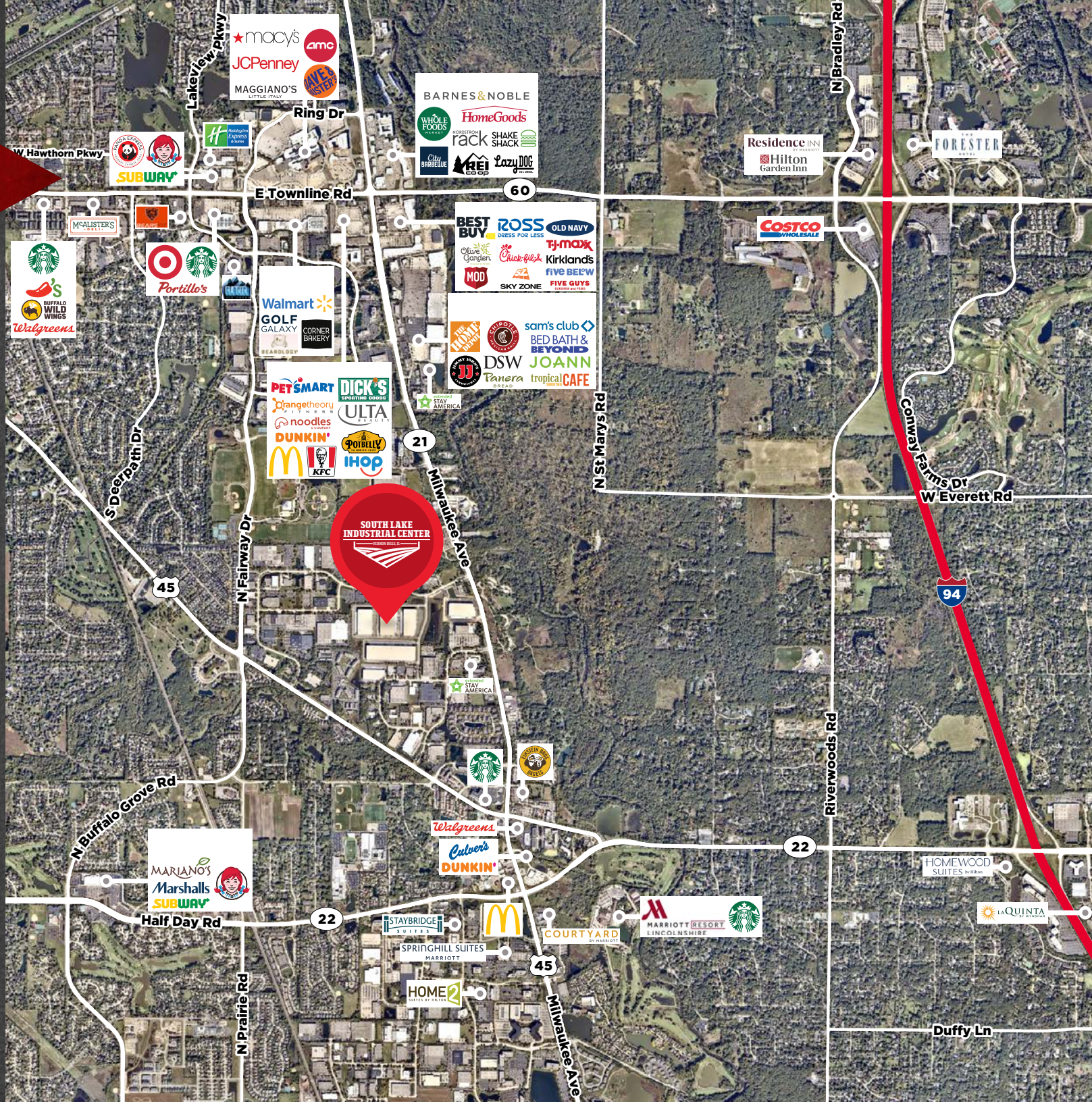
AREA AMENITIES

PARK AMENITIES

- EXPANSIVE FITNESS CENTER
- EXTENDED STAY HOTEL
- MARKET & DELI OUTLET STORE

DRIVE-TIME STATS

- 8 MINUTES (3.5 MILES)
I-94 4-WAY INTERCHANGE
- 16 MINUTES (9 MILES)
IL-ROUTE 53
- 22 MINUTES (23 MILES)
WISCONSIN STATE LINE
- 25 MINUTES (21 MILES)
O'HARE INTERNATIONAL AIRPORT
- 50 MINUTES (35 MILES)
DOWNTOWN CHICAGO



EMBRACE THE POWER OF MODERN INDUSTRIAL

[SOUTHLAKEINDUSTRIAL.COM](https://southlakeindustrial.com)



FOR MORE INFORMATION & LEASING:

BRETT KRONER

Vice Chair

+1 847 720 1367
brett.kroner@cushwake.com

KEITH PURITZ

Vice Chair

+1 847 720 1366
keith.puritz@cushwake.com

ERIC FISCHER

Executive Managing Director

+1 847 720 1369
eric.fischer@cushwake.com

STEVE STONE

Managing Director

+1 847 720 1364
steve.stone@cushwake.com

MARC SAMUELS

Director

+1 847 720 1368
marc.samuels@cushwake.com



OWNED & MANAGED BY



PANATTONI®

©2023 Cushman & Wakefield. All rights reserved. The information contained in this communication is strictly confidential. This information has been obtained from sources believed to be reliable but has not been verified. NO WARRANTY OR REPRESENTATION, EXPRESS OR IMPLIED, IS MADE AS TO THE CONDITION OF THE PROPERTY (OR PROPERTIES) REFERENCED HEREIN OR AS TO THE ACCURACY OR COMPLETENESS OF THE INFORMATION CONTAINED HEREIN, AND SAME IS SUBMITTED SUBJECT TO ERRORS, OMISSIONS, CHANGE OF PRICE, RENTAL OR OTHER CONDITIONS, WITHDRAWAL WITHOUT NOTICE, AND TO ANY SPECIAL LISTING CONDITIONS IMPOSED BY THE PROPERTY OWNER(S). ANY PROJECTIONS, OPINIONS OR ESTIMATES ARE SUBJECT TO UNCERTAINTY AND DO NOT SIGNIFY CURRENT OR FUTURE PROPERTY PERFORMANCE.