



COMMERCIAL & RESIDENTIAL  
MANAGEMENT GROUP

SPACE FOR LEASE

# HAWTHORNE OFFICE SPACE

712 SE HAWTHORNE BLVD PORTLAND, OR 97232

3 MTHS  
RENT  
FREE  
WITH  
3+ YR  
LEASE



**CALL OR EMAIL  
FOR A TOUR!**

**SPACE AVAILABLE:**

- SUITE 200 - 1,764 RSF
- SUITE 201 - 1,764 RSF
- STE 200/201 - 3,179 RSF



**SCOTT WEIGEL | BROKER | SCOTTW@CRMGCO.COM | (503) 802-2538**  
**JILL KEOPPEL | PRINCIPAL BROKER | JILLK@CRMGCO.COM | (971) 353-2079**  
WWW.CRMGCO.COM | 9400 SW BARNES RD, PORTLAND, OR 97225

The information in this package was gathered from sources deemed reliable, however C&R Management Group makes no representation or warranty of the accuracy of the information. Any buyer or tenant considering purchase or lease of this property should confirm any and all information relied upon in making the decision to purchase or lease prior to finalizing the transaction and bears the risk of all inaccuracies.



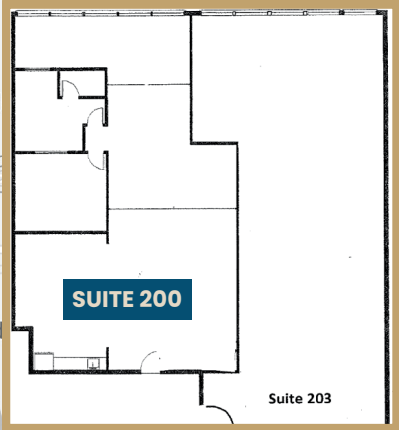
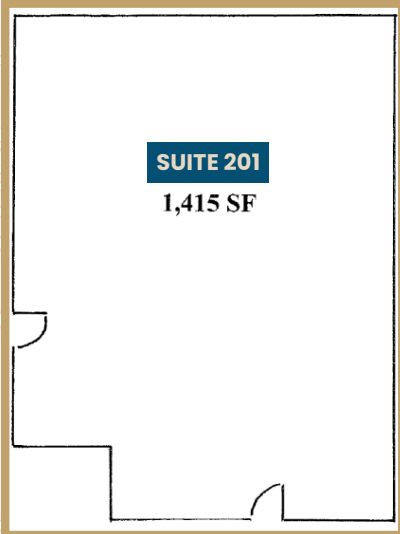
**\$12.00/SF  
ANNUAL, GROSS LEASE**

# HAWTHORNE OFFICE SPACE

712 SE HAWTHORNE BLVD PORTLAND, OR 97232



**YOUR SPACE HERE!**



- Ste. 200 has north facing windows
  - Ste. 201 has large conference room
  - Both suites have kitchenette
  - 2nd floor suites
  - Service Elevator only
  - Two bathrooms on 2nd floor
  - ADA bathroom on 1st floor
- Hawthorne Electric was the first home of Tektronix from 1947-1951.



**SCOTT WEIGEL | BROKER | SCOTTW@CRMGCO.COM | (503) 802-2538**  
**JILL KEOPPEL | PRINCIPAL BROKER | JILLK@CRMGCO.COM | (971) 353-2079**  
**WWW.CRMGCO.COM | 9400 SW BARNES RD, PORTLAND, OR 97225**

The information in this package was gathered from sources deemed reliable, however C&R Management Group makes no representation or warranty of the accuracy of the information. Any buyer or tenant considering purchase or lease of this property should confirm any and all information relied upon in making the decision to purchase or lease prior to finalizing the transaction and bears the risk of all inaccuracies.