



**CUSHMAN &
WAKEFIELD**

12255 ENSIGN AVE N

CHAMPLIN, MN

16,083 SF AVAILABLE FOR LEASE

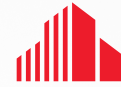
- FANTASTIC LOCATION IN CHAMPLIN OFF HWY 169
- 100% AIR-CONDITIONED
- AVAILABLE NOW
- DOCK AND DRIVE IN LOADING

3500 American Blvd W
Suite 200
Minneapolis, MN 55431 | USA
Main +1 952 831 1000
[**cushmanwakefield.com**](http://cushmanwakefield.com)

FOR LEASE

12255 Ensign Ave N

Champlin, MN



CUSHMAN &
WAKEFIELD



PROPERTY HIGHLIGHTS

Available 3,500 SF Office
 12,583 SF Warehouse
 16,083 SF Total

Zoning I-1 Industrial

Loading 2 Docks
 1 Drive-in

Clear Height 15'

HVAC Heat in warehouse
 Fully A/C'd office

Power TBD

Lease Rate \$12.50 PSF Office
 \$7.00 PSF Warehouse

Tax & CAM \$3.03 PSF TAX
 \$1.97 PSF CAM
 \$5.00 PSF TOTAL



LEASING CONTACTS

HUDSON BROTHEN
Executive Director
+1 952 893 8261
HUDSON.BROTHEN@CUSHWAKE.COM

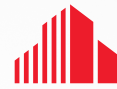
DANNY MCNAMARA
Senior Director
+1 952 893 8895
DANNY.MCNAMARA@CUSHWAKE.COM

3500 American Blvd W, Suite 200
Minneapolis, MN 55431 | USA
Main +1 952 831 1000
CUSHMANWAKEFIELD.COM

FOR LEASE

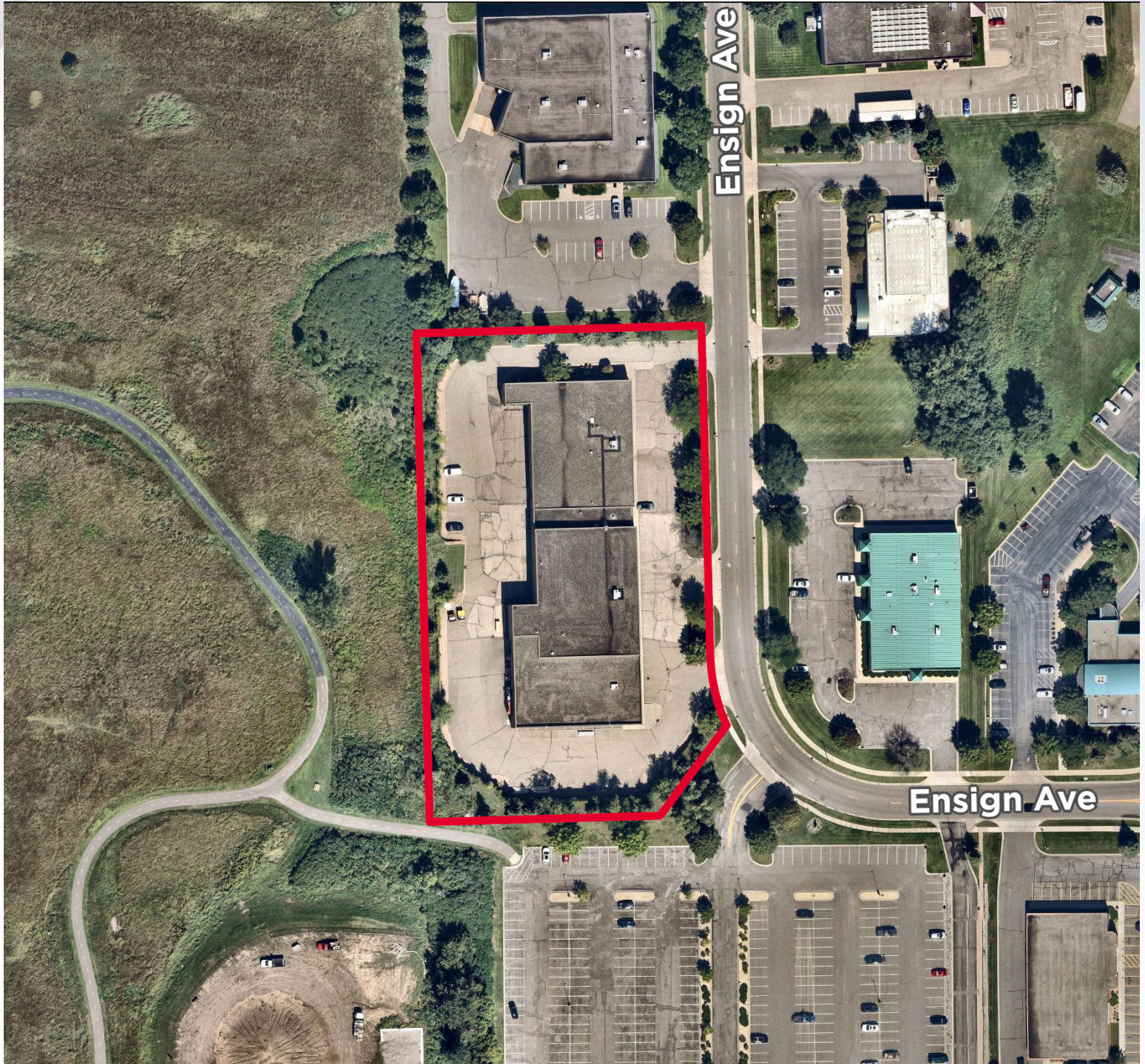
12255 Ensign Ave N

Champlin, MN



CUSHMAN &
WAKEFIELD

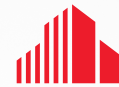
AERIAL



FOR LEASE

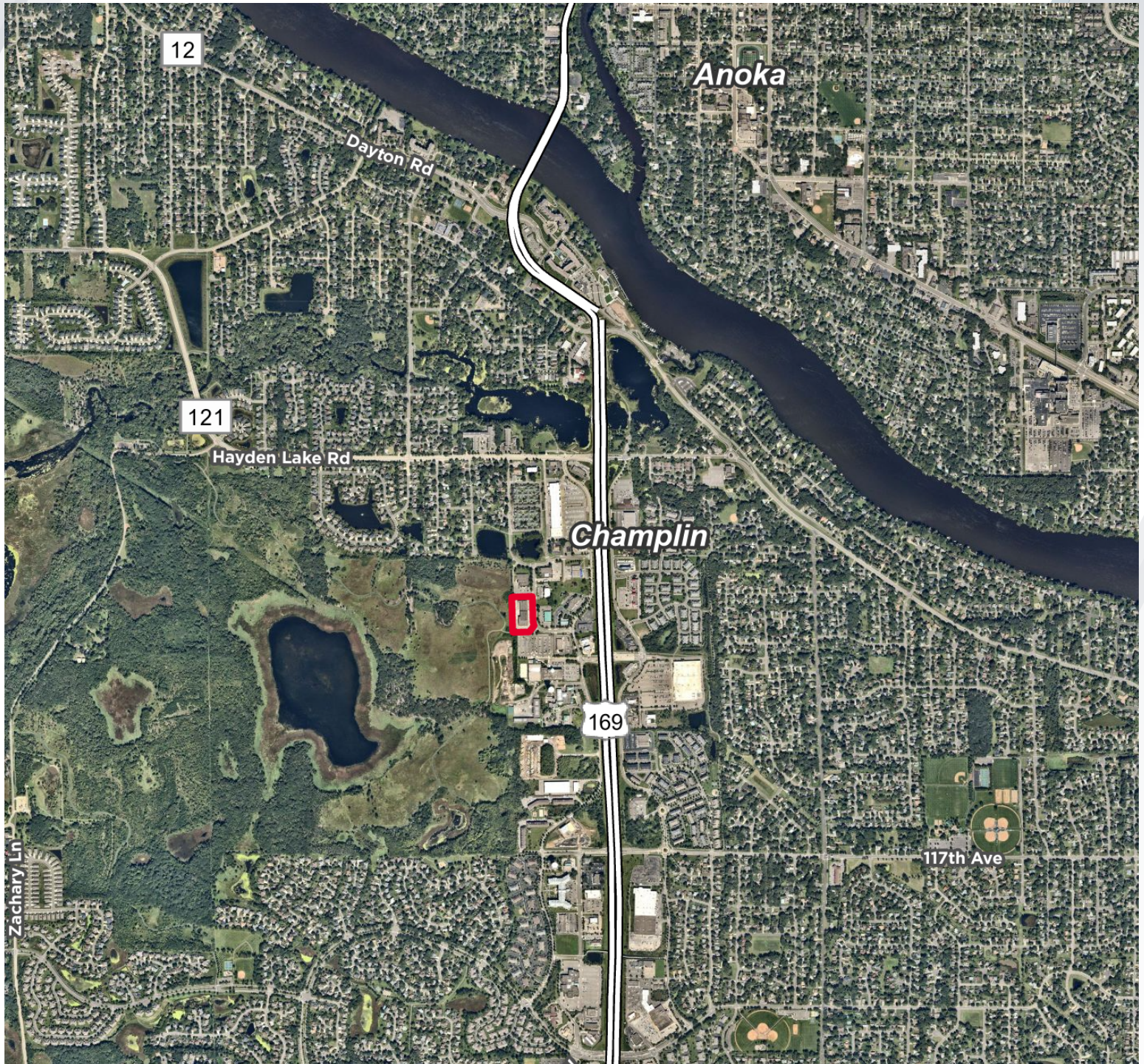
12255 Ensign Ave N

Champlin, MN



CUSHMAN &
WAKEFIELD

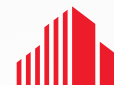
AERIAL



FOR LEASE

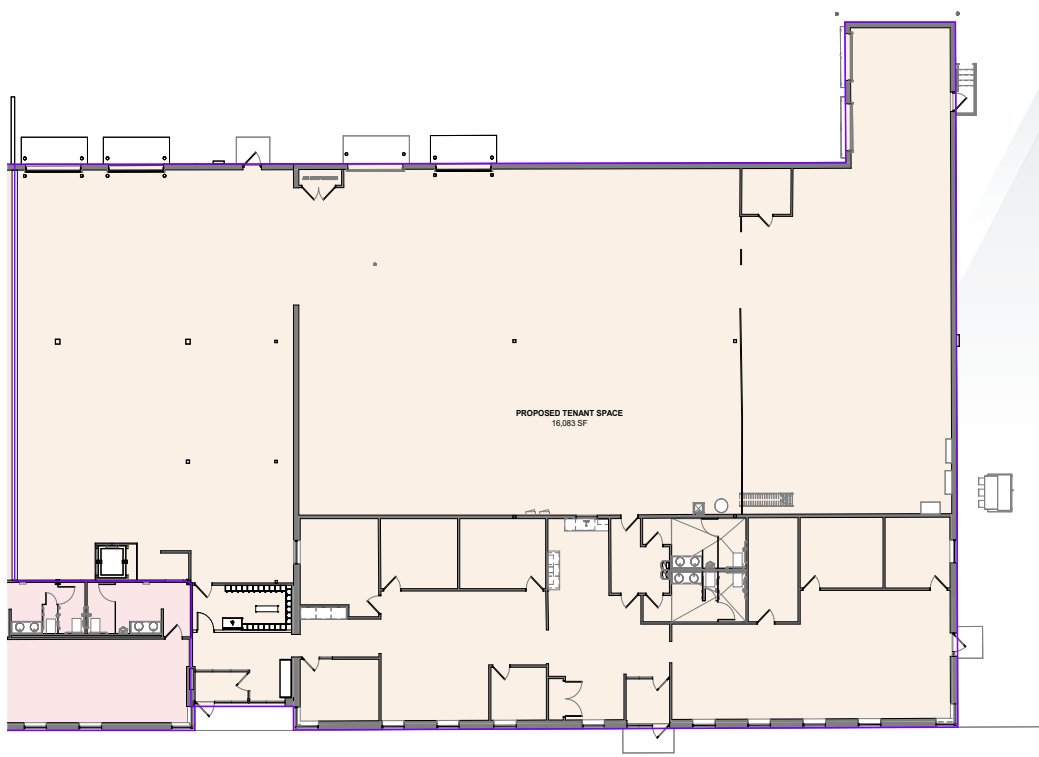
12255 Ensign Ave N

Champlin, MN



**CUSHMAN &
WAKEFIELD**

FLOOR PLAN



3500 American Blvd W, Suite 200
Minneapolis, MN 55431 | USA
Main +1 952 831 1000
cushmanwakefield.com

LEASING CONTACTS

HUDSON BROTHEN
Executive Director

+1 952 893 8261

HUDSON.BROTHEN@CUSHWAKE.COM

DANNY MCNAMARA
Senior Director

+1 952 893 8895

DANNY.MCNAMARA@CUSHWAKE.COM

©2025 Cushman & Wakefield. All rights reserved. The information contained in this communication is strictly confidential. This information has been obtained from sources believed to be reliable but has not been verified. No warranty or representation, express or implied, is made as to the condition of the property (or properties) referenced herein or as to the accuracy or completeness of the information contained herein, and same is submitted subject to errors, omissions, change of price, rental or other conditions, withdrawal without notice, and to any special listing conditions imposed by the property owner(s). Any projections, opinions or estimates are subject to uncertainty and do not signify current or future property performance.