



COMMERCIAL



FOR SALE

32.68 ACRES OF PRIME
COMMERCIAL LAND

1230 SR 129
Batesville, IN 47006

Prime commercial land offering 32.68 acres, strategically located at the intersection of SR-46, SR-129, and Coonhunters Rd. This highly visible property boasts excellent road frontage along SR-46 and SR-129, making it ideal for development. Situated near the YMCA, walking trails, medical offices, and Baxter Manufacturing, this site is surrounded by a thriving business community. The proximity to restaurants, shops, and other amenities further enhances its appeal. Whether you're planning retail, office, or mixed-use development, this versatile parcel presents a unique opportunity in a high-traffic area with growing demand. Don't miss out on this prime location!

PURCHASE PRICE:
\$1,200,000.00

Land Size: 32.68 Acres

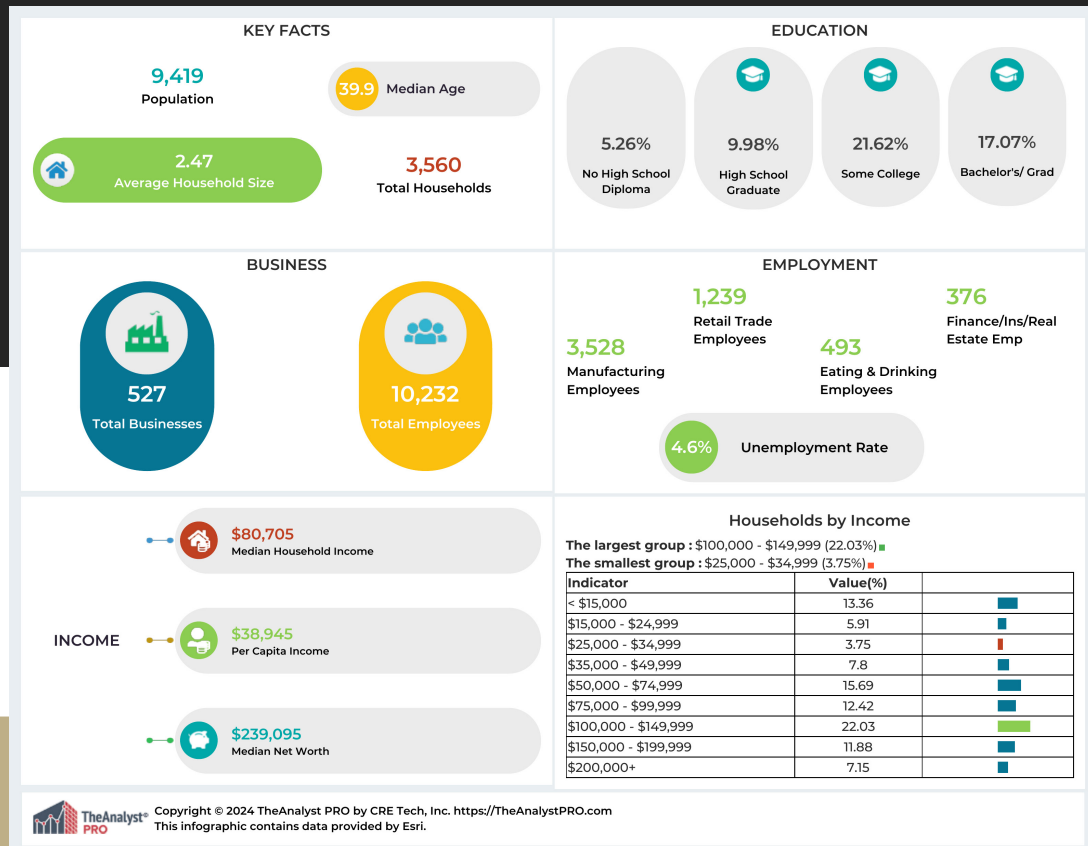
Contact:

317.339.6972

JENNY LAUGHNER

COMMERCIAL AGENT

jenny@c21scheetz.com



Contact:

317.339.6972

JENNY LAUGHNER

COMMERCIAL AGENT

jenny@c21scheetz.com

