

WESTLAKE COMMERCE CENTER

Westlake, Florida 33470

WESTLAKE'S NEWEST **CLASS A** OFFICE/WAREHOUSE DEVELOPMENT IN PALM BEACH COUNTY'S NEWEST, NICEST, AND FASTEST GROWING AFFORDABLE WESTERN COMMUNITY



WESTLAKE COMMERCE CENTER

4851 Seminole Pratt Whitney Road

±17.4 Acres of
Light Industrial
Land

Available for Build to
Suit For Sale or Lease
From +/-80,000 sf to
+/-275,000 sf

PROPERTY HIGHLIGHTS

- » Proposed Brand New Class A Industrial Development
- » Excellent Access to Palm Beach County's Only East/West Expressway.
- » Westlake is the #1 Top Selling Community in South Florida in its Price Range
- » Seminole Pratt & Whitney Road Traffic has Surged with Projections over 70,000 Vehicle Drive By Per Day
- » Excellent Proximity to Quality Labor Force
- » Proximity to Every Necessary Amenity

SALE PRICE - CALL FOR DETAILS

LEASE RATE - CALL FOR DETAILS

ROBERT SMITH

Executive Vice President
+1 561 707 5558
robert.c.smith@cbre.com

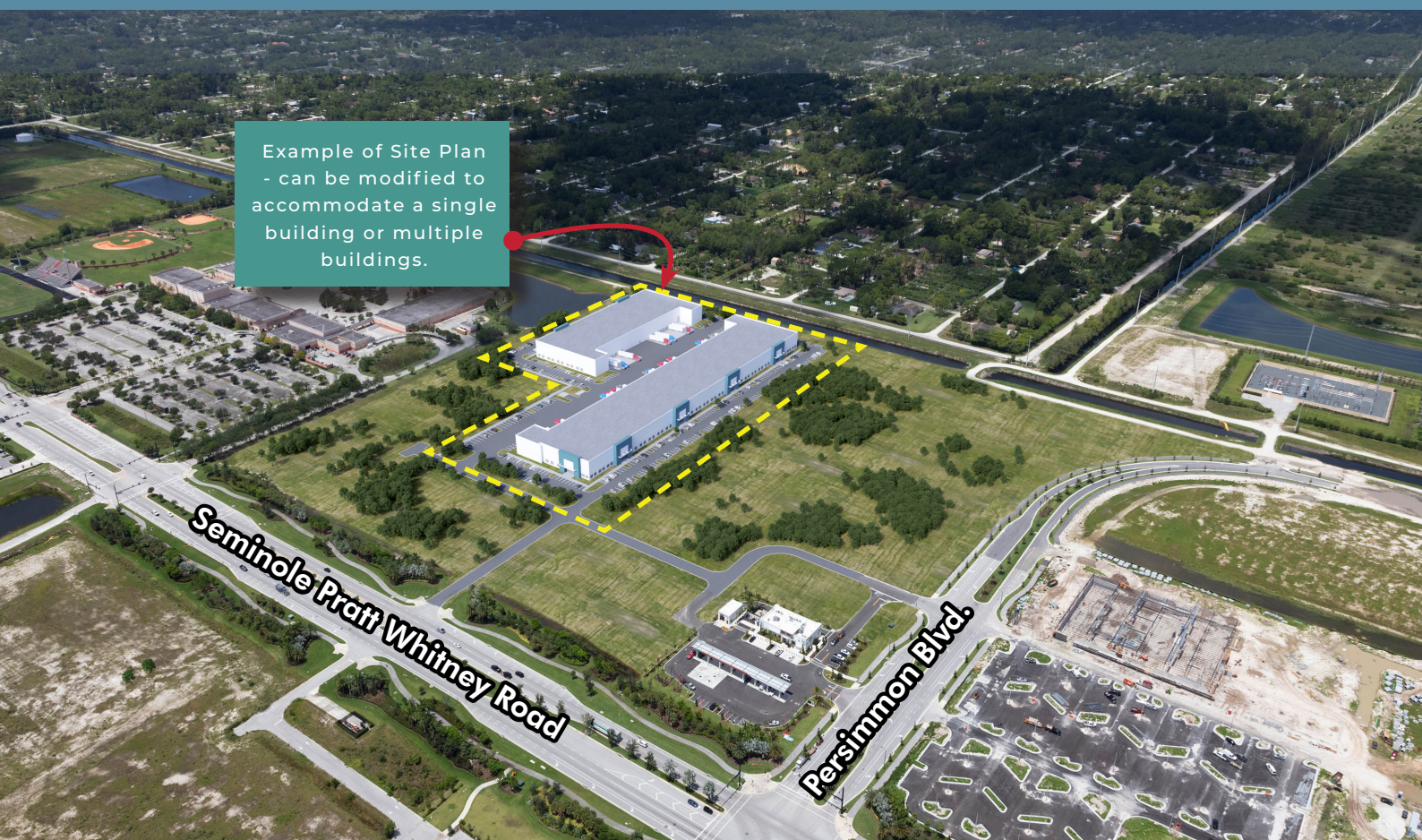
KIRK NELSON

Executive Vice President
+1 561 716 9936
kirk.nelson@cbre.com

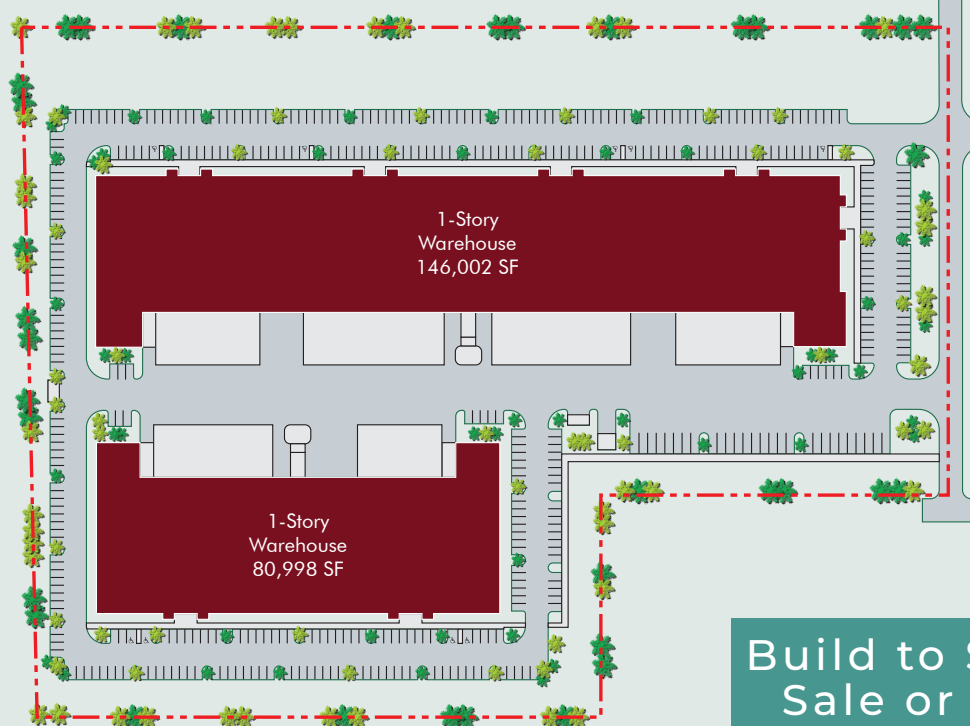
CBRE

WESTLAKE COMMERCE CENTER

Westlake, Florida 33470



SITE PLAN PERMIT APPROVED



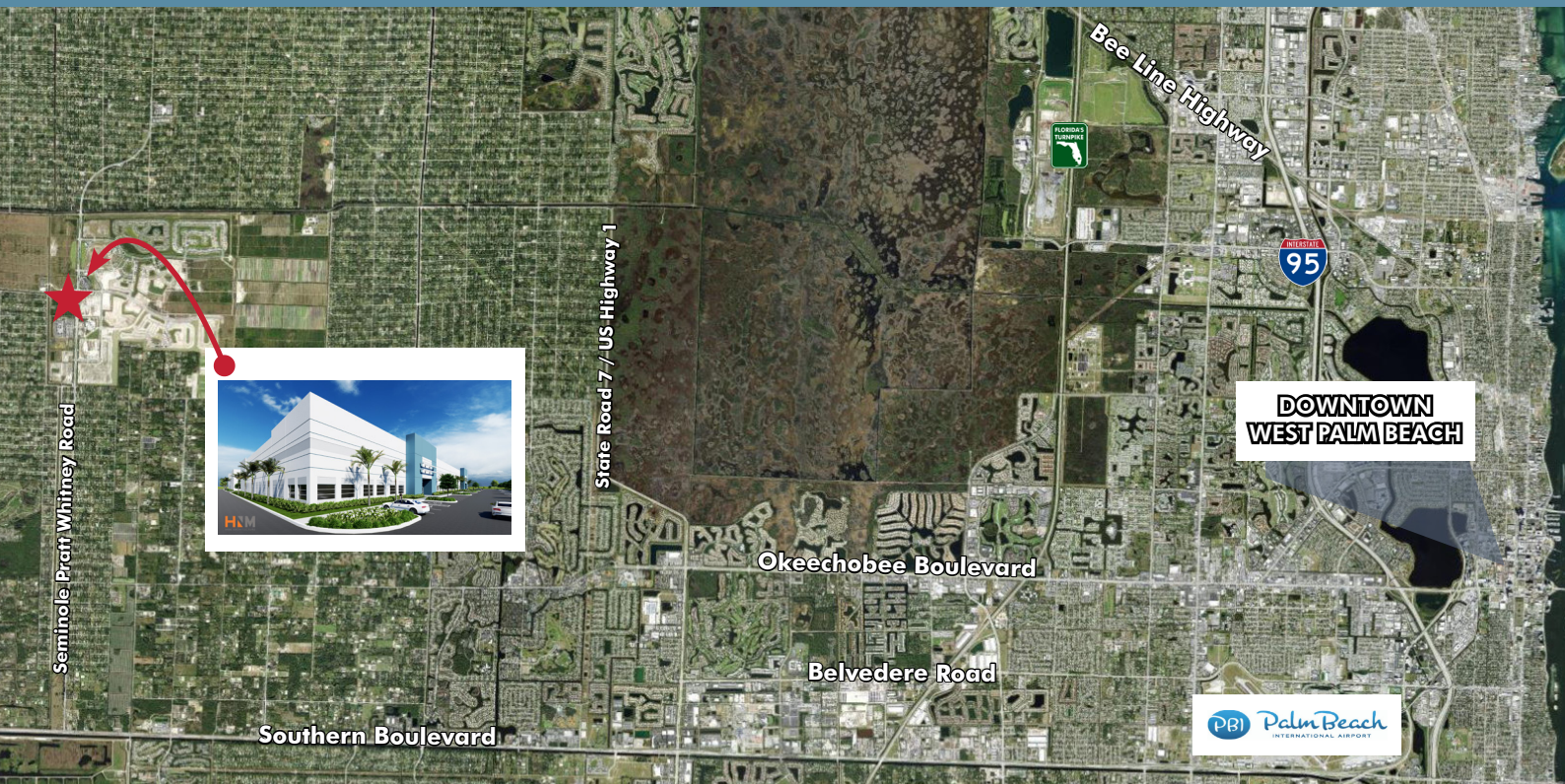
Existing approved Site Plan can be modified to accommodate the needs of a Buyer or Tenant.

Build to Suit for
Sale or Lease

SEMINOLE PRATT WHITNEY RD

CBRE

LOCATIONAL AERIAL



DRIVE DISTANCES

14.4 Miles to



19.6 Miles to



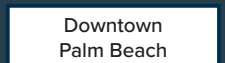
19.8 Miles to



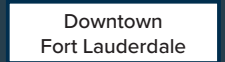
21.9 Miles to



24.6 Miles to



59.7 Miles to



64.5 Miles to



LEASING BY:

ROBERT SMITH

Executive Vice President
+1 561 707 5558
robert.c.smith@cbre.com

KIRK NELSON

Executive Vice President
+1 561 716 9936
kirk.nelson@cbre.com

DEVELOPED BY:



Mitchell Property Realty, Inc.



RIDGELINE

PROPERTY GROUP

Integrity | Experience | Performance

CBRE