



2100 South Industrial

4250 W. 2100 S., SALT LAKE CITY UTAH, 84104

For Lease

Property Highlights

- 9,792 Total Available SF
 - 1,000 SF Office
 - 8,792 SF Warehouse
- One (1) dock high door (9'x10') equipped with bumpers and EOD leveler
- One (1) ground level (12'x14')
- Clear height 25'
- 9 Parking Stalls
- 225 amps / 208/120V / 3-Phase
- Sprinkler System: Wet Sprinklered
- Warehouse has NO columns
- Concrete Tilt-Up Construction
- Excellent Exposure to Highway 201 and 2100 South

For information, please contact:

Jeff Heaton, SIOR

Executive Managing Director

t 801-578-5539

jeff.heaton@nmrk.com

Eli Priest

Senior Managing Director

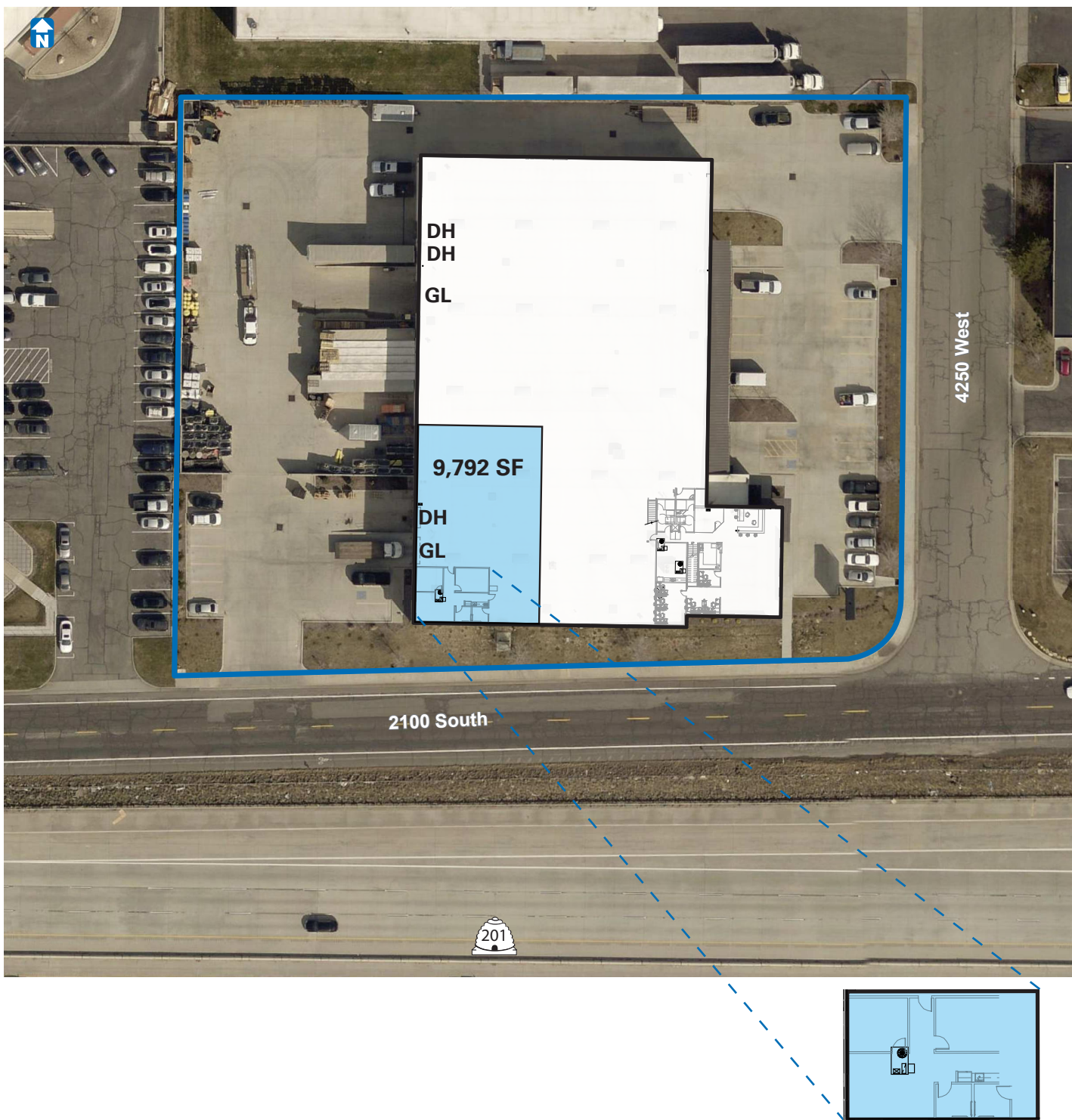
t 801-746-4746

eli.priest@nmrk.com

nmrk.com

NEWMARK

The information contained herein has been obtained from sources deemed reliable but has not been verified and no guarantee, warranty or representation, either express or implied, is made with respect to such information. Terms of sale or lease and availability are subject to change or withdrawal without notice.



For information, please contact:

Jeff Heaton, SIOR

Executive Managing Director

t 801-578-5539

jeff.heaton@nmrk.com

Eli Priest

Senior Managing Director

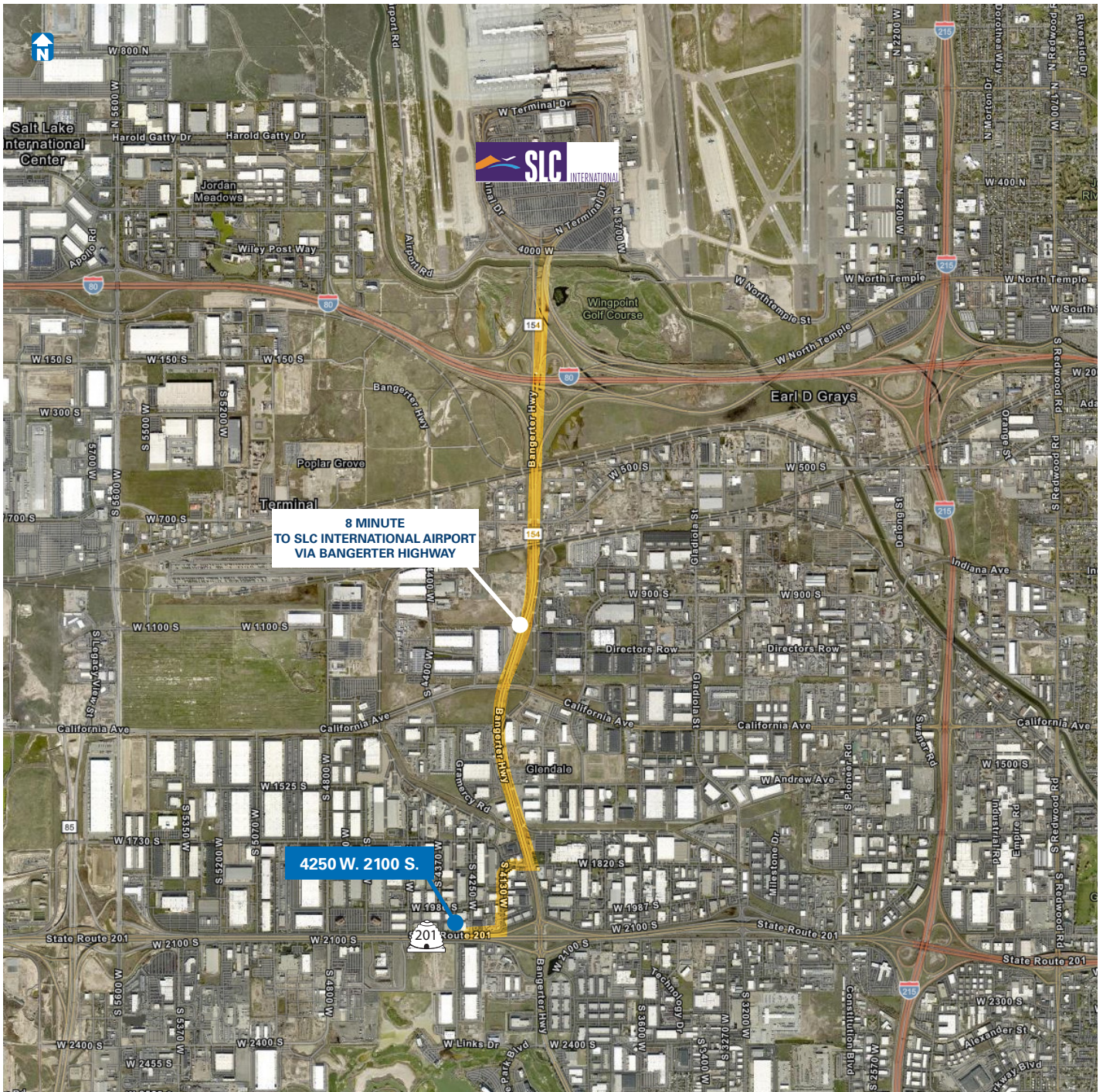
t 801-746-4746

eli.priest@nmrk.com

nmrk.com

NEWMARK

The information contained herein has been obtained from sources deemed reliable but has not been verified and no guarantee, warranty or representation, either express or implied, is made with respect to such information. Terms of sale or lease and availability are subject to change or withdrawal without notice.



For information, please contact:

Jeff Heaton, SIOR

Executive Managing Director
 t 801-578-5539
 jeff.heaton@nmrk.com

Eli Priest

Senior Managing Director
 t 801-746-4746
 eli.priest@nmrk.com

nmrk.com



The information contained herein has been obtained from sources deemed reliable but has not been verified and no guarantee, warranty or representation, either express or implied, is made with respect to such information. Terms of sale or lease and availability are subject to change or withdrawal without notice.