

RIVERTON BUILDING

28 VERNON STREET BRATTLEBORO, VT 05301



Get inspired by the best views in Brattleboro! The Riverton Building is situated in the heart of the city with picturesque views of the Connecticut River, Wantastiquet Mountain and historic downtown.

Join our diverse tenant roster in one of the few remaining office spaces. Customizable configurations are available varying in size from 690 Sq. Ft. and up with prices ranging from \$20 - \$23 per Sq. Ft.

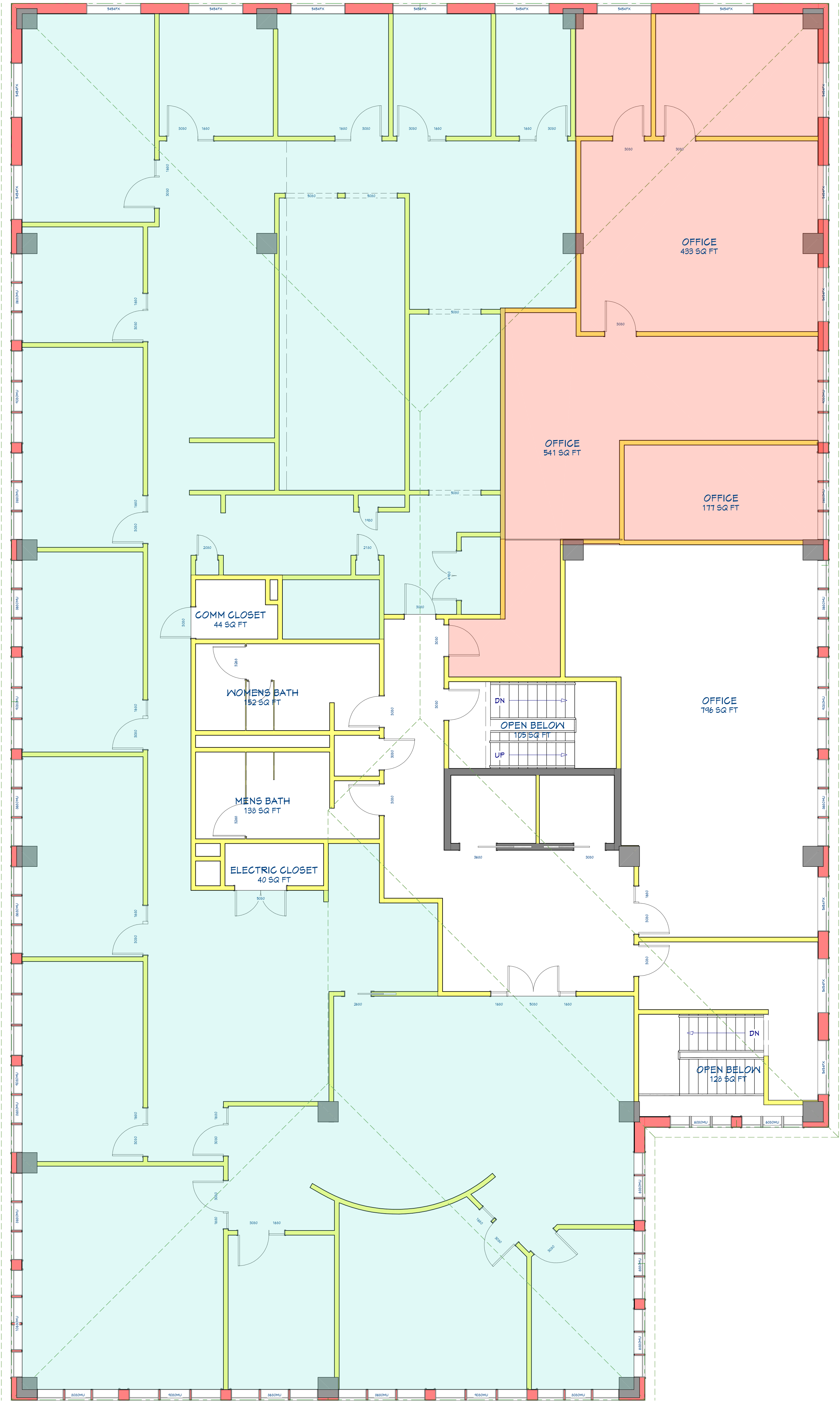
Tenants enjoy included amenities such as:

- Heating/ Cooling
- Electricity
- Water
- 24 hour Accessibility
- Shared Bathrooms on Each Floor
- Elevator Access
- Spacious Parking Lot
- Wifi in Common Areas



Contact us:
Email: info@iiempire.com
Phone: 802-490-4334

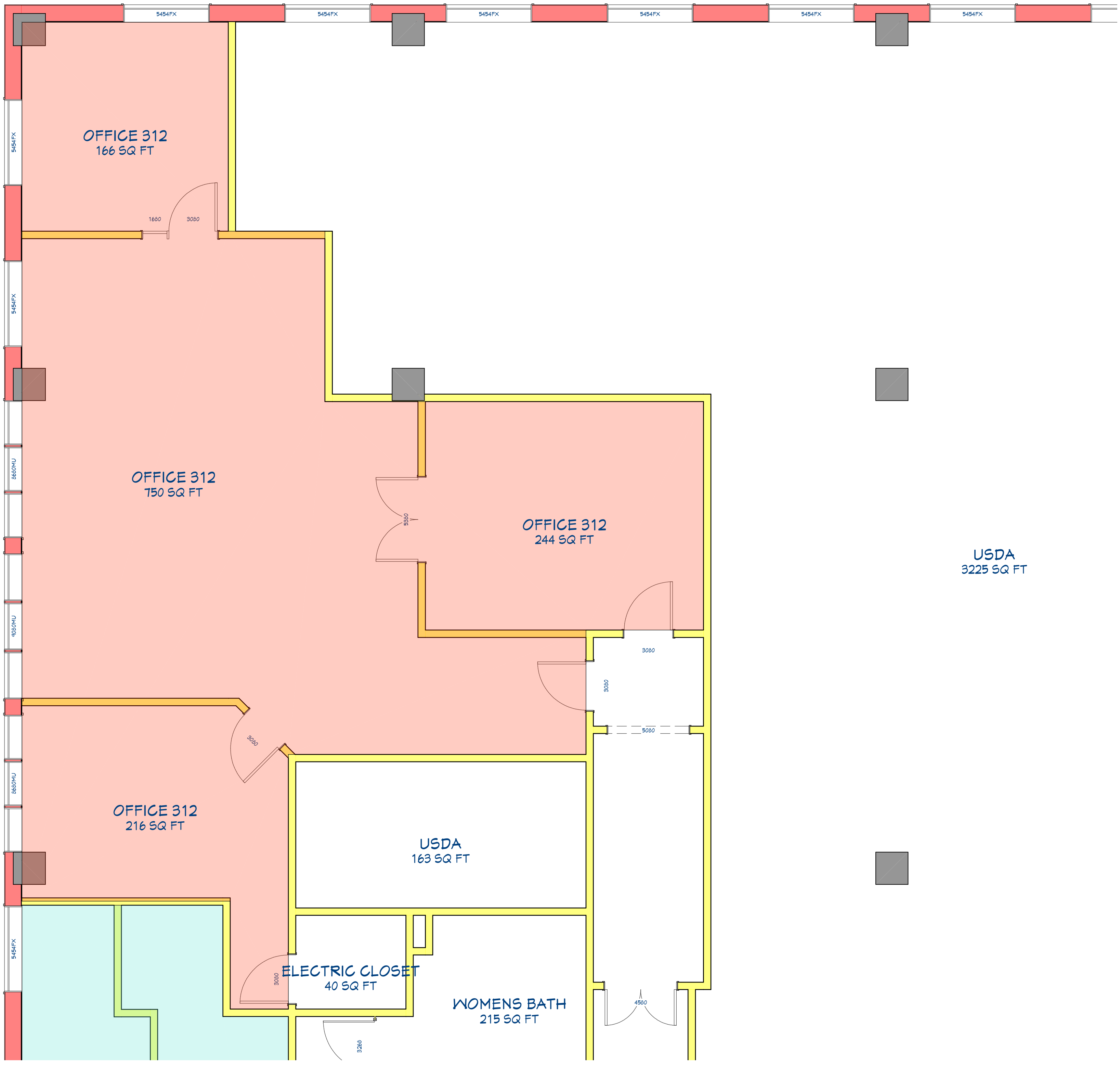




6160 SF

1538 SF

VACANT SPACE 1,407 SQ FT



USDA
3225 SQ FT

3rd Floor Bridge Offices

Can be rented separate or combined.

