



**1114 E Pike Street,
Suite 200,
Seattle, WA**

PRIME OFFICE SPACE AVAILABLE
IN THE HEART OF CAP HILL

**12th & Pike
Building**

OFFICE SPACE
FOR LEASE

PROPERTY DETAILS

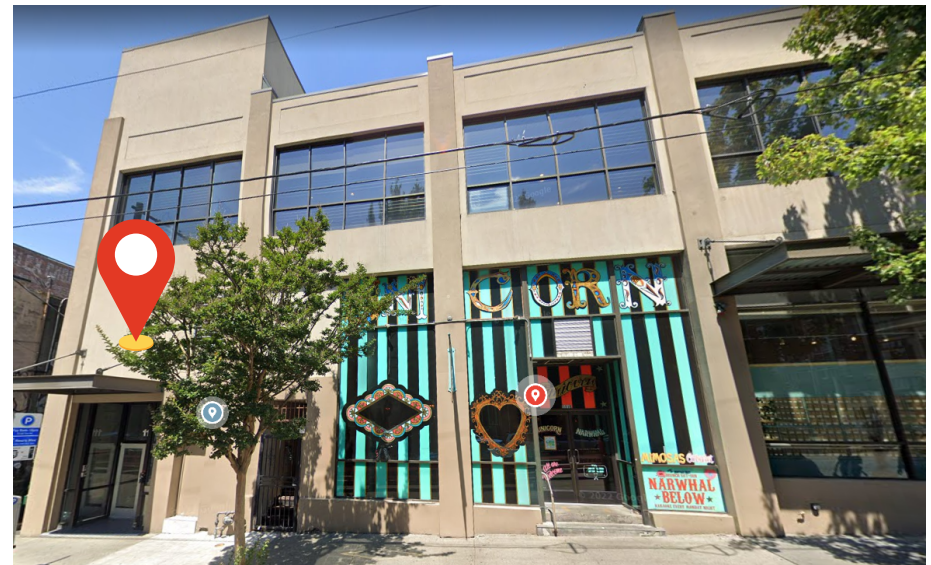
OFFICE 2,581 SF

**SUITE 200
MEZZANINE LEVEL**

**TWO ENTRANCES
(PIKE & 12TH)**

AVAILABLE NOW

NNN LEASE



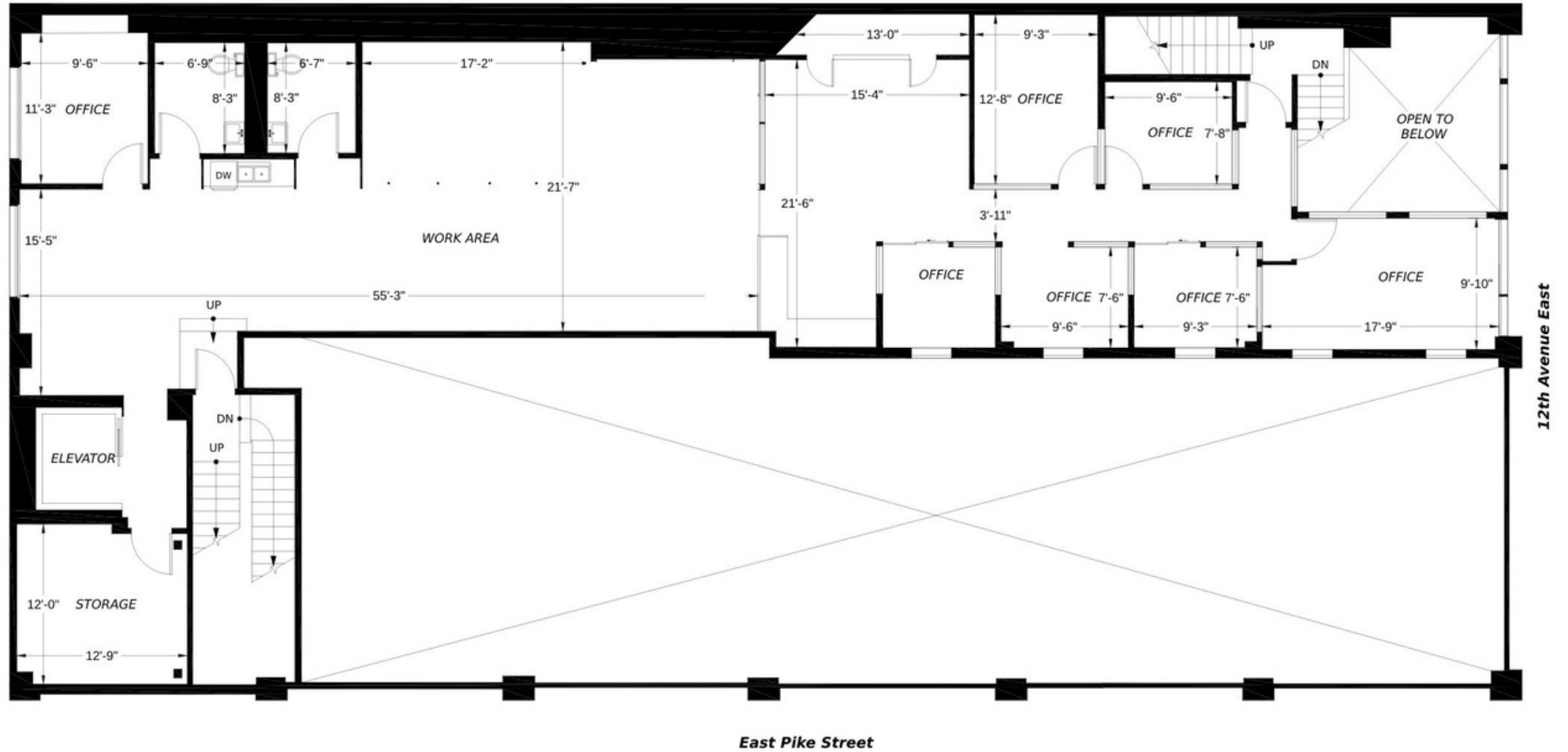
DETAILS



Prime Capitol Hill location on the corner of 12th & Pike. Located on the second floor mezzanine level. Loads of character, as building was a former car dealership building constructed in 1917. Now home to office, retail and restaurant space.

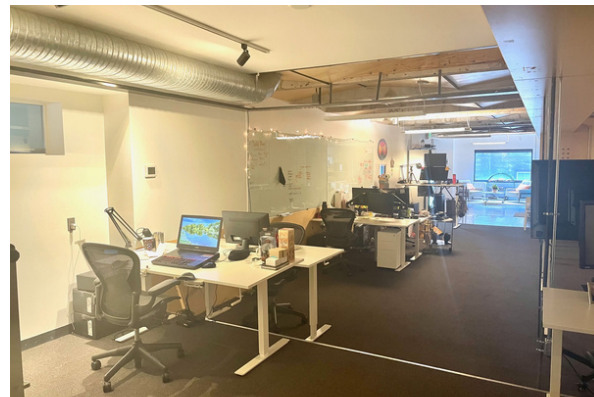
Building features 24 controlled access, air conditioning, bicycle storage, private office, partitioned offices, open floor plan, and conference rooms.

FLOOR PLAN



Architectural Firm Name

PHOTOS



PHOTOS



ACCESSIBILITY



Walk Score
100

Walker's Paradise

Daily errands do not require a car.

Transit Score
83

Excellent Transit

Transit is convenient for most trips.

Bike Score
90

Biker's Paradise

Daily errands can be accomplished on a bike.

Madrona

Madrona

FOR MORE
INFORMATION
PLEASE
CONTACT

ANDREA CURTIS

206.596.7972

ANDREAA@MADRONAREALESTATE.COM

BRAD AUGUSTINE

206.910.8123

BRADA@MADRONAREALESTATE.COM

