

4033 THIRD AVE

SAN DIEGO, CALIFORNIA 92101

HILLCREST MEDICAL CENTRE



OFFICE / MEDICAL FOR SUBLEASE

GARRETT FENA, PARTNER

SENIOR VICE PRESIDENT • LIC #01909122

(858) 458-3318 • gfena@voitco.com

Voit
REAL ESTATE SERVICES

FENA
COMMERCIAL
GROUP

HILLCREST MEDICAL CENTRE

PROJECT FEATURES



AVAILABILITY: ±1,669, SUITE 200



CLASS "A" MEDICAL OFFICE BUILDING



WALKING DISTANCE TO SCRIPS MERCY HOSPITAL



UNDERGROUND PARKING



WALKING DISTANCE TO RETAIL AMENITIES



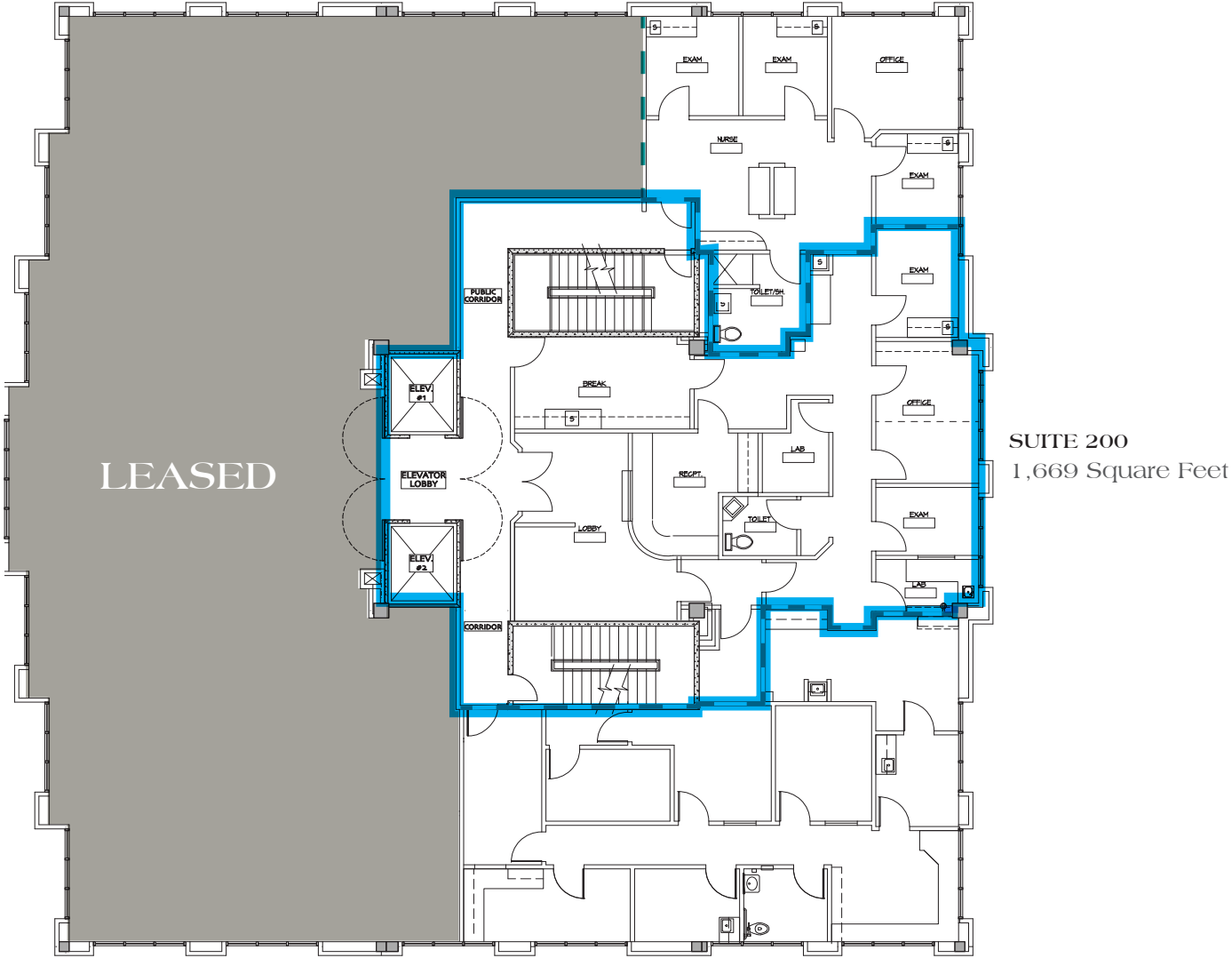
OTHER SPECIALTIES INCLUDED
ENT | ENDOSCOPY | LAB | NEUROLOGY

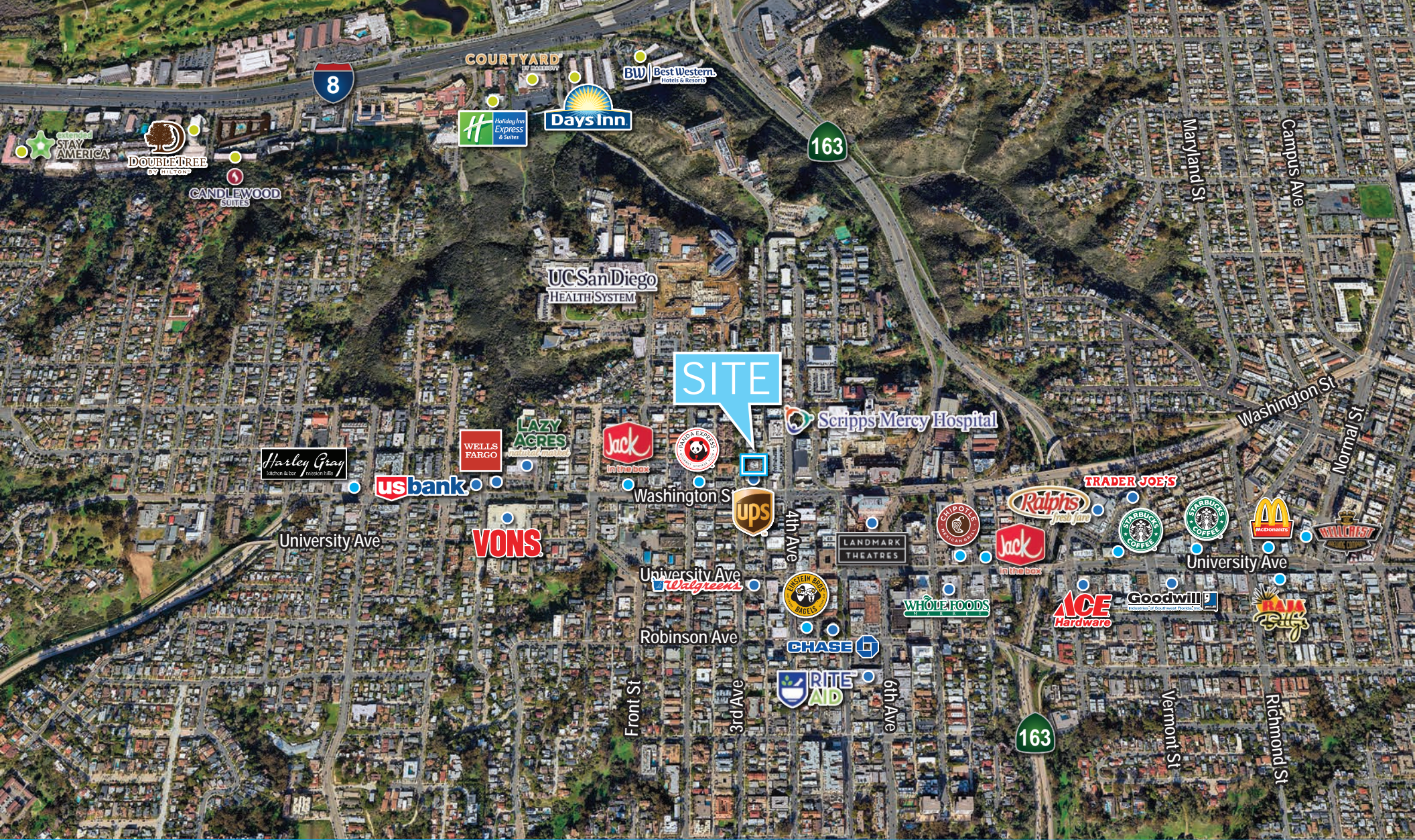
Sublease Rate: \$2.75 PSF (\$1.05 NNN)

Sublease Expires: August 31, 2026

HILLCREST MEDICAL CENTRE

FLOOR PLAN





GARRETT FENA, PARTNER

SENIOR VICE PRESIDENT • LIC #01909122

(858) 458-3318 • gfena@voitco.com

Voit

REAL ESTATE SERVICES

4180 La Jolla Village Drive, Suite 100, La Jolla, CA 92037 • 858.453.0505 • 858.408.3976 Fax • Lic #01991785 • www.VoitCo.com

Licensed as a Real Estate Salespersons by the DRE. ©2024 Voit Real Estate Services, Inc. All Rights Reserved. The information contained herein has been obtained from sources we deem reliable. While we have no reason to doubt its accuracy, we do not guarantee it.