

FOR LEASE

2950 NW YEON AVE.
PORTLAND, OR

INDUSTRIAL

Only \$0.60/SF/Mo.

Site

19,620 SF
(INCLUDES 5,392 SF OF
OFFICE/SHOWROOM)

ASKING RENT
FIRST YEAR:

\$11,772
+ NNN'S

CONTACT
SCOTT WRIGHT
503-753-5099
scott@wrightcommercial.com



809 N. RUSSELL STREET SUITE 201
PORTLAND, OR 97227
503-335-3300
wrightcommercial.com

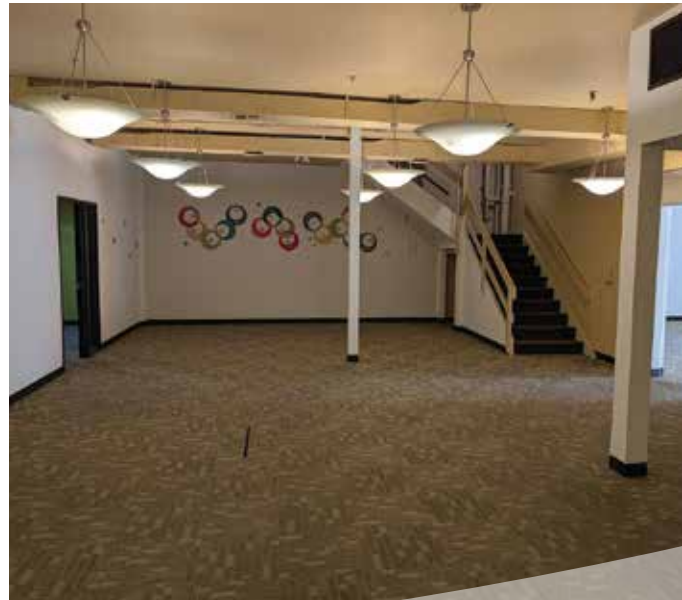
INDUSTRIAL BUILDING FOR LEASE

2950 NW YEON AVE. | PORTLAND, OR



PROPERTY HIGHLIGHTS

- 22' CLEAR HEIGHT
- TWO (2) COVERED LOADING DOCKS
- HEAVY INDUSTRIAL ZONING (IH)
- OFF-STREET PARKING
- LARGE STAGING AREA
- SIGNALIZED INTERSECTION



AVAILABLE SF
19,620 TOTAL SF

INCLUDES 5,392 SF
OF OFFICE/
SHOWROOM

ASKING RENT
FIRST YEAR:
\$11,772/MO.
(\$0.60/SF/MO.
BLENDED) + NNN'S

SECOND YEAR:
\$14,700/MO.
(\$0.75/SF/MO.
BLENDED) + NNN'S

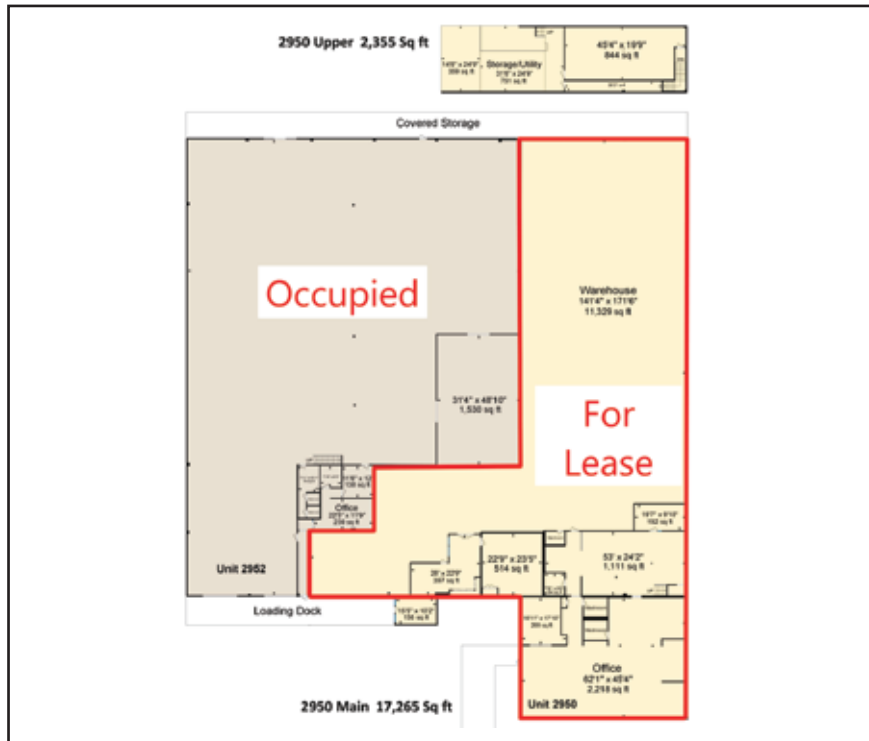
CONTACT
SCOTT WRIGHT
503-753-5099
scott@wrightcommercial.com



809 N. RUSSELL STREET SUITE 201
PORTLAND, OR 97227
503-335-3300
wrightcommercial.com

INDUSTRIAL BUILDING FOR LEASE

2950 NW YEON AVE. | PORTLAND, OR



Although we obtained the information above from sources we believe to be reliable, we make no guarantee about its accuracy. It is submitted subject to the possibility of errors, omissions, change of price, rental or other conditions, prior sale, lease or financing, or withdrawal without notice. You and your legal advisors should conduct your own investigation of the property before transaction.

CONTACT
SCOTT WRIGHT
503-753-5099
scott@wrightcommercial.com



809 N. RUSSELL STREET SUITE 201
PORTLAND, OR 97227
503-335-3300
wrightcommercial.com