

Office Space For Lease

100 Meadowcreek Drive, Corte Madera



±1,242 Rentable Square Feet Available/Suite 150

Lease Terms:

- \$3.75 PSF/Month
- Full Service
- Annual 4% Increases
- No O.E. Pass-Throughs
- 2-5 Year Term

- ◆ Creative Office Space in a Quiet Creek-Side Setting
- ◆ Dramatic Architecture & Abundance of Natural Light
- ◆ Thermostatic Control & Operable Windows
- ◆ Lunch Room (Common Area)
- ◆ Great So. Marin Location w/Easy Access to Hwy 101
- ◆ Free On-Site Parking
- ◆ Walk to Corte Madera Village, Restaurants, Nugget Market
- ◆ Bicycle & Jogging Paths Nearby

(NOTE: Suite 150 can be combined with Suite 101 for a total of 1,996 RSF.)

MERYL SEBESTYEN REAL ESTATE

CA Broker Lic #00554190
M 415.601.9215

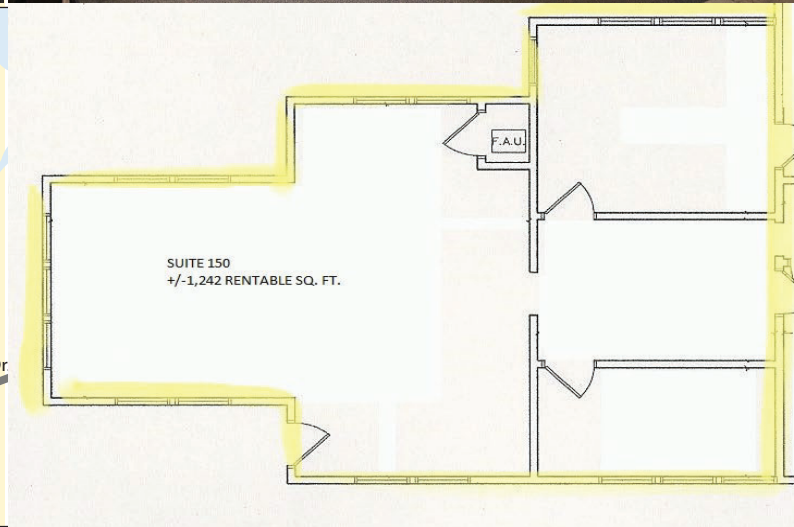
meryl@msebestyenre.com

100 Meadowcreek Drive, Corte Madera



AVAILABLE: Suite 150: ±1,242 RSF:

This unique office space boasts its own private entrance, large open work area with tall ceiling & abundance of natural light, 2 private offices, wet bar, storage area, HVAC w/thermostatic control, plus operable windows.



MERYL SEBESTYEN REAL ESTATE

CA Broker Lic #00554190

M 415.601.9215

meryl@msebestyenre.com