

FOR LEASE

852 5th Avenue

San Diego, California 92101



CREATIVE OFFICE FOR LEASE

Onyx Building

EMMETT CAHILL
619.243.8470
ecahill@qfcre.com
BRE #02033604

PETER WRIGHT
619.243.8450
pwright@qfcre.com
BRE #01846272

The information contained here has been obtained from sources considered to be reliable, but no guarantee of its accuracy is made by this company. In addition, no representation is made respecting zoning, condition of title, dimensions or any matters of a legal or environmental nature. Such matters should be referred to legal counsel for determination. Terms and conditions are subject to change without prior notice. Subject to errors and omissions.



SPACE AVAILABLE

5,000 SF

LEASE RATES

\$1.25 PSF + Electric

PROPERTY HIGHLIGHTS

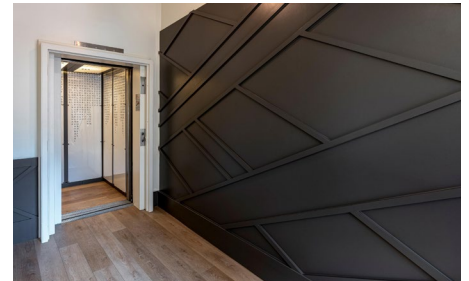
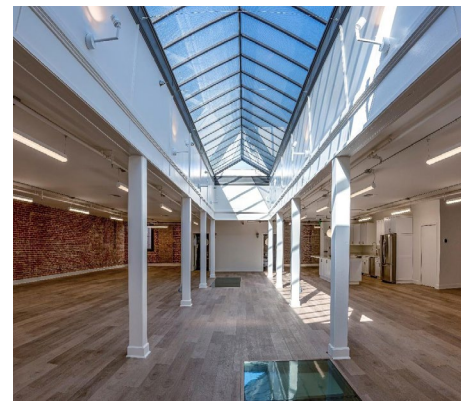
- Hardwood floors, brick walls, large atrium skylight
- Two renovated restrooms, state-of-the-art HVAC and lighting systems
- Full kitchen with dual beer, kombucha, or cold brew tap system
- Private ground floor entry room with elevator opening directly to suite
- Two private office spaces



EMMETT CAHILL
619.243.8470
ecahill@qfcre.com
BRE #02033604

PETER WRIGHT
619.243.8450
pwright@qfcre.com
BRE #01846272

The information contained here has been obtained from sources considered to be reliable, but no guarantee of its accuracy is made by this company. In addition, no representation is made respecting zoning, condition of title, dimensions or any matters of a legal or environmental nature. Such matters should be referred to legal counsel for determination. Terms and conditions are subject to change without prior notice. Subject to errors and omissions.



PHOTOS

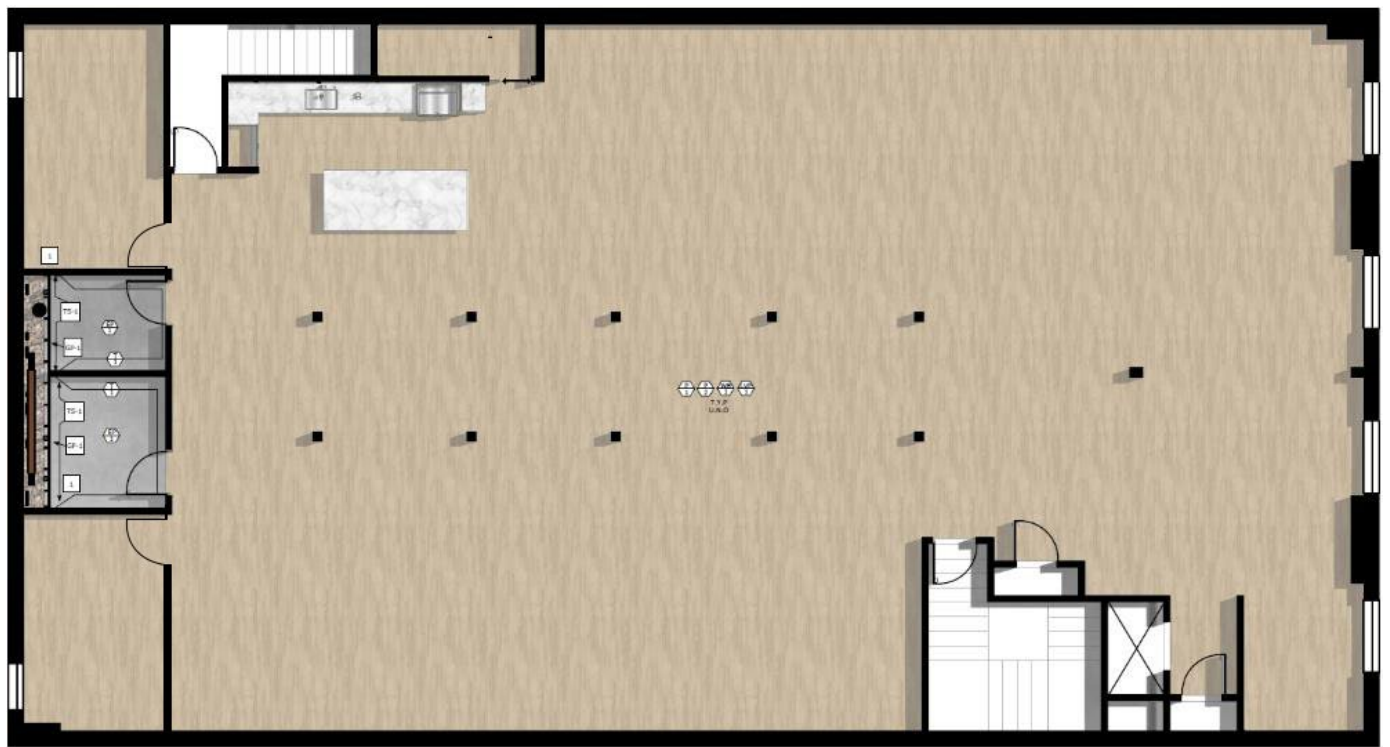


EMMETT CAHILL
619.243.8470
ecahill@qfcre.com
BRE #02033604

PETER WRIGHT
619.243.8450
pwright@qfcre.com
BRE #01846272

The information contained here has been obtained from sources considered to be reliable, but no guarantee of its accuracy is made by this company. In addition, no representation is made respecting zoning, condition of title, dimensions or any matters of a legal or environmental nature. Such matters should be referred to legal counsel for determination. Terms and conditions are subject to change without prior notice. Subject to errors and omissions.

FLOOR PLAN

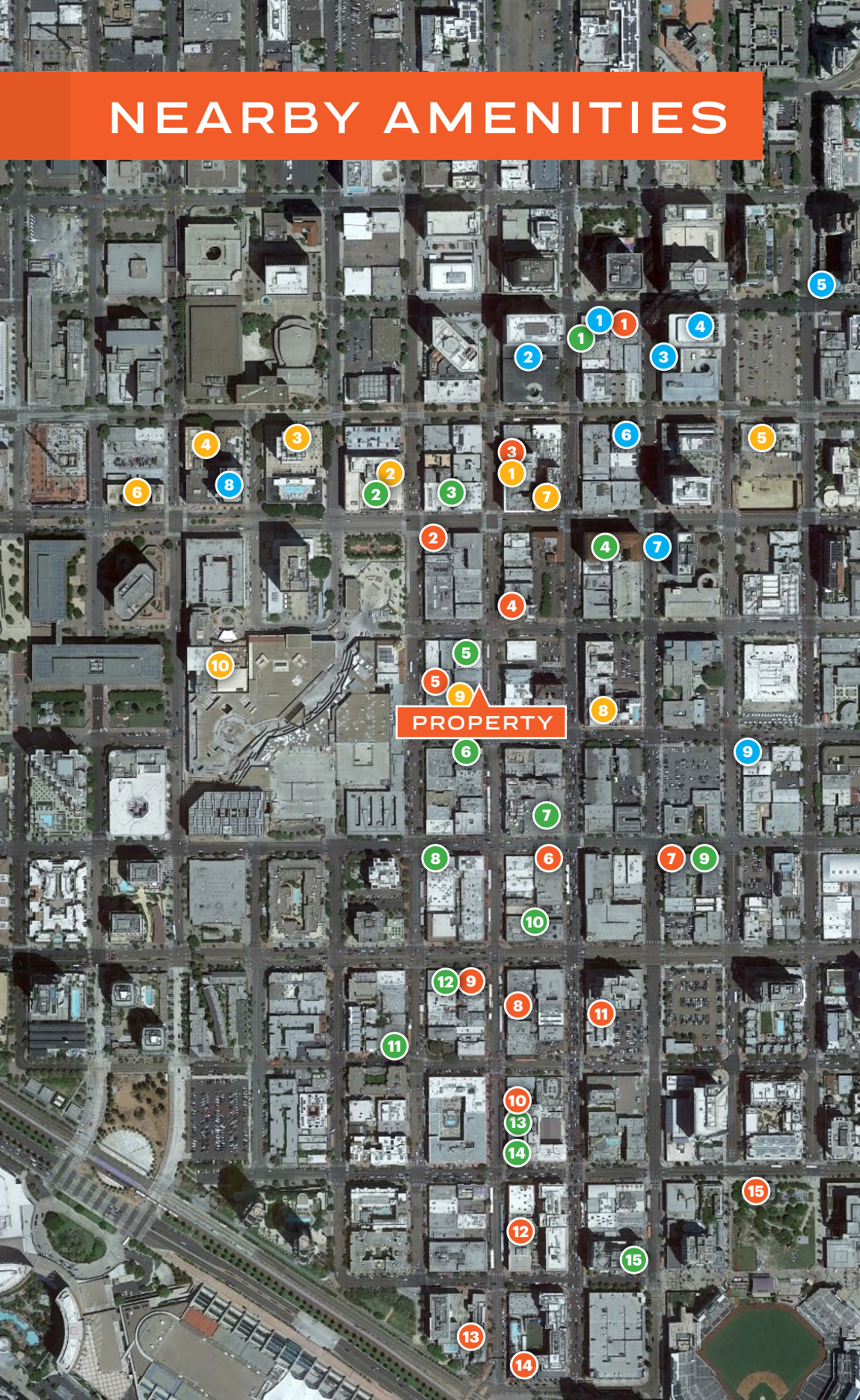


EMMETT CAHILL
619.243.8470
ecahill@qfcre.com
BRE #02033604

PETER WRIGHT
619.243.8450
pwright@qfcre.com
BRE #01846272

The information contained here has been obtained from sources considered to be reliable, but no guarantee of its accuracy is made by this company. In addition, no representation is made respecting zoning, condition of title, dimensions or any matters of a legal or environmental nature. Such matters should be referred to legal counsel for determination. Terms and conditions are subject to change without prior notice. Subject to errors and omissions.

NEARBY AMENITIES



RESTAURANTS

1. Donut Bar
2. Gaslamp Fish House
3. Curadero
4. Melting Pot
5. Bandar Restaurant
6. Fogo de Chao
7. Breakfast Republic
8. Rustic Root
9. El Chingon
10. Lionfish
11. The Nolen
12. Cafe Sevilla
13. Lou & Mickey's
14. Nobu
15. Social Tap

HOTELS

1. Kimpton Hotel
2. The US Grant
3. The Westgate Hotel
4. The Bristol Hotel
5. Hotel Churchill
6. The Sofia Hotel
7. Courtyard Marriott
8. Andaz San Diego
9. The Keating Hotel
10. The Westin

BAR & BREWPUBS

1. Stout Public House
2. Rendezvous
3. Phantom Lounge
4. Parq
5. Gaslamp Tavern
6. Atomic
7. 5th & Sky
8. Tin Roof
9. Noble Experiment
10. Side Bar
11. Fluxx
12. Prohibition
13. The Pool House
14. Fifth and Rose
15. Altitude

COFFEE

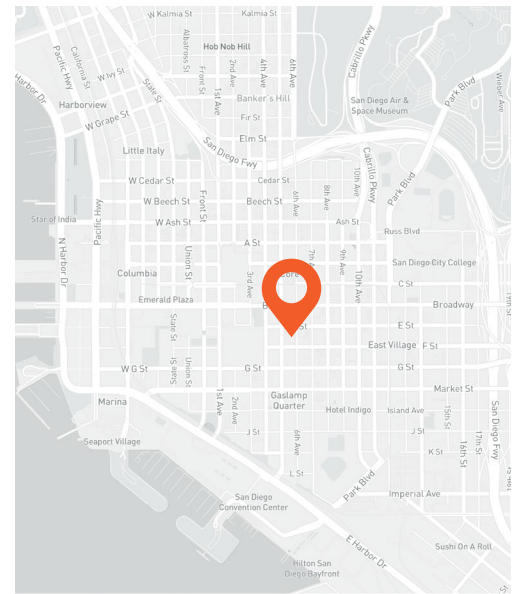
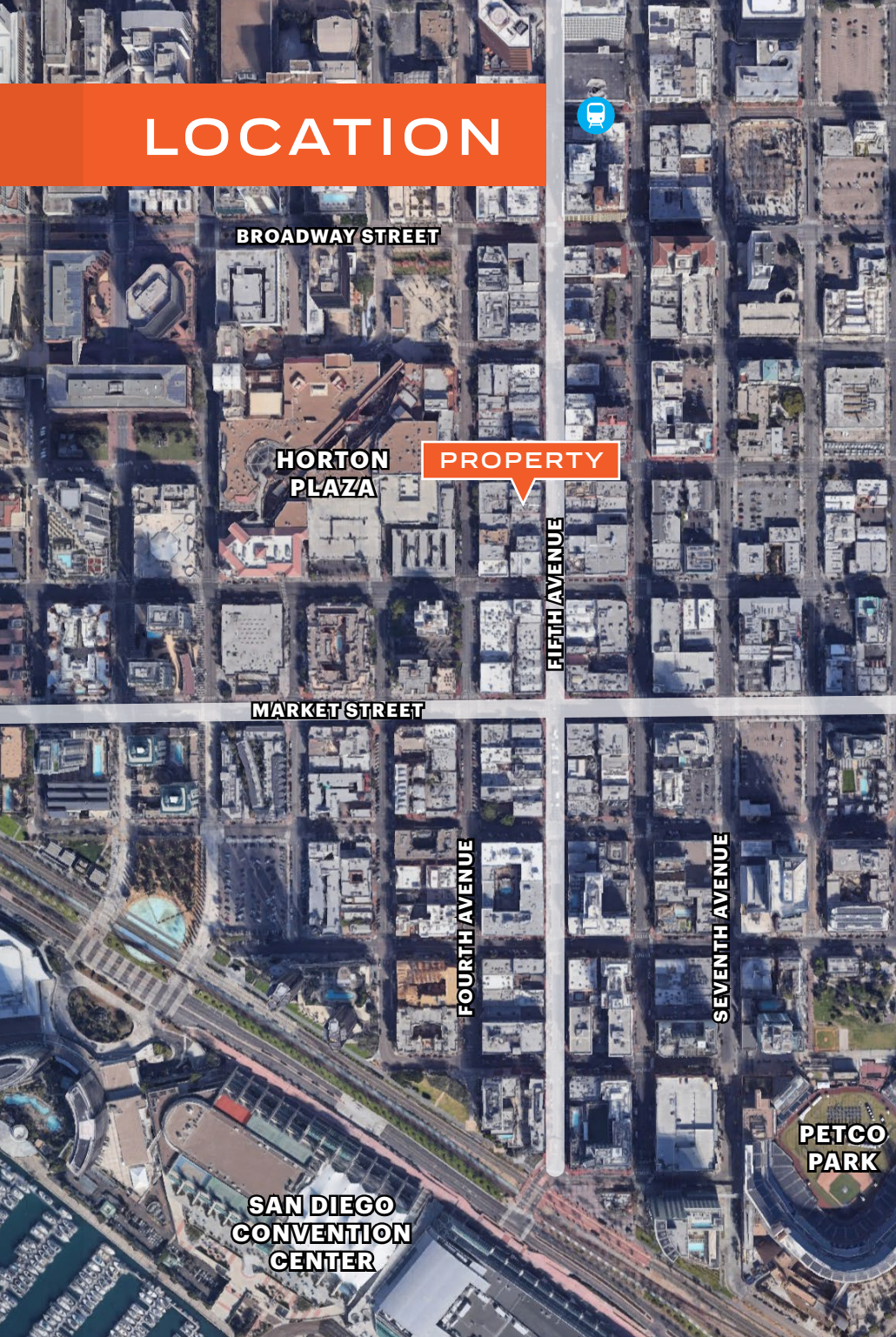
1. Starbucks
2. 401 Brew Street
3. Coffee N' Talk
4. 7 Cafe
5. Little Owl Coffee
6. Organo Gold
7. The Bean Box
8. Blue Bottle Coffee
9. Tired Eyes Coffee

EMMETT CAHILL
619.243.8470
ecahill@qfcre.com
BRE #02033604

PETER WRIGHT
619.243.8450
pwright@qfcre.com
BRE #01846272

The information contained here has been obtained from sources considered to be reliable, but no guarantee of its accuracy is made by this company. In addition, no representation is made respecting zoning, condition of title, dimensions or any matters of a legal or environmental nature. Such matters should be referred to legal counsel for determination. Terms and conditions are subject to change without prior notice. Subject to errors and omissions.

LOCATION



- Walking distance to Petco Park, the Embarcadero, and countless cafes, restaurants and bars
- Two block to the San Diego Trolley line
- One block from the new Campus at Horton Plaza, a +1M SF project spanning 7 city blocks set for completion 2023

81,000

jobs currently in
downtown San Diego

1,500

residential units in planned
development and construction

EMMETT CAHILL
619.243.8470
ecahill@qfcre.com
BRE #02033604

PETER WRIGHT
619.243.8450
pwright@qfcre.com
BRE #01846272

The information contained here has been obtained from sources considered to be reliable, but no guarantee of its accuracy is made by this company. In addition, no representation is made respecting zoning, condition of title, dimensions or any matters of a legal or environmental nature. Such matters should be referred to legal counsel for determination. Terms and conditions are subject to change without prior notice. Subject to errors and omissions.

FOR LEASE

852 5th Avenue
San Diego, California 92101



Contact Information

QFC REAL ESTATE

1495 Pacific Highway, Suite 450
San Diego, CA 92101
619.243.8454 • qfcre.com

EMMETT CAHILL

619.243.8470
ecahill@qfcre.com
BRE #02033604

PETER WRIGHT

619.243.8450
pwright@qfcre.com
BRE #01846272

The information contained here has been obtained from sources considered to be reliable, but no guarantee of its accuracy is made by this company. In addition, no representation is made respecting zoning, condition of title, dimensions or any matters of a legal or environmental nature. Such matters should be referred to legal counsel for determination. Terms and conditions are subject to change without prior notice. Subject to errors and omissions.