

WAREHOUSE PROPERTY FOR SUBLEASE

Columbia Pacific Airport Way Industrial

12815 NORTHEAST AIRPORT WAY / PORTLAND, OR 97230



Flexible 18,240 SF warehouse for sublease
through August 31, 2028

CONTACT

Chris Lio c 503 804 2929 / o 503 224 6791 / clio@naielliott.com
Mike Mayer c 503 686 0599 / o 503 224 6791 / mmayer@naielliott.com



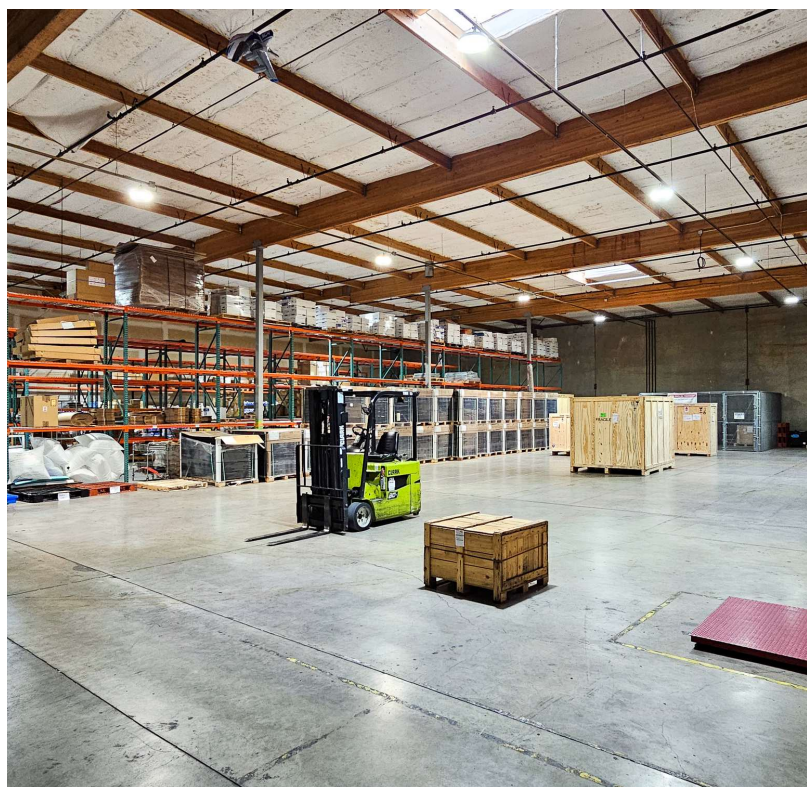
NE Airport Way location with great access to I-205



AVAILABLE SPACE

Suite 12815: 18,240 RSF warehouse

- Appx. 1,200 SF of modern office areas
- Sublease through 8/31/2028
- Currently \$.88 PSF, w/Nets of appx. \$.36
- 22' clear height
- 4 covered docks (10' x 10')
- 3 grade doors (10' x 14')
- Wet sprinkler system
- 250 amps of 480/277 3-phase, 4 wire



CONTACT

Chris Lio c 503 804 2929 / o 503 224 6791 / clio@naielliott.com
Mike Mayer c 503 686 0599 / o 503 224 6791 / mmayer@naielliott.com





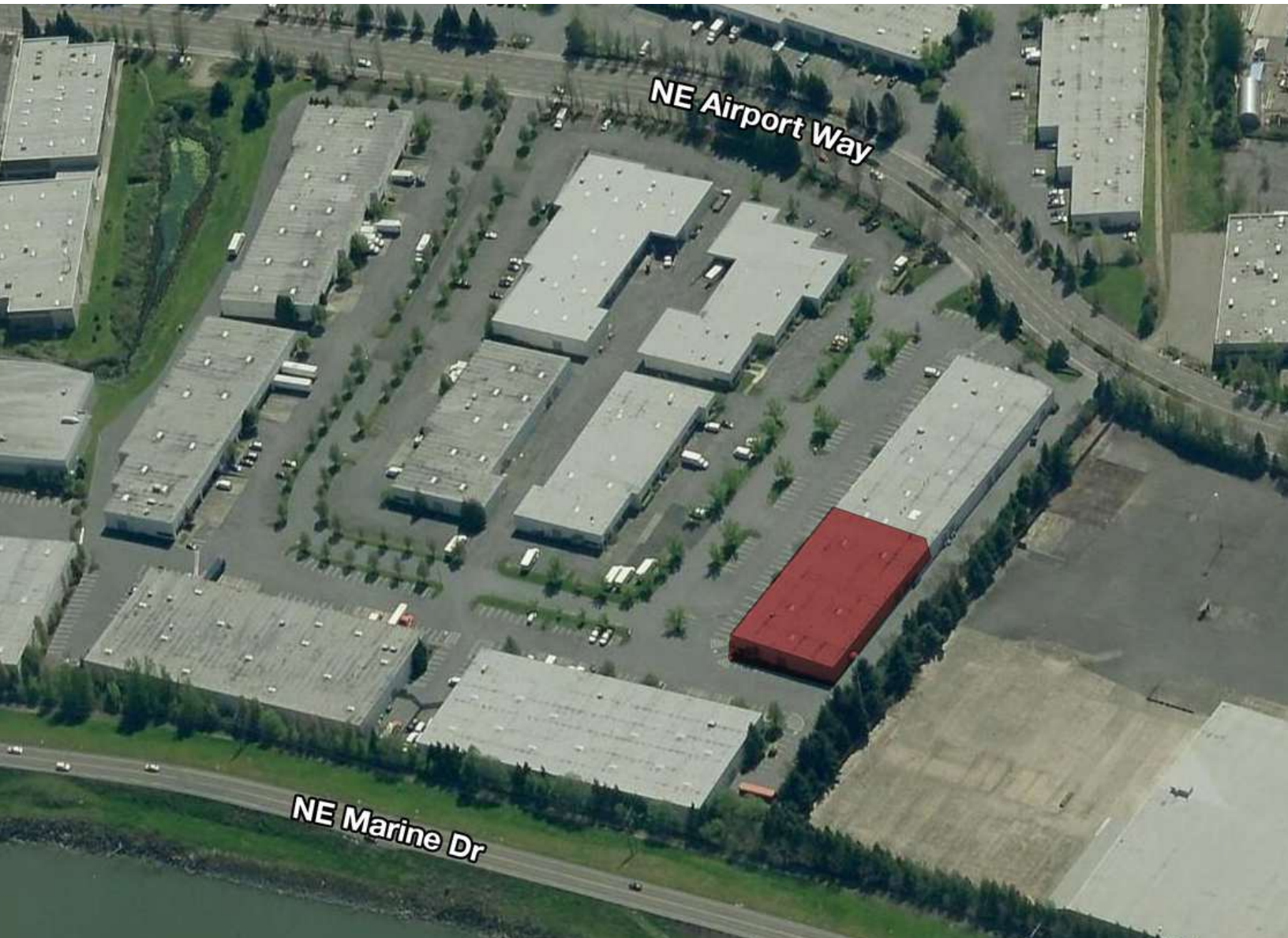
CONTACT

Chris Lio c 503 804 2929 / o 503 224 6791 / clio@naielliott.com
Mike Mayer c 503 686 0599 / o 503 224 6791 / mmayer@naielliott.com

NAI Elliott

The information herein has been obtained from sources we deem reliable. We do not, however, guarantee its accuracy. All information should be verified prior to purchase/leasing. View the Real Estate Agency Pamphlet by visiting our website, www.naielliott.com/agencydisclosures

Lease Spaces



AVAILABLE SPACES

SUITE	SIZE (SF)	LEASE TYPE	LEASE RATE	DESCRIPTION
12815 NE Airport Way	18,240 SF	NNN	\$16,053 per month	<ul style="list-style-type: none">- 24' Clear- 4 Docks- 3 Grade Doors- Sprinklers- 2 Office Areas

CONTACT

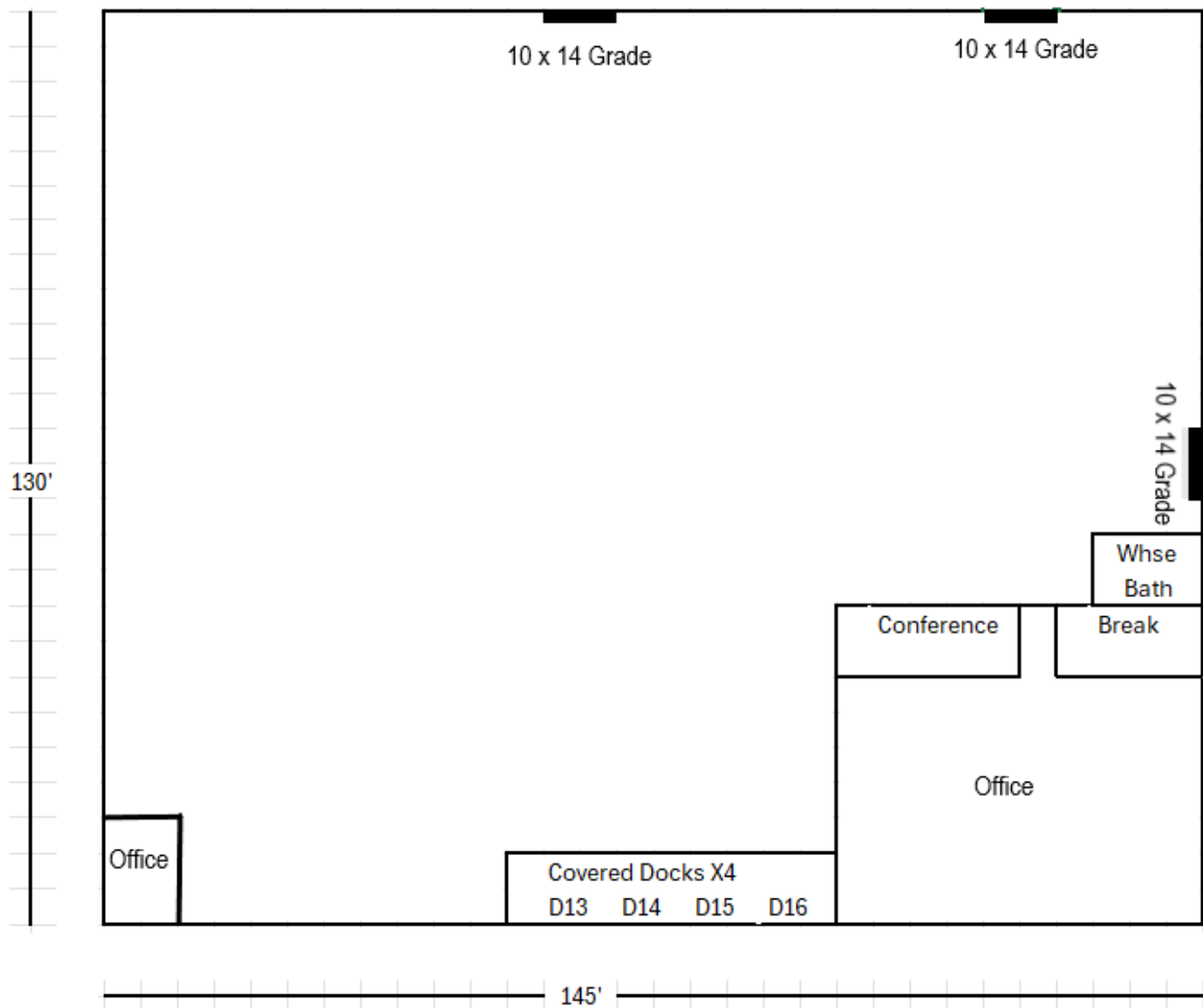
Chris Lio c 503 804 2929 / o 503 224 6791 / clio@naielliott.com
Mike Mayer c 503 686 0599 / o 503 224 6791 / mmayer@naielliott.com



The information herein has been obtained from sources we deem reliable. We do not, however, guarantee its accuracy. All information should be verified prior to purchase/leasing. View the Real Estate Agency Pamphlet by visiting our website, www.naielliott.com/agencydisclosures

Floor Plan

(Not to Scale)



CONTACT

Chris Lio c 503 804 2929 / o 503 224 6791 / clio@naielliott.com
Mike Mayer c 503 686 0599 / o 503 224 6791 / mmayer@naielliott.com



The information herein has been obtained from sources we deem reliable. We do not, however, guarantee its accuracy. All information should be verified prior to purchase/leasing. View the Real Estate Agency Pamphlet by visiting our website, www.naielliott.com/agencydisclosures

Location Map



Map data ©2025 Imagery ©2025 Airbus, CNES / Airbus, Maxar Technologies, Metro, Portland Oregon, USDA/FPAC/GEO

CONTACT

Chris Lio c 503 804 2929 / o 503 224 6791 / clio@naielliott.com
Mike Mayer c 503 686 0599 / o 503 224 6791 / mmayer@naielliott.com



The information herein has been obtained from sources we deem reliable. We do not, however, guarantee its accuracy. All information should be verified prior to purchase/leasing. View the Real Estate Agency Pamphlet by visiting our website, www.naielliott.com/agencydisclosures