



101 N. Gray Avenue  
Wilmington, DE 19805

FLEX/OFFICE

**FOR  
SALE**



## PROPERTY & AREA OVERVIEW

Free standing, masonry construction +/- 4,708 SF commercial office flex building with "A" frame truss/shingle roof system. Ample windows offering natural light and building is well maintained with a clean interior. With a new shingle roof and new gas HVAC system the property is ideal for an owner user since the property is leased to a credit rated company. Parking can accommodate 5-6 vehicles (stacked). Conveniently located on the west side of Wilmington, DE off

Lancaster Avenue (RT 48) and Gray Avenue with easy access to the I-95 Interchange. The property is also close to Centre Road (RT 141) and Lancaster Pike providing easy access to Greenville, with abundant retail amenities, and with immediate proximity to the new Barely Mill Plaza, a recent redevelopment with stores such as Wegmans, First Watch, and Christiana Care GoHealth Urgent Care.

## PROPERTY DETAILS

- **Available (4,708 SF total):**
  - First Floor: 3,380 SF
    - 2,740 SF private offices, reception, kitchenette, work areas
    - 640 SF warehouse with drive-in door
  - Second Floor: 1,328 SF
    - 1,152 SF offices and conference room
    - 176 SF loft storage

- **Sale Price:** \$495,000 (\$105/SF)
- **Land Area:** 0.13 AC
- **Zoning:** Secondary Business Commercial Center (26C-2)

THIS DOCUMENT HAS BEEN PREPARED BY MEDORI COMMERCIAL REALTY, LLC, REFERRED TO HEREIN AS MCR FOR ADVERTISING AND GENERAL INFORMATION ONLY. MCR MAKES NO GUARANTEES, REPRESENTATIONS, OR WARRANTIES OF ANY KIND, EXPRESSED OR IMPLIED, REGARDING THE INFORMATION INCLUDING, BUT NOT LIMITED TO, WARRANTIES OF CONTENT, ACCURACY, AND RELIABILITY. ANY INTERESTED PARTY SHOULD UNDERTAKE THEIR OWN INQUIRIES AS TO THE ACCURACY OF THE INFORMATION. MCR EXCLUDES UNEQUIVOCALLY ALL INFERRED OR IMPLIED TERMS, CONDITIONS AND WARRANTIES ARISING OUT OF THIS DOCUMENT AND EXCLUDES ALL LIABILITY FOR LOSS AND DAMAGES ARISING THERE FROM.

## FOR MORE INFORMATION, CONTACT:

Tony Medori  
tony@medoricommercialrealty.com  
302-633-0099 (office)  
302-218-2053 (cell)

## Medori Commercial Realty, LLC

601 Kirkwood Highway  
Wilmington, DE 19805  
[www.medoricommercialrealty.com](http://www.medoricommercialrealty.com)



101 N. Gray Avenue  
Wilmington, DE 19805

## AVAILABLE SPACE



FOR MORE INFORMATION, CONTACT:

Tony Medori

[tony@medoricommercialrealty.com](mailto:tony@medoricommercialrealty.com)

302-633-0099 (office)

302-218-2053 (cell)

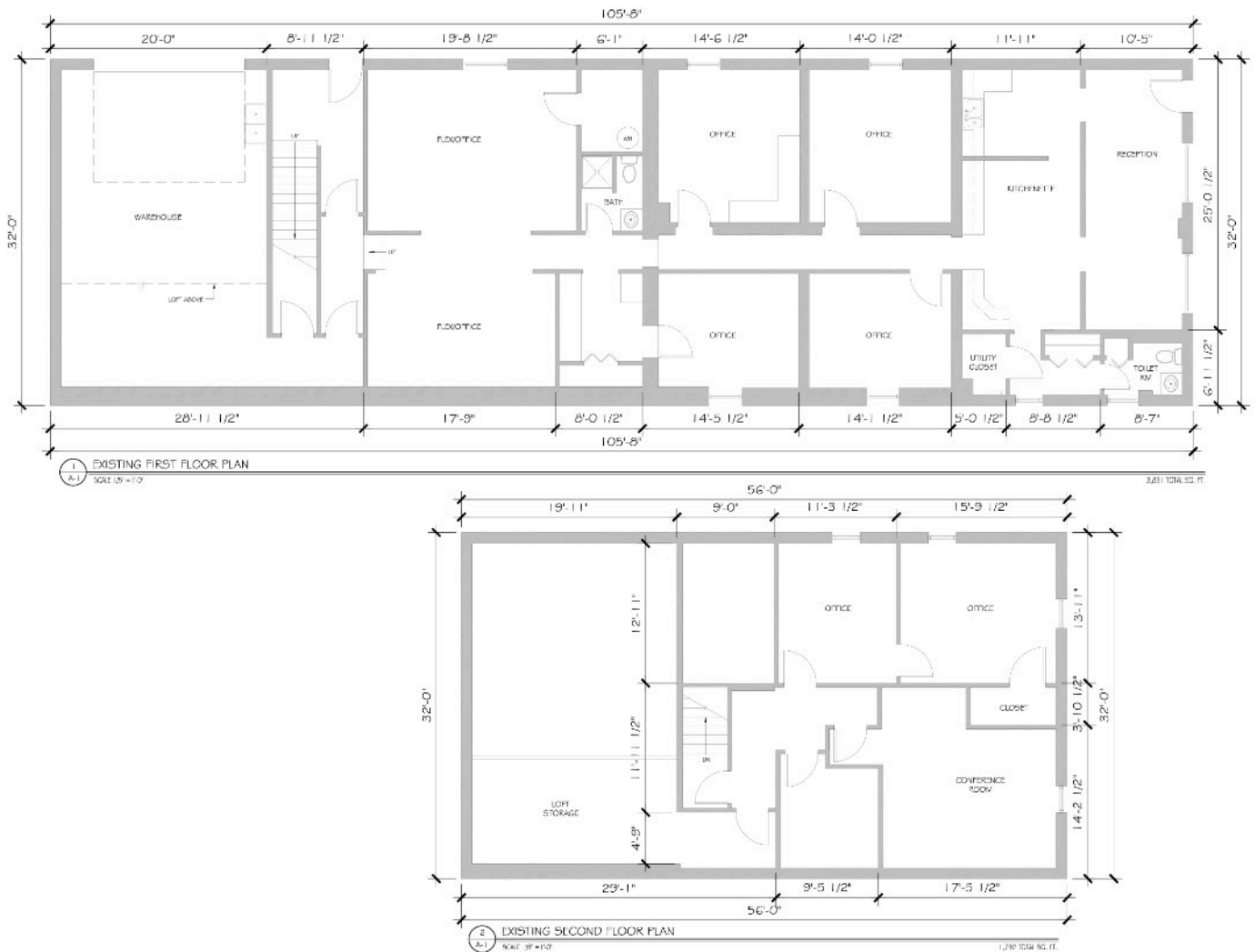
**Medori Commercial Realty, LLC**

601 Kirkwood Highway

Wilmington, DE 19805

[www.medoricommercialrealty.com](http://www.medoricommercialrealty.com)

## FLOOR PLAN



THIS DOCUMENT HAS BEEN PREPARED BY MEDORI COMMERCIAL REALTY, LLC, REFERRED TO HEREIN AS MCR FOR ADVERTISING AND GENERAL INFORMATION ONLY. MCR MAKES NO GUARANTEES, REPRESENTATIONS, OR WARRANTIES OF ANY KIND, EXPRESSED OR IMPLIED, REGARDING THE INFORMATION INCLUDING, BUT NOT LIMITED TO, WARRANTIES OF CONTENT, ACCURACY, AND RELIABILITY. ANY INTERESTED PARTY SHOULD UNDERTAKE THEIR OWN INQUIRIES AS TO THE ACCURACY OF THE INFORMATION. MCR EXCLUDES UNEQUIVOCALLY ALL IMPLIED OR IMPLIED TERMS, CONDITIONS AND WARRANTIES ARISING OUT OF THIS DOCUMENT AND EXCLUDES ALL LIABILITY FOR LOSS AND DAMAGES ARISING THERE FROM.

FOR MORE INFORMATION, CONTACT:

Tony Medori

[tony@medoricommercialrealty.com](mailto:tony@medoricommercialrealty.com)

302-633-0099 (office)

302-218-2053 (cell)

**Medori Commercial Realty, LLC**

601 Kirkwood Highway

Wilmington, DE 19805

[www.medoricommercialrealty.com](http://www.medoricommercialrealty.com)



101 N. Gray Avenue  
Wilmington, DE 19805

## LOCATION MAP



FOR MORE INFORMATION, CONTACT:

Tony Medori

[tony@medoricommercialrealty.com](mailto:tony@medoricommercialrealty.com)

302-633-0099 (office)

302-218-2053 (cell)

**Medori Commercial Realty, LLC**

601 Kirkwood Highway

Wilmington, DE 19805

[www.medoricommercialrealty.com](http://www.medoricommercialrealty.com)



101 N. Gray Avenue  
Wilmington, DE 19805

## OFFICE GALLERY



THIS DOCUMENT HAS BEEN PREPARED BY MEDORI COMMERCIAL REALTY, LLC, REFERRED TO HEREIN AS MCR FOR ADVERTISING AND GENERAL INFORMATION ONLY. MCR MAKES NO GUARANTEES, REPRESENTATIONS, OR WARRANTIES OF ANY KIND, EXPRESSED OR IMPLIED, REGARDING THE INFORMATION INCLUDING, BUT NOT LIMITED TO, WARRANTIES OF CONTENT, ACCURACY, AND RELIABILITY. ANY INTERESTED PARTY SHOULD UNDERTAKE THEIR OWN INQUIRIES AS TO THE ACCURACY OF THE INFORMATION. MCR EXCLUDES UNEQUIVOCALLY ALL INFERRED OR IMPLIED TERMS, CONDITIONS AND WARRANTIES ARISING OUT OF THIS DOCUMENT AND EXCLUDES ALL LIABILITY FOR LOSS AND DAMAGES ARISING THERE FROM.

FOR MORE INFORMATION, CONTACT:

Tony Medori  
tony@medoricommercialrealty.com  
302-633-0099 (office)  
302-218-2053 (cell)

**Medori Commercial Realty, LLC**

601 Kirkwood Highway  
Wilmington, DE 19805  
www.medoricommercialrealty.com

101 N. Gray Avenue  
Wilmington, DE 19805

## WAREHOUSE GALLERY



THIS DOCUMENT HAS BEEN PREPARED BY MEDORI COMMERCIAL REALTY, LLC, REFERRED TO HEREIN AS MCR FOR ADVERTISING AND GENERAL INFORMATION ONLY. MCR MAKES NO GUARANTEES, REPRESENTATIONS, OR WARRANTIES OF ANY KIND, EXPRESSED OR IMPLIED, REGARDING THE INFORMATION INCLUDING, BUT NOT LIMITED TO, WARRANTIES OF CONTENT, ACCURACY, AND RELIABILITY. ANY INTERESTED PARTY SHOULD UNDERTAKE THEIR OWN INQUIRIES AS TO THE ACCURACY OF THE INFORMATION. MCR EXCLUDES UNEQUIVOCALLY ALL IMPLIED OR IMPLIED TERMS, CONDITIONS AND WARRANTIES ARISING OUT OF THIS DOCUMENT AND EXCLUDES ALL LIABILITY FOR LOSS AND DAMAGES ARISING THERE FROM.

FOR MORE INFORMATION, CONTACT:

Tony Medori

[tony@medoricommercialrealty.com](mailto:tony@medoricommercialrealty.com)

302-633-0099 (office)

302-218-2053 (cell)

**Medori Commercial Realty, LLC**

601 Kirkwood Highway

Wilmington, DE 19805

[www.medoricommercialrealty.com](http://www.medoricommercialrealty.com)