

FOR LEASE | 17,340 SF

HIGH-IMAGE RETAIL SPACE



± 20,500 CPD via Foothill Blvd & Sayre St
± 100,656 CPD via 210 Freeway

FORMER RITE AID WITH DRIVE-THRU PHARMACY

13803 FOOTHILL BOULEVARD | SYLMAR, CA 91342

YAIR HAIMOFF, SIOR

Executive Managing Director
818.203.5429
yhaimoff@spectrumcre.com
CA DRE Lic. #01414758

No warranty, express or implied, is made as to the accuracy of the information contained herein. This information is submitted subject to errors, omission, change of price, rental or other conditions, withdrawal without notice, and is subject to any special listing conditions imposed by our principals. Cooperating brokers, buyers, tenants and other parties who receive this document should not rely on it, but should use it as a starting point of analysis, and should independently confirm the accuracy of the information contained herein through a due diligence review of the books, records, files and documents that constitute reliable sources of the information described herein. Spectrum Commercial Real Estate, Inc. CA DRE #02042805

SPECTRUM
COMMERCIAL REAL ESTATE, INC.
spectrumcre.com | 818.252.9900

PROPERTY FEATURES



Former Rite Aid with Drive-Thru Pharmacy



17,340 Square Feet



Ample Parking



Tremendous Street Visibility



Building & Pylon Signage



Newer 2010 State-of-the-Art Construction

LOCATION HIGHLIGHTS



Prime Sylmar Location | Signalized Intersection



Excellent Demographics



High Vehicle and Foot Traffic



Across from Vallarta Market & other larger retail centers

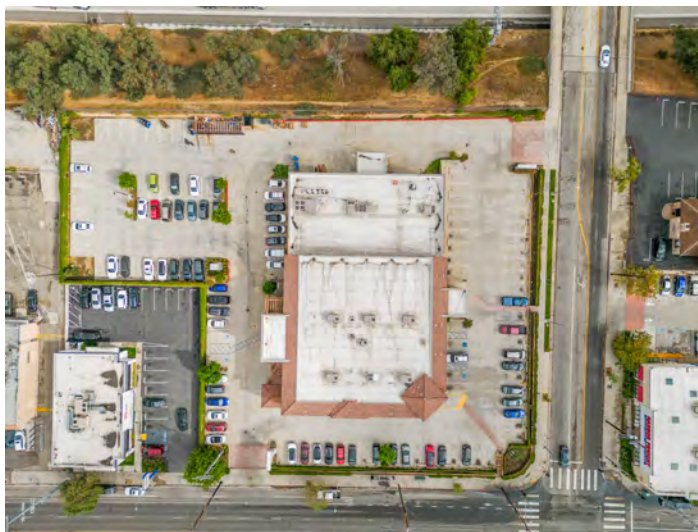


Close to Several Area Hospitals

- Olive View UCLA Medical Center
- Providence Holy Cross Medical Center



Excellent Access to 210, 118 & 5 Freeways



REAR PARKING



DRIVE THRU



PYLON SIGNAGE

YAIR HAIMOFF, SIOR

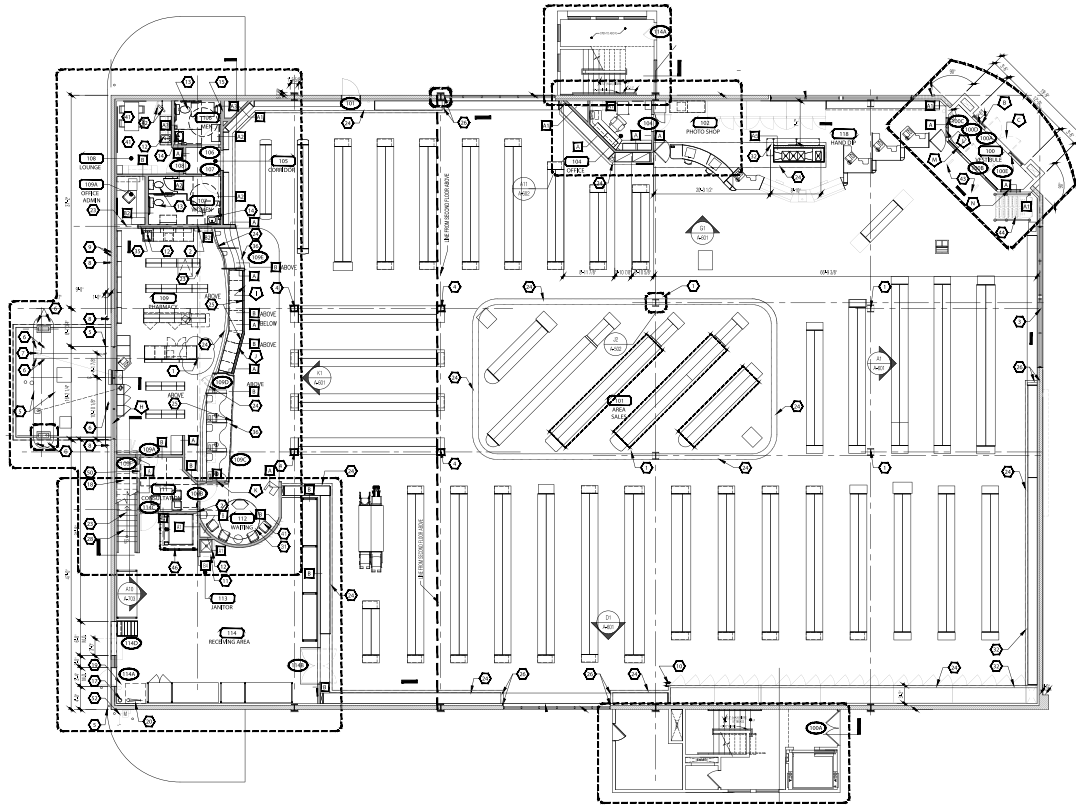
Executive Managing Director
818.203.5429

yhaimoff@spectrumcre.com
CA DRE Lic. #01414758

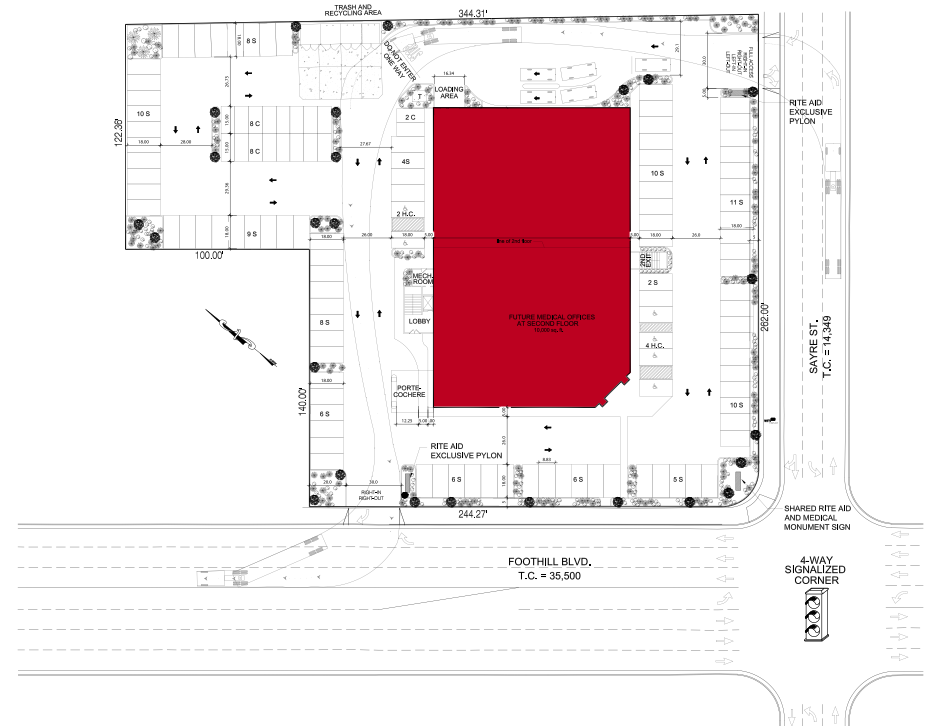
No warranty, express or implied, is made as to the accuracy of the information contained herein. This information is submitted subject to errors, omission, change of price, rental or other conditions, withdrawal without notice, and is subject to any special listing conditions imposed by our principals. Cooperating brokers, buyers, tenants and other parties who receive this document should not rely on it, but should use it as a starting point of analysis, and should independently confirm the accuracy of the information contained herein through a due diligence review of the books, recods, files and documents that constitute reliable sources of the information described herein. Spectrum Commercial Real Estate, Inc. CA DRE #02042805

SPECTRUM
COMMERCIAL REAL ESTATE, INC.
spectrumcre.com | 818.252.9900

FLOOR PLAN



SITE PLAN



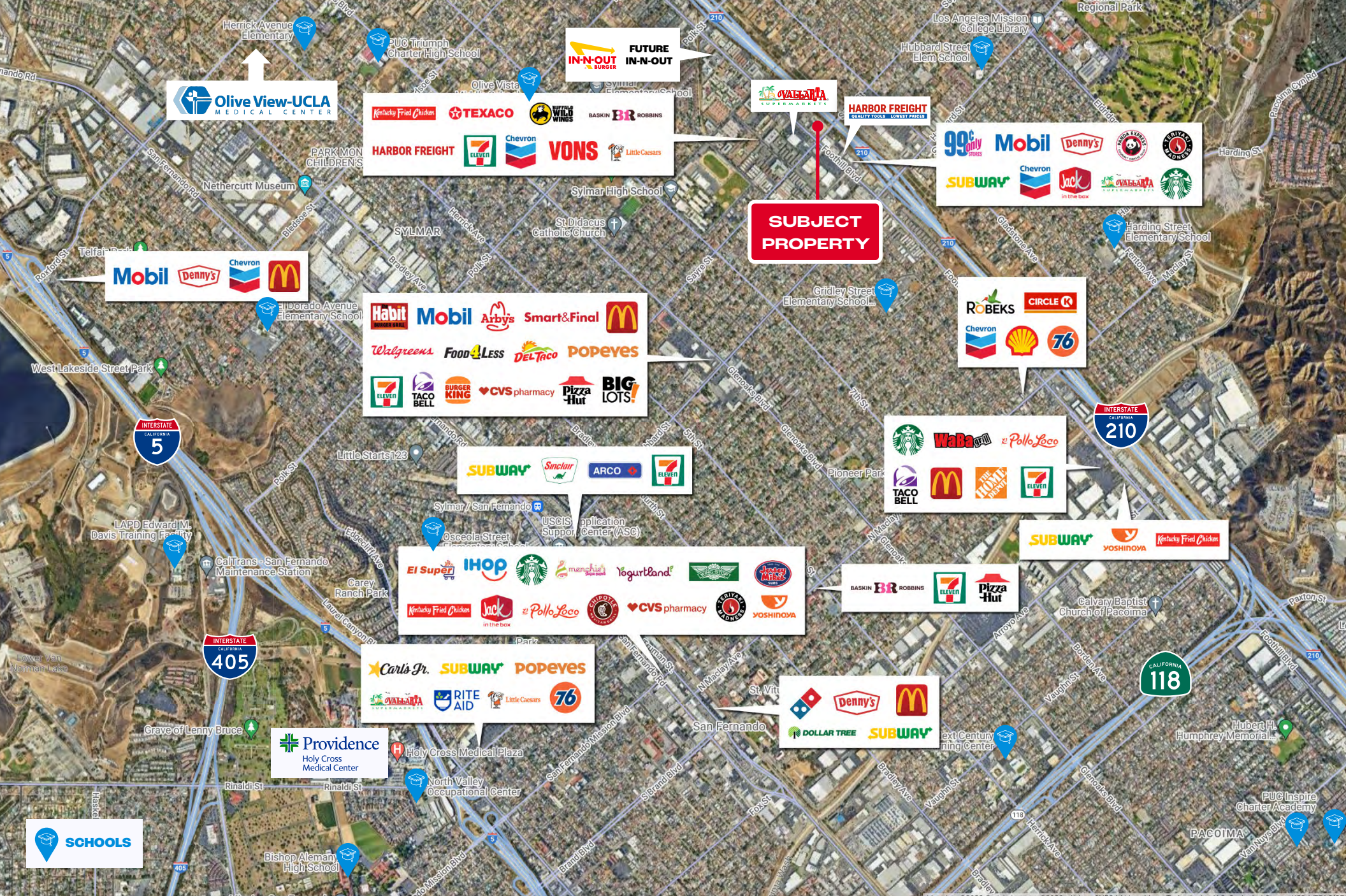
YAIR HAIMOFF, SIOR

Executive Managing Director
818.203.5429

yhaimoff@spectrumcre.com
CA DRE Lic. #01414758

No warranty, express or implied, is made as to the accuracy of the information contained herein. This information is submitted subject to errors, omission, change of price, rental or other conditions, withdrawal without notice, and is subject to any special listing conditions imposed by our principals. Cooperating brokers, buyers, tenants and other parties who receive this document should not rely on it, but should use it as a starting point of analysis, and should independently confirm the accuracy of the information contained herein through a due diligence review of the books, recods, files and documents that constitute reliable sources of the information described herein. Spectrum Commercial Real Estate, Inc. CA DRE #02042805

SPECTRUM
COMMERCIAL REAL ESTATE, INC.
spectrumcre.com | 818.252.9900



YAIR HAIMOFF, SIOR

Executive Managing Director

818.203.5429

yhaimoff@spectrumcre.com

CA DRE Lic. #0141758

No warranty, express or implied, is made as to the accuracy of the information contained herein. This information is submitted subject to errors, omission, change of price, rental or other conditions, withdrawal without notice, and is subject to any special listing conditions imposed by our principals. Cooperating brokers, buyers, tenants and other parties who receive this document should not rely on it, but should use it as a starting point of analysis, and should independently confirm the accuracy of the information contained herein through a due diligence review of the books, records, files and documents that constitute reliable sources of the information described herein. Spectrum Commercial Real Estate, Inc. CA DRE #02042805

SPECTRUM
COMMERCIAL REAL ESTATE, INC.

spectrumcre.com / 818.252.9900

DEMOGRAPHIC DATA



POPULATION

	1 MILE	3 MILES	5 MILES
Estimated Population	32,285	133,805	267,063
Estimated Households	9,061	36,379	74,687



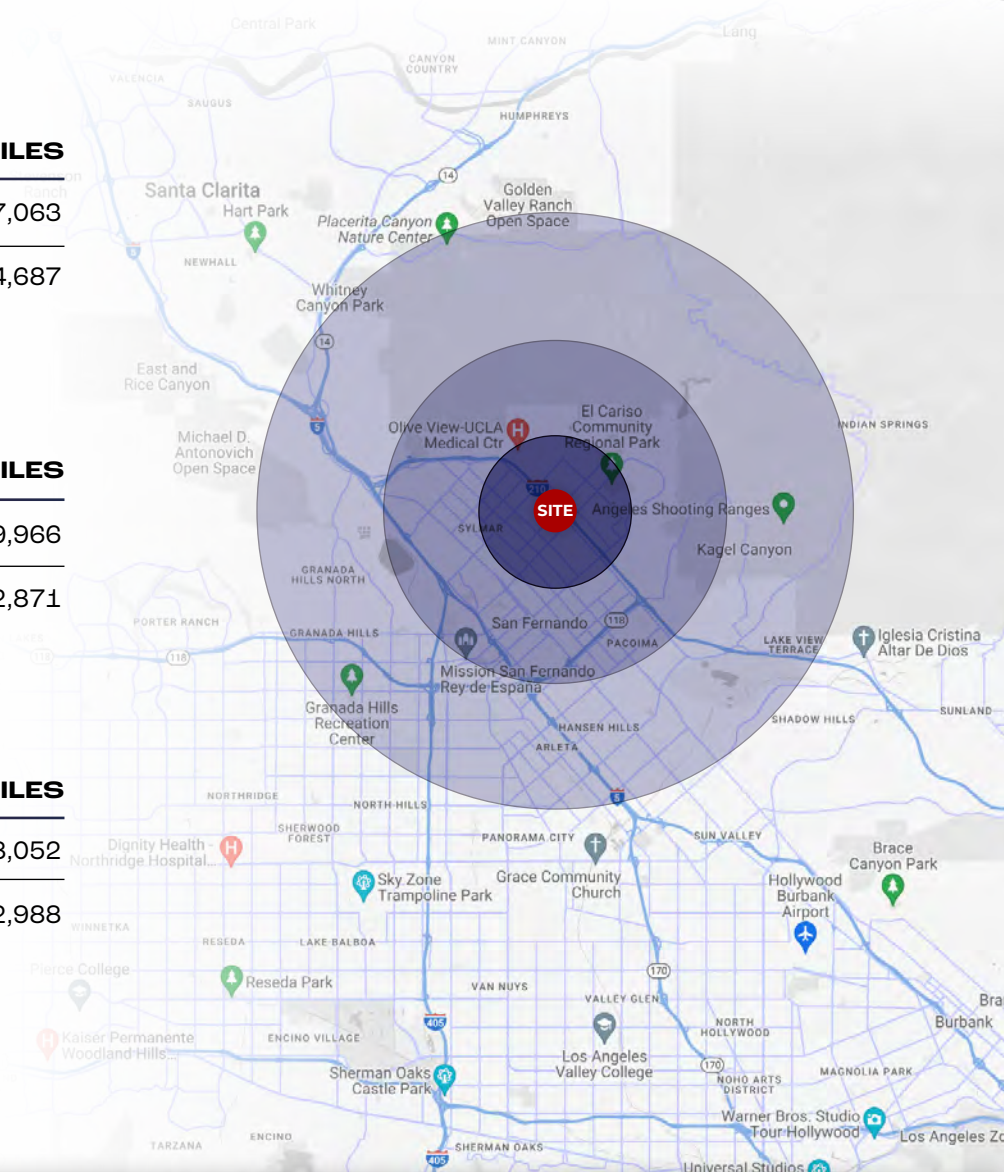
HOUSEHOLD INCOME

	1 MILE	3 MILES	5 MILES
Average Household Income	\$113,389	\$114,584	\$119,966
Median Household Income	\$91,351	\$88,531	\$92,871



DAYTIME POPULATION

	1 MILE	3 MILES	5 MILES
Total Businesses	591	3,932	8,052
Total Employees	3,744	42,263	72,988



YAIR HAIMOFF, SIOR

Executive Managing Director
818.203.5429

yhaimoff@spectrumcre.com
CA DRE Lic. #01414758

No warranty, express or implied, is made as to the accuracy of the information contained herein. This information is submitted subject to errors, omission, change of price, rental or other conditions, withdrawal without notice, and is subject to any special listing conditions imposed by our principals. Cooperating brokers, buyers, tenants and other parties who receive this document should not rely on it, but should use it as a starting point of analysis, and should independently confirm the accuracy of the information contained herein through a due diligence review of the books, recods, files and documents that constitute reliable sources of the information described herein. Spectrum Commercial Real Estate, Inc. CA DRE #02042805

SPECTRUM

COMMERCIAL REAL ESTATE, INC.

spectrumcre.com | 818.252.9900

FOR LEASE

13803

FOOTHILL BLVD

SYLMAR, CA



YAIR HAIMOFF, SIOR

Executive Managing Director

818.203.5429

yhaimoff@spectrumcre.com

CA DRE Lic. #01414758

SPECTRUM
COMMERCIAL REAL ESTATE, INC.

spectrumcre.com | 818.252.9900

No warranty, express or implied, is made as to the accuracy of the information contained herein. This information is submitted subject to errors, omission, change of price, rental or other conditions, withdrawal without notice, and is subject to any special listing conditions imposed by our principals. Cooperating brokers, buyers, tenants and other parties who receive this document should not rely on it, but should use it as a starting point of analysis, and should independently confirm the accuracy of the information contained herein through a due diligence review of the books, records, files and documents that constitute reliable sources of the information described herein. Spectrum Commercial Real Estate, Inc. CA DRE #02042805