



Industrial Development Land Located Rapidly-Developing Area



Sale Price	\$1,170,000 - \$5,950,000
------------	--------------------------------------

OFFERING SUMMARY

Available SF:	±12.227 AC
Lot B:	±51.227 AC
Lot C:	±19.227 AC
Total Lot Size:	63.45 Acres
Price / SF:	\$93,775
Zoning:	IL - Industrial Light
Market:	Fresno
Submarket:	Outlying Madera County
Cross Streets:	CA-99 & Ave 20
APN:	029-100-006

PROPERTY HIGHLIGHTS

- ±12, 51, or 63.5 Acres of Industrial Development Land
- Lot C is a Proposed Truck Center in Escrow
- Water, Sewer, Power @ Street w/ Gas Transmission Line & AT&T Fiber
- Rapidly-Developing Region w/ Overnight-Ship Access to 99% of California
- Flexible Zoning, Ready-to-Develop, Active Employment Base
- High Identity Location | Shovel Ready | Expedient County Building Jurisdiction
- Surrounded By Madera's Highest Trafficked Roads & Major Arterials
- Direct Access & Exposure to Upgraded HWY 99 Off/On Ramps
- Ideal for Manufacturing, Warehouse/Distribution, Flex Space, or Terminal
- Optimal Visibility w/ Over ±145,573 Cars Per Day
- Unmatched Level of Consumer Traffic & High Volume Exposure

Jared Ennis

CalDRE #01945284

Executive Vice President

jared@centralcacommercial.com

559.705.1000

Kevin Land

CalDRE #01516541

Executive Managing Director

kevin@centralcacommercial.com

559.705.1000

Central CA Commercial

Investments | Industrial | Office

Multifamily | Retail | Land | Specialty

CentralCaCommercial.com

We obtained the information above from sources we believe to be reliable. However, we have not verified its accuracy and make no guarantee, warranty or representation about it. It is submitted subject to the possibility of errors, omissions, change of price, rental or other conditions, prior sale, lease or financing, or withdrawal without notice. We include projections, opinions, assumptions or estimates for example only, and they may not represent current or future performance of the property. You and your tax and legal advisors should conduct your own investigation of the property and transaction.

Industrial Development Land Located Rapidly-Developing Area

PROPERTY DESCRIPTION

2 parcels totaling ± 63.453 AC (± 12.227 AC & ± 51.227 AC) of ideal development land available at the Berenda Industrial Park in Madera, CA. Parcels are available together or separate and the seller is willing to subdivide the parcels. Site includes nearby utility improvements (water, power, gas), nearby access from CA-99, and easy access from Fresno, Madera, & Merced counties. Adjacent to a planned Travel Center, site is a prime development opportunity offering existing 12" diam. well on southeast corner (additional well will need be drilled to service site at an estimated depth of 300-400'), main gas transmission line runs along north of property parallel to Union Pacific railway, & Pacific Gas & Electric is installed as well as AT&T Fiber Optics. Site is well-positioned to deliver a convenient manufacturing, shipping and logistics experience along California Golden State Highway 99 (+124,421 AADT; +21,152 Truck AADT) and easy access to the I-5.

LOCATION DESCRIPTION

Strategically located at new interchange of CA State Highway 99 & Avenue 20 1/2 in northwest Madera, CA. The Subject Property is well-positioned to deliver a convenient manufacturing, shipping and logistics experience along California Golden State Highway 99 (+124,421 AADT; +21,152 Truck AADT) and easy access to the I-5. Easy north/south Hwy 99 access & will benefit from this large, expanding commercial market. These arterial routes connect San Francisco and Los Angeles through the California Central Valley, offering overnight shipping access to most of the state and surrounding hubs of commerce. The site also offers easy access to notable Ports including Stockton (105 miles), Oakland (153 miles), Sacramento (175 miles) and Long Beach (265 miles). Madera is located a 1/2 hour drive from Fresno, with easy access to several major points of commerce. This centralized location offers overnight shipping capabilities to 99% of California.



Jared Ennis

CalDRE #01945284

Executive Vice President

jared@centralcacommercial.com

559.705.1000

Kevin Land

CalDRE #01516541

Executive Managing Director

kevin@centralcacommercial.com

559.705.1000

Central CA Commercial

Investments | Industrial | Office

Multifamily | Retail | Land | Specialty

CentralCaCommercial.com

We obtained the information above from sources we believe to be reliable. However, we have not verified its accuracy and make no guarantee, warranty or representation about it. It is submitted subject to the possibility of errors, omissions, change of price, rental or other conditions, prior sale, lease or financing, or withdrawal without notice. We include projections, opinions, assumptions or estimates for example only, and they may not represent current or future performance of the property. You and your tax and legal advisors should conduct your own investigation of the property and transaction.



Industrial Development Land Located Rapidly-Developing Area

OF LOTS 2 | TOTAL LOT SIZE 12.227 - 63.45 ACRES | TOTAL LOT PRICE \$1,170,000 - \$5,950,000 |

STATUS	LOT #	SUB-TYPE	SIZE	PRICE
Available	A	Industrial	12.227 Acres	\$1,170,000
Available	B	Industrial	51.227 Acres	\$4,780,000
Available	A & B	Industrial	63.45 Acres	\$5,950,000

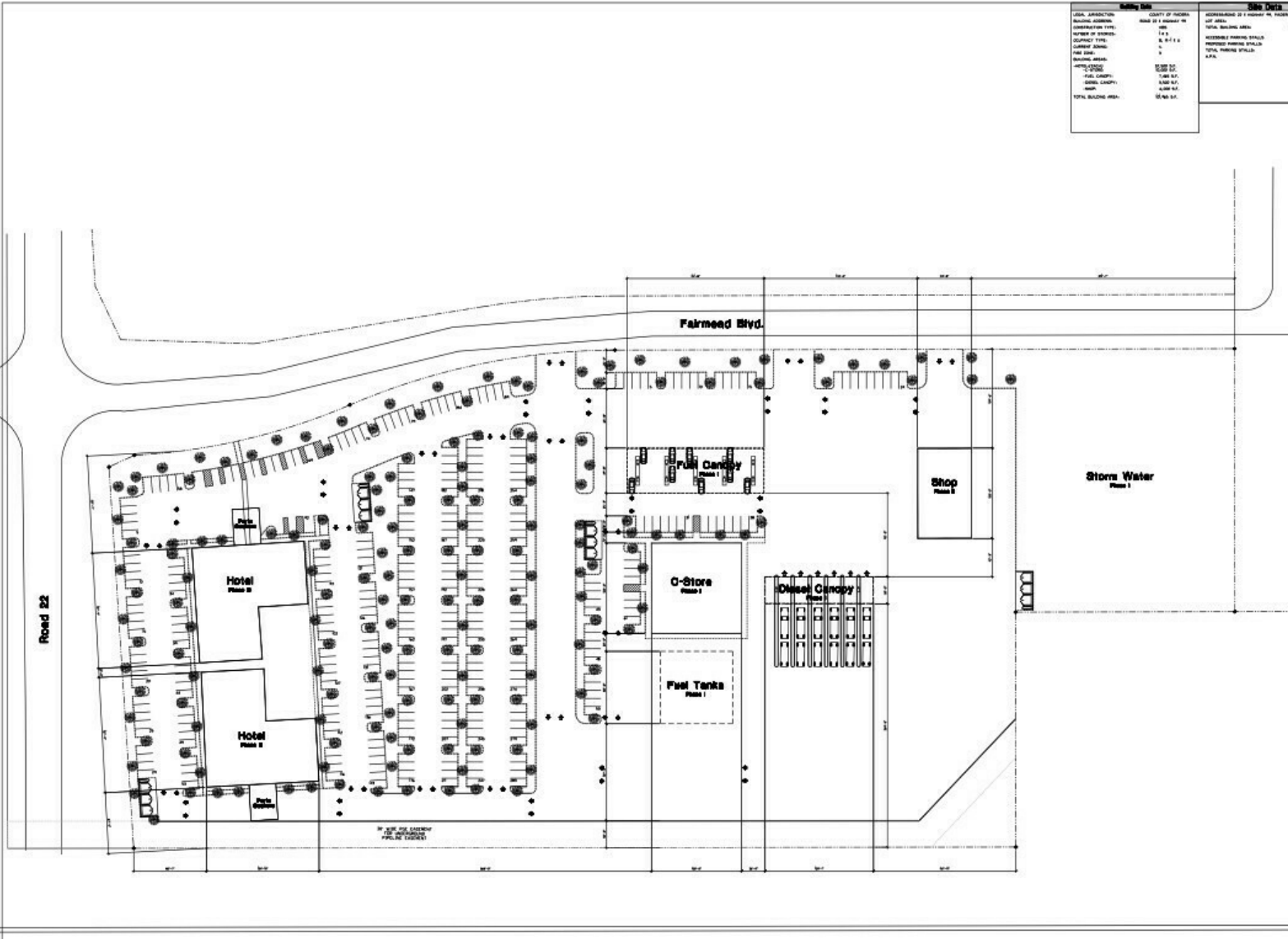
Jared Ennis
CalDRE #01945284
Executive Vice President
jared@centralcacommercial.com
559.705.1000

Kevin Land
CalDRE #01516541
Executive Managing Director
kevin@centralcacommercial.com
559.705.1000

Central CA Commercial
Investments | Industrial | Office
Multifamily | Retail | Land | Specialty
CentralCaCommercial.com

We obtained the information above from sources we believe to be reliable. However, we have not verified its accuracy and make no guarantee, warranty or representation about it. It is submitted subject to the possibility of errors, omissions, change of price, rental or other conditions, prior sale, lease or financing, or withdrawal without notice. We include projections, opinions, assumptions or estimates for example only, and they may not represent current or future performance of the property. You and your tax and legal advisors should conduct your own investigation of the property and transaction.

Industrial Development Land Located Rapidly-Developing Area



Jared Ennis

CalDRE #01945284

Executive Vice President

jared@centralcacommercial.com

559.705.1000

Kevin Land

CalDRE #01516541

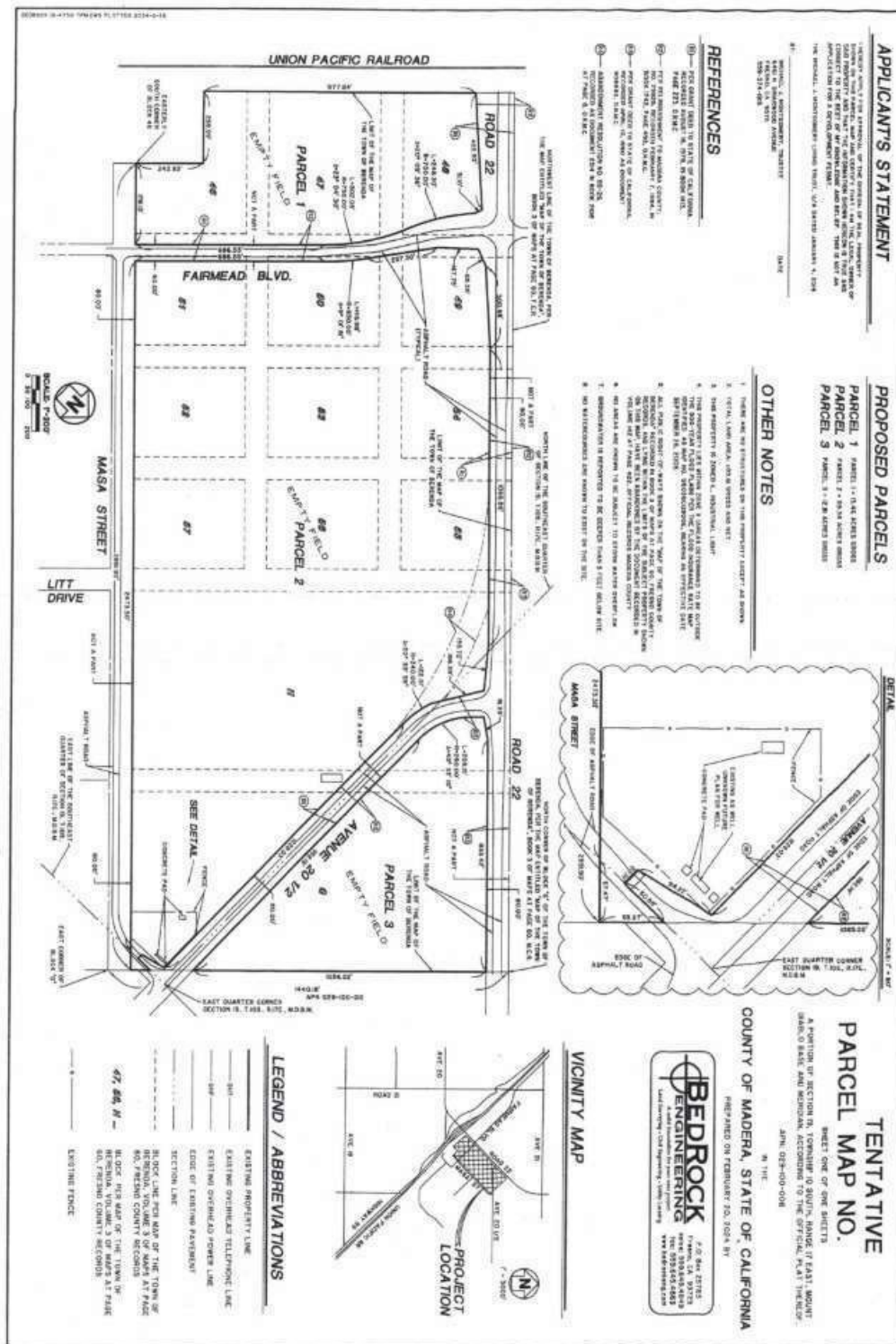
Executive Managing Director

kevin@centralcacommercial.com

559.705.1000

Central CA Commercial
Investments | Industrial | Office
Multifamily | Retail | Land | Specialty
CentralCaCommercial.com

We obtained the information above from sources we believe to be reliable. However, we have not verified its accuracy and make no guarantee, warranty or representation about it. It is submitted subject to the possibility of errors, omissions, change of price, rental or other conditions, prior sale, lease or financing, or withdrawal without notice. We include projections, opinions, assumptions or estimates for example only, and they may not represent current or future performance of the property. You and your tax and legal advisors should conduct your own investigation of the property and transaction.



Central CA Commercial
Investments | Industrial | Office
Multifamily | Retail | Land | Specialty
CentralCaCommercial.com

We obtained the information above from sources we believe to be reliable. However, we have not verified its accuracy and make no guarantee, warranty or representation about it. It is submitted subject to the possibility of errors, omissions, change of price, rental or other conditions, prior sale, lease or financing, or withdrawal without notice. We include projections, opinions, assumptions or estimates for example only, and they may not represent current or future performance of the property. You and your tax and legal advisors should conduct your own investigation of the property and transaction.

Industrial Development Land Located Rapidly-Developing Area



Jared Ennis

CalDRE #01945284

Executive Vice President

jared@centralcacommercial.com

559.705.1000

Kevin Land

CalDRE #01516541

Executive Managing Director

kevin@centralcacommercial.com

559.705.1000

Central CA Commercial

Investments | Industrial | Office

Multifamily | Retail | Land | Specialty

CentralCaCommercial.com

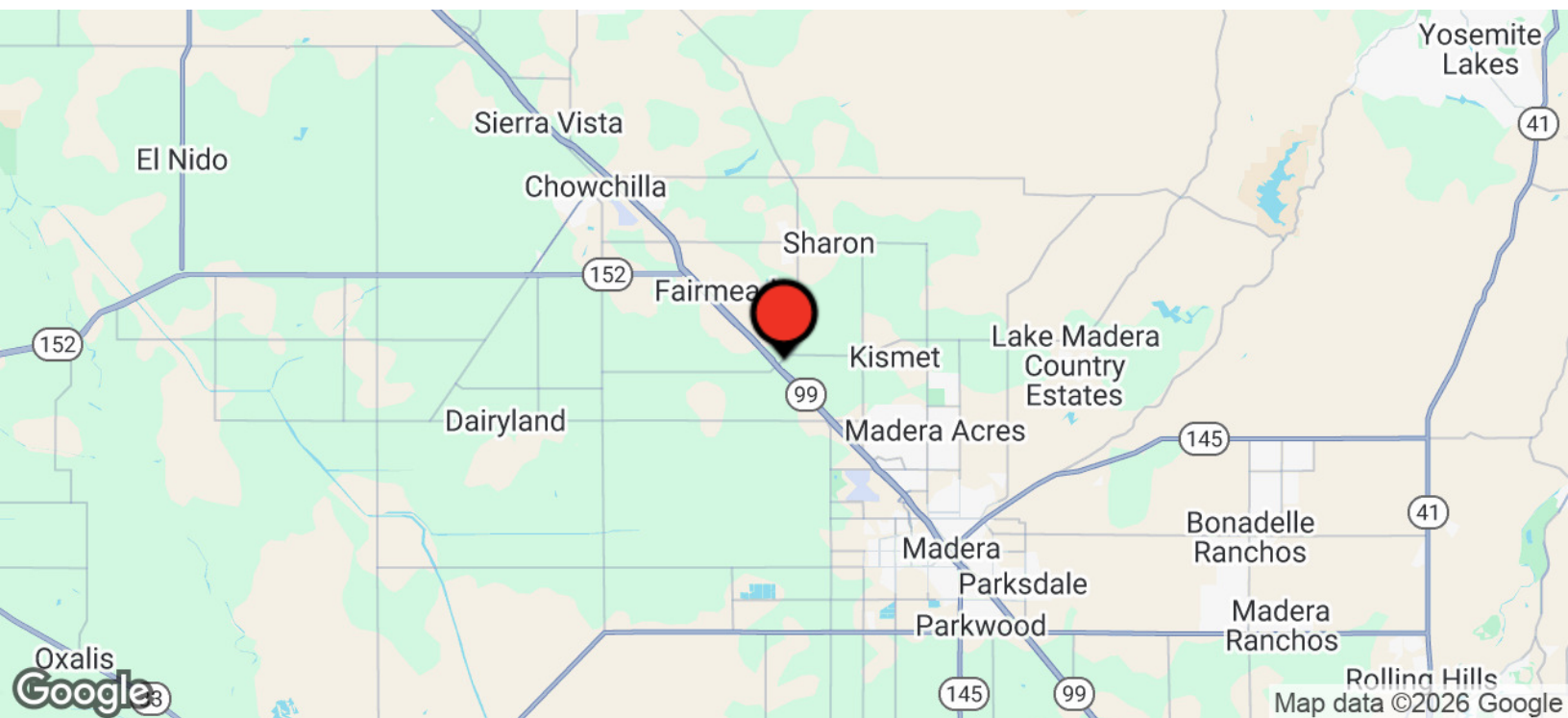
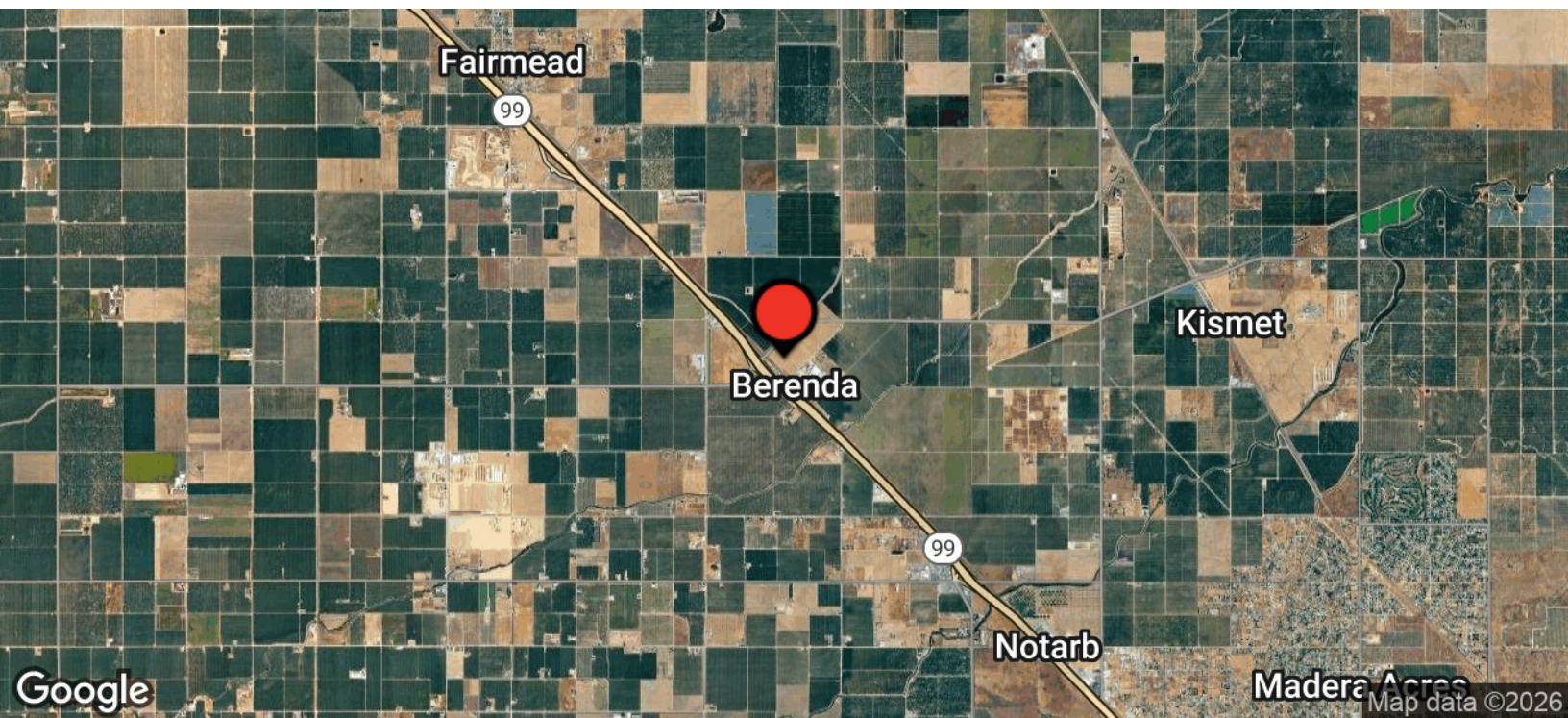
We obtained the information above from sources we believe to be reliable. However, we have not verified its accuracy and make no guarantee, warranty or representation about it. It is submitted subject to the possibility of errors, omissions, change of price, rental or other conditions, prior sale, lease or financing, or withdrawal without notice. We include projections, opinions, assumptions or estimates for example only, and they may not represent current or future performance of the property. You and your tax and legal advisors should conduct your own investigation of the property and transaction.

Land For Sale | 20200 Fairmead Blvd Madera, CA 93638



**CENTRAL CA
COMMERCIAL**

Industrial Development Land Located Rapidly-Developing Area



Jared Ennis

CalDRE #01945284

Executive Vice President

jared@centralcacommercial.com

559.705.1000

Kevin Land

CalDRE #01516541

Executive Managing Director

kevin@centralcacommercial.com

559.705.1000

Central CA Commercial

Investments | Industrial | Office

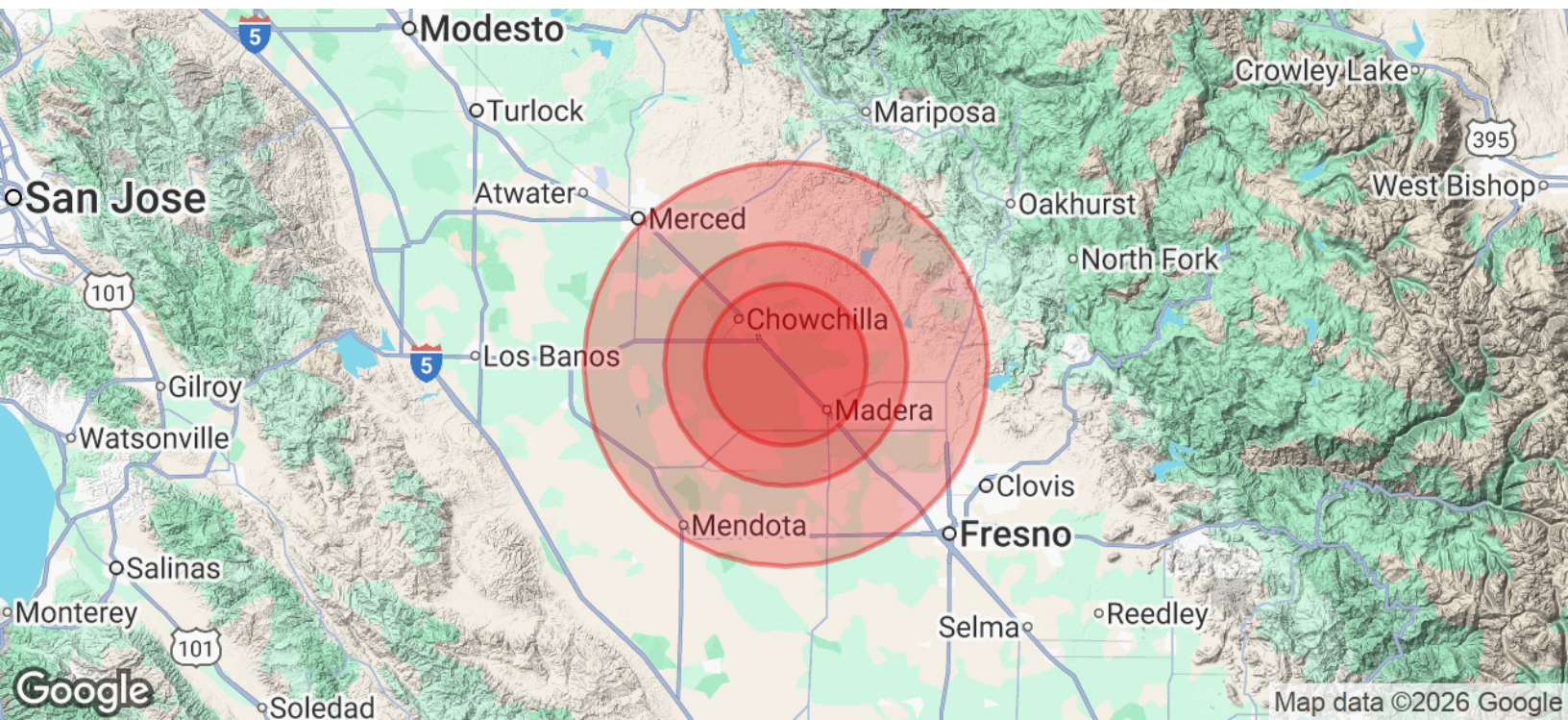
Multifamily | Retail | Land | Specialty

CentralCaCommercial.com

We obtained the information above from sources we believe to be reliable. However, we have not verified its accuracy and make no guarantee, warranty or representation about it. It is submitted subject to the possibility of errors, omissions, change of price, rental or other conditions, prior sale, lease or financing, or withdrawal without notice. We include projections, opinions, assumptions or estimates for example only, and they may not represent current or future performance of the property. You and your tax and legal advisors should conduct your own investigation of the property and transaction.



Industrial Development Land Located Rapidly-Developing Area



POPULATION	10 MILES	15 MILES	25 MILES
Total Population	105,232	119,425	393,249
Average Age	31.4	31.8	34.1
Average Age (Male)	31.2	31.7	33.5
Average Age (Female)	32.5	32.7	35.1

HOUSEHOLDS & INCOME	10 MILES	15 MILES	25 MILES
Total Households	28,804	33,105	125,758
# of Persons per HH	3.7	3.6	3.1
Average HH Income	\$64,781	\$66,330	\$82,090
Average House Value	\$235,203	\$250,409	\$282,333

ETHNICITY (%)	10 MILES	15 MILES	25 MILES
Hispanic	71.7%	70.6%	55.2%

Jared Ennis

CalDRE #01945284

Executive Vice President

jared@centralcacommercial.com

559.705.1000

Kevin Land

CalDRE #01516541

Executive Managing Director

kevin@centralcacommercial.com

559.705.1000

Central CA Commercial

Investments | Industrial | Office

Multifamily | Retail | Land | Specialty

CentralCaCommercial.com

We obtained the information above from sources we believe to be reliable. However, we have not verified its accuracy and make no guarantee, warranty or representation about it. It is submitted subject to the possibility of errors, omissions, change of price, rental or other conditions, prior sale, lease or financing, or withdrawal without notice. We include projections, opinions, assumptions or estimates for example only, and they may not represent current or future performance of the property. You and your tax and legal advisors should conduct your own investigation of the property and transaction.