

**FOR  
LEASE**

# OPEN WAREHOUSE / FLEX SPACE



**1128 N Federal Hwy, Unit 2  
Hollywood, FL 33020**

**1,500 +/- SQFT +  
2,000+/- SQFT fenced yard**



- Utilities are included!
- Open and fully customizable
- 3 grade-level doors
- Brand-new restroom
- Polished flooring
- Private fenced lot
- Zoning is Federal Highway Medium-High Intensity Mixed Use and may allow for retail-type businesses, dry cleaners, pre-manufactured parts for sale businesses, and more.
- Very close to Downtown Hollywood

**Terms Negotiable**

**Call or text 954-224-8773!**



**JOE PELAYO, CCIM, SIOR**  
BROKER

[trec@joepelayo.com](mailto:trec@joepelayo.com)

**954.224.8773**

**TREC**  
Total Real Estate Consultants Inc.  
[www.trecfl.com](http://www.trecfl.com)

**GEORGE PELAYO**  
BROKER ASSOCIATE

[george@trecfl.com](mailto:george@trecfl.com)

**954.482.1330**



NOTICE: This information has been obtained from sources believed to be reliable but has not been verified. No warranty or representation, express or implied, is made as to the condition/legal adjustments of the property (or properties) referenced or as to the accuracy or completeness of the information contained, and same is submitted subject to errors, omissions, change of price, retail or other conditions, including but not limited to withdrawal without notice, and to any special listing conditions imposed by the property owner.

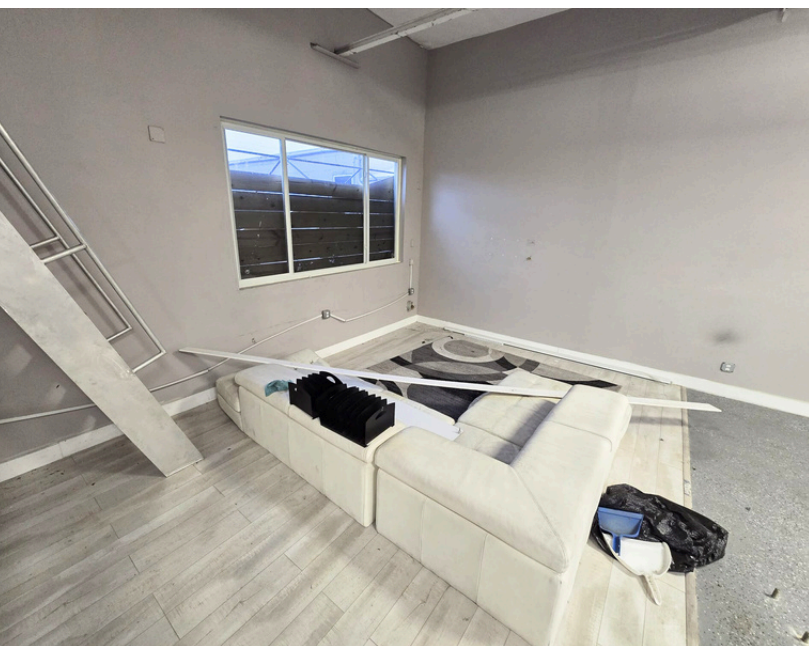


**FOR  
LEASE**

# OPEN WAREHOUSE / FLEX SPACE

1128 N Federal Hwy, Unit 2  
Hollywood, FL 33020

**1,500 +/- SQFT +  
2,000 +/- SQFT fenced yard**



**Terms Negotiable**

**Call or text 954-224-8773!**



**JOE PELAYO, CCIM, SIOR**  
BROKER

trec@joepelayo.com

**954.224.8773**

**TREC**  
Total Real Estate Consultants Inc.  
[www.trecfl.com](http://www.trecfl.com)

**GEORGE PELAYO**  
BROKER ASSOCIATE

george@trecfl.com

**954.482.1330**



NOTICE: This information has been obtained from sources believed to be reliable but has not been verified. No warranty or representation, express or implied, is made as to the condition/legal adjustments of the property (or properties) referenced or as to the accuracy or completeness of the information contained, and same is submitted subject to errors, omissions, change of price, retail or other conditions, including but not limited to withdrawal without notice, and to any special listing conditions imposed by the property owner.