

California Partners, Inc.

## AVAILABLE FOR LEASE

+/- 5,175 Rentable Square Feet

1995 N First Street, San Jose CA

Rent \$2.95 /SQFT|FS



### Highlights:

- 5,175 RSF
- ~ Professional Office
- Premier Building & Location
- Highway 101 Signage
- 4/1k Secured Parking
- Executive Level Finishes
- Designer Reception Area
- Perfect for a High-Profile User
- Near Mineta Intl Airport
- Near Retailers, Amenities & Restaurants
- Easy Access to All Hwy's
- ~ 101, 280, 237, 680 & 880



All information furnished regarding property for sale, rental or financing is from sources deemed reliable, but no warranty or representation is made to the accuracy thereof and same is submitted to errors, omissions, change of price, rental or other conditions prior to sale, lease or financing or withdrawal without notice. No liability of any kind is to be imposed on the broker herein.



California Partners, Inc.

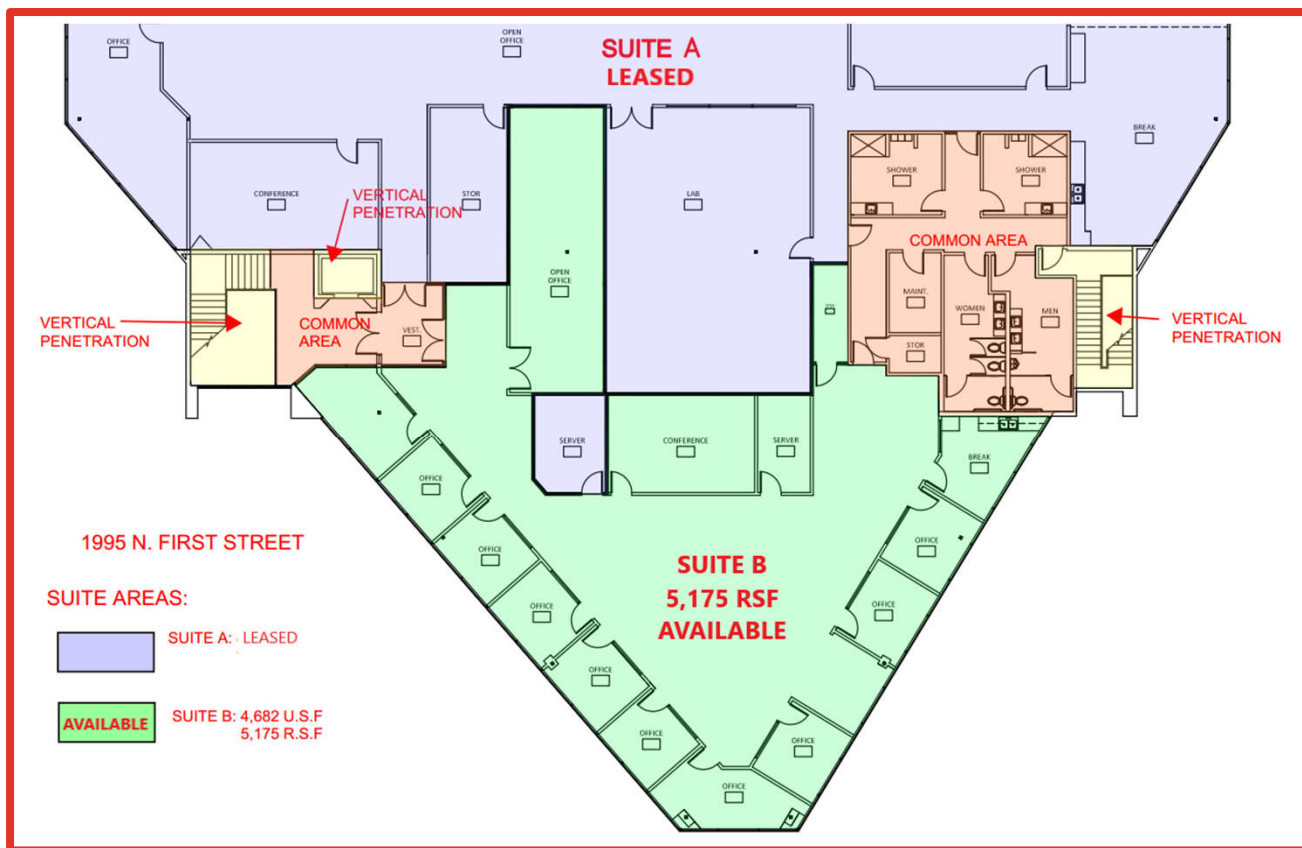
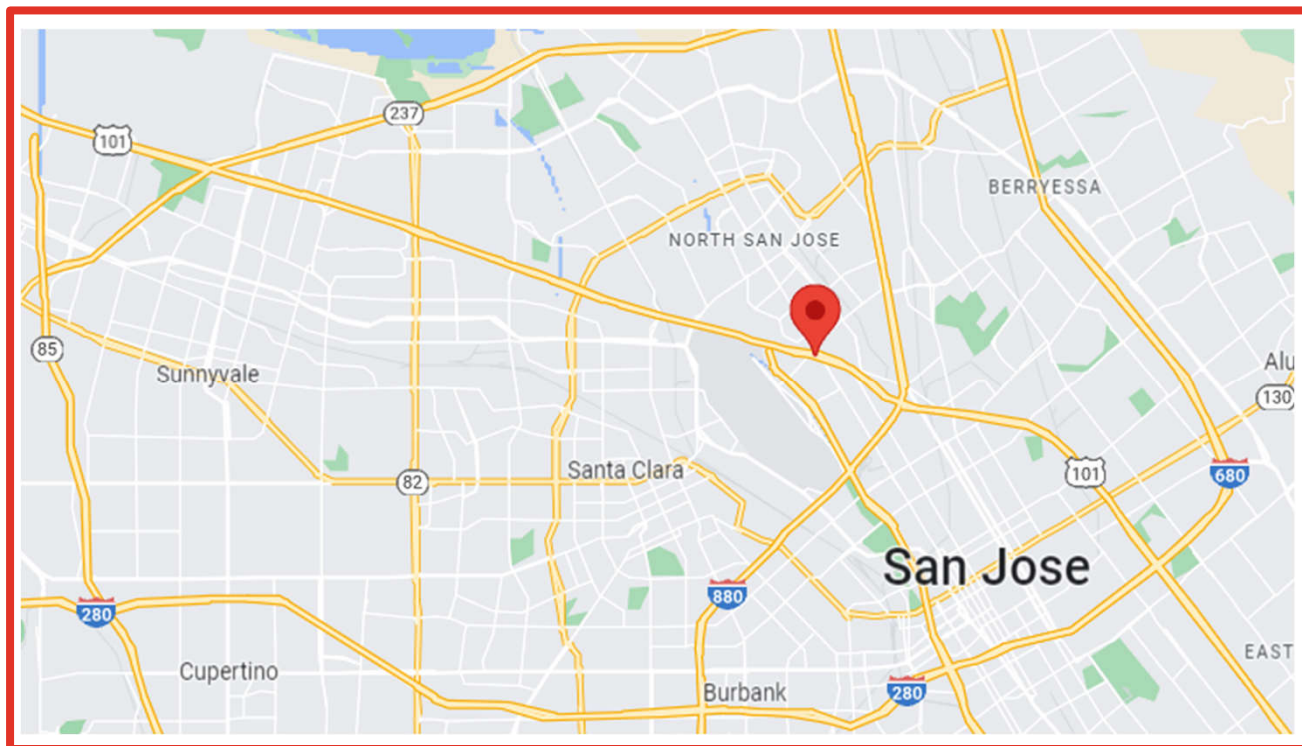
## AVAILABLE FOR LEASE

+/- 5,175 square feet

1995 N First Street, San Jose CA

Rent \$2.95 /SQFT | FS





## Walter Gil

California Partners, Inc.  
 408-410-5695 direct  
[www.cpi-re.com](http://www.cpi-re.com)  
[wgil@cpi-re.com](mailto:wgil@cpi-re.com)  
 DRE Lic. # 00755670

## Michael Passarelli

California Partners, Inc.  
 650-670-6776 direct  
[www.cpi-re.com](http://www.cpi-re.com)  
[michael@cpi-re.com](mailto:michael@cpi-re.com)  
 DRE Lic. #01073382