

**PRIME QUEENS COMMERCIAL
CONDOMINIUM FOR SALE**

92-29 Queens Blvd,

Units 2G and 2E

Rego Park, NY, 11374

(corner Long Island Expressway)



THE WEINBERGER TEAM
SALES-LEASING-APPRAISALS



Victor Weinberger



NYS Licensed RE. Associate

E-mail: VWremax@gmail.com

Website: VictorWeinberger.com

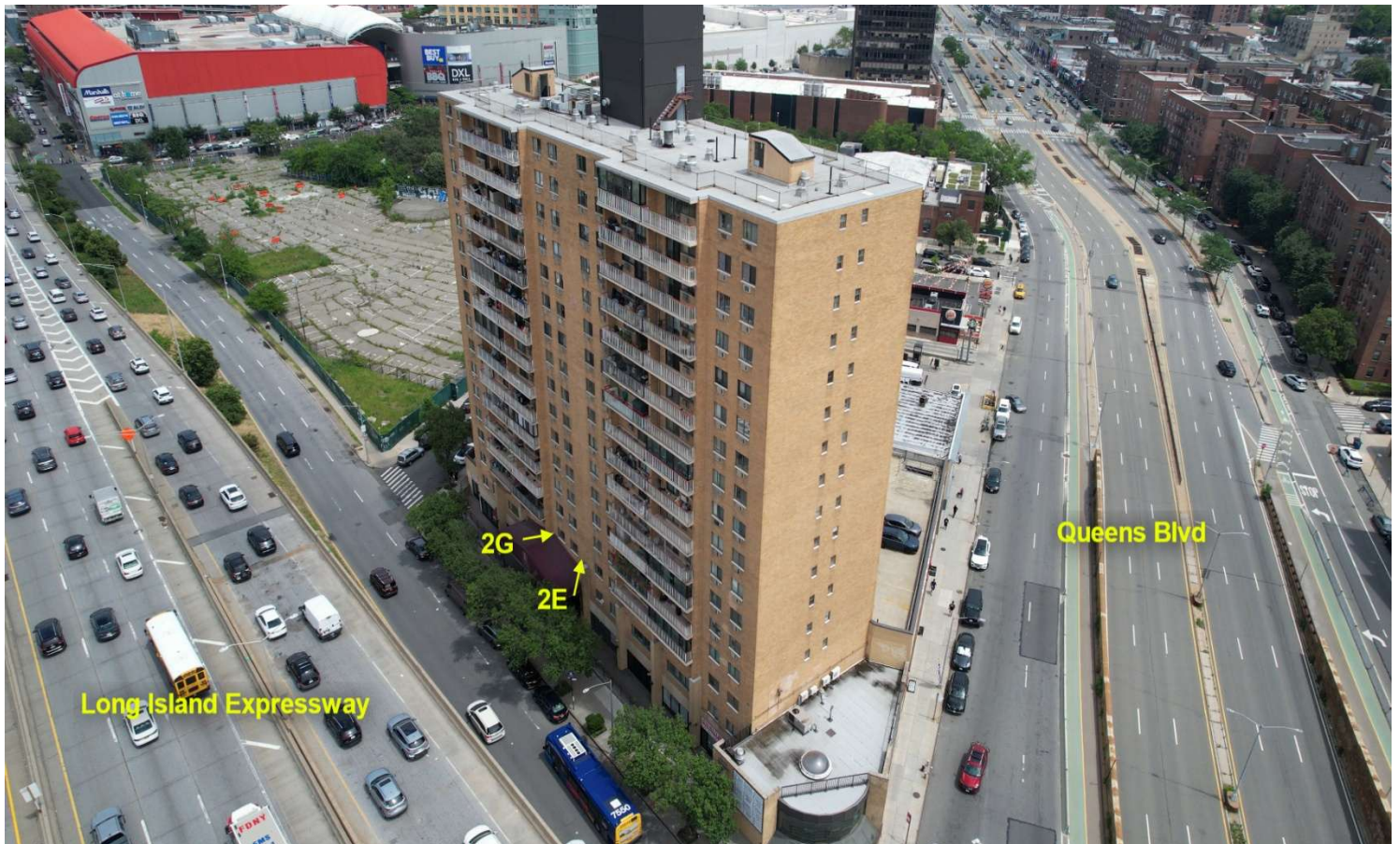
917-806-7040



EXPERIENCE * KNOWLEDGE * DEDICATION
CALL ME FOR ALL YOUR REAL ESTATE NEEDS
Over 1,200 Transactions Closed * Top 1% in USA
Chairman's Club * Platinum Club * ReMax Hall Of Fame

Multi locations to serve you: 2) 27-04 Francis Lewis Blvd, Flushing, NY 11358
1) 36-11 33rd St, Astoria, NY 11106 3) 103-08 Metropolitan Ave, Forest Hills, NY 11375

Description: 2 Combined commercial condo units in the Queens Tower Condominium. Ideal for medical, or any professional office. Each unit is 446 SF, and has 3 rooms and bath. Total SF = 892 Sq.Ft. (separated by door). The Building is near all. The subway is only 500 feet away. Priced to sell at only \$549,000 (As a bonus 2 deeded indoor parking spots are included. (Value \$80,000. Simply Amazing)





First Floor

1A - Bill E. Marletta, M.D., PC.
1B - Abraham Tivadi, M.D.
1C - Syed H. Haque, CPA
1C - Dr. Ali Gazi
1D - Alejandro T. So, M.D.
1D - H. Rajagopal, M.D.
1E - Huntington Ambulette, Inc.
1F -
1G - My Quality Dental Care, PC.
1H, J - Sarinder S. Malhotra, M.D.
1H, J - Gulsan K. Malhotra, M.D.
1H - Rajinder S. Malhotra, M.D.
1I - Acctwell Inc.
1K - Lyle B. Borman, D.D.S., F.A.D.D.

Second Floor

2A - Victorio Bellot, M.D.
2B - Innovative Urology Practice
2B - Andrew T. Fishman, M.D.
2B - Michael T. Shy, M.D.
2C - Steven Gofin, M.S., ET
2C - Victory Medical Care, PC.
2D - Empire City Laboratories
Patient Service Center
2E - Psychiatric & Addiction
Recovery Services
2G - All About Homes Realty
2H - Jia Khan-Chen, M.D.
2I, J, K - Allen J. Fishman, M.D.
2I, J, K - Ghulam Dastgir, M.D.
2I, J, K - Matthew T. Noble, M.D.



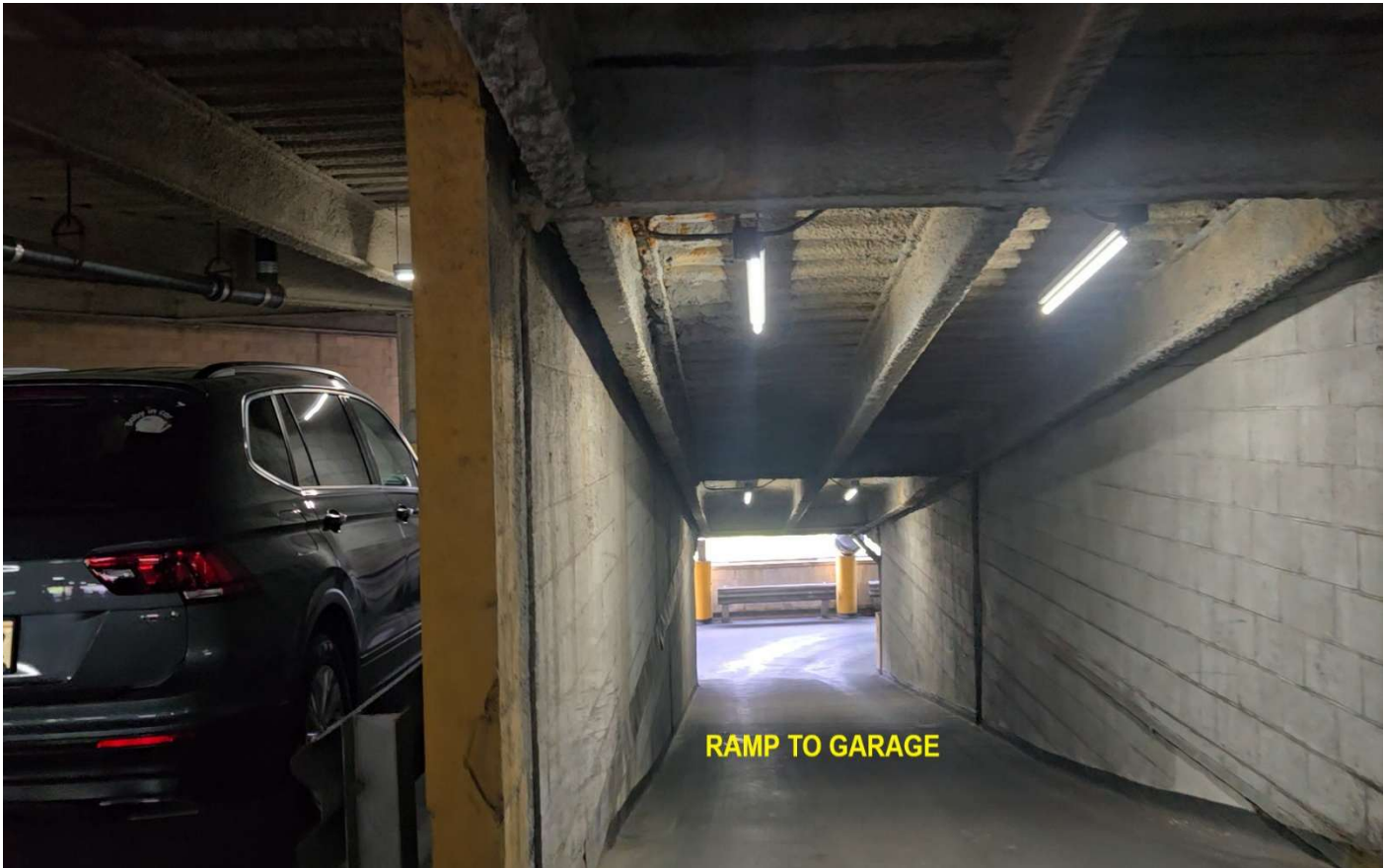
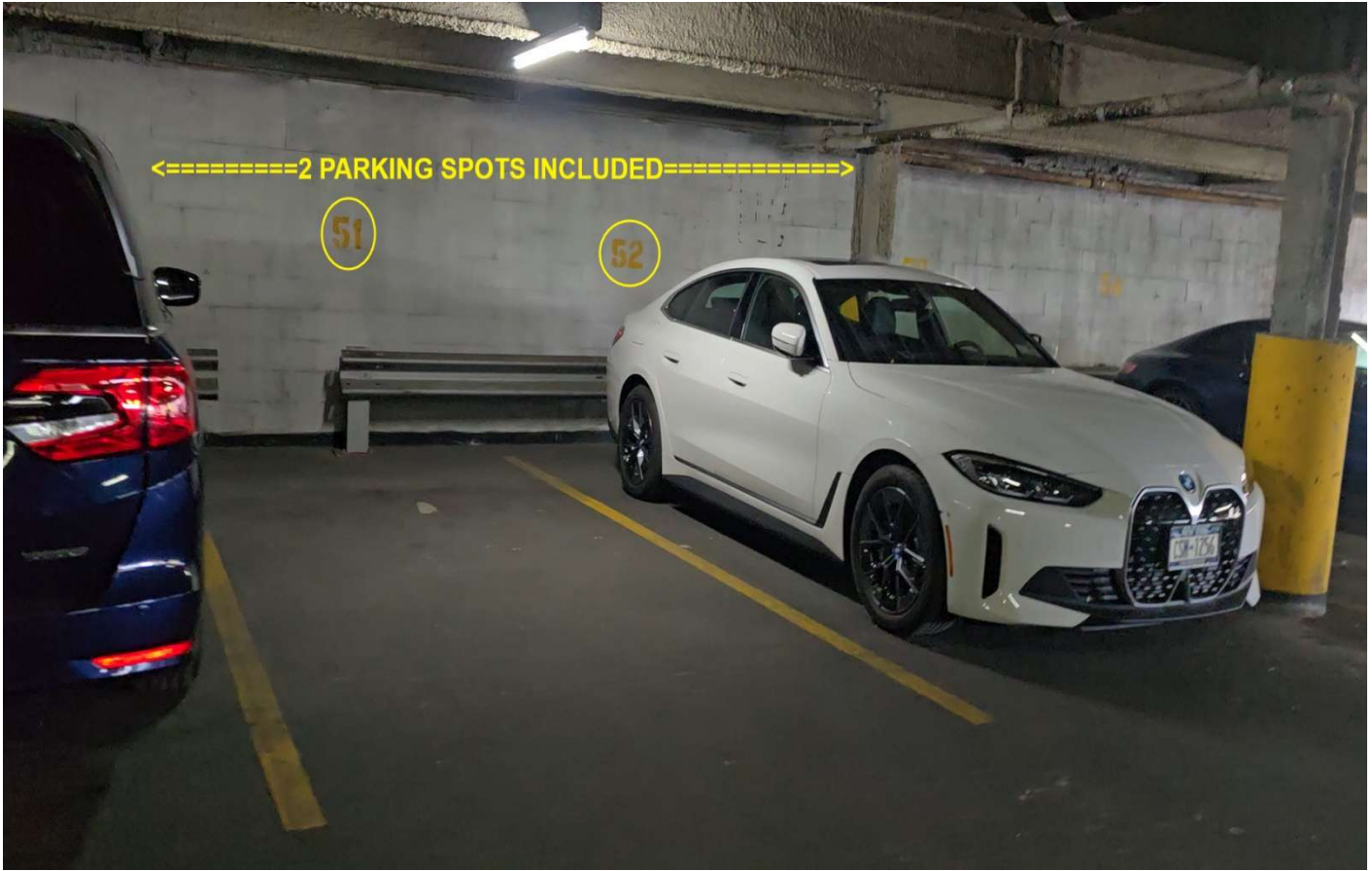




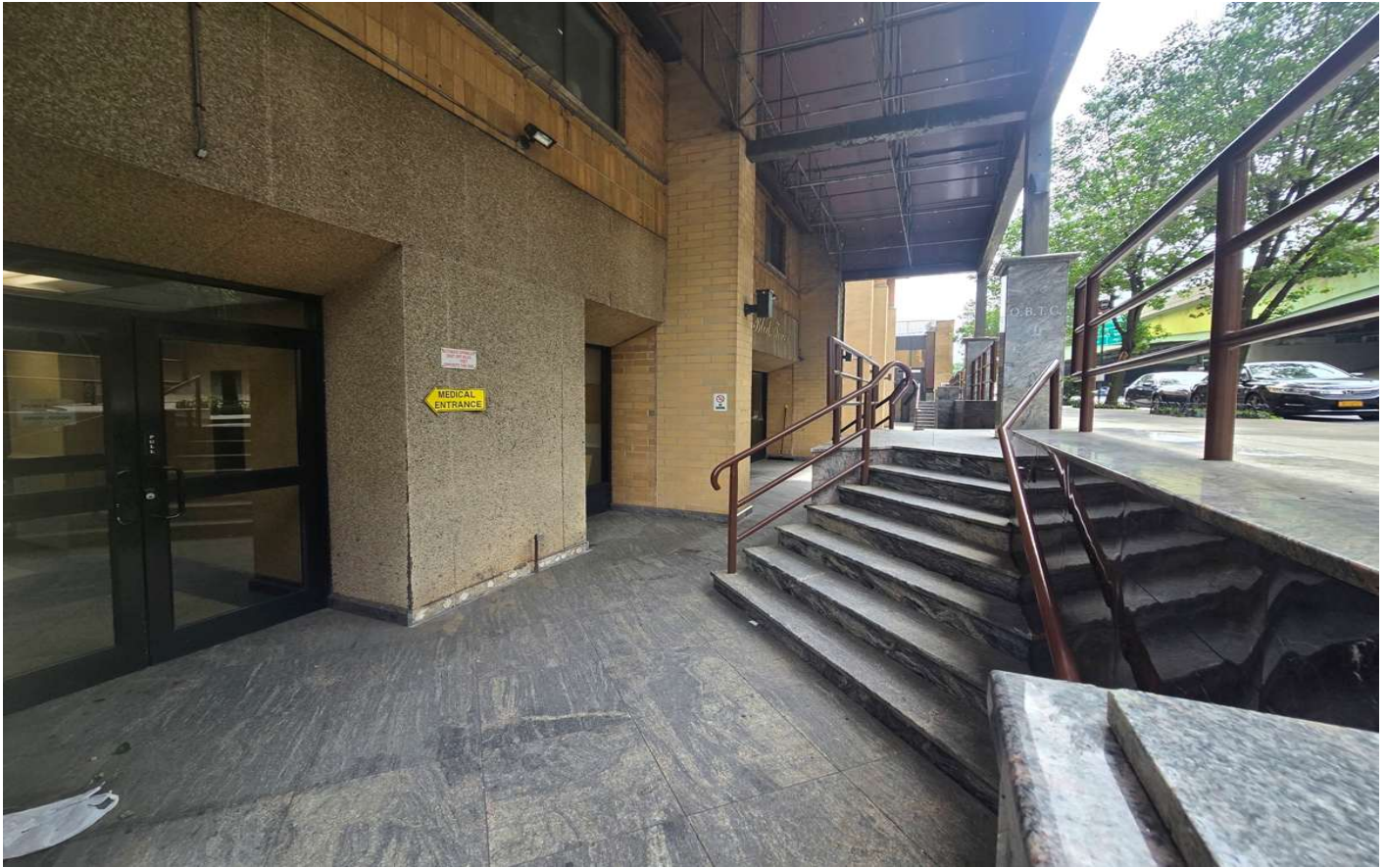
















**PRIME QUEENS COMMERCIAL
CONDOMINIUM FOR SALE**

**92-29 Queens Blvd,
Units 2G and 2E**

Rego Park, NY, 11374

(corner Long Island Expressway)

Description: 2 Combined commercial condo units in the Queens Tower Condominium. Ideal for medical, or any professional office. Each unit is 446 SF, and has 3 rooms and bath. Total SF = 892 Sq.Ft. (separated by door). The Building is near all. The subway is only 500 feet away. Priced to sell at only \$549,000 (As a bonus 2 deeded indoor parking spots are included. (Value \$80,000. Simply Amazing)

**THE WEINBERGER TEAM
SALES-LEASING-APPRAISALS**



Victor Weinberger



NYS Licensed RE. Associate
E-mail: VWremax@gmail.com
Website: VictorWeinberger.com

917-806-7040

EXPERIENCE * KNOWLEDGE * DEDICATION
CALL ME FOR ALL YOUR REAL ESTATE NEEDS
Over 1,200 Transactions Closed * Top 1% in USA
Chairman's Club * Platinum Club * ReMax Hall Of Fame

Multi locations to serve you
1) 36-11 33rd St, Astoria, NY, 11106
2) 27-04 Francis Lewis Blvd, Flushing, NY 11358
3) 103-08 Metropolitan Ave, Forest Hills, NY 11375



Transit

M	R	at Woodhaven Blvd	under 500 feet
M	R	at 63rd Drive-Rego Park	0.29 miles
M	R	at Grand Av-Newtown	0.56 miles
M	R	at 67th Av	0.81 miles
M	R	at Elmhurst Av	0.98 miles

