

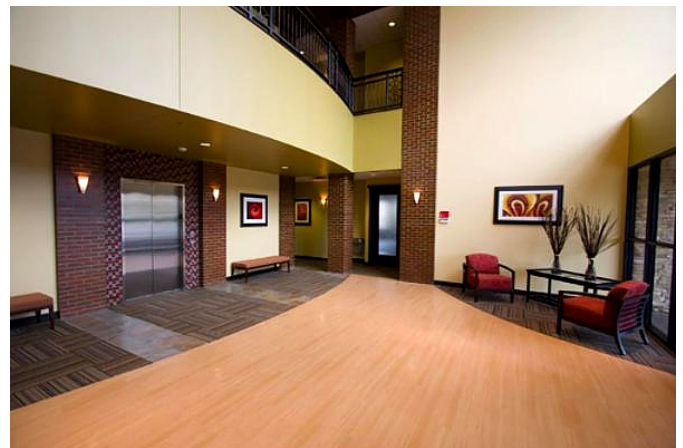
Medical Office Space for Lease

Memorial Medical Plaza



Property Highlights:

- Beautiful Class A medical office building.
- Located just north of Mercy Hospital.
- Quick access to Memorial Road/Kilpatrick Turnpike and Hefner Parkway.
- Close to many restaurants and retail stores.
- Full-service gross leases with Landlord paying for all utilities, taxes, and insurance.
- No additional CAM or operating expense fees charged.
- Rent rate: \$20.00- \$22.00.
- 350- 7,069 RSF available.



For more
information
contact:

Julie Kriegel
405.695.6500 | julie@okcoffice.com