

Single Story Commercial/Office Condo For Sale

1954 O'Toole Way, San Jose 95131



Meacham/Oppenheimer, Inc.
8 N San Pedro St. #300
San Jose, CA 95110
Tel. 408-378-5900
www.moinc.net

DAVID TAXIN
Partner
+1 408 966 5919
dtaxin@moinc.net
Lic. 00983163

BOBBY FACCHINO
Senior Associate
+1 408 318 0623
bobby@moinc.net
Lic. 02178873

Beautifully Renovated & Move-In Ready

Available Space: 768± SF

Listing price: \$369,000 (\$480 PSF)

Parking: 3 Spaces

Property Highlights:

- Fully remodeled & vacant – ready for immediate move-in
- End unit – no neighbors above or on one side for added privacy
- Professionally managed HOA with on-site staff for peace of mind
- Monthly HOA fees: \$240.02

Recent Upgrades Include:

- Brand-new flooring throughout
- Modern kitchen & bath with new cabinets, countertops, and fixtures
- Energy-efficient Bosch tankless water heater
- New HVAC system for year-round comfort
- Fresh, neutral interior paint

PHOTOS



PHOTOS



The Information contained herein has been obtained from sources we deem reliable. We cannot, however, assume responsibility for its accuracy.

PHOTOS



PARCEL MAP

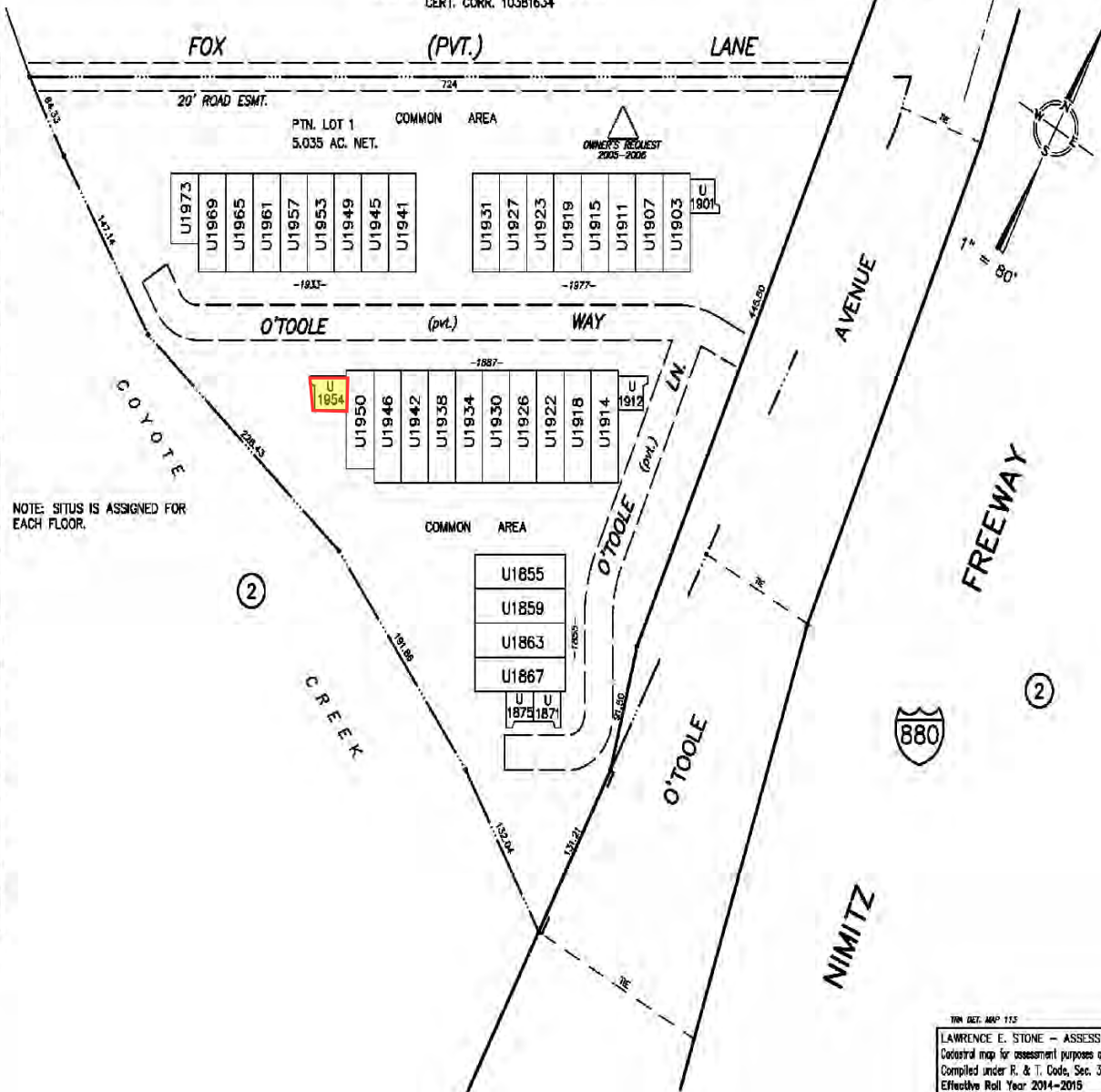


OFFICE OF COUNTY ASSESSOR — SANTA CLARA COUNTY, CALIFORNIA

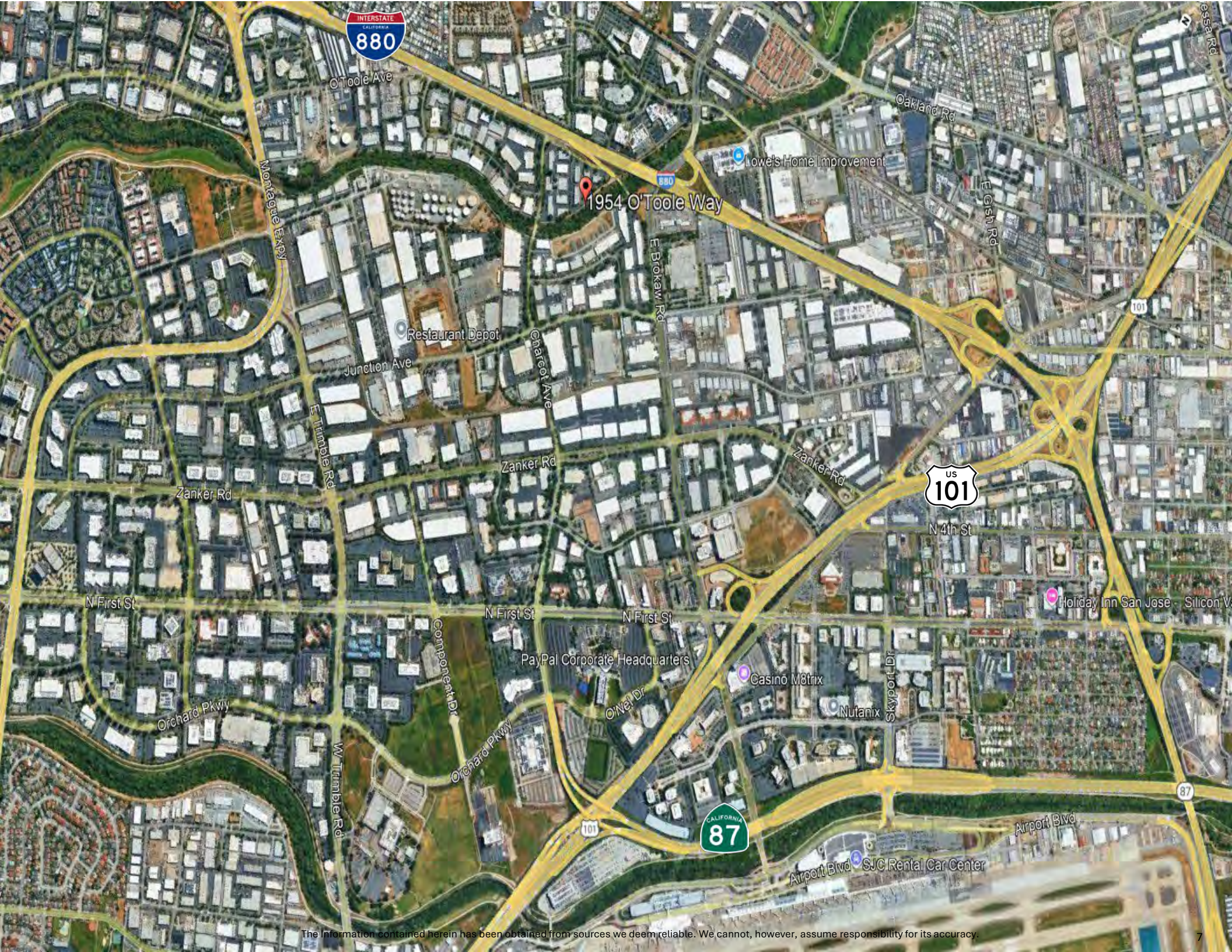
② TRACT NO. 7324
AMENDED CONDO
RIVERSIDE BUSINESS PARK
CERT. CORR. 10381634

BOOK
237
PAGE
32

CC&R 18434588				
O'TOOLE WAY				
UNIT	F.L.R.	APN	SITUS	
1973	1	38	1973/1975	
1969	1,2	39	1969/1971	
1965	1,2	40	1965/1967	
1961	1,2	41	1961/1963	
1957	1,2	42	1957/1959	
1953	1,2	43	1953/1955	
1949	1,2	44	1949/1951	
1945	1,2	45	1945/1947	
1941	1,2	46	1941/1943	
1931	1,2	47	1931/1933	
1927	1,2	48	1927/1929	
1923	1,2	49	1923/1925	
1919	1,2	50	1919/1921	
1915	1,2	51	1915/1917	
1911	1,2	52	1911/1913	
1907	1,2	53	1907/1909	
1903	1,2	54	1903/1905	
1901	1	55	1901	
1954	1	56	1954	
1950	1,2	57	1950/1952	
1946	1,2	58	1946/1948	
1942	1,2	59	1942/1944	
1938	1,2	60	1938/1940	
1934	1,2	61	1934/1936	
1930	1,2	62	1930/1932	
1926	1,2	63	1926/1928	
1922	1,2	64	1922/1924	
1918	1,2	65	1918/1920	
1914	1,2	66	1914/1916	
1912	1	67	1912	
O'TOOLE LANE				
1855	1,2	68	1855/1857	
1859	1,2	69	1859/1861	
1863	1,2	70	1863/1865	
1867	1,2	71	1867/1869	
1875	1	72	1973	
1871	1	73	1971	



TIN. DET. MAP 115
LAWRENCE E. STONE — ASSESSOR
Cadastral map for assessment purposes only.
Compiled under R. & T. Code, Sec. 327.
Effective Roll Year 2014-2015



DEMOGRAPHICS



2025 SUMMARY	1-MILE	3-MILE	5-MILE
Population	10,230	182,207	541,262
Households	3,462	64,500	184,843
Average Household Size	2.87	2.73	2.83
Owner Occupied Housing Units	1,696	25,753	77,728
Renter Occupied Housing Units	1,766	38,747	107,115
Median Age	37.5	35.5	36.4
Median Household Income	\$170,240	\$176,803	\$151,970
Average Household Income	\$207,672	\$214,127	\$194,904

1954 O'Toole Way, San Jose 95131



Meacham/Oppenheimer, Inc.
8 N San Pedro St. #300
San Jose, CA 95110
Tel. 408-378-5900
www.moinc.net

DAVID TAXIN
Partner
+1 408 966 5919
dtaxin@moinc.net
Lic. 00983163

BOBBY FACCHINO
Senior Associate
+1 408 318 0623
bobby@moinc.net
Lic. 02178873